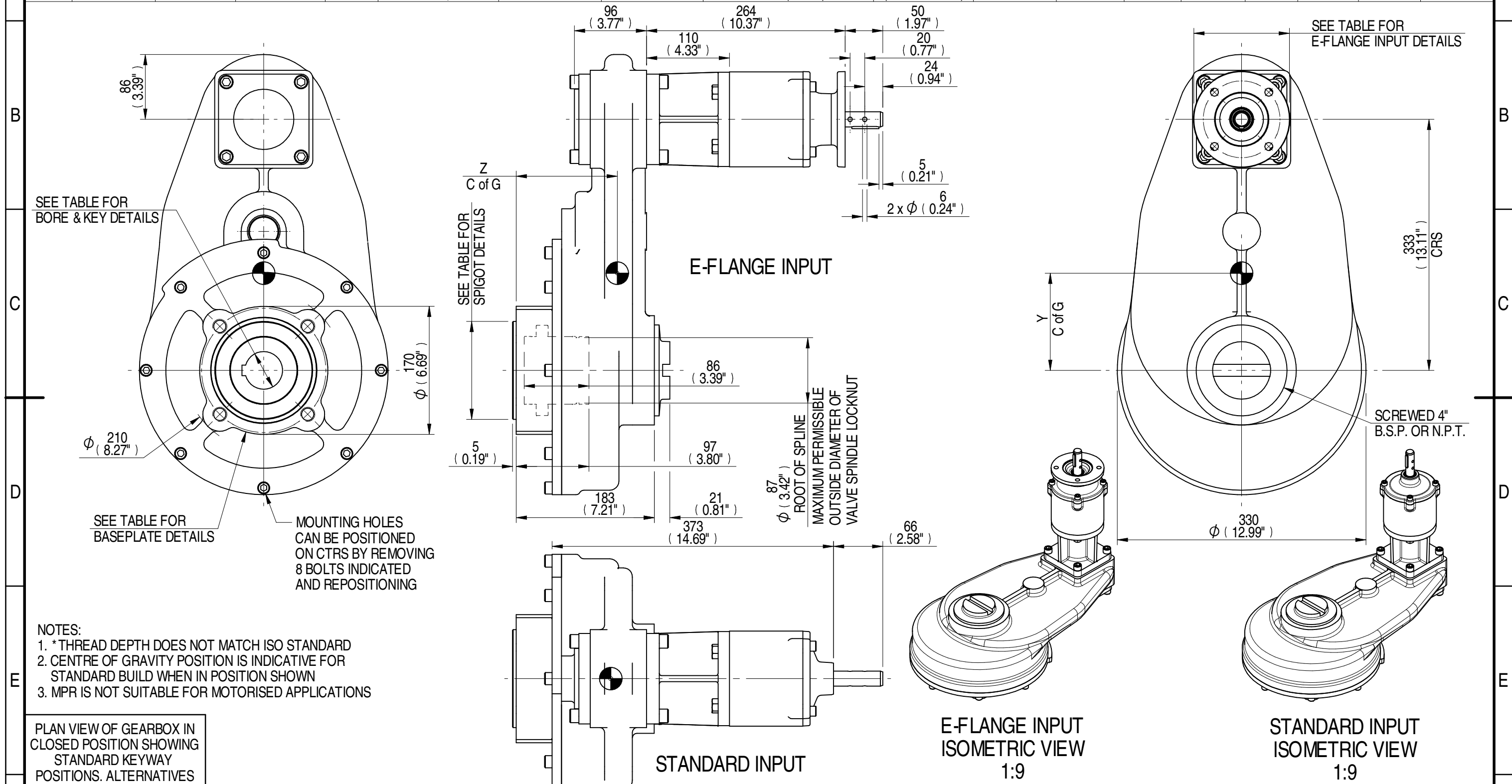


1	2			3		4			5		6			7			8
E-FLANGE INPUT DETAILS						MOUNTING HOLES - BOLT CIRCLE (OFF CENTRES)				STEM ACCEPTANCE IN ACCORDANCE TO STANDARD							
INPUT FLANGE	FLANGE O/DIA. + THICKNESS	SHAFT DIA.	RECESS DIA.	RECESS DEPTH	HOLE DETAILS (45° OFF CENTRES)	KEY DETAILS	ISO 5211 / MSS SP-101 MOUNTING OPTION	HOLE DETAILS (45° OFF CENTRES)	SPIGOT DIAMETER	MAX SCREW STEM ACCEPTANCE	STANDARD	MIN BORE	SQ KEY MAX BORE	SQ KEY SIZE	RECT. KEY MAX BORE	RECT. KEY SIZE	SQ BORE MAX
	Ø126x11 (Ø4.96"x0.41")	19.98-0.05 (0.787"-0.002")	Ø70.05+0.05 (Ø2.758"+0.002")	3 (0.12")	4 x Ø10.5 ON Ø102.0 P.C. (4 x Ø0.41" ON Ø4.02" P.C.)	6x6x40 (0.24"x0.24"x1.57")	F16	4 x M20 x 25 (0.98") DEEP ON Ø165.0 (Ø6.50") P.C.	Ø129.95-0.05 (Ø5.116"-0.002")	73 (2.875")	BS4235	-	-	-	68.0	20 x 12	□ 52.6 (2.071")
						FA16	4 x 3/4" UNC x 25 (0.98") DEEP ON Ø165.1 (Ø6.50") P.C.	Ø126.87-0.25 (Ø4.995"-0.010")	ANSI B17.1		-	2.500"	5/8" SQ.	2.625"	5/8" x 7/16"		
									DIN 6885		-	-	-	-	-		



AS PART OF CONTINUOUS PRODUCT DEVELOPMENT, ALL DETAILS SUBJECT TO CHANGE WITHOUT PRIOR NOTICE. FOR UP TO DATE DETAILS PLEASE VISIT <a href="http://www.rotork.com">www.rotork.com</a>															
1	2		3		4		5		6		7		8		
DESCRIPTION	TORQUE		CENTRE OF GRAVITY		Document Type		Mass		Title		Created		Checked		
33.2	25.40	73.19	2550	100	0	129	134	PUBLICITY	73.19 kg	HOS8 8:1 MPR4 GEARBOX STANDARD/E-FLANGE INPUT REDUCER, F16/FA16 OUTPUT.		E CHANG	J DICKINSON	20/02/2015	13/03/2015
										Dimensions in mm		Drawing Number		Iss.	
										Scale 1:5		PUB-HOS8MPR4-33.2-F16		01	
										Approved		Sheet 1 of 1		Size A3	