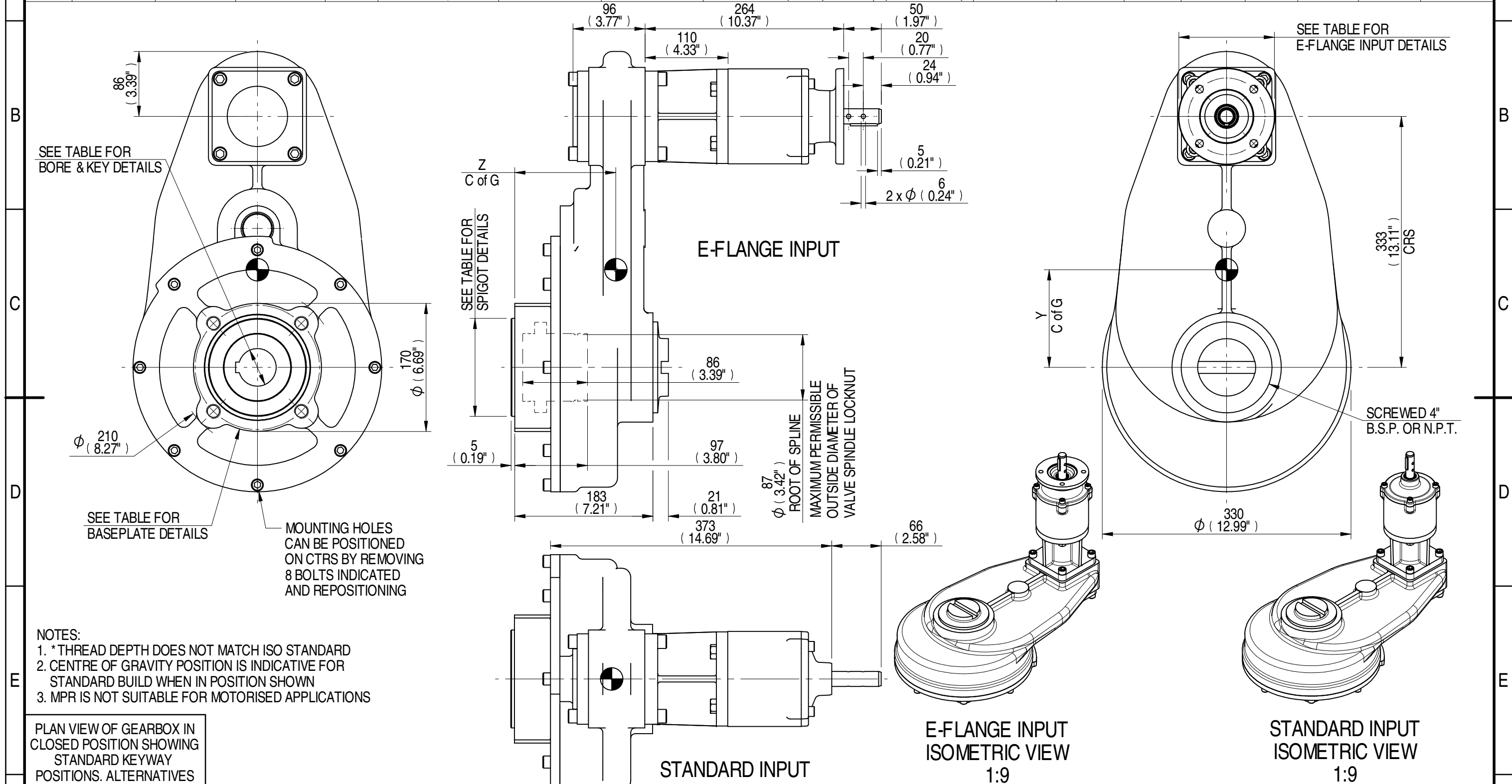


1		2			3		4			5		6			7			8
E-FLANGE INPUT DETAILS		E-FLANGE INPUT DETAILS		E-FLANGE INPUT DETAILS		MOUNTING HOLES - BOLT CIRCLE (OFF CENTRES)			MOUNTING HOLES - BOLT CIRCLE (OFF CENTRES)			STEM ACCEPTANCE IN ACCORDANCE TO STANDARD			STEM ACCEPTANCE IN ACCORDANCE TO STANDARD			
INPUT FLANGE	FLANGE O/DIA. + THICKNESS	SHAFT DIA.	RECESS DIA.	RECESS DEPTH	HOLE DETAILS (45° OFF CENTRES)	KEY DETAILS	ISO 5211 / MSS SP-101 MOUNTING OPTION	HOLE DETAILS (45° OFF CENTRES)	SPIGOT DIAMETER	MAX SCREW STEM ACCEPTANCE	STANDARD	MIN BORE	SQ KEY MAX BORE	SQ KEY SIZE	RECT. KEY MAX BORE	RECT. KEY SIZE	SQ BORE MAX	
	Ø126x11 (Ø4.96"x0.41")	19.98-0.05 (0.787"-0.002")	Ø70.05+0.05 (Ø2.758"+0.002")	3 (0.12")	4 x Ø10.5 ON Ø102.0 P.C. (4 x Ø0.41" ON Ø4.02" P.C.)	6x6x40 (0.24"x0.24"x1.57")	F16	4 x M20 x 25 (0.98") DEEP ON Ø165.0 (Ø6.50") P.C.	Ø129.95-0.05 (Ø5.116"-0.002")	73 (2.875")	BS4235	-	-	-	68.0	20 x 12	□ 52.6 (2.071")	
						FA16	4 x 3/4" UNC x 25 (0.98") DEEP ON Ø165.1 (Ø6.50") P.C.	Ø126.87-0.25 (Ø4.995"-0.010")	ANSI B17.1		-	2.500"	5/8" SQ.	2.625"	3/4" x 1/2"			
									DIN 6885		-	-	-	-	-	-		



AS PART OF CONTINUOUS PRODUCT DEVELOPMENT, ALL DETAILS SUBJECT TO CHANGE WITHOUT PRIOR NOTICE. FOR UP TO DATE DETAILS PLEASE VISIT www.rotork.com																	
rotork Gears LEEDS - UK www.rotork.com												Document Type PUBLICITY		Mass 72.95 kg		Title HOS8 MPR4 GEARBOX STANDARD/E-FLANGE INPUT REDUCER, F16/FA16 OUTPUT.	
												Created E CHANG		20/02/2015		Drawing Number	
												Checked J DICKINSON		13/03/2015		PUB-HOS8MPR4-F16	
												Approved				Sheet 1 of 1 Size A3	
DESCRIPTION			TORQUE			CENTRE OF GRAVITY			Scale 1:5		Iss. 01						
33.2	25.40	73.19	2550	100	0	129	134										
25.5	19.50	72.95	2550	131	0	130	134										
RATIO	M.A.	WEIGHT	MAX OUTPUT	MAX INPUT	X	Y	Z										