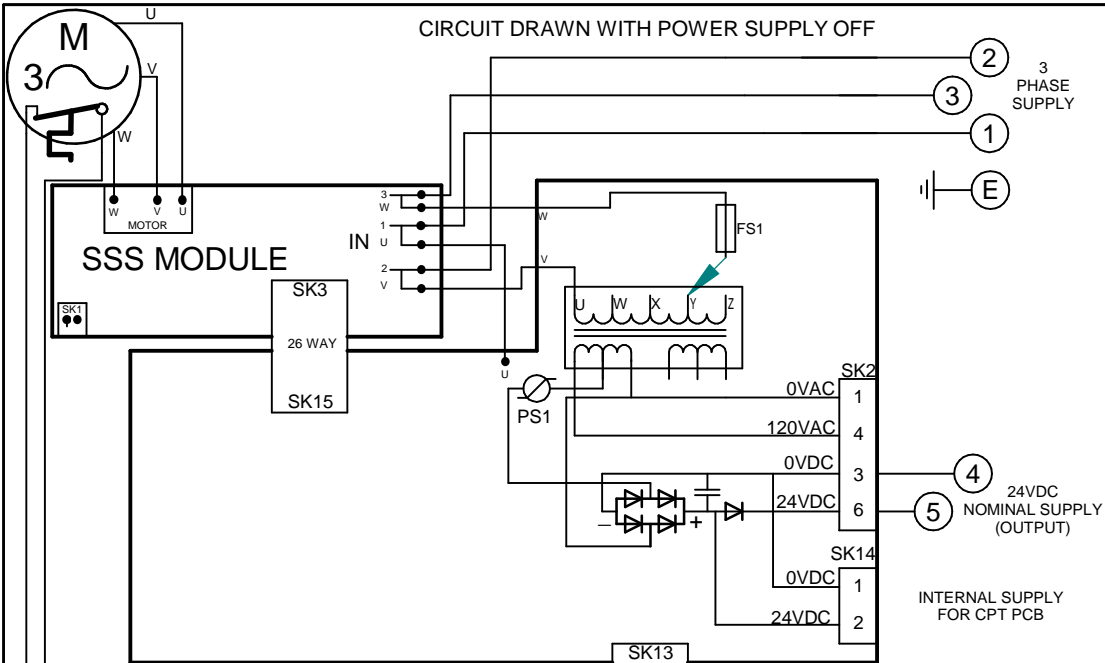


CIRCUIT DRAWN WITH POWER SUPPLY OFF

FOR TYPICAL REMOTE CONTROL
DETAILS, SEE DOCUMENT
RWS100

TRANSFORMER TAPPING OPTIONS	
Tap	Nominal 50/60Hz
TYPE 1	
W	220/230
X	380/400
Y	415/420
Z	440/460
FUZE FS1=250mA ANTI-SURGE	
TYPE 2	
W	346/380
X	480/500
Y	240/240
Z	550/575
FUZE FS1=250mA ANTI-SURGE	

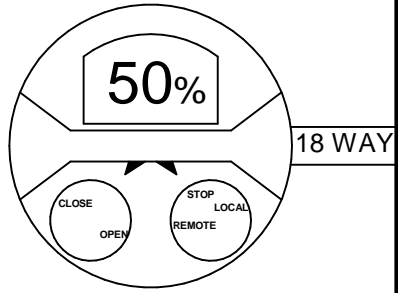
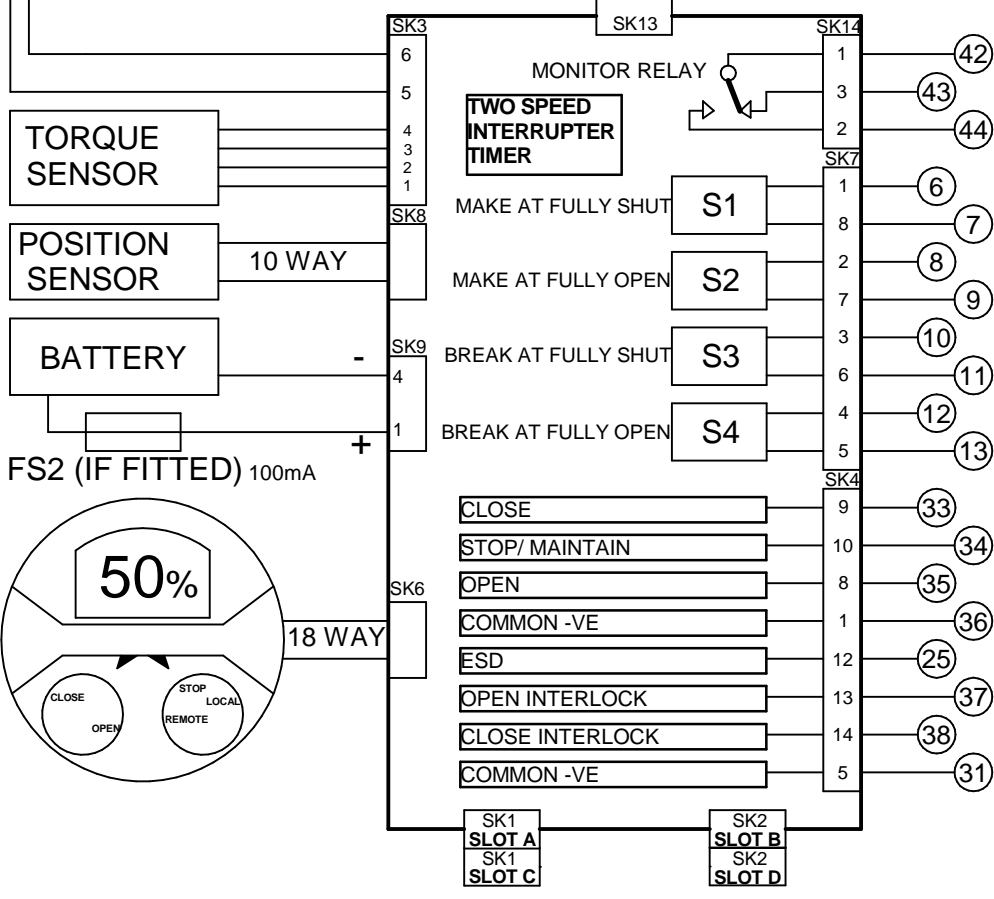


REFER TO SHEET 2 FOR NOTES
& OPTION PCB'S IF FITTED

THE ACTUATOR MUST BE
PROTECTED USING SUITABLY
RATED HIGH SPEED
SEMI-CONDUCTOR FUSES ON THE
INCOMING SUPPLY.

SUGGESTED FUSES :-

- IQ10-20:10 Amp FERRAZ G330010
- IQ25-35:20 Amp FERRAZ K330013
- ALTERNATIVES =
- IQ10-20:10 Amp SIBA 50-179-06/10A
- IQ25-35:20 Amp SIBA 50-179-06/20A
- OR EQUIVALENT PROTECTIVE
DEVICE.



Iss	Date	Chkd	Revision Details
1	140815	JC1	First Issue.
2	130616	PW	Updated notes on page 2.
3	091117	WHE	Foundation Fieldbus publication correction.

www.rotork.com

ROTORK CONTROLS LTD
BATH, BA1 3JQ
ENGLAND
Tel:01225-733200

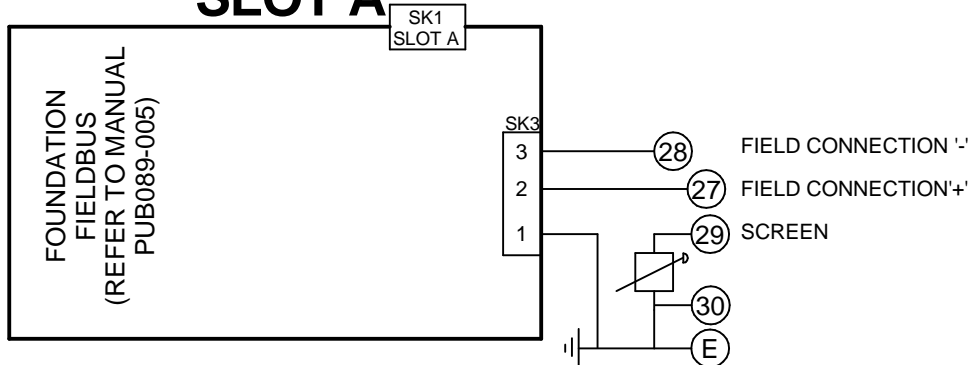
ROTORK CONTROLS INC
ROCHESTER
NY 14624, USA
Tel:585-247-2304

IQM + CPT + CTT + FOUNDATION FIELDBUS +
TIMER +RHS

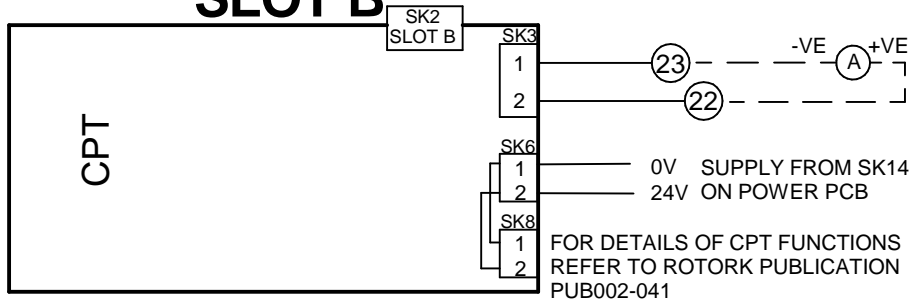
Drawn by: PJW
Date : 140815
Base WD: 202F2007
Job No : --
MI No : --

Circuit Diagram Number		Issue No	Sheet
202F2007		3	1
B1	C1	B2	C2

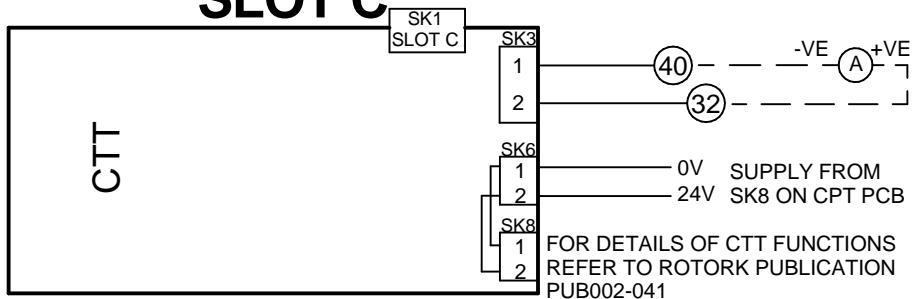
SLOT A



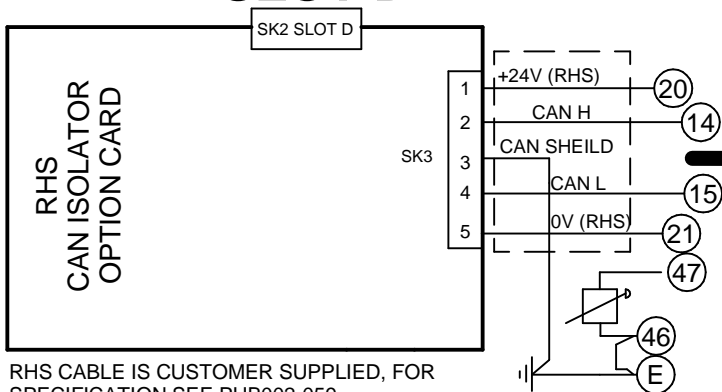
SLOT B



SLOT C



SLOT D



RHS CABLE IS CUSTOMER SUPPLIED, FOR SPECIFICATION SEE PUB002-059, MAXIMUM LENGTH OF CABLE TO BE 100m.

NOTES

1.FUSES:

- PS1 is a self-resetting fuse.
- Refer to publication PUB002-039 for approved fuses FS1 and FS2.

2.REMOTE CONTROL:

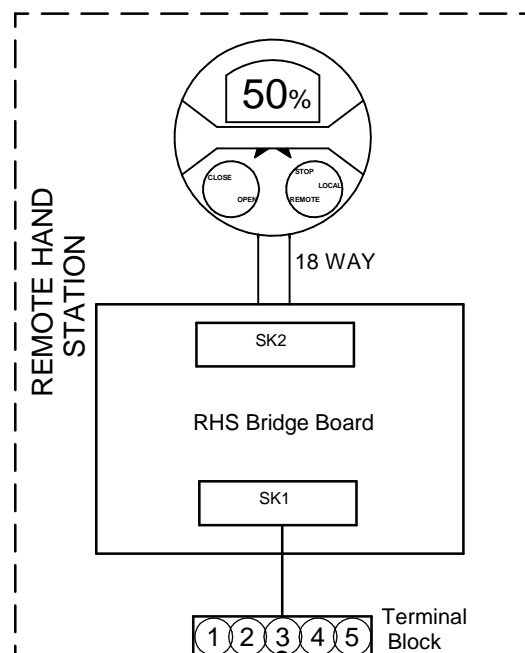
- For typical remote control circuits refer to: -RWS indicated or PUB002-041.
- For DC and AC control, connect -ve/0V to terminal 36.
- (For negative switch / positive common, refer to RWS indicated).
- Control signal threshold voltages:
 - DC: "on" ≥16Vdc / "off" ≤8Vdc, max 60Vdc.
- Control signal duration to be 100ms minimum.
- Maximum current drawn from remote control signals is:
 - 8mA at 24Vdc .
- Supply provided on terminals 4 & 5:
 - Intended for remote control.
 - Max external load 5W at 24Vdc

3.INDICATION:

- For typical position, status and alarm indication see PUB002-041.
- “S” contacts are user configurable and are shown in their default setting.
- Refer to PUB002-040 for functions and configuration instructions.
- Monitor Relay indicates actuator availability for remote control (shown “unavailable”). It can be configured to exclude local/remote selection.
- Refer to PUB002-040 for monitored functions and configuration instructions.
- Voltage applied to indication contacts must not exceed 150Vac
- Individual Switch current must not exceed 3.5A inductive, 5A resistive and no more than 8A in total for all 4 contacts.

4.BATTERY:

- Battery maintains local and remote “S” contact indication only.
- Refer to installation manual for approved replacement battery types.



Actuator Bung No.	RHS Terminal Block No.	Function
20	1	+24V (RHS)
21	2	0V (RHS)
14	3	CAN H
15	4	CAN L
47	5	SHEILD