

CIRCUIT DRAWN WITH
POWER SUPPLY OFF

FOR TYPICAL REMOTE CONTROL
DETAILS SEE DOCUMENT
RWS303

TRANSFORMER TAPPING OPTIONS

TAP	NOM 50/60HZ	50HZ	60HZ
W	200	160-220	180-236
X	220	176-242	198-259
Y	400	320-440	360-472
Z	440	352-484	396-519

FUSE FS1 - 250mA ANTI-SURGE

NOTE

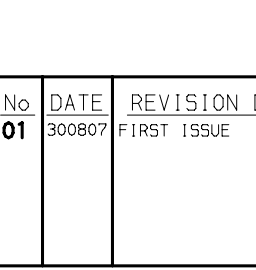
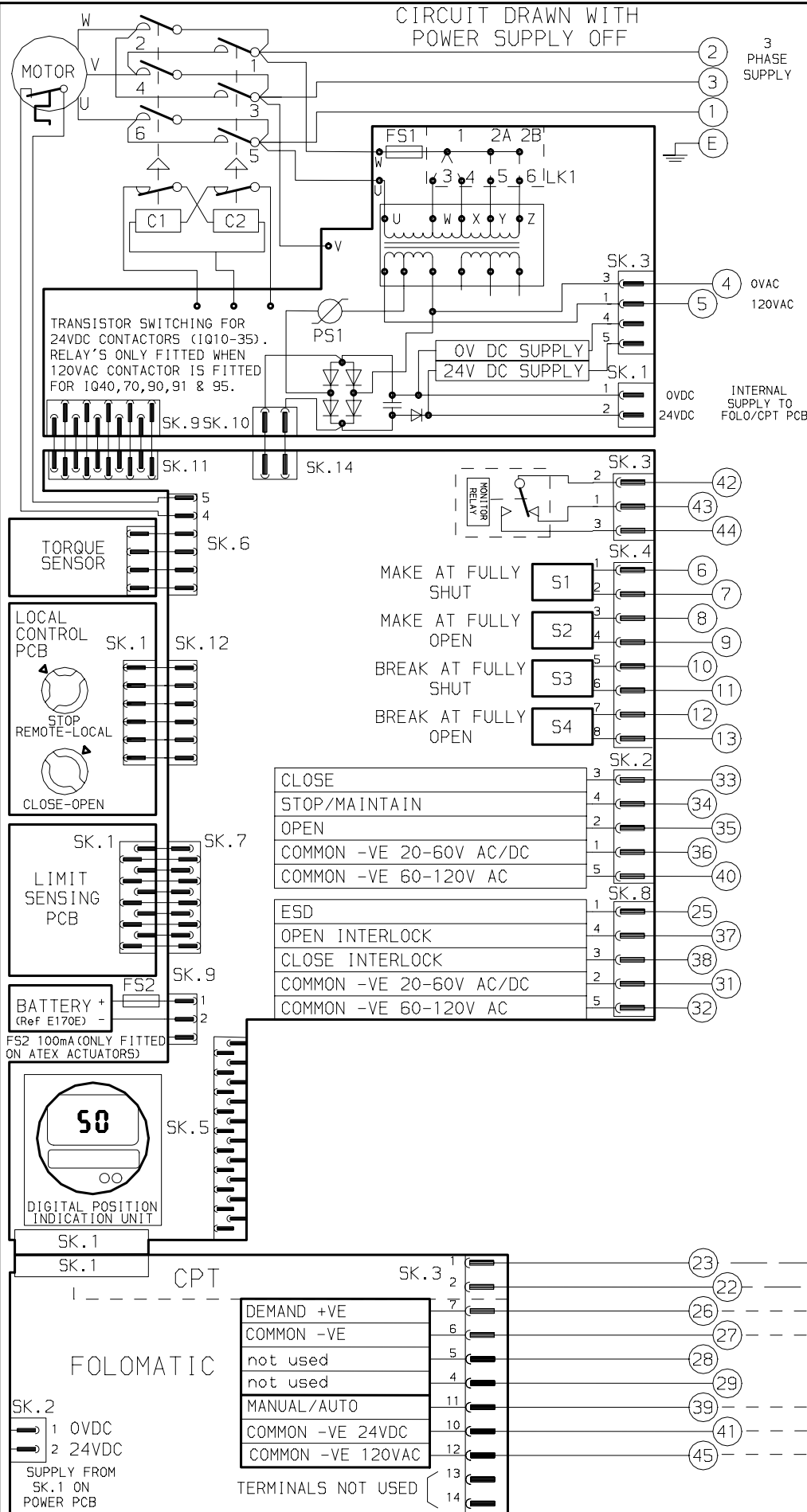
REFER TO PUBLICATION E170E FOR
APPROVED FUSES FS1 AND FS2.

MAX EXTERNAL LOAD ON TERMINALS
4 & 5 TO BE 15VA

CONTROL SIGNAL THRESHOLD VOLTAGES
TO BE MINIMUM 'ON' 20V AC/DC
MAXIMUM 'OFF' = 3V
MINIMUM CONTROL SIGNAL DURATION
TO BE 300ms.

CURRENT DRAWN FROM EACH REMOTE
CONTROL SIGNAL IS 5mA ON 24V DC
OR 12mA ON 120V AC

WIRES ARE IDENTIFIED AT EACH END
BY TERMINAL No. OR TAG No.



ANALOGUE INPUT SIGNAL FOR FOLOMATIC

FOR MANUAL/AUTO CONNECTIONS AND
DETAILS OF FOLOMATIC/CPT FUNCTIONS
REFER TO ROTORK PUBLICATION E120E

FOR MANUAL/AUTO CONFIGURATION
SETTINGS, PLEASE REFER TO E170E

INDICATION CONTACTS S1-S4 ARE SHOWN
IN THEIR DEFAULT CONFIGURATION.
CONTACTS MAY BE CONFIGURED FOR ANY
OF THE FUNCTIONS DESCRIBED IN E170E

No	DATE	REVISION DETAILS
01	300807	FIRST ISSUE

www.rotork.com

ROTORK CONTROLS LTD
BATH, BA1 3JQ
ENGLAND
Tel: 01225-733200

ROTORK CONTROLS INC
ROCHESTER
NY 14624, USA
Tel: 585-328-1550

CONFIG BY JC1
DATE 300807
CHECKED PJW
BASE WD 4010-101
JOB No **JZ2565**
M.I.No .

IQ JAPAN + FOLO + CPT
120VAC CONTROL SUPPLY

CIRCUIT DIAGRAM No -REV 102
4010-101-01

B1 C1 B2 C2