

CIRCUIT DRAWN WITH
POWER SUPPLY OFF

FOR TYPICAL REMOTE CONTROL
DETAILS SEE DOCUMENT
RWS300

TRANSFORMER TAPPING OPTIONS

TAP	NOM 50/60HZ	50HZ	60HZ
W	200	160-220	180-236
X	220	176-242	198-259
Y	400	320-440	360-472
Z	440	352-484	396-519

FUSE FS1 - 250mA ANTI-SURGE
PS1 SELF RESETTING FUSE.

NOTE

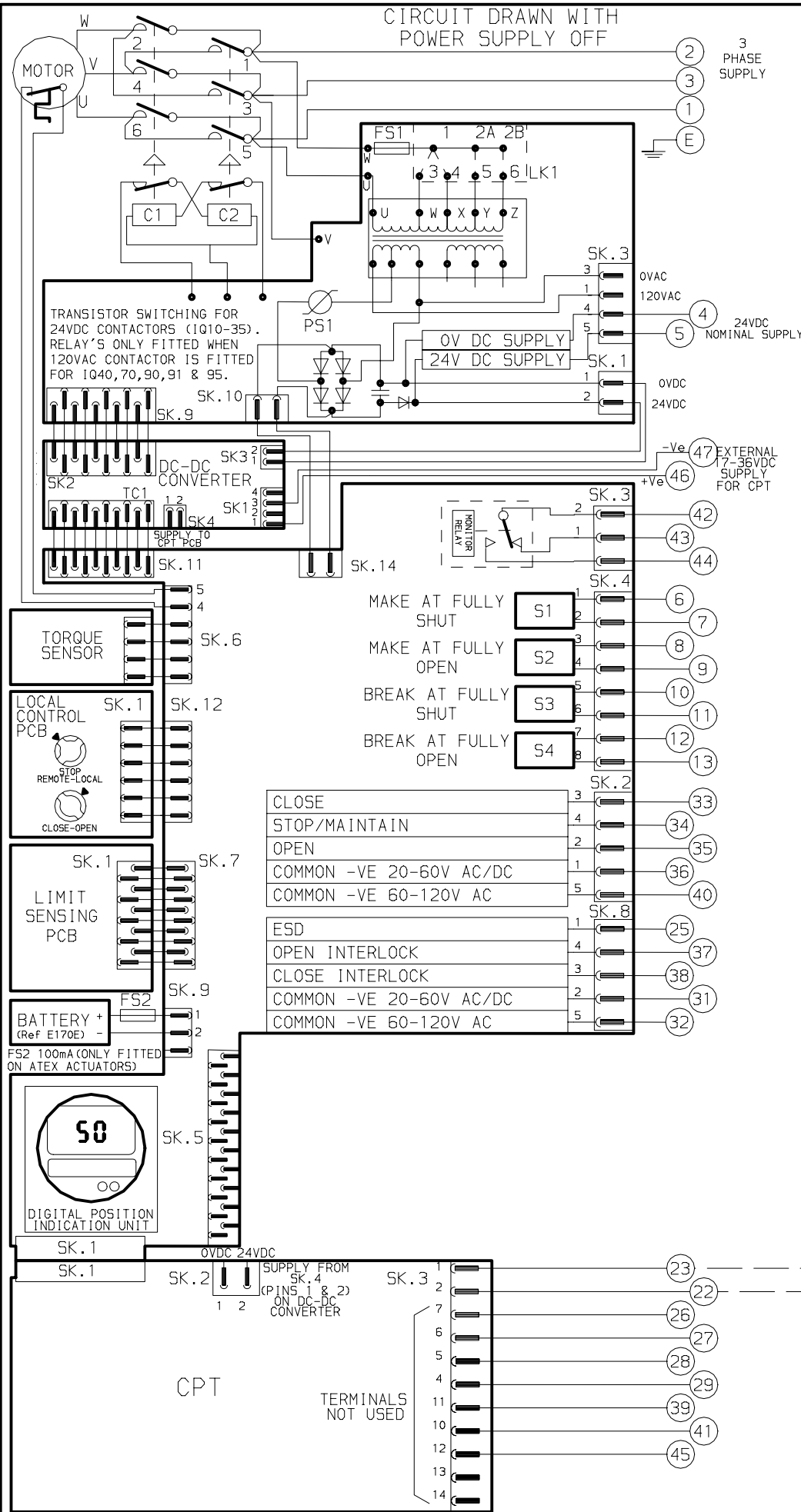
REFER TO PUBLICATION E170E FOR
APPROVED FUSES FS1 AND FS2.

MAX EXTERNAL LOAD ON TERMINALS
4 & 5 TO BE 5W.

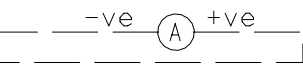
CONTROL SIGNAL THRESHOLD VOLTAGES
TO BE MINIMUM 'ON' 20V AC/DC
MAXIMUM 'OFF' = 3V
MINIMUM CONTROL SIGNAL DURATION
TO BE 300mS.

CURRENT DRAWN FROM EACH REMOTE
CONTROL SIGNAL IS 5mA ON 24V DC
OR 12mA ON 120V AC

WIRES ARE IDENTIFIED AT EACH END
BY TERMINAL No. OR TAG No.



CPT WILL FUNCTION NORMALLY WITH
3-PH POWER & NO AUX PWR,
BUT ON LOSS OF 3-PH CPT OUTPUT WILL
GO TO 0mA UNLESS AUX PWR IS FITTED



FOR DETAILS OF CPT FUNCTIONS
REFER TO ROTORK PUBLICATION E120E

INDICATION CONTACTS S1-S4 ARE SHOWN
IN THEIR DEFAULT CONFIGURATION.
CONTACTS MAY BE CONFIGURED FOR ANY
OF THE FUNCTIONS DESCRIBED IN E170E

No 02	DATE 110407	REVISION DETAILS IQ PRO UPDATE. EC2198/1	www.rotork.com		CONFIG BY P JW	IQ JAPAN TRANSFORMER + AUX POWERED CPT
					DATE 120405	
			ROTORK CONTROLS LTD BATH, BA1 3JQ ENGLAND Tel:01225-733200	ROTORK CONTROLS INC ROCHESTER NY 14624, USA Tel:585-328-1550	CHECKED DA	CIRCUIT DIAGRAM No -REV 4040-000-02
					BASE WD 4040-000	
					JOB No --	B1 C1 B2 C2
					M.I.No .	