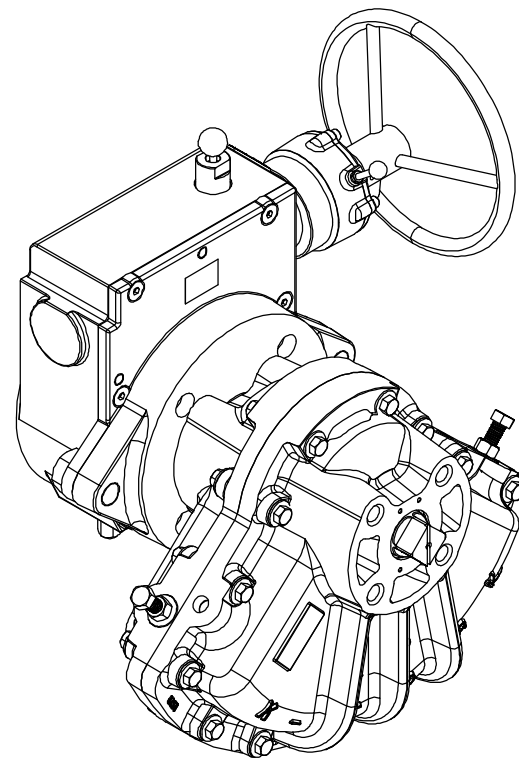
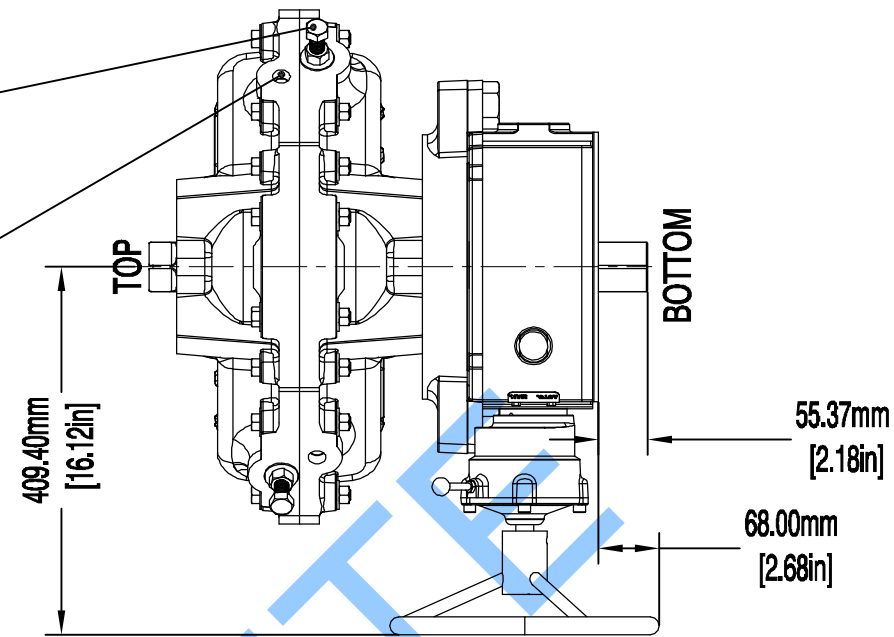


- NOTES:
- 1) MAX ALLOWABLE OPERATING PRESSURE (MAOP) = 10 BAR (150 PSIG)
 - 2) WARNING - SEE K-TORK INSTALLATION, OPERATION & MAINTENANCE MANUAL BEFORE MOUNTING, INSTALLING OR SERVICING.
 - 3) ACTUATOR SHOWN IN FULL CW POSITION, SCRIBE ON SHAFT SHOWS VANE LOCATION.
 - 4) WEIGHT 156.49 kg (345.00 LB.)
 - 5) RESTRICTED TRAVEL VERSIONS OPTIONAL.
 - 6) ACTUATOR MAY BE REMOVED FROM AUTOMATED VALVE WHILE GEAR REMAINS ATTACHED TO OPERATE THE VALVE OR DAMPER.
 - 7) GEARBOX MECHANICAL STOPS, ADJUSTABLE
 - 8) GEAR ENGAGEMENT LEVER
 - 9) DECLUTCH PULL - PIN

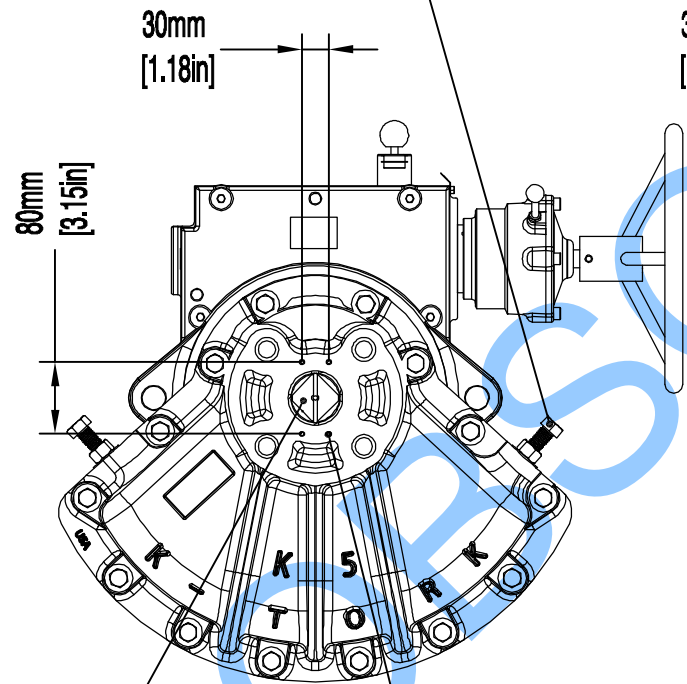


TRAVEL ADJUSTMENT
+/- 5° EACH DIRECTION

AIR PORTS
1/2" NPT
(STAGGERED)



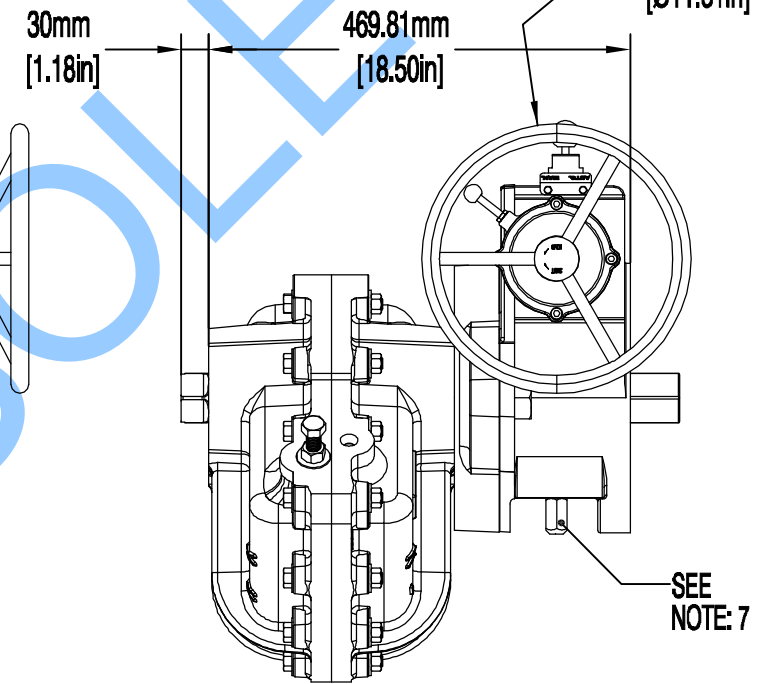
SEE NOTE: 5



SEE NOTE: 3

NAMUR
VDI/VDE 3845
M5 x .8

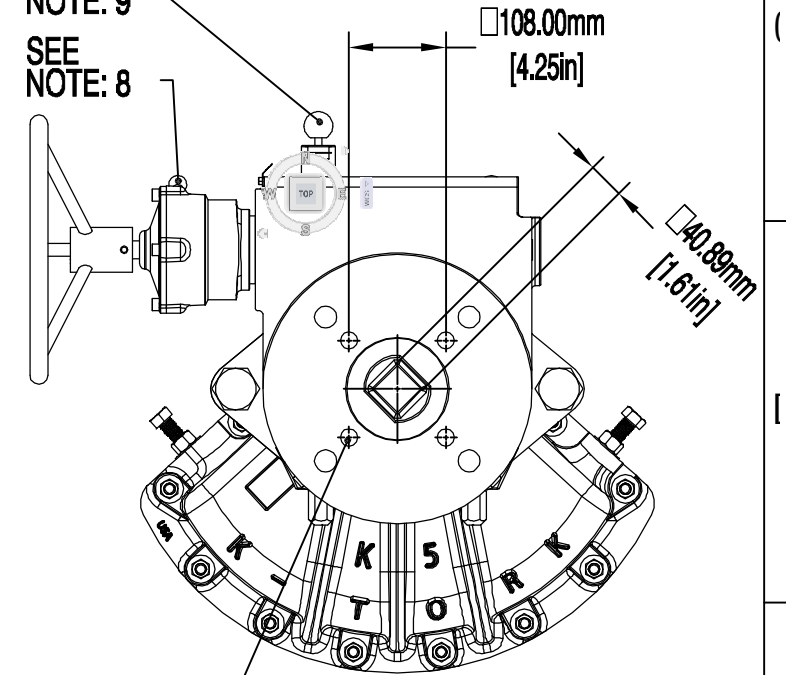
TOP VIEW



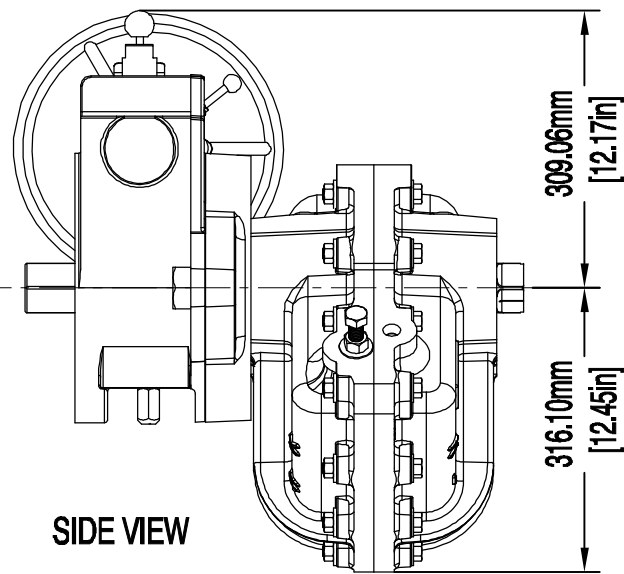
SEE NOTE: 7

SIDE VIEW

SEE NOTE: 9
SEE NOTE: 8



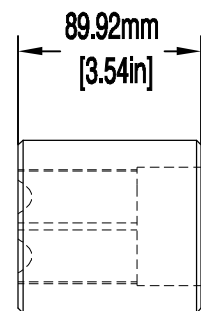
BOTTOM MOUNTING VIEW



SIDE VIEW

OPTIONAL COUPLING,
MILD STEEL

Ø84.94mm
[Ø3.34in]



(Ø58.17mm
[Ø2.29in])

BROACHED TO FIT BOTTOM DRIVE SHAFT



Texas - USA
www.rotork.com

This drawing is confidential and is the property of Rotork Dallas Inc. and must not be reproduced either wholly or partly. All rights in respect of patents, designs and copyrights are reserved. © 2015

Document type	DETAIL DRAWING		Title	
	Dimensions in mm		K-5-DA-HWMO - IMPERIAL AIR PORTS & MOUNTING HOLES	
	Scale 1:1			
Created	S.DINESH	30-JAN-2015	Drawing Number	Rev
Checked	S.SUDHIR	30-JAN-2015	D000000232	0
Approved	K.PRICE	30-JAN-2015	Sheet 1 of 1	Size A3