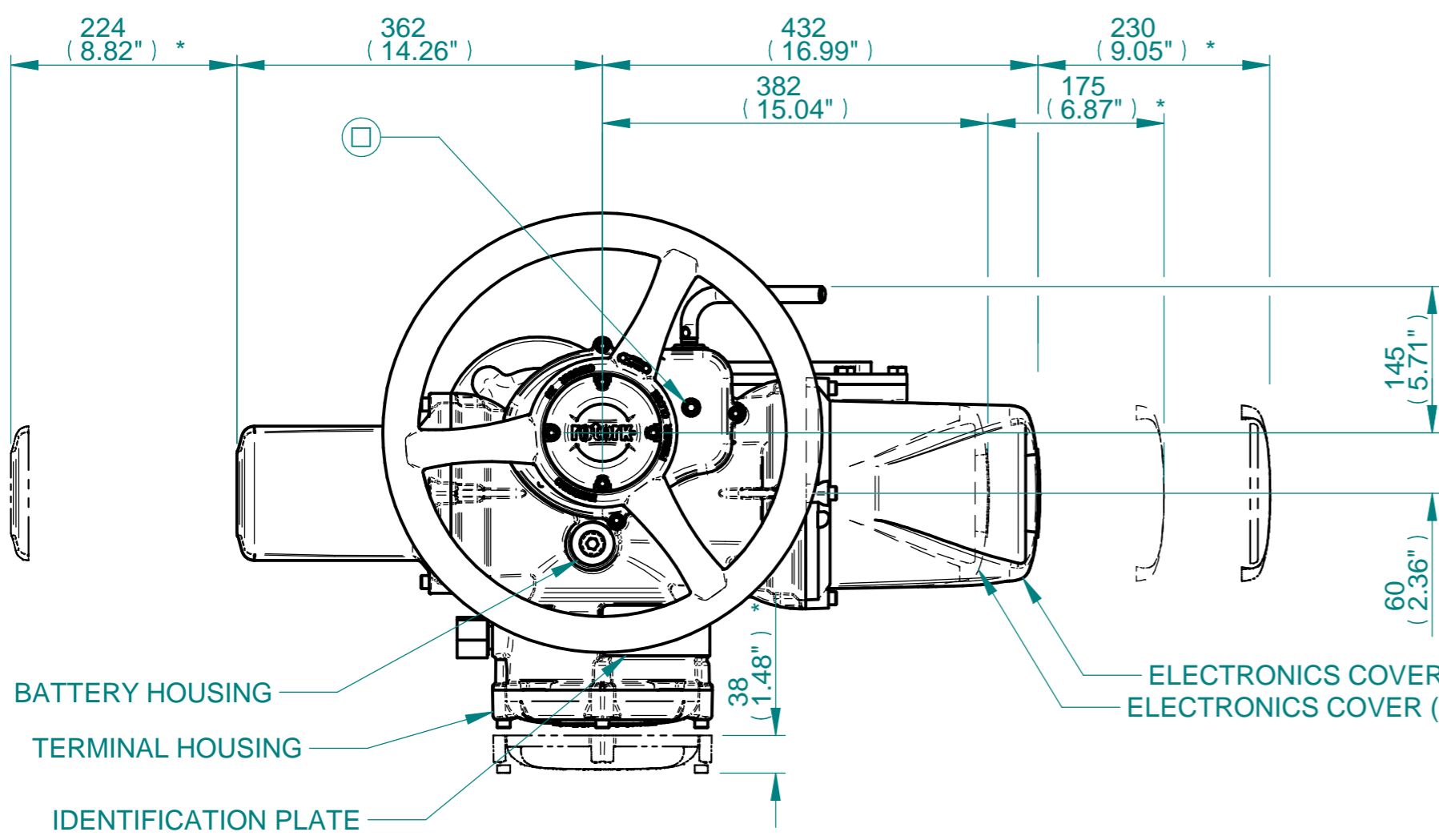
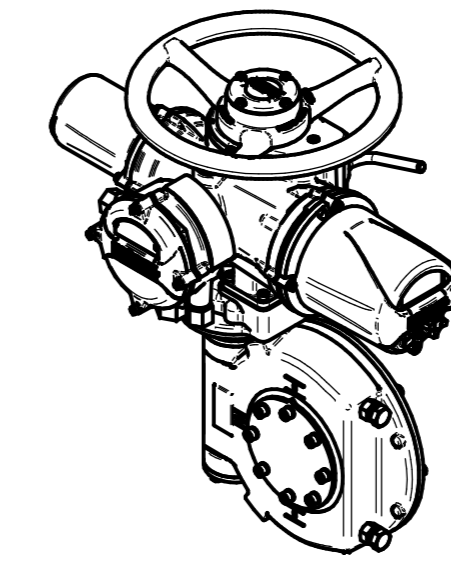


H
G
F
E
D
C
B
A



BATTERY HOUSING
TERMINAL HOUSING
IDENTIFICATION PLATE

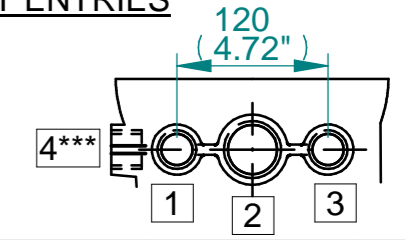
ELECTRONICS COVER (LONG) **
ELECTRONICS COVER (SHORT) **



ISOMETRIC VIEW
(SCALE 1:12)

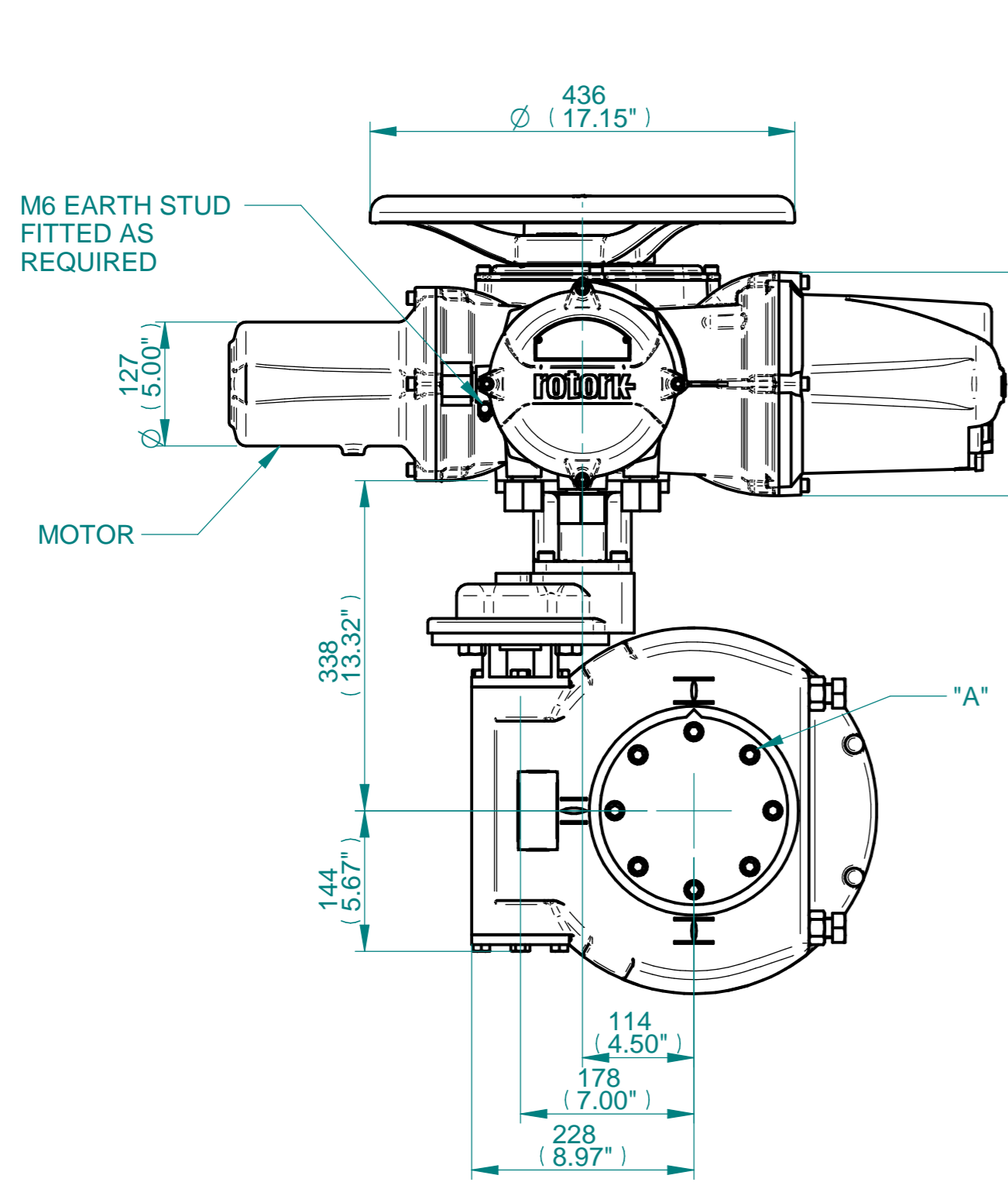
NOTES:
:DIMENSIONS WITH "*" INDICATE COVER REMOVAL ALLOWANCE
:ELECTRONICS COVER OPTION "****" WILL VARY DEPENDING ON CONFIGURATION
:NETT WEIGHT = 133kg/293lbs
: = OIL FILLER/DRAIN PLUG
:THE INTERFACE PROVIDED FOR MOUNTING THE ACTUATOR OR SECOND STAGE GEARBOX ONTO THE VALVE SHOULD CONFORM TO GOOD ENGINEERING PRACTICES, ENSURING ADEQUATELY TOLERANCED LIMITS FOR PARALLELISM, PERPENDICULARITY AND CONCENTRICITY.
:ROTORK CANNOT BE HELD LIABLE FOR DAMAGE TO OUR EQUIPMENT CAUSED BY EXCESSIVE LOADING FROM COVER TUBES. (SEE ALSO E156E)

CONDUIT ENTRIES



| | Hole 1 | Hole 2 | Hole 3 | Hole 4*** |
|---------|-------------|-------------|-------------|-------------|
| Size | As Required | As Required | As Required | As Required |
| Plugged | As Required | As Required | As Required | As Required |
| Gland | As Required | As Required | As Required | As Required |

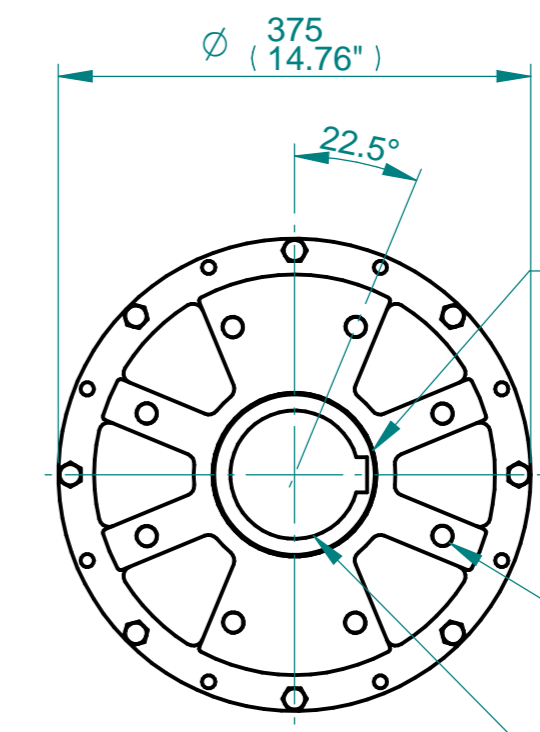
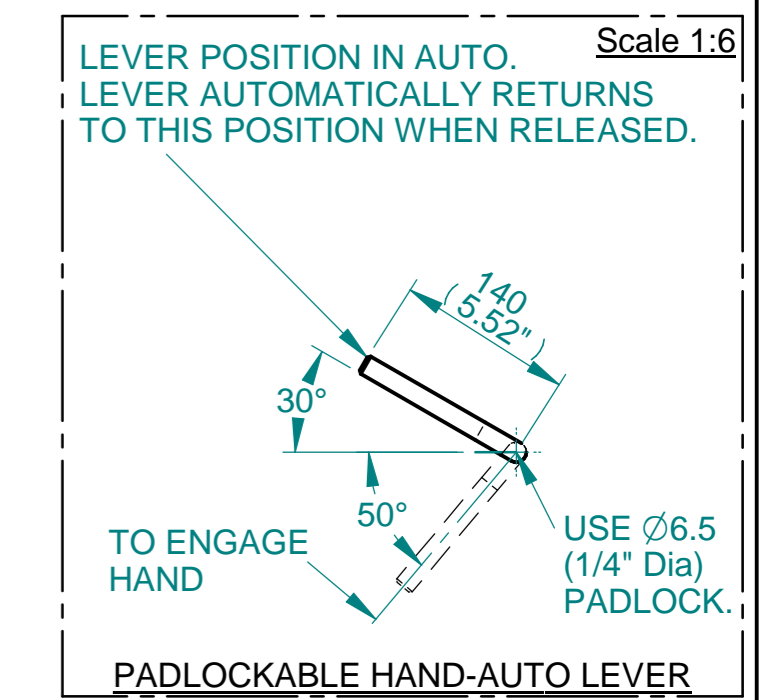
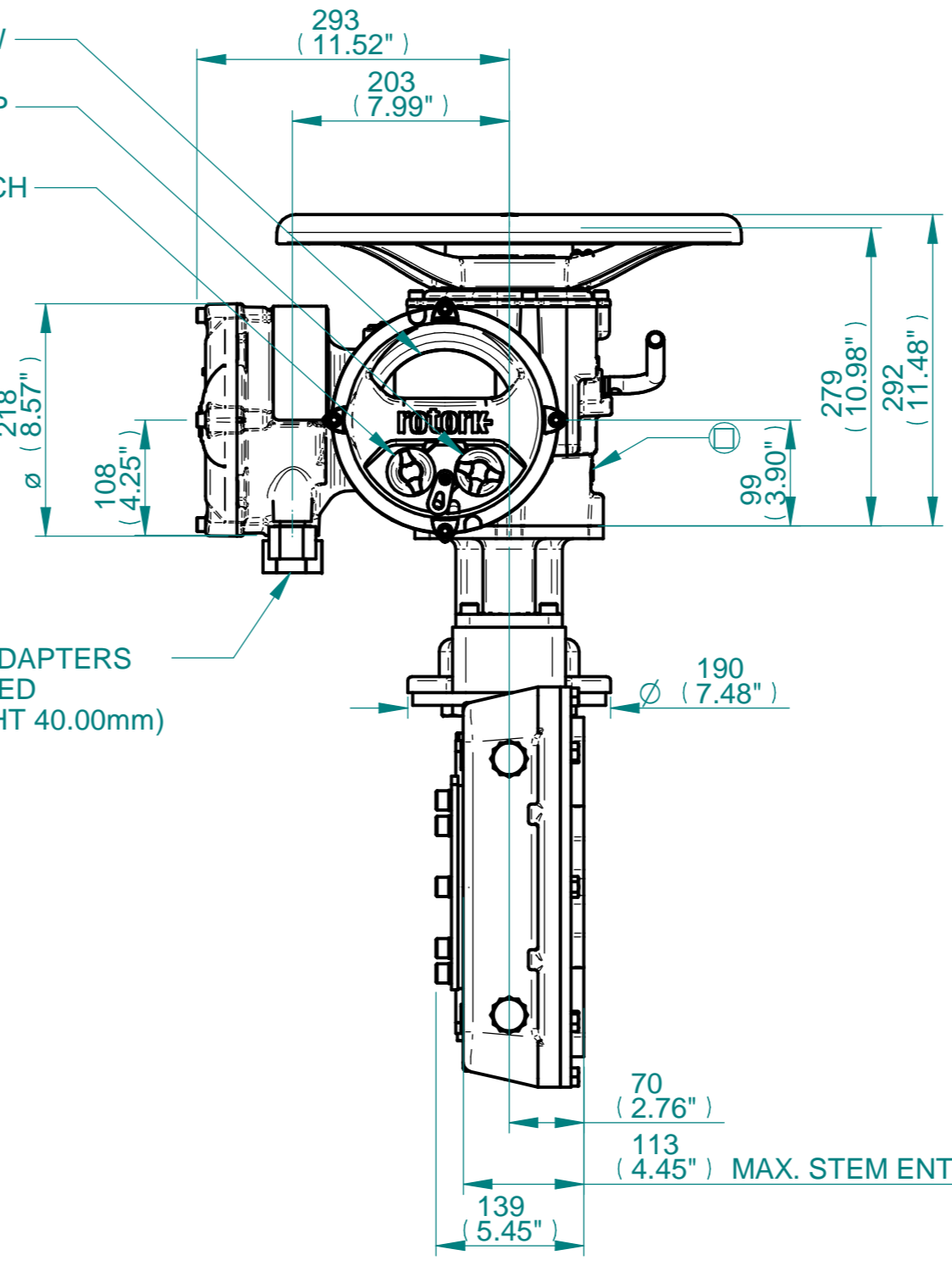
***HOLE 4 IS OPTIONAL



M6 EARTH STUD FITTED AS REQUIRED
MOTOR

DISPLAY WINDOW
LOCAL/REMOTE/STOP SWITCH
OPEN/CLOSE SWITCH

CONDUIT ADAPTERS AS REQUIRED (MAX HEIGHT 40.00mm)



N.B. KEYWAY POS. CAN BE MOVED IN 45° STEPS BY REMOVING 8 SCREWS MARKED "A" AND ROTATING OUTPUT SLEEVE
SEE GEARBOX OUTPUT FLANGE OPTIONS TABLE
SEE MAXIMUM BORE & KEY TABLE

3D Models are available in various formats under the same drawing number



| Actuator Size: IQ20/25 IWD6RL | | Gearbox output flange options | | | | | | | | Maximum Bore & Key | | |
|---|-----------------------|-------------------------------|-----|---|---|----------|----------|---|---|------------------------|--------|----------|
| Title IQ20/25, TOP HANDWHEEL, IWD6RL, F16/F25/FA16/FA25, Ratios 140:1 - 280:1 Installation Details | Designation | F16 | F25 | - | - | FA16 | FA25 | - | - | Key form | Ø Bore | Key size |
| | No. Holes | 4 | 8 | - | - | 4 | 8 | - | - | Rectangle (BS4235) | 102 | 28 X 16 |
| | Hole size | M20 | M16 | - | - | 3/4" UNC | 5/8" UNC | - | - | Rectangle (ANSI B17.1) | 3-7/8" | 1 X 3/4" |
| | PCD | 165 | 254 | - | - | 6.5" | 10" | - | - | Square (ANSI B17.1) | 3-3/4" | 7/8" SQ |
| Drawn NJC | Checked PMJ | Date 13-MAY-15 | | | | | | | | | | |
| Ref SALES | Project Ref QUOTATION | | | | | | | | | | | |

| Issue | Description |
|-------|-------------|
| 1 | First Issue |

Scale: 1:6 THIRD ANGLE PROJECTION

| Drawing Number | Issue No | Sheet No |
|-----------------|----------|----------|
| I12THWIWD6RLSTD | 1 | 1 of 1 |

1 2 3 4 5 6 7 8 9 10 11 12