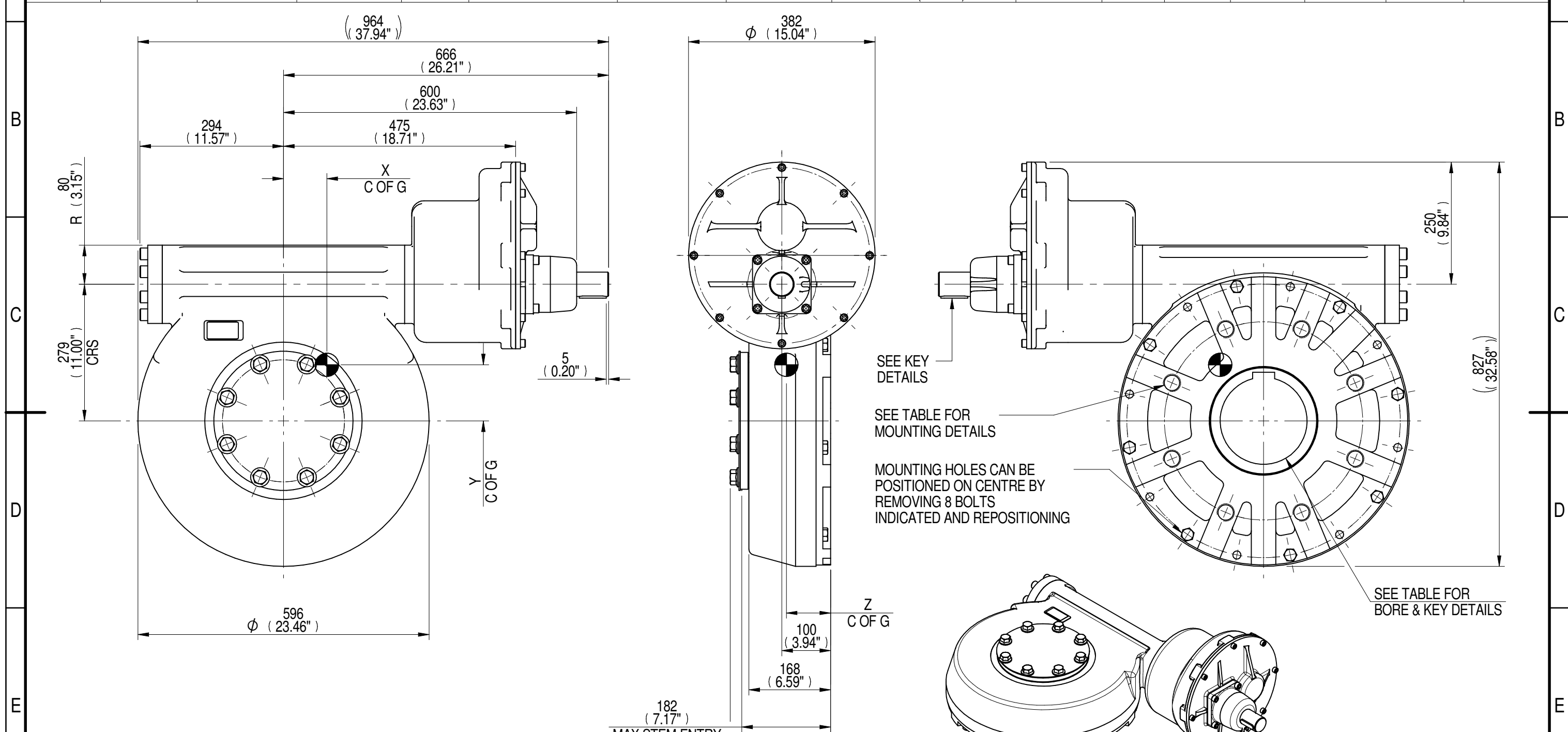


1	2		3		4		5			6			7		8
INPUT FLANGE DETAILS							MOUNTING HOLES - BOLT CIRCLE (OFF CENTRES)								
INPUT FLANGE	FLANGE O/DIA. + THICKNESS	SHAFT DIA.	RECESS DIA.	RECESS DEPTH	HOLE DETAILS (45° OFF CENTRES)	KEY DETAILS	ISO 5211 / MSS SP-101 MOUNTING OPTION	HOLE DETAILS (22.5° OFF CENTRES)	STANDARD	MIN BORE	SQ KEY MAX BORE	SQ KEY SIZE	RECT. KEY MAX BORE	RECT. KEY SIZE	SQ BORE MAX
-	-	Ø50.00-0.05 (Ø1.969"-0.002")	-	-	-	14x9x55 (0.55"x0.35"x2.17")	ISO F40*	8 x M36 x 36 (1.42") DEEP ON Ø406.0 (Ø15.98") P.C.	BS4235	-	-	-	178	45 x 25	□ 132.1 (5.20")
-	-	-	-	-	-	-	FA40*	8 x 1.25" UNC x 36 (1.42") DEEP ON Ø406.4 (Ø16.00") P.C.	ANSI B17.1	-	6.50"	1.1/2" SQ.	6.50"	1.5" x 1"	
-	-	-	-	-	-	-	-	DIN 6885	-	-	-	-	178	45 x 25	



SEE KEY DETAILS

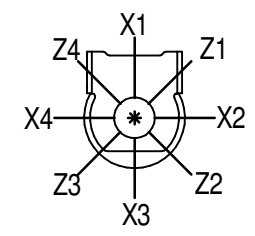
SEE TABLE FOR MOUNTING DETAILS

MOUNTING HOLES CAN BE POSITIONED ON CENTRE BY REMOVING 8 BOLTS INDICATED AND REPOSITIONING

SEE TABLE FOR BORE & KEY DETAILS

1:12

PLAN VIEW OF GEARBOX IN CLOSED POSITION SHOWING STANDARD KEYWAY POSITIONS. ALTERNATIVES AVAILABLE ON REQUEST



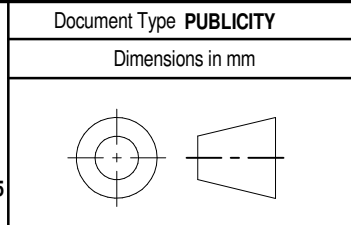
NOTES:
 1. * THREAD DEPTH DOES NOT MATCH ISO STANDARD
 2. CENTRE OF GRAVITY POSITION IS INDICATIVE FOR STANDARD BUILD WHEN IN POSITION SHOWN

RATIO	M.A.	WEIGHT (Kg)	MAX OUTPUT (Nm)	MAX INPUT (Nm)	X	Y	Z
2940	1100	-	42030	38	-	-	-
2520	900	304	42030	47	95	119	91
2347	875	-	42030	48	-	-	-
2160	855	299	42030	49	88	114	91
1440	570	301	42030	74	89	115	91
1080	428	302	42030	98	93	116	91
960	380	303	42030	111	94	117	91
DESCRIPTION	TORQUE			CENTRE OF GRAVITY			

AS PART OF CONTINUOUS PRODUCT DEVELOPMENT, ALL DETAILS SUBJECT TO CHANGE WITHOUT PRIOR NOTICE. FOR UP TO DATE DETAILS PLEASE VISIT www.rotork.com

rotork Gears
 LEEDS - UK
www.rotork.com

This drawing is confidential and is the property of Rotork Gears and must not be reproduced either wholly or partly. All rights in respect of patents, designs and copyrights are reserved. ©2015



Title MTW9 MULTI-TURN GEARBOX, 960/1080/1440/2160/2347/2520/2940:1, MANUAL INPUT, F40/FA40 OUTPUT		Iss. 01
Drawing Number PUB-MTW9IR3-MAN-F40		
Sheet 1 of 1	Size A3	