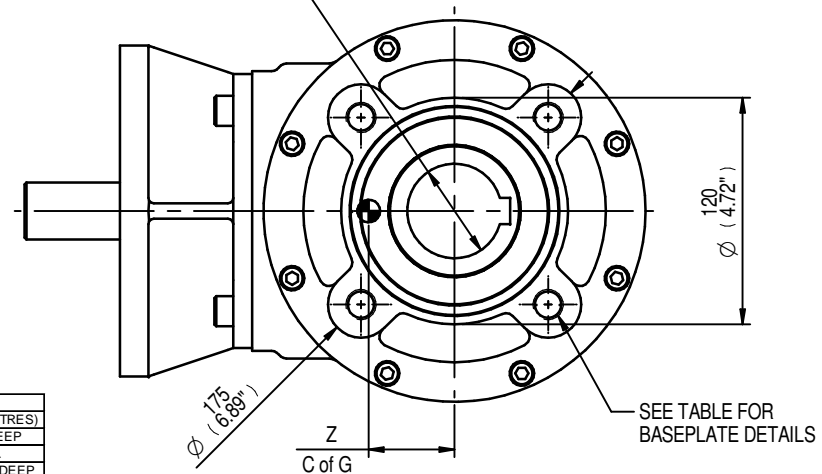


SEE TABLE FOR BORE & KEY DETAILS



RATIO	M.A.	C.O.G.			MAX OUTPUT TORQUE Nm (lbs.ft)
		X	Y	Z	
1	0.85	0	43	45	306 (225)

MAX BORE SQ KEY			MAX BORE RECTANGULAR KEY		
STD	BORE	KEY	STD	BORE	KEY
BS4235	-	-	BS4235	52.0	16x10
BS46	1.875"	1/2" SQ	BS46	2.000"	1/2"x5/16"
ANSI B17.1	1.875"	1/2" SQ	ANSI B17.1	2.000"	1/2"x3/8"

MAX STEM SCREW ACCEPTANCE DIA
55 (2.125")

	INPUT FLANGE DETAILS					KEY
	FLANGE O/DIA. & THICKNESS	SHAFT DIA.	RECESS DIA.	RECESS DEPTH	HOLE DETAILS 45°(OFF CENTRES)	
ISO F14	Ø175 x 15 (Ø6.89" x 0.59")	Ø30.00-0.05 (Ø1.181"-0.002")	Ø100.05+0.05 (Ø3.939"+0.002")	5 (0.20")	4 HOLES Ø16.5 (Ø0.65") ON Ø140.0 (Ø5.51") P.C.	8x7x40 (0.31"x0.28"x1.57")
	Ø175 x 15 (Ø6.89" x 0.59")	Ø30.00-0.05 (Ø1.181"-0.002")	Ø95.27+0.05 (Ø3.751"+0.002")	5 (0.20")	4 HOLES Ø16.5 (Ø0.65") ON Ø140.0 (Ø5.51") P.C.	8x7x40 (0.31"x0.28"x1.57")

	BASEPLATE DETAILS	
	SPIGOT DIA.	HOLE DETAILS (45° OFF CENTRES)
ISO F14	Ø99.96-0.05 (Ø3.935"-0.002")	4 HOLES M16x20 (0.79") DEEP ON Ø140.0 (Ø5.51") P.C.
FA14	Ø95.22-0.10 (Ø3.749"-0.004")	4 HOLES 5/8"UNCx20 (0.79") DEEP ON Ø139.7 (Ø5.50") P.C.

**rotork gears**

IB3 GEARBOX  
F14/FA14 INPUT F14/FA14 OUTPUT

DETAILS SUBJECT TO CHANGE WITHOUT PRIOR NOTICE

FOR UP TO DATE DETAILS VISIT [www.rotork.com](http://www.rotork.com)

APPROX WEIGHT 21.7 kg

DRAWING No	PUBIB3-F14-F14	Regina House Ring Road Bramley Leeds LS134ET United Kingdom
ISSUE	A	
DATE	27/04/2011	