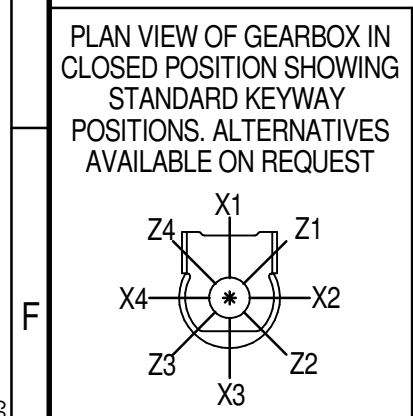
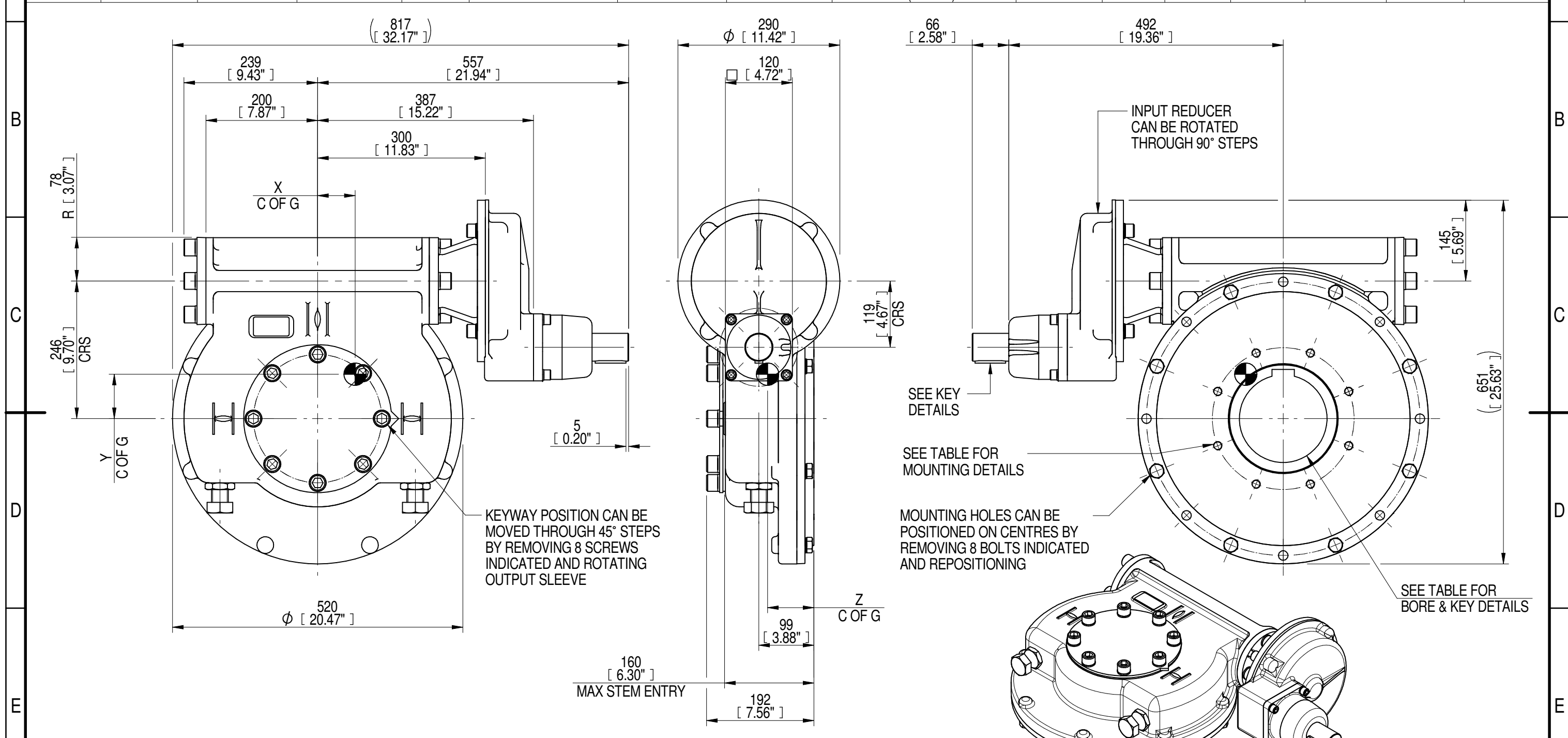


| 1                    | 2                         |                              | 3           |              | 4                          |                             | 5  |   | 6          |          |                 | 7           |                    | 8              |                 |
|----------------------|---------------------------|------------------------------|-------------|--------------|----------------------------|-----------------------------|--|---|------------|----------|-----------------|-------------|--------------------|----------------|-----------------|
| INPUT FLANGE DETAILS |                           |                              |             |              |                            |                             | MOUNTING HOLES - BOLT CIRCLE (OFF CENTRES) |   |            |          |                 |             |                    |                |                 |
| INPUT FLANGE         | FLANGE O/DIA. + THICKNESS | SHAFT DIA.                   | RECESS DIA. | RECESS DEPTH | HOLE DETAILS (OFF CENTRES) | KEY DETAILS                 | ISO 5211 / MSS SP-101 MOUNTING OPTION      | HOLE DETAILS (22.5° OFF CENTRES)                        | STANDARD   | MIN BORE | SQ KEY MAX BORE | SQ KEY SIZE | RECT. KEY MAX BORE | RECT. KEY SIZE | SQ BORE MAX     |
| -                    | -                         | Ø50.00-0.05 (Ø1.969"-0.002") | -           | -            | -                          | 14x9x55 (0.55"x0.35"x2.17") | ISO F25*                                   | 8 x M16 x 24 (0.94") DEEP ON Ø254.0 (Ø10.00") P.C.      | BS4235     | -        | -               | -           | 157                | 40 x 22        | □ 122.9 (4.84") |
| -                    | -                         | -                            | -           | -            | -                          | -                           | FA25*                                      | 8 x 5/8" UNC x 24 (0.94") DEEP ON Ø254.0 (Ø10.00") P.C. | ANSI B17.1 | -        | 5.625"          | 1.1/2" SQ.  | 6.00"              | 1.1/2" x 1"    |                 |
| -                    | -                         | -                            | -           | -            | -                          | -                           | -  | -   | DIN 6885   | -        | -               | -           | 157                | 40 x 22        |                 |



NOTES:  
 1. \* THREAD DEPTH DOES NOT MATCH ISO STANDARD  
 2. CENTRE OF GRAVITY POSITION IS INDICATIVE FOR STANDARD BUILD WHEN IN POSITION SHOWN

| RATIO | TURNS TO CLOSE | M.A. ± 10% | WEIGHT (Kg) | MAX OUTPUT (Nm) | MAX INPUT (Nm) | X  | Y  | Z  |
|-------|----------------|------------|-------------|-----------------|----------------|----|----|----|
| 360   | 90             | 142        | 175         | 48100           | 339            | 67 | 81 | 83 |
| 240   | 60             | 95         | 175         | 48100           | 506            | 67 | 80 | 83 |
| 180   | 45             | 71         | 175         | 48100           | 677            | 67 | 80 | 83 |
| 120   | 30             | 48         | 175         | 48100           | 1002           | 67 | 80 | 83 |

DESCRIPTION      TORQUE      CENTRE OF GRAVITY

AS PART OF CONTINUOUS PRODUCT DEVELOPMENT, ALL DETAILS SUBJECT TO CHANGE WITHOUT PRIOR NOTICE. FOR UP TO DATE DETAILS PLEASE VISIT [www.rotork.com](http://www.rotork.com)

**rotork** Gears  
 LEEDS - UK  
[www.rotork.com](http://www.rotork.com)

Document Type **PUBLICITY**  
 Dimensions in mm

Title  
**IW/MOW82 QUARTER TURN GEARBOX, 120/180/240/360 : 1, MANUAL INPUT : F25/ FA25 OUTPUT**

Drawing Number  
**PUB-IW82FBIRS-MAN-F25**

Iss. 01

Sheet 1 of 1 Size A3