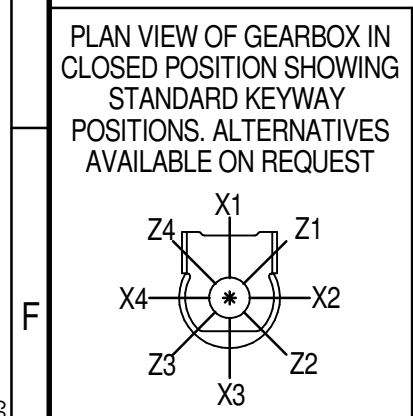
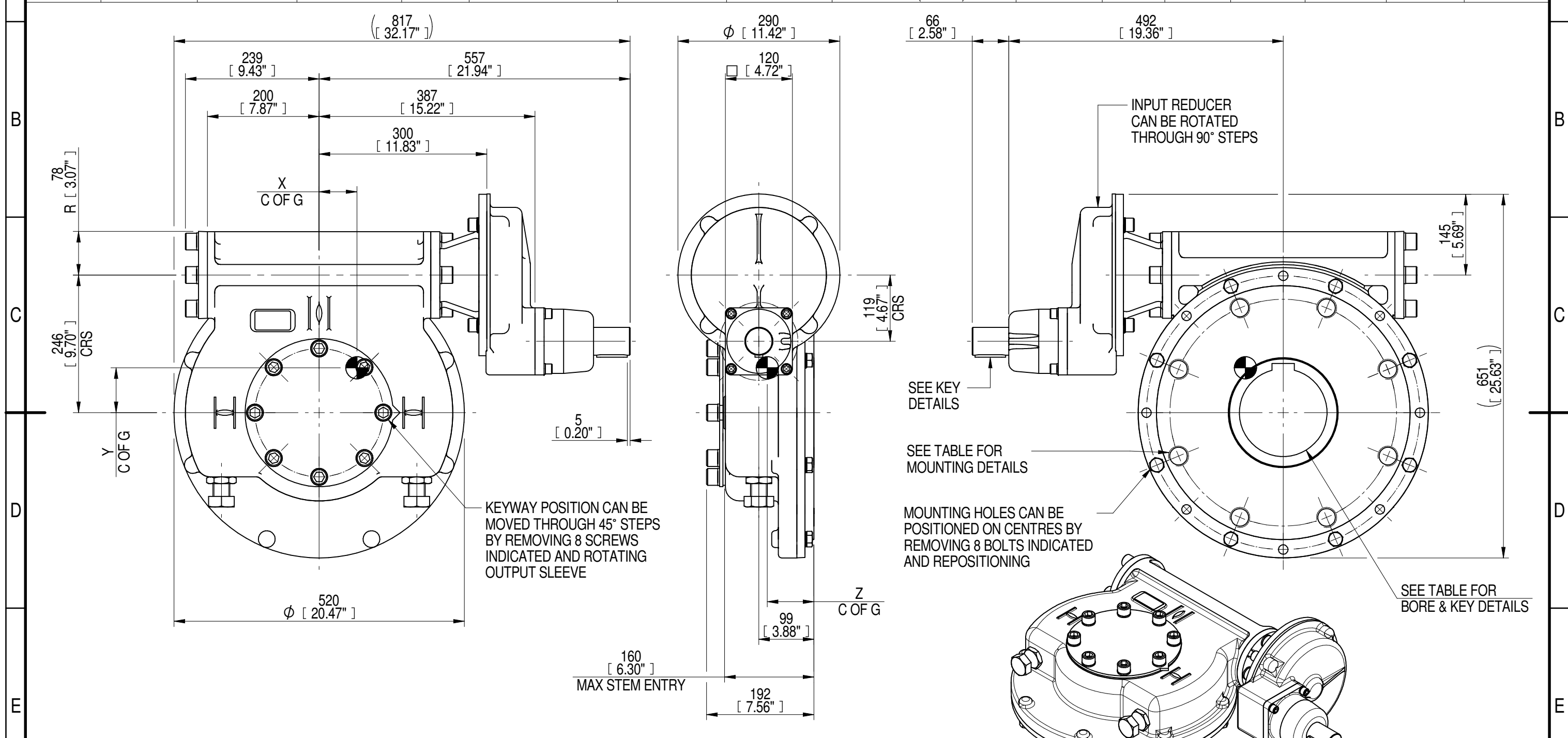


| INPUT FLANGE DETAILS | | | | | | | MOUNTING HOLES - BOLT CIRCLE (OFF CENTRES) | | | | | | | | |
|----------------------|---------------------------|------------------------------|-------------|--------------|----------------------------|-----------------------------|--|--|------------|----------|-----------------|-------------|--------------------|----------------|-----------------|
| INPUT FLANGE | FLANGE O/DIA. + THICKNESS | SHAFT DIA. | RECESS DIA. | RECESS DEPTH | HOLE DETAILS (OFF CENTRES) | KEY DETAILS | ISO 5211 / MSS SP-101 MOUNTING OPTION | HOLE DETAILS (22.5° OFF CENTRES) | STANDARD | MIN BORE | SQ KEY MAX BORE | SQ KEY SIZE | RECT. KEY MAX BORE | RECT. KEY SIZE | SQ BORE MAX |
| - | - | Ø50.00-0.05 (Ø1.969"-0.002") | - | - | - | 14x9x55 (0.55"x0.35"x2.17") | ISO F40* | 8 x M36 x 36 (1.42") DEEP ON Ø406.0 (Ø15.98") P.C. | BS4235 | - | - | - | 157 | 40 x 22 | □ 122.9 (4.84") |
| - | - | - | - | - | - | - | FA40* | 8 x 1.25" UNC x 36 (1.42") DEEP ON Ø406.4 (Ø16.00") P.C. | ANSI B17.1 | - | 5.625" | 1.1/2" SQ. | 6.00" | 1.1/2" x 1" | |
| - | - | - | - | - | - | - | - | - | DIN 6885 | - | - | - | 157 | 40 x 22 | |



NOTES:
 1. * THREAD DEPTH DOES NOT MATCH ISO STANDARD
 2. CENTRE OF GRAVITY POSITION IS INDICATIVE FOR STANDARD BUILD WHEN IN POSITION SHOWN

| RATIO | TURNS TO CLOSE | M.A. ± 10% | WEIGHT (Kg) | MAX OUTPUT (Nm) | MAX INPUT (Nm) | X | Y | Z |
|-------|----------------|------------|-------------|-----------------|----------------|----|----|----|
| 360 | 90 | 142 | 174 | 48100 | 339 | 68 | 81 | 83 |
| 240 | 60 | 95 | 174 | 48100 | 506 | 68 | 81 | 83 |
| 180 | 45 | 71 | 174 | 48100 | 677 | 68 | 81 | 83 |
| 120 | 30 | 48 | 174 | 48100 | 1002 | 68 | 80 | 83 |

DESCRIPTION TORQUE CENTRE OF GRAVITY

AS PART OF CONTINUOUS PRODUCT DEVELOPMENT, ALL DETAILS SUBJECT TO CHANGE WITHOUT PRIOR NOTICE. FOR UP TO DATE DETAILS PLEASE VISIT www.rotork.com

rotork Gears
 LEEDS - UK
www.rotork.com

Document Type **PUBLICITY**
 Dimensions in mm

Title
IW/MOW82 QUARTER TURN GEARBOX, 120/180/240/360 : 1, MANUAL INPUT : F40/ FA40 OUTPUT

Drawing Number
PUB-IW82FBIRS-MAN-F40

Sheet 1 of 1 Size A3