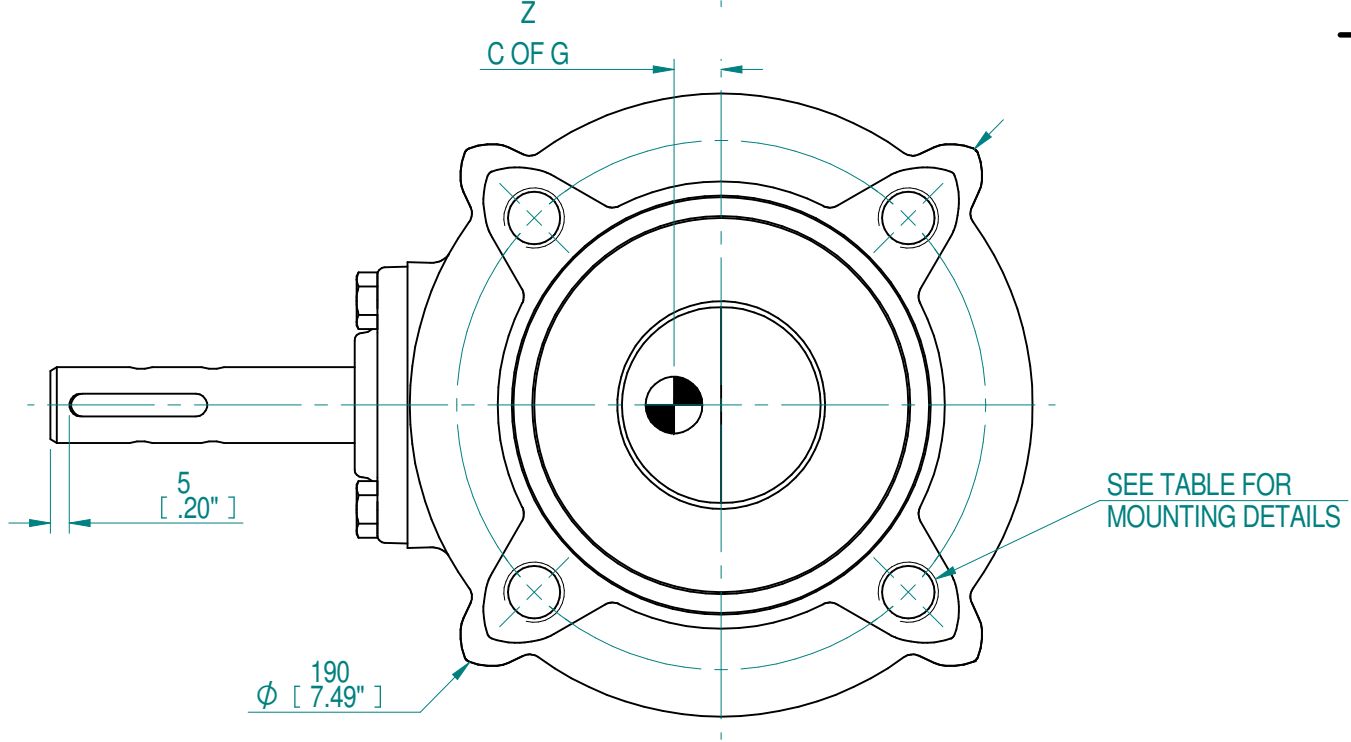
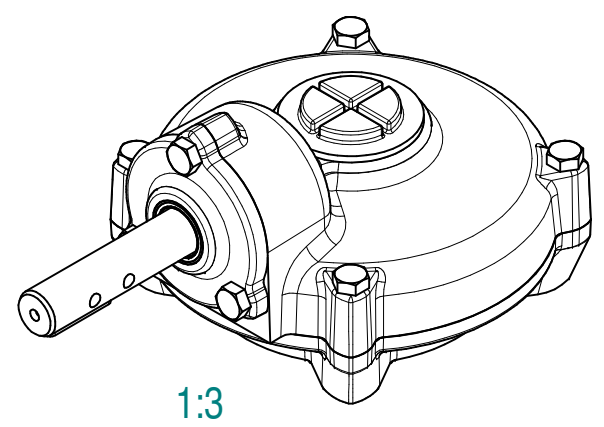
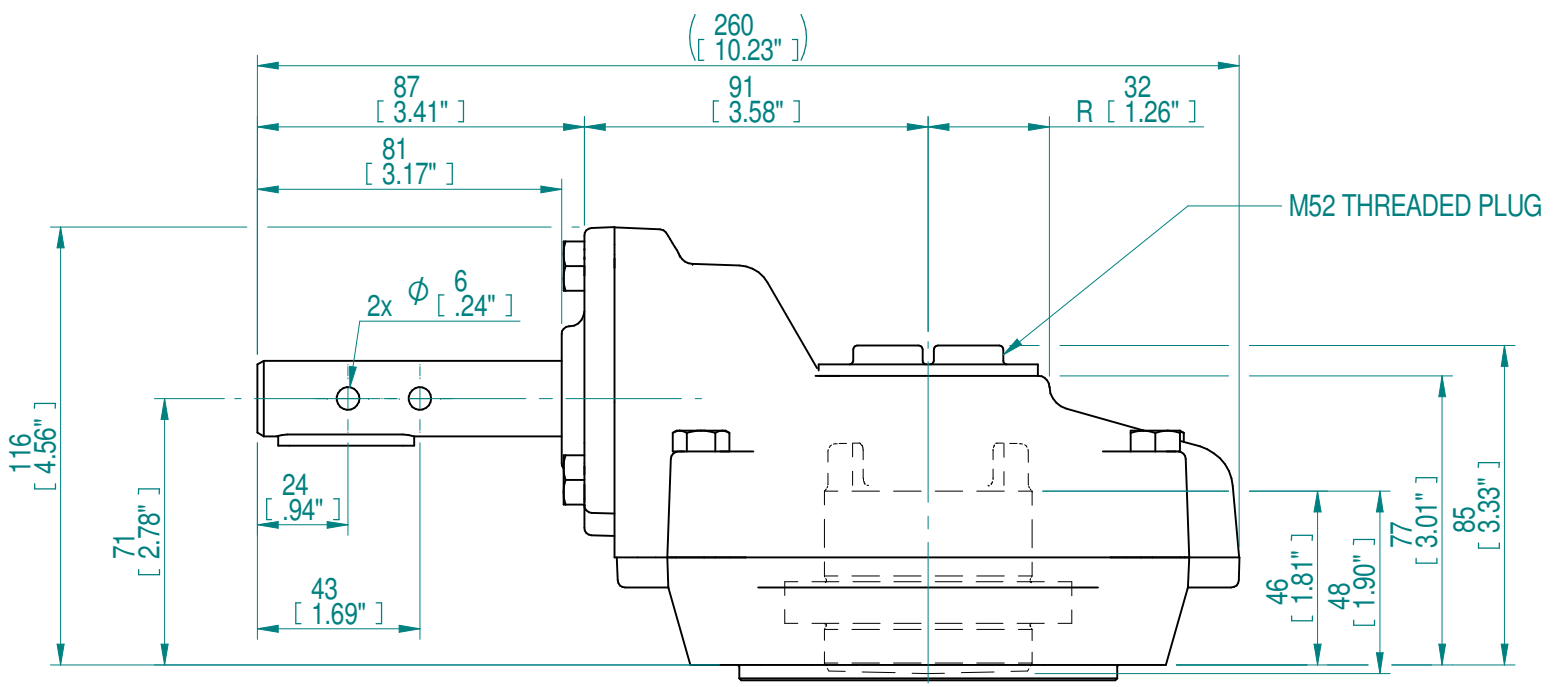
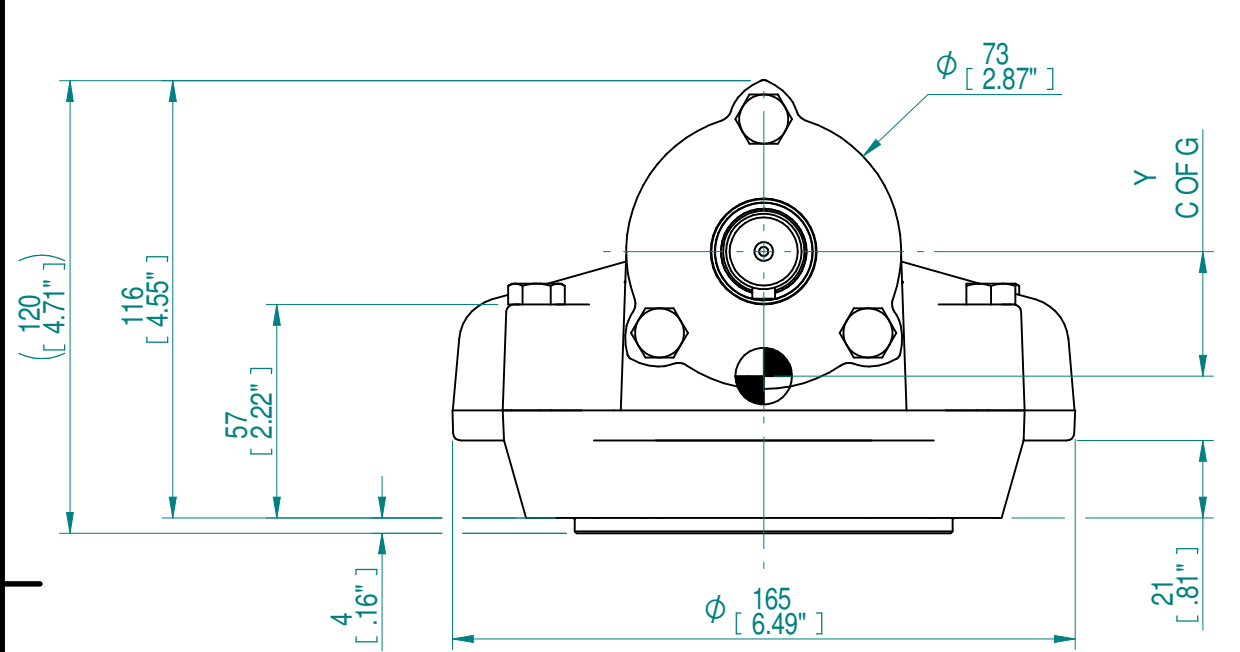


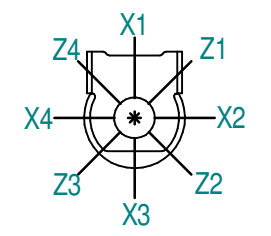
KEYWAY MACHINING (1 OR 2 KEYS AT 180°)				
STANDARD	SQ KEY MAX BORE	SQ KEY SIZE	RECT. KEY MAX	RECT. KEY SIZE
BS4235	1.500"	□3/8"	40	12 x 8
BS46			7/16" x 5/16"	
ANSI B17.1			3/8" x 1/4"	
DIN 6885			40	12 x 8

KEYWAY MACHINING (4, 3 OR 2 KEYS AT 90°)				
STANDARD	SQ KEY MAX BORE	SQ KEY SIZE	RECT. KEY MAX	RECT. KEY SIZE
BS4235	1.250"	□5/16"	32	12 x 8
BS46			3/8" x 1/4"	
ANSI B17.1			5/16" x 1/4"	
DIN 6885			32	12 x 8

STEM ACCEPTANCE IN ACCORDANCE TO STANDARD			INPUT DETAILS		MOUNTING HOLES - BOLT CIRCLE (OFF CENTRES)		
MAX SCREW STEM ACCEPTANCE	MAX SQ BORE	MAX SLOT SIZE	SHAFT DIA.	KEY DETAILS	ISO 5211 / MSS SP-101 MOUNTING OPTION	HOLE DETAILS (OFF CENTRES)	SPIGOT DIAMETER
40 (1.57")	□28 (1.10")	40 x 28AF (1.57" x 1.10"AF)	Ø20-0.10 (0.787"-0.004")	6x6x36 (0.24"x0.24"x1.42")	F14	4xM16x24 (0.94") DEEP ON Ø140 (Ø5.51") P.C.	Ø99.95-0.05 (Ø3.94"-0.02")
					FA14	4x5/8-11"UNCx24 (0.94") DEEP ON Ø139.7 (Ø5.50") P.C.	Ø95.21-0.03 (Ø3.749"-0.02")



PLAN VIEW OF GEARBOX IN CLOSED POSITION SHOWING STANDARD KEYWAY POSITIONS. ALTERNATIVES AVAILABLE ON REQUEST



NOTES:
1. CENTRE OF GRAVITY POSITION IS INDICATIVE FOR STANDARD BUILD WHEN IN POSITION SHOWN

3	N/A	2.6	7.4Kg	270Nm	108Nm	0	33	12
RATIO	TURNS TO CLOSE	M.A. ±15%	WEIGHT	MAX OUTPUT	MAX INPUT	X	Y	Z
DESCRIPTION			TORQUE			CENTRE OF GRAVITY		

AS PART OF CONTINUOUS PRODUCT DEVELOPMENT, ALL DETAILS SUBJECT TO CHANGE WITHOUT PRIOR NOTICE. FOR UP TO DATE DETAILS PLEASE VISIT www.rotork.com

	This drawing is confidential and is the property of Rotork Gears and must not be reproduced either wholly or partly. All rights in respect of patents, designs and copyrights are reserved. ©2016	Document Type PUBLICITY	Title HOB3 PUBLICITY ASSEMBLY - F14/FA14 OUTPUT HOB3
	LEEDS - UK www.rotork.com	Dimensions in mm	Drawing Number PUB-HOB3-F14_FA14
		Sheet 1 of 1	Size A3