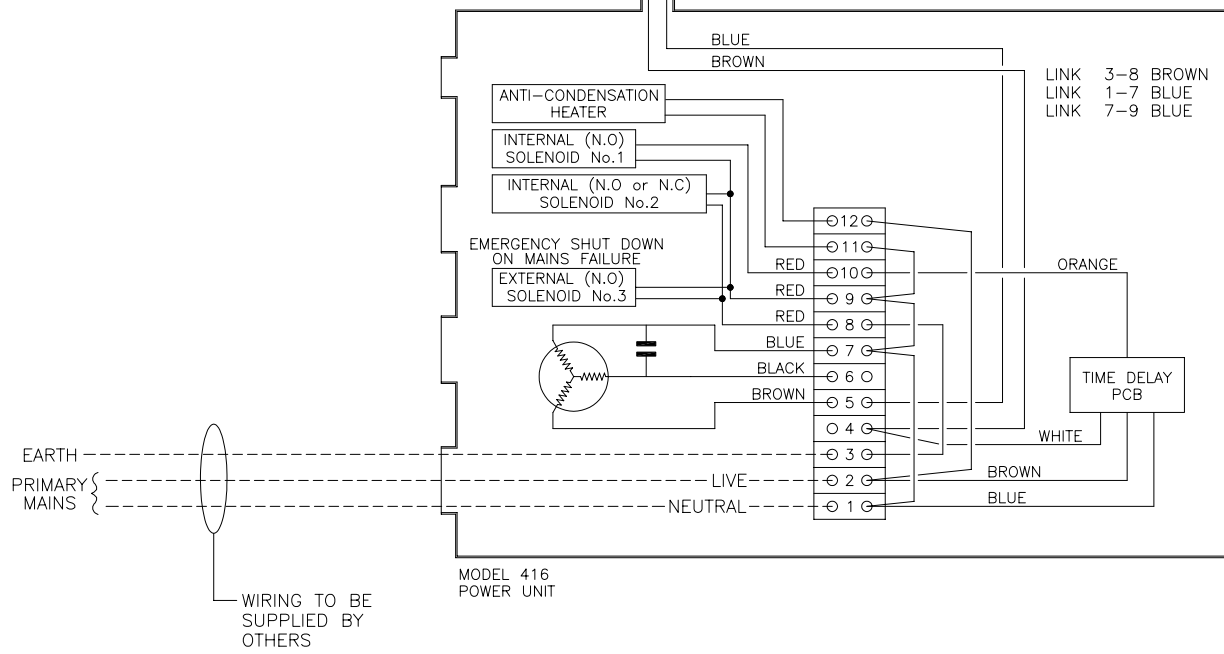
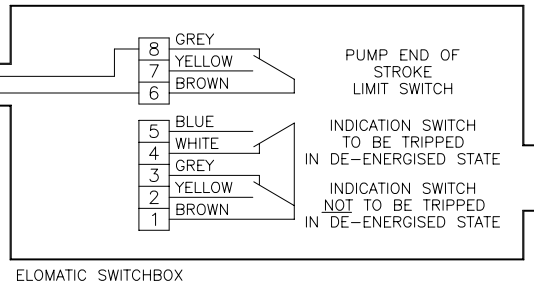


INDICATION SWITCHES TO BE SET TO TRIP APPROX. 5° BEFORE EACH END POSITION AS STANDARD.
OTHER POSITIONS TO BE SET BY CLIENT BY ADJUSTING DESIRED CAM POSITION.



NOTICE: - THIS DRAWING IS CONFIDENTIAL AND IS THE PROPERTY OF ROTORK SKILMATIC AND MUST NOT BE REPRODUCED EITHER WHOLLY OR PARTLY. ALL RIGHTS IN RESPECT OF PATENTS, DESIGNS AND COPYRIGHTS ARE RESERVED. FORM No. SK A3 3/95

REV	DATE	DESCRIPTION	CH.No.	BY	CHK	DRAWN	SNR
							10/05/01
						CHECKED	
						DATE	
						APPROVED	
						DATE	
						SCALE - NOT TO SCALE	
						DRAWING TO BS.308	

DRAWING TITLE
WIRING DIAGRAM FOR MODEL 416/417 WITH ON/OFF CONTROL AND SWITCHBOX, END OF STROKE CUT OFF + 2 SPARE LIMIT SWITCHES

MATL:-
FINISH:-
GENERAL TOLERANCE TO ±0.3mm
M/C SURFACES TO BS.1134 μm Ra
REMOVE SHARP CORNERS

rotork skilmatic Regina House
Ring Road
Bramley
Leeds
LS13 4ET

DRG. No. **SMW-338** REV **0**

SHEET 1 OF 1