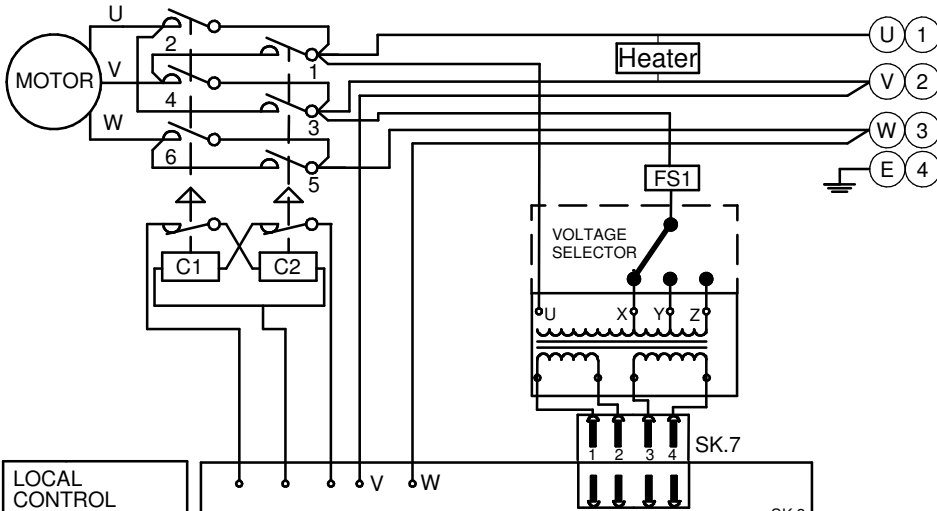


CIRCUIT DRAWN WITH
POWER SUPPLY OFF

THREE
PHASE
SUPPLY



TRANSFORMER TAPPING

TAP	NOM 50/60HZ	50HZ	60HZ
X	220/230	176-242	198-259
Y	380/400	304-418	342-446
Z	440/460	352-484	396-517

FS1 - See ROMPAK PUB008-006 Installation and Maintenance Manual

NOTE

FOR TYPICAL REMOTE CONTROL INDICATING, MONITORING AND ALARM CIRCUITS SEE PUBLICATION DOC862

MAX EXTERNAL LOAD ON S1/S2 RELAYS TO BE 5A. MAX VOLTAGE 120V AC/DC

MAX EXTERNAL LOAD ON TERMINAL 27 & 28 TO BE 3W

CONTROL SIGNAL THRESHOLD VOLTAGES:

- MAX 60V DC
- TO BE MINIMUM 'ON' 14V DC AT 1mA
- MAXIMUM 'OFF' = 3V
- MINIMUM CONTROL SIGNAL DURATION TO BE 300mS.

CURRENT DRAWN FROM EACH REMOTE CONTROL SIGNAL IS 5mA ON 24V DC

LS3 / LS4

MAXIMUM CURRENT 3A MAXIMUM VOLTAGE 120V AC/DC

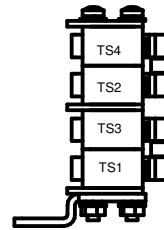
ACTUATOR CONFIGURATION VIA DIL SWITCH SW2

ROM1 AND ROMA DO NOT SUPPORT TORQUE LIMIT

REFER TO INSTALLATION INSTRUCTIONS FOR DIL SWITCH SELECTION

TS3 / TS4

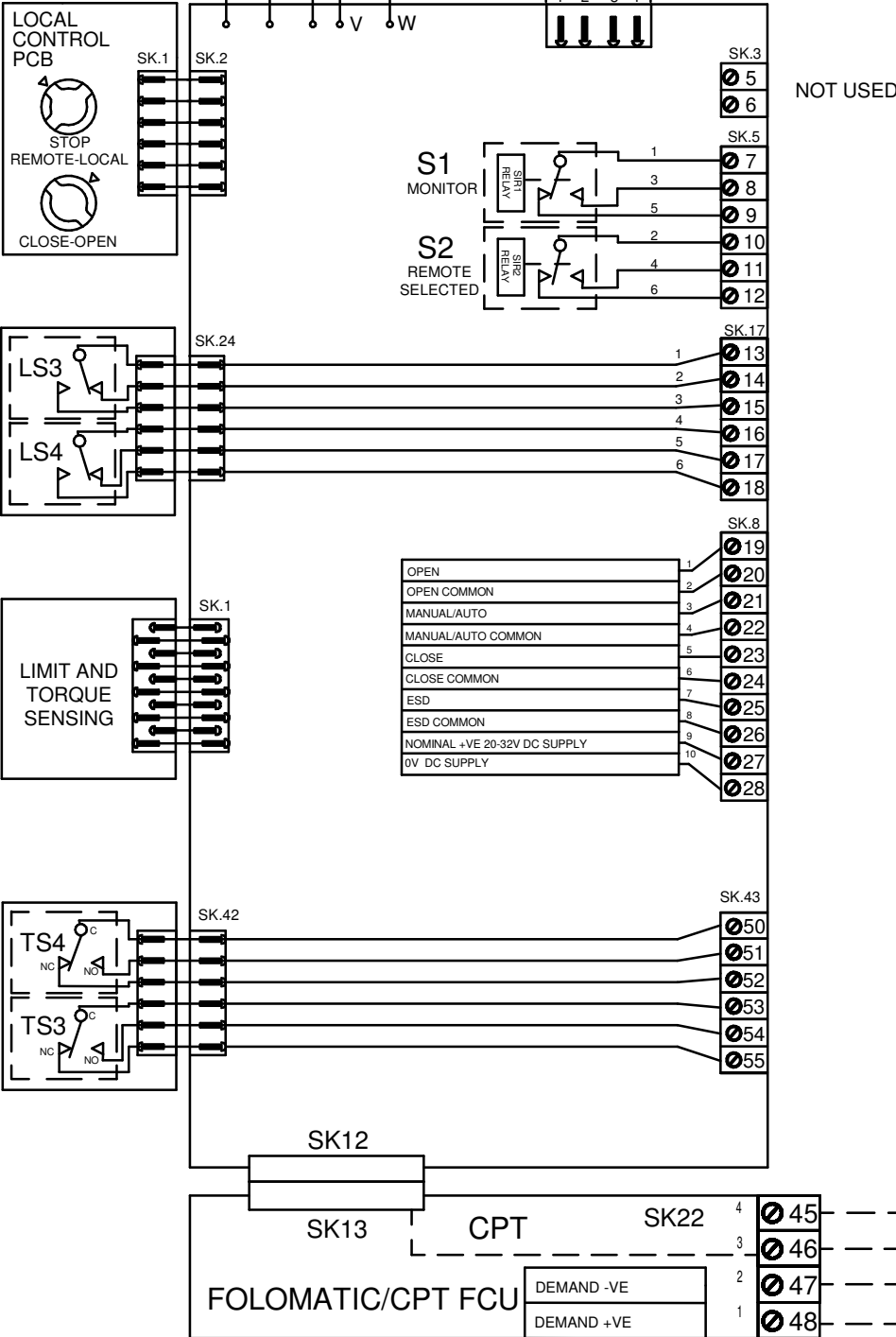
MAXIMUM CURRENT 10A MAXIMUM VOLTAGE 250V AC VOLTAGE APPLIED FOR TS3 / TS4 MUST BE SAME



FOLOMATIC DEFAULTS TO 4-20 mA 0-20 mA CONTROL

CPT 4-20 mA
4 mA = CLOSED
20 mA = OPEN

FOR MANUAL/AUTO CONNECTIONS AND DETAILS OF FOLOMATIC/CPT FUNCTIONS REFER TO ROTORK PUBLICATION PUB008-006



NOT USED



ANALOGUE INPUT SIGNAL FOR FOLOMATIC

Iss	Date	Chkd	Revision Details
1	050118	JJ	Add TS3/TS4 on the basis of WD R000-100
2	290719	JJ	TS3 / TS4 is connected to SK.43. Change SK.23 to SK.42

www.rotork.com

ROTORK CONTROLS LTD
BATH, BA1 3JQ
ENGLAND
Tel:01225-733200

ROTORK CONTROLS INC
ROCHESTER
NY 14624, USA
Tel:585-247-2304

ROMPAK 3PH FOLO/CPT+TORQUE SWITCHES

Drawn by: VYA
Date : 14-Apr-14
Base WD: R000-100
Job No : - -
MI No : - -

Circuit Diagram No	Issue No
R400-100	2