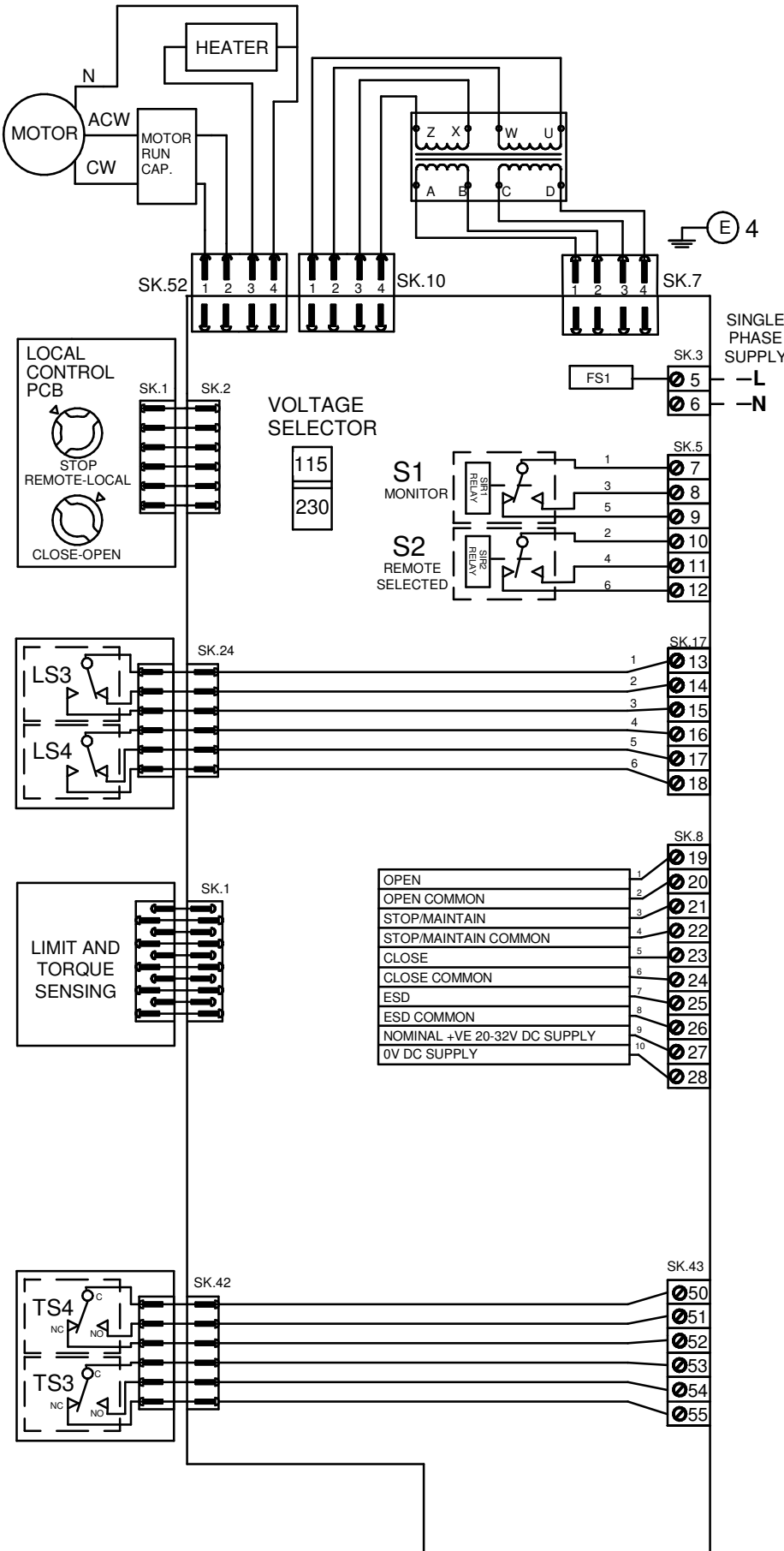


CIRCUIT DRAWN WITH  
POWER SUPPLY OFF



TRANSFORMER TAPPING

NOM 50/60HZ	50HZ	60HZ
110/120	92-135	92-135
220/230	176-242	176-242

FS1 - SEE ROMPAK PUB008-006 INSTALLATION AND MAINTENANCE MANUAL

NOTE

FOR TYPICAL REMOTE CONTROL INDICATING, MONITORING AND ALARM CIRCUITS SEE PUBLICATION DOC862

MAX EXTERNAL LOAD ON S1/S2 RELAYS TO BE 5A. MAX VOLTAGE 120V AC/DC

MAX EXTERNAL LOAD ON TERMINAL 27 & 28 TO BE 3W

CONTROL SIGNAL THRESHOLD VOLTAGES:

- MAX 60V DC
- TO BE MINIMUM 'ON' 14V DC AT 1mA
- MAXIMUM 'OFF' = 3V
- MINIMUM CONTROL SIGNAL DURATION TO BE 300mS.

CURRENT DRAWN FROM EACH REMOTE CONTROL SIGNAL IS 5mA ON 24V DC

LS3 / LS4  
MAXIMUM CURRENT 3A MAXIMUM VOLTAGE 120V AC/DC

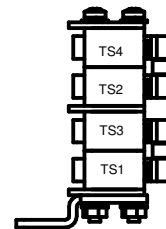
VOLTAGE SELECT SWITCH SW1, MUST BE CONFIGURED CORRECTLY BEFORE APPLYING POWER.

ACTUATOR CONFIGURATION VIA DIL SWITCH SW2

ROM1 AND ROMA DO NOT SUPPORT TORQUE LIMIT

REFER TO INSTALLATION INSTRUCTIONS FOR DIL SWITCH SELECTION

TS3 / TS4  
MAXIMUM CURRENT 10A MAXIMUM VOLTAGE 250V AC  
VOLTAGE APPLIED FOR TS3 / TS4 MUST BE SAME



Iss	Date	Chkd	Revision Details
1	050118	JJ	Add TS3/TS4 on the basis of WD R001-000
2	290719	JJ	TS3 / TS4 is connected to SK.43, Change SK.23 to SK.42

[www.rotork.com](http://www.rotork.com)

ROTORK CONTROLS LTD  
BATH, BA1 3JQ  
ENGLAND  
Tel:01225-733200

ROTORK CONTROLS INC  
ROCHESTER  
NY 14624, USA  
Tel:585-247-2304

ROMPAK 1PH BASIC+TORQUE SWITCHES

Drawn by: VYA  
Date : 25-Apr-14  
Base WD: R001-000  
Job No : --  
MI No : --

Circuit Diagram No	Issue No
R401-000	2