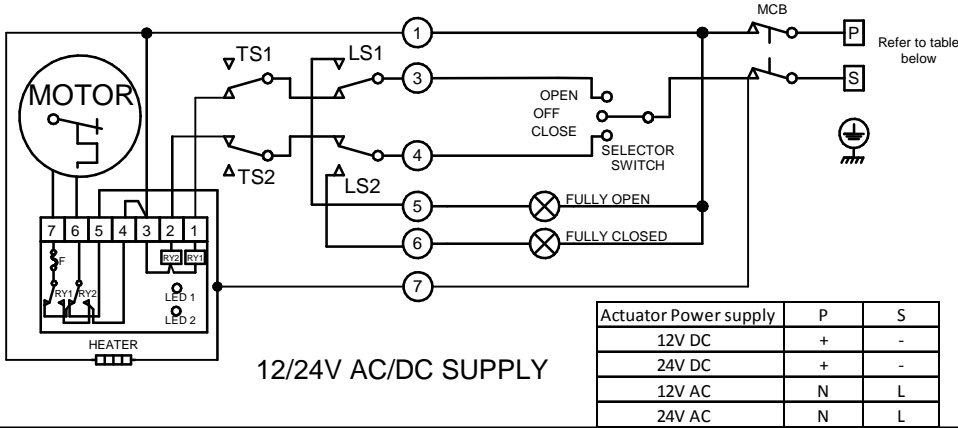


CIRCUIT IS DRAWN FOR A VALVE IN THE MID-TRAVEL

ACTUATOR SHOWN IN MID-TRAVEL

TYPICAL CONTROL - NOT ROTORK SUPPLY



12/24V AC/DC SUPPLY

- O - OPEN
- C - CLOSE
- TS - TORQUE SWITCHES
- LS - LIMIT SWITCHES
- TS3 AND TS4 ARE USED FOR TORQUE FEEDBACK SIGNAL
- TS3/TS4 WILL BE TRIGGERED BEFORE TS1/TS2

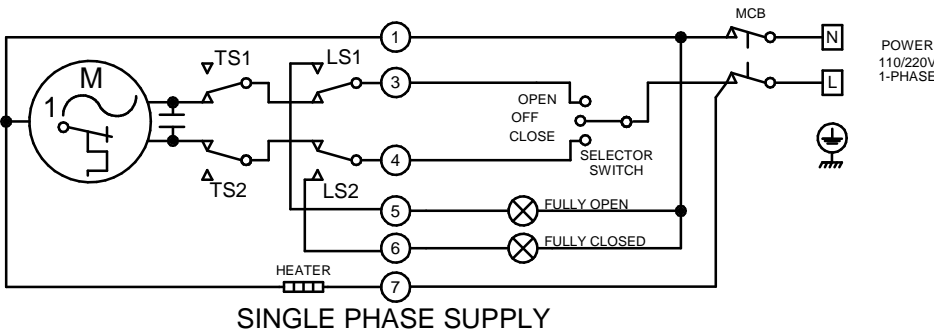
MCB - MINITURE CIRCUIT BREAKER

○ ACTUATOR TERMINAL

CAUTION
SOLID STATE LOGIC SYSTEMS USING ACTUATOR SWITCH SIGNAL INPUTS MUST BE DESIGNED TO PROVIDE A SWITCHING LOAD OF 1 WATT & 24V MINIMUM WITH A TIME CONSTANT NOT LESS THAN 10ms TO MINIMISE SENSITIVITY TO CONTACT VIBRATION.

ACTUATOR SHOWN IN MID-TRAVEL

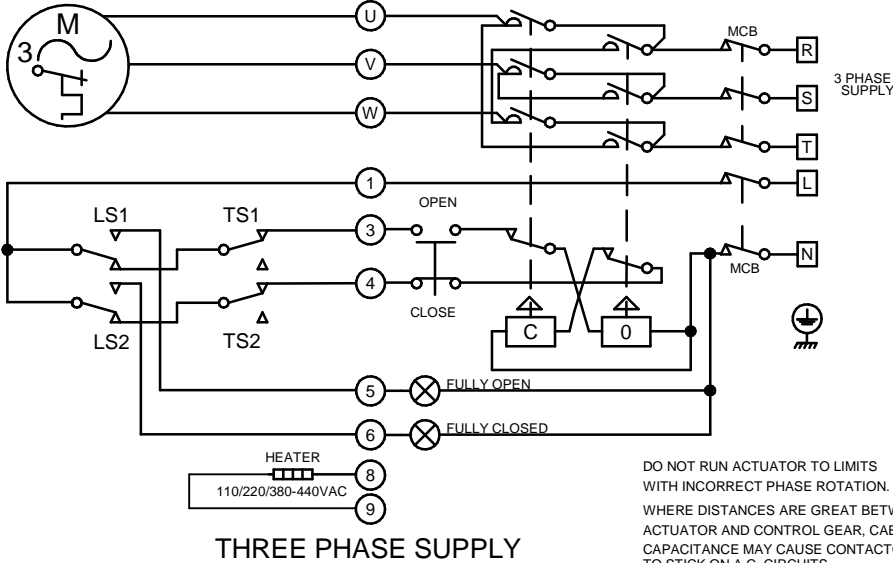
TYPICAL CONTROL - NOT ROTORK SUPPLY



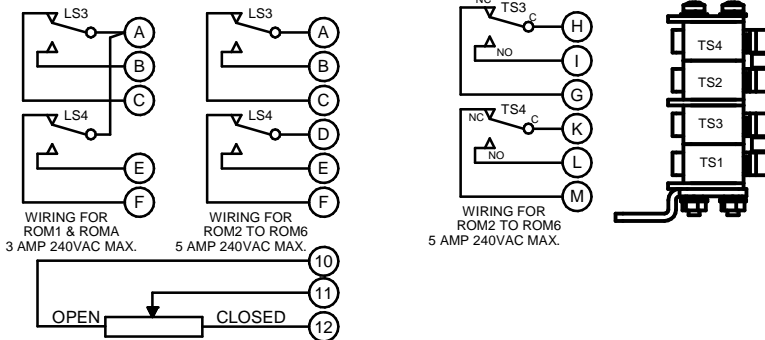
SINGLE PHASE SUPPLY

ACTUATOR SHOWN IN MID-TRAVEL

TYPICAL CONTROL - NOT ROTORK SUPPLY



THREE PHASE SUPPLY



Iss	Date	Chkd	Revision Details
1	211217 VYA	JJ	Add TS3/TS4 on the basis of WD YS33-00

www.rotork.com

ROTORK CONTROLS LTD
BATH, BA1 3JQ
ENGLAND
Tel:01225-733200

ROTORK CONTROLS INC
ROCHESTER
NY 14624, USA
Tel:585-247-2304

BASIC + HEATER + TS1/TS2 + LS3/LS4
+ POT+TS3/TS4

Drawn by: PJW
Date : 170402
Base WD: --
Job No : --
MI No : --

Circuit Diagram No
YS53-00
Issue No
1