

A	INITIAL RELEASE	ECE
REV	DESCRIPTION	DATE
		12APR18

NOTES:
 1. 4-20 mA OUTPUT, 24VDC NOMINAL, (18-30 VDC MAX)
 2. SEE ADDITIONAL PAGES FOR COMMUNICATIONS WD IF ATTACHED

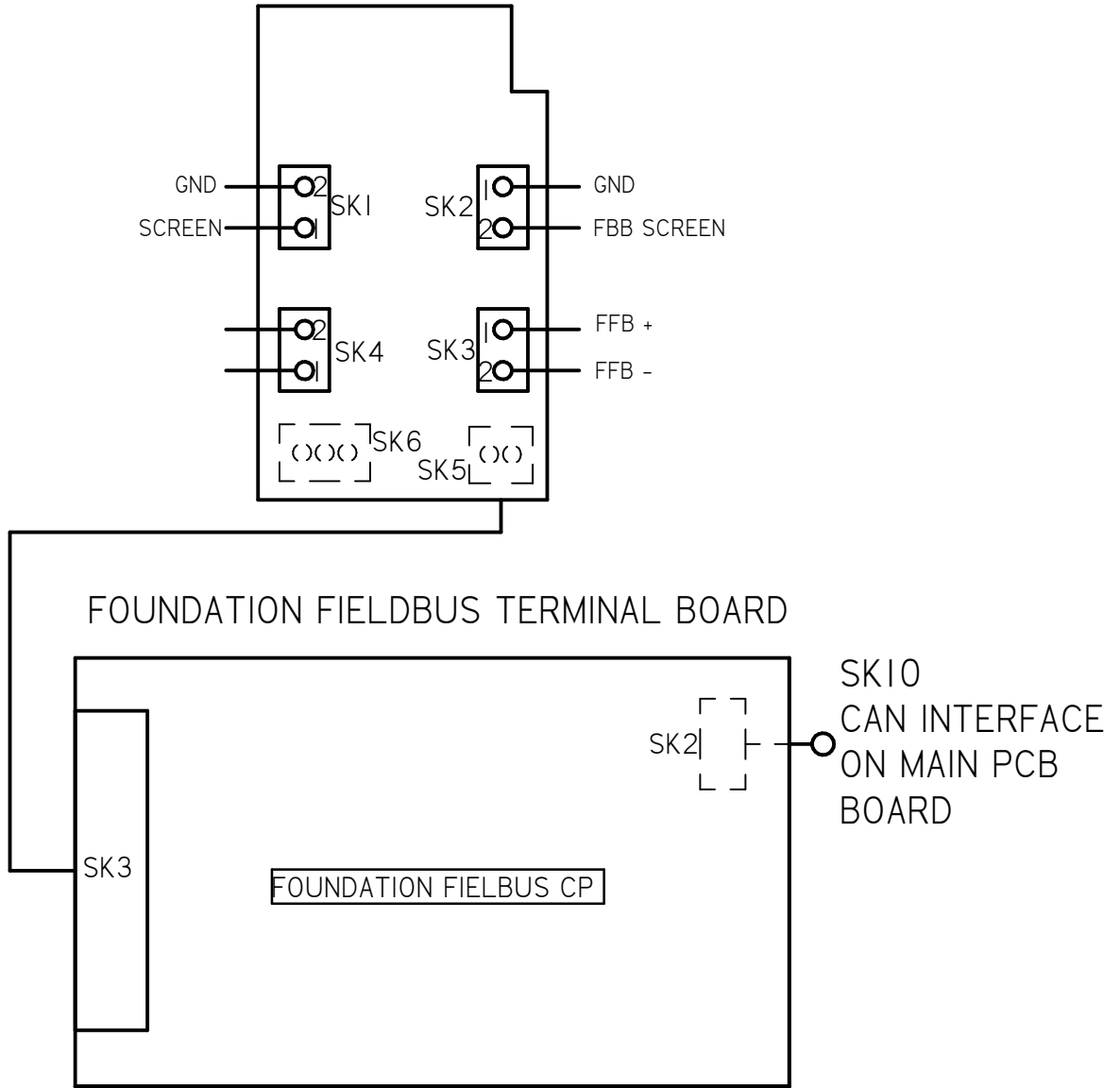
TOLERANCES UNLESS OTHERWISE SPECIFIED .XX = ±.02 XXX = ±.005 ANGULAR ±1°		
SCALE: NTS		
DRAWN: ECE	PROD. DV.	PROD. ENG.
DATE: 12APR18	DATE:	DATE:

rotork
Controls

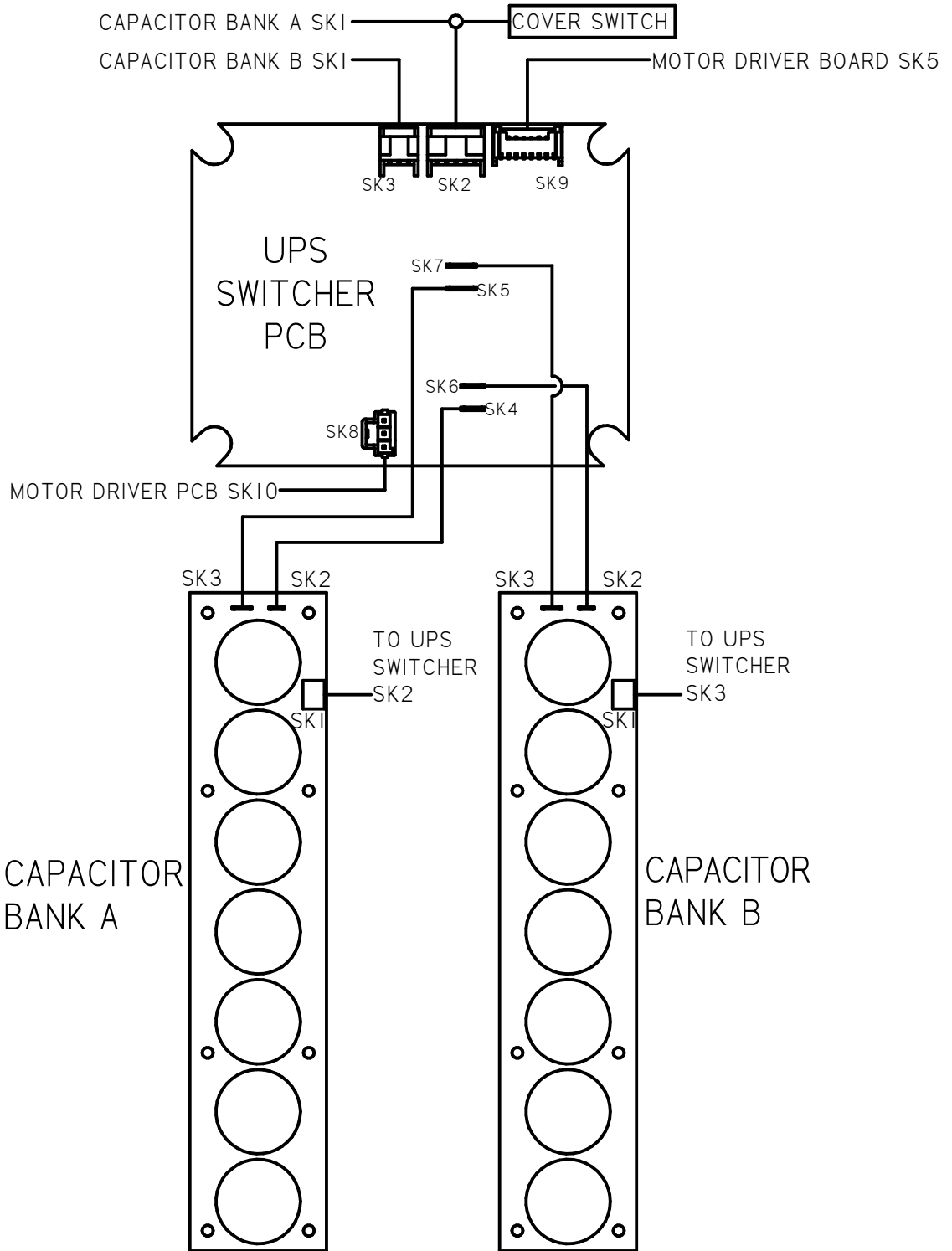
MILWAUKEE, WISCONSIN, USA

This print is the property of Rotork Process Controls and is loaned in confidence subject to return. All rights to design or invention are reserved.

TITLE : CMA 1500 & 3000 WIRING DIAGRAM	
FOR : AC POWER OPERATION LOCAL CONTROLS, FOUNDATION FIELDBUS, UPS	
SHT 1 OF 3	M32-FS



A	INITIAL RELEASE	ECE 12APR18	NOTES: 1. 4-20 mA OUTPUT, 24VDC NOMINAL, (18-30 VDC MAX) 2. SEE ADDITIONAL PAGES FOR COMMUNICATIONS WD IF ATTACHED	
REV	DESCRIPTION	DATE		
TOLERANCES UNLESS OTHERWISE SPECIFIED .XX = ±.02 XXX = ±.005 ANGULAR ±1°			rotork Controls MILWAUKEE, WISCONSIN, USA	
SCALE: NTS				TITLE : CMA 1500 & 3000 WIRING DIAGRAM
DRAWN: ECE	PROD. DV.	PROD. ENG.		FOR : AC POWER OPERATION LOCAL CONTROLS, FOUNDATION FIELDBUS, UPS
DATE: 12APR18	DATE:	DATE:	This print is the property of Rotork Process Controls and is loaned in confidence subject to return. All rights to design or invention are reserved.	
		SHT 2 OF 3	M32-FS	



A	INITIAL RELEASE	ECE 12APR18
REV	DESCRIPTION	DATE

NOTES:
 1. 4-20 mA OUTPUT, 24VDC NOMINAL, (18-30 VDC MAX)
 2. SEE ADDITIONAL PAGES FOR COMMUNICATIONS W/IF ATTACHED

TOLERANCES UNLESS OTHERWISE SPECIFIED .XX = ±.02 XXX = ±.005 ANGULAR ±1°		
SCALE: NTS		
DRAWN: ECE	PROD. DV.	PROD. ENG.
DATE: 12APR18	DATE:	DATE:


MILWAUKEE, WISCONSIN, USA

This print is the property of Rotork Process Controls and is loaned in confidence subject to return. All rights to design or invention are reserved.

TITLE : CMA 1500 & 3000 WIRING DIAGRAM	
FOR : AC POWER OPERATION LOCAL CONTROLS, FOUNDATION FIELDBUS, UPS	
SHT 3 OF 3	M32-FS