

A	INITIAL RELEASE	ECE 12APR18
REV	DESCRIPTION	DATE

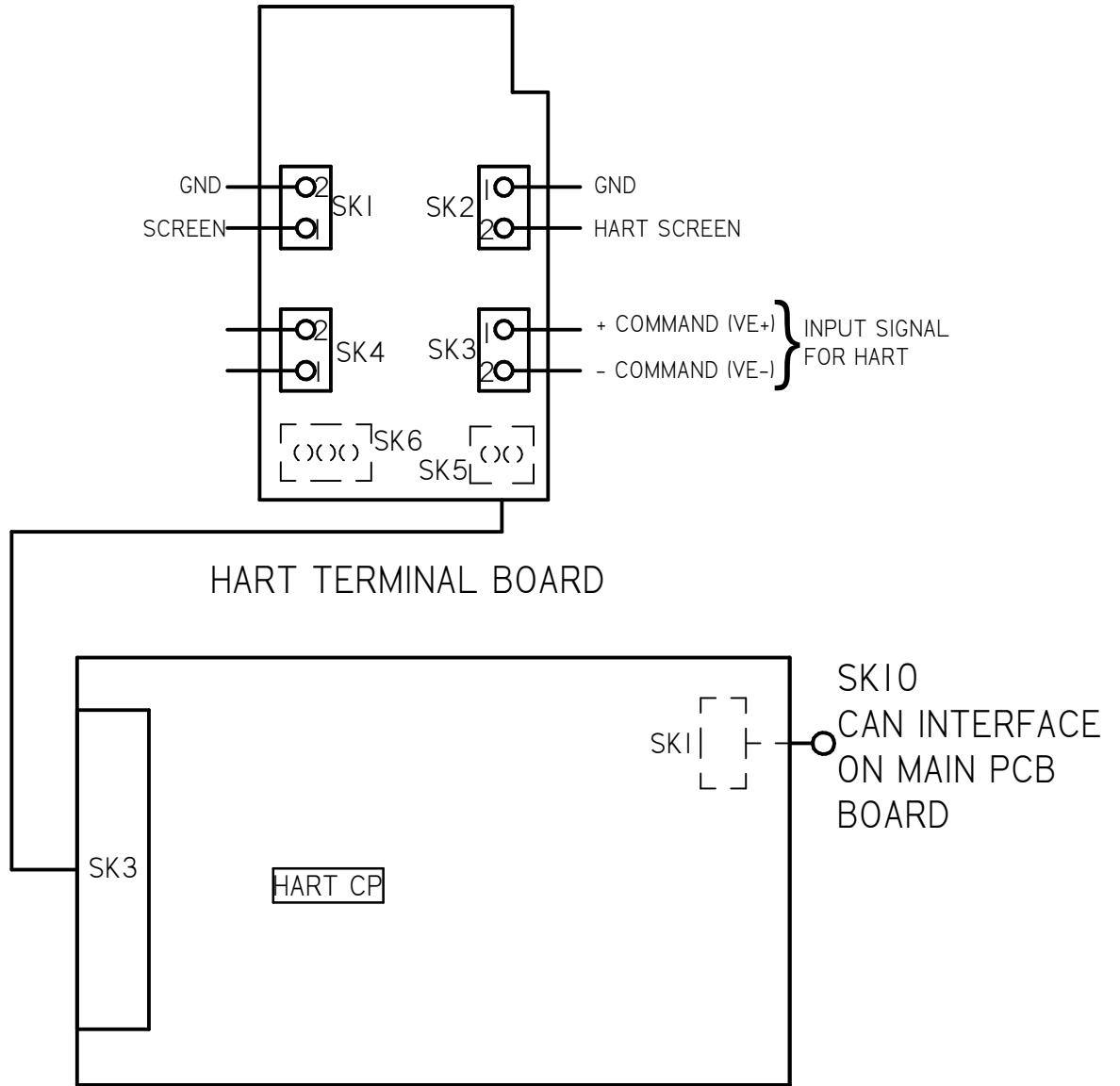
NOTES:
 1. 4-20 mA OUTPUT, 24VDC NOMINAL, (18-30 VDC MAX)
 2. SEE ADDITIONAL PAGES FOR COMMUNICATIONS WD IF ATTACHED

TOLERANCES UNLESS OTHERWISE SPECIFIED .XX = ±.02 XXX = ±.005 ANGULAR ±1°		
SCALE: NTS		
DRAWN: ECE	PROD. DV.	PROD. ENG.
DATE: 12APR18	DATE:	DATE:

rotork[®]
Controls
 MILWAUKEE, WISCONSIN, USA

This print is the property of Rotork Process Controls and is loaned in confidence subject to return. All rights to design or invention are reserved.

TITLE : CMA 1500 & 3000 WIRING DIAGRAM	
FOR :AC POWER OPERATION LOCAL CONTROLS, UPS HART TERMINAL CONNECTIONS	
SHT 1 OF 3	M32-HS



A	INITIAL RELEASE	ECE 12APR18
REV	DESCRIPTION	DATE

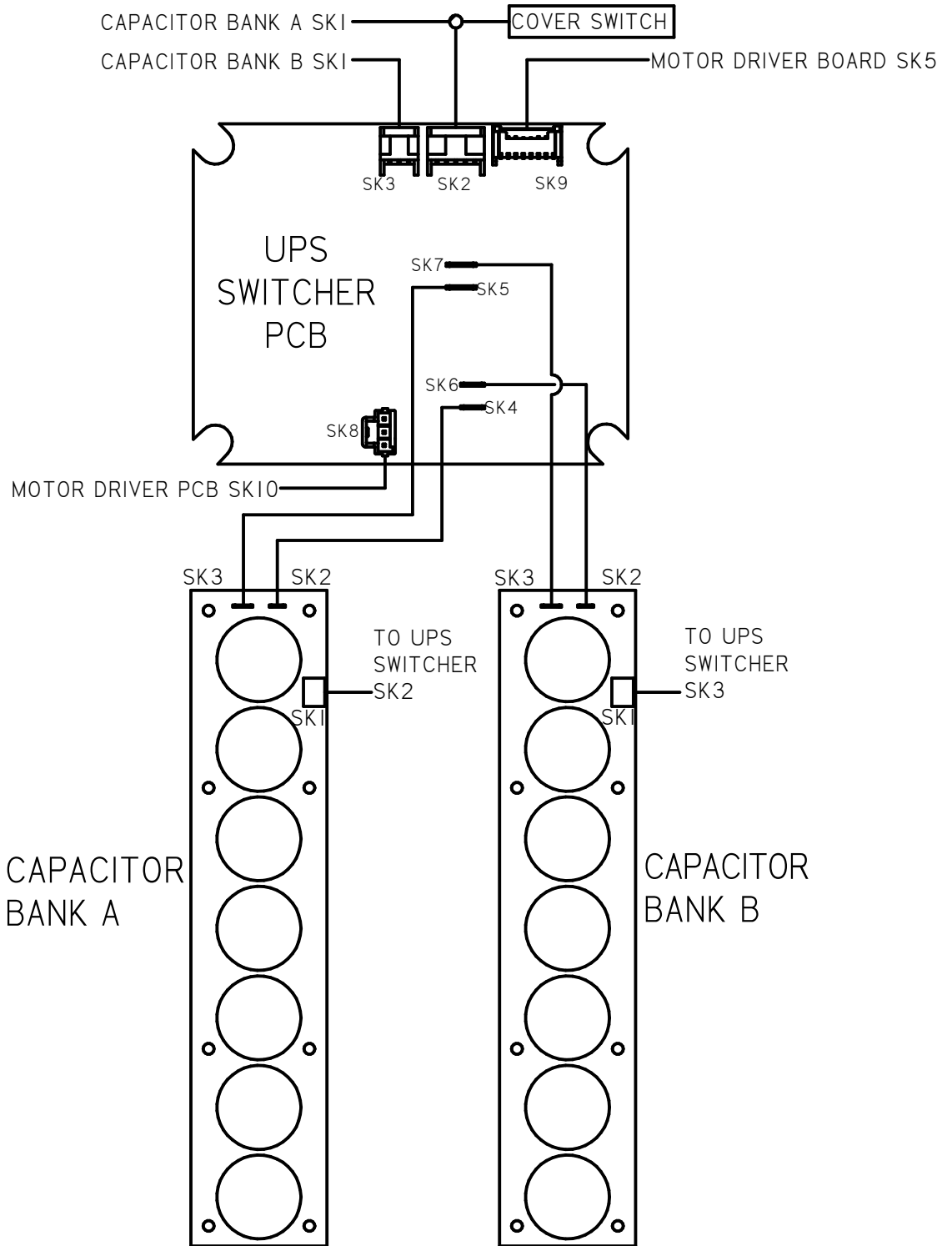
NOTES:
 1. 4-20 mA OUTPUT, 24VDC NOMINAL, (18-30 VDC MAX)
 2. SEE ADDITIONAL PAGES FOR COMMUNICATIONS WD IF ATTACHED


TOLERANCES UNLESS OTHERWISE SPECIFIED .XX = ±.02 XXX = ±.005 ANGULAR ±1°		
SCALE: NTS		
DRAWN: ECE	PROD. DV.	PROD. ENG.
DATE: 12APR18	DATE:	DATE:


 MILWAUKEE, WISCONSIN, USA

This print is the property of Rotork Process Controls and is loaned in confidence subject to return. All rights to design or invention are reserved.

TITLE : CMA 1500 & 3000 WIRING DIAGRAM	
FOR : AC POWER OPERATION LOCAL CONTROLS, UPS HART TERMINAL CONNECTIONS	
SHT 2 OF 3	M32-HS



A	INITIAL RELEASE	ECE 12APR18
REV	DESCRIPTION	DATE
TOLERANCES UNLESS OTHERWISE SPECIFIED .XX = ±.02 XXX = ±.005 ANGULAR ±1°		
SCALE: NTS		
DRAWN: ECE	PROD. DV.	PROD. ENG.
DATE: 12APR18	DATE:	DATE:
 MILWAUKEE, WISCONSIN, USA		TITLE : CMA 1500 & 3000 WIRING DIAGRAM
This print is the property of Rotork Process Controls and is loaned in confidence subject to return. All rights to design or invention are reserved.		FOR :AC POWER OPERATION LOCAL CONTROLS, UPS HART TERMINAL CONNECTIONS
		SHT 3 OF 3
		M32-HS