

A	INITIAL RELEASE	ECE 12APR18
REV	DESCRIPTION	DATE

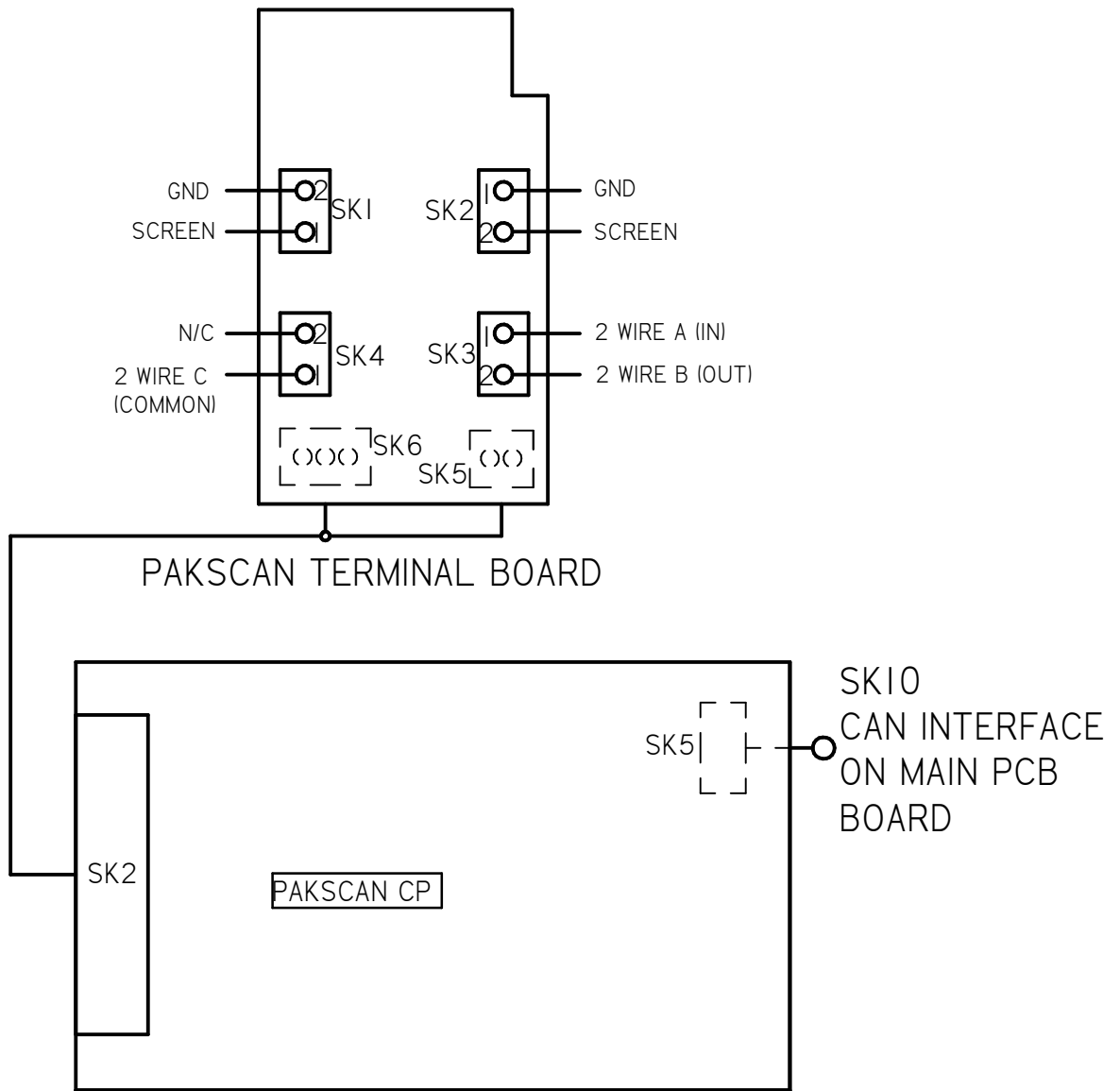
NOTES:
 1. 4-20 mA OUTPUT, 24VDC NOMINAL, (18-30 VDC MAX)
 2. SEE ADDITIONAL PAGES FOR COMMUNICATIONS WD IF ATTACHED


TOLERANCES UNLESS OTHERWISE SPECIFIED .XX = ±.02 XXX = ±.005 ANGULAR ±1°		
SCALE: NTS		
DRAWN: ECE	PROD. DV.	PROD. ENG.
DATE: 12APR18	DATE:	DATE:

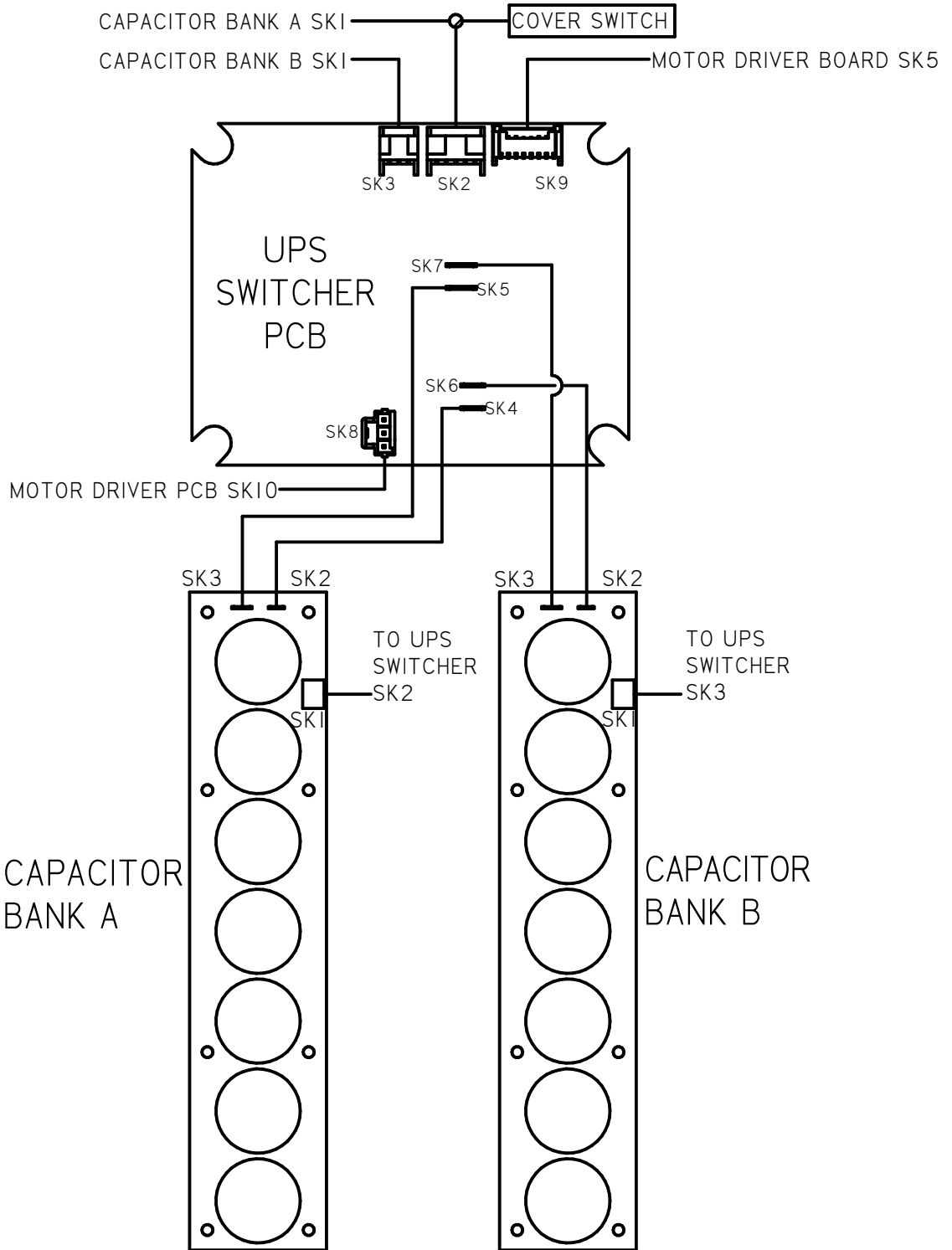
rotork[®]
Controls
MILWAUKEE, WISCONSIN, USA


This print is the property of Rotork Process Controls and is loaned in confidence subject to return. All rights to design or invention are reserved.

TITLE : CMA 1500 & 3000 WIRING DIAGRAM	
FOR : AC POWER OPERATION LOCAL CONTROLS, PAKSCAN, UPS	
SHT 1 OF 3	M32-KS



A	INITIAL RELEASE		ECE	12APR18	
REV	DESCRIPTION		DATE	NOTES: 1. 4-20 mA OUTPUT, 24VDC NOMINAL, (18-30 VDC MAX) 2. SEE ADDITIONAL PAGES FOR COMMUNICATIONS WD IF ATTACHED	
TOLERANCES UNLESS OTHERWISE SPECIFIED .XX = ±.02 XXX = ±.005 ANGULAR ±1°			 MILWAUKEE, WISCONSIN, USA		TITLE : CMA 1500 & 3000 WIRING DIAGRAM
SCALE: NTS					FOR : AC POWER OPERATION LOCAL CONTROLS, PAKSCAN, UPS
DRAWN:	PROD. DV.	PROD. ENG.	This print is the property of Rotork Process Controls and is loaned in confidence subject to return. All rights to design or invention are reserved.		
ECE					
DATE:	DATE:	DATE:	SHT	M32-KS	
12APR18			2 OF 3		



A	INITIAL RELEASE	ECE	12APR18	NOTES:	
REV	DESCRIPTION	DATE		1. 4-20 mA OUTPUT, 24VDC NOMINAL, (18-30 VDC MAX)	
				2. SEE ADDITIONAL PAGES FOR COMMUNICATIONS WD IF ATTACHED	
TOLERANCES UNLESS OTHERWISE SPECIFIED .XX = ±.02 XXX = ±.005 ANGULAR ±1°			 MILWAUKEE, WISCONSIN, USA		TITLE : CMA 1500 & 3000 WIRING DIAGRAM
SCALE: NTS					FOR : AC POWER OPERATION LOCAL CONTROLS, PAKSCAN, UPS
DRAWN:	PROD. DV.	PROD. ENG.	This print is the property of Rotork Process Controls and is loaned in confidence subject to return. All rights to design or invention are reserved.		SHT 3 OF 3
ECE					M32-KS
DATE:	DATE:	DATE:	12APR18		