

**CUSTOMER CONNECTIONS**

- SK12 — COM RELAY 2
- SK11 — NC CLOSED
- SK10 — NO LIMIT
- SK9 — COM RELAY 1
- SK8 — NC OPEN
- SK7 — NO LIMIT
- SK6 — (-VE) CPT
- SK5 — (+VE) CPT
- SK4 — (-) COMMAND
- SK3 — (+) COMMAND

- SK2 — NEUTRAL
- SK1 — LI POWER

NOTES:  
 1. 4-20 mA OUTPUT, 24VDC NOMINAL, (18-30 VDC MAX)  
 2. SEE ADDITIONAL PAGES FOR COMMUNICATIONS WD IF ATTACHED

A	INITIAL RELEASE	ECE
REV	DESCRIPTION	DATE
		12APR18

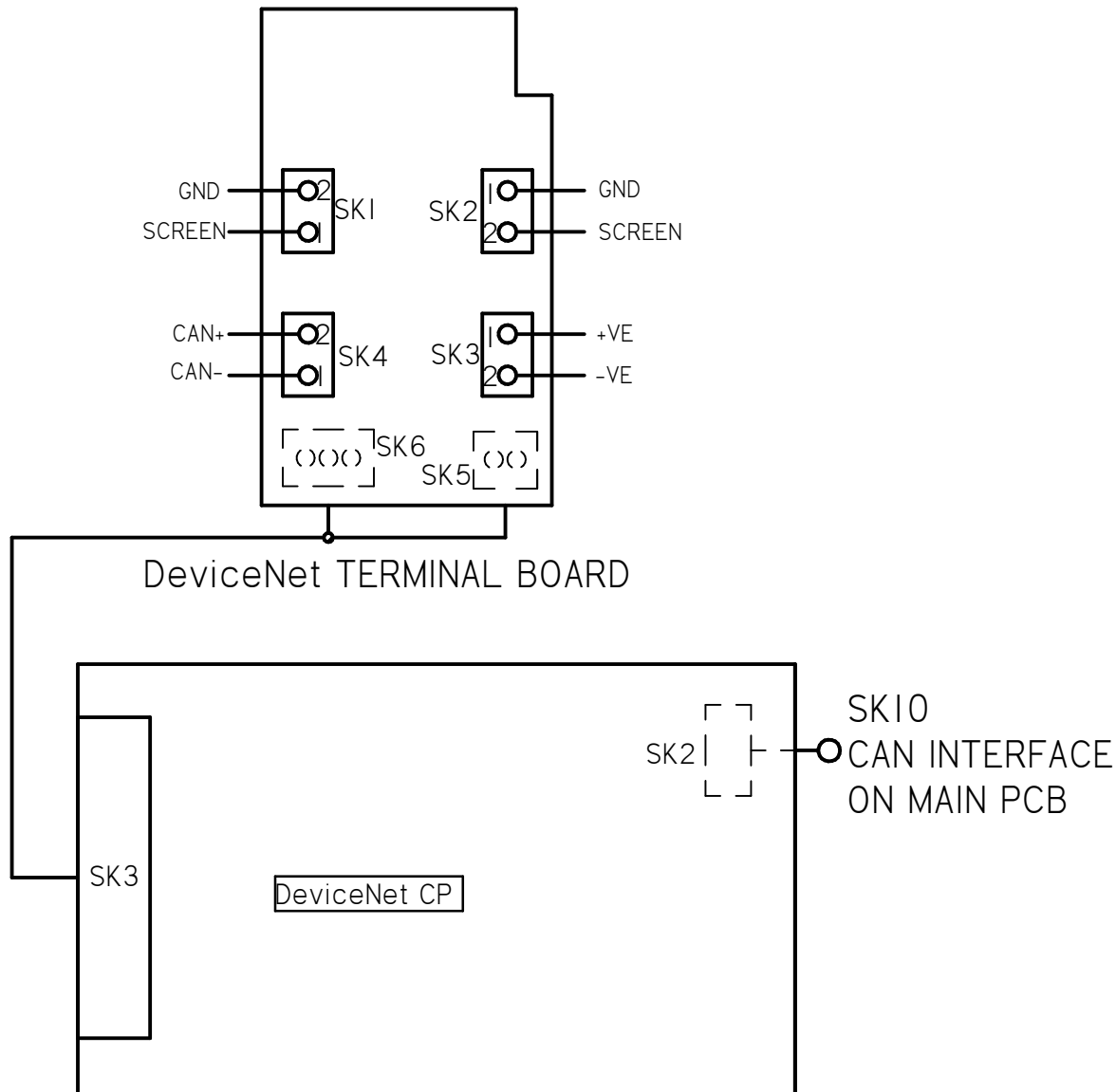
<b>TOLERANCES</b> UNLESS OTHERWISE SPECIFIED .XX = ±.02    XXX = ±.005    ANGULAR ±1°		
SCALE: NTS		
DRAWN: ECE	PROD. DV.	PROD. ENG.
DATE: 12APR18	DATE:	DATE:

**rotork**<sup>®</sup>  
Controls

MILWAUKEE, WISCONSIN, USA

This print is the property of Rotork Process Controls and is loaned in confidence subject to return. All rights to design or invention are reserved.

TITLE : <b>CMA 1500 &amp; 3000 WIRING DIAGRAM</b>	
FOR : AC POWER OPERATION LOCAL CONTROLS, DEVICE NET, UPS	
SHT 1 OF 3	<b>M32-NS</b>



A	INITIAL RELEASE	ECE 12APR18
REV	DESCRIPTION	DATE

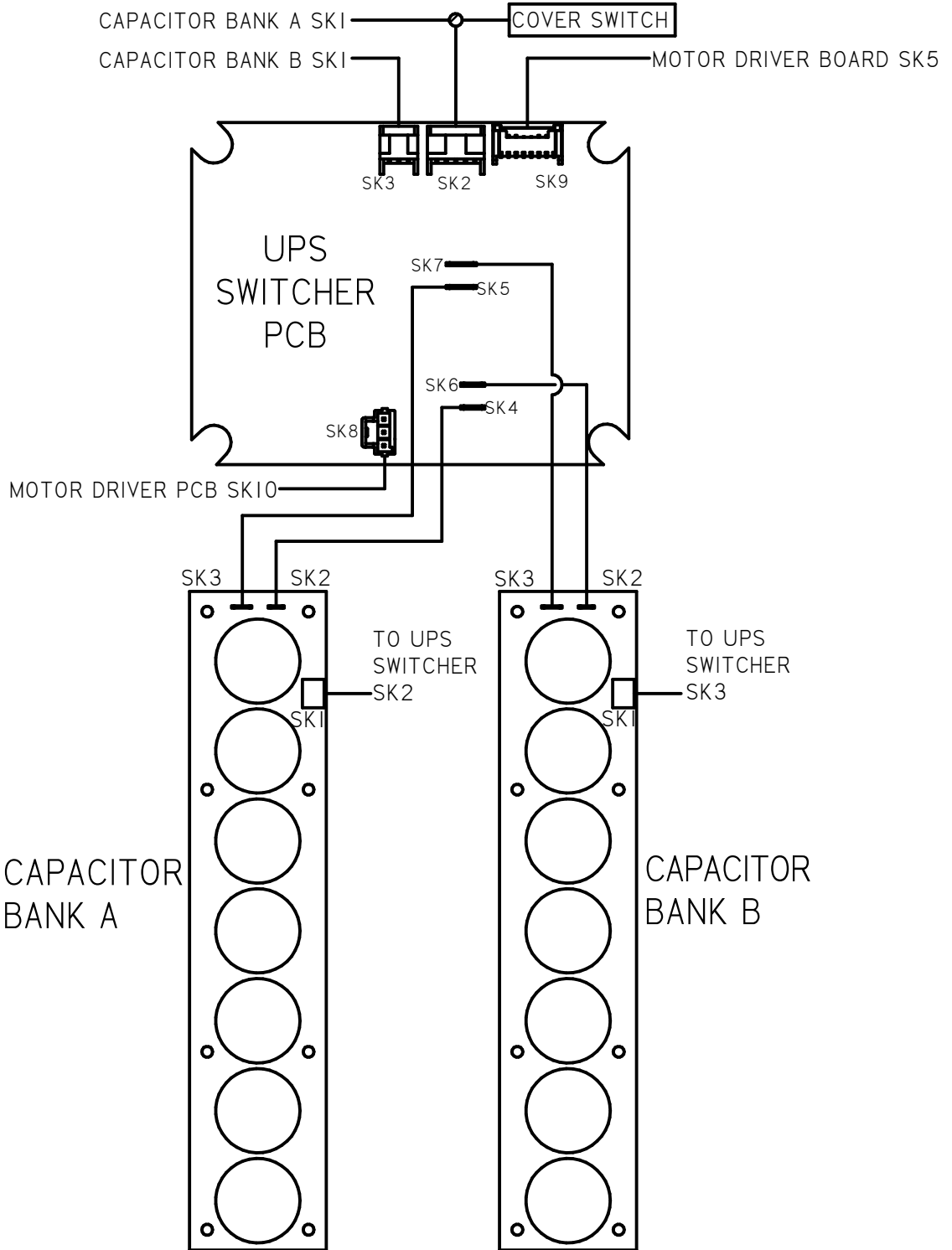
NOTES:  
 1. 4-20 mA OUTPUT, 24VDC NOMINAL, (18-30 VDC MAX)  
 2. SEE ADDITIONAL PAGES FOR COMMUNICATIONS WD IF ATTACHED

<b>TOLERANCES</b> UNLESS OTHERWISE SPECIFIED .XX = ±.02    XXX = ±.005    ANGULAR ±1°		
SCALE: <b>NTS</b>		
DRAWN: <b>ECE</b>	PROD. DV.	PROD. ENG.
DATE: <b>12APR18</b>	DATE:	DATE:

  
**rotork**  
**Controls**  
 MILWAUKEE, WISCONSIN, USA

This print is the property of Rotork Process Controls and is loaned in confidence subject to return. All rights to design or invention are reserved.

TITLE : <b>CMA 1500 &amp; 3000 WIRING DIAGRAM</b>	
FOR : <b>AC POWER OPERATION LOCAL CONTROLS, DEVICE NET, UPS</b>	
SHT 2 OF 3	<b>M32-NS</b>



A	INITIAL RELEASE	ECE 12APR18
REV	DESCRIPTION	DATE

NOTES:  
 1. 4-20 mA OUTPUT, 24VDC NOMINAL, (18-30 VDC MAX)  
 2. SEE ADDITIONAL PAGES FOR COMMUNICATIONS WD IF ATTACHED

<b>TOLERANCES</b> UNLESS OTHERWISE SPECIFIED .XX = ±.02    XXX = ±.005    ANGULAR ±1°		
SCALE: <b>NTS</b>		
DRAWN: <b>ECE</b>	PROD. DV.	PROD. ENG.
DATE: <b>12APR18</b>	DATE:	DATE:

  
**MILWAUKEE, WISCONSIN, USA**

This print is the property of Rotork Process Controls and is loaned in confidence subject to return. All rights to design or invention are reserved.

TITLE : <b>CMA 1500 &amp; 3000          WIRING DIAGRAM</b>	
FOR : <b>AC POWER OPERATION          LOCAL CONTROLS, DEVICE NET, UPS</b>	
SHT 3 OF 3	<b>M32-NS</b>