

CUSTOMER CONNECTIONS

- SK12 — COM RELAY 2
- SK11 — NC CLOSED
- SK10 — NO LIMIT
- SK9 — COM RELAY 1
- SK8 — NC OPEN
- SK7 — NO LIMIT
- SK6 — (-VE) CPT
- SK5 — (+VE) CPT
- SK4 — (-) COMMAND
- SK3 — (+) COMMAND

- SK2 — NEUTRAL
- SK1 — LI POWER



A	INITIAL RELEASE	ECE
REV	DESCRIPTION	DATE
		12APR18

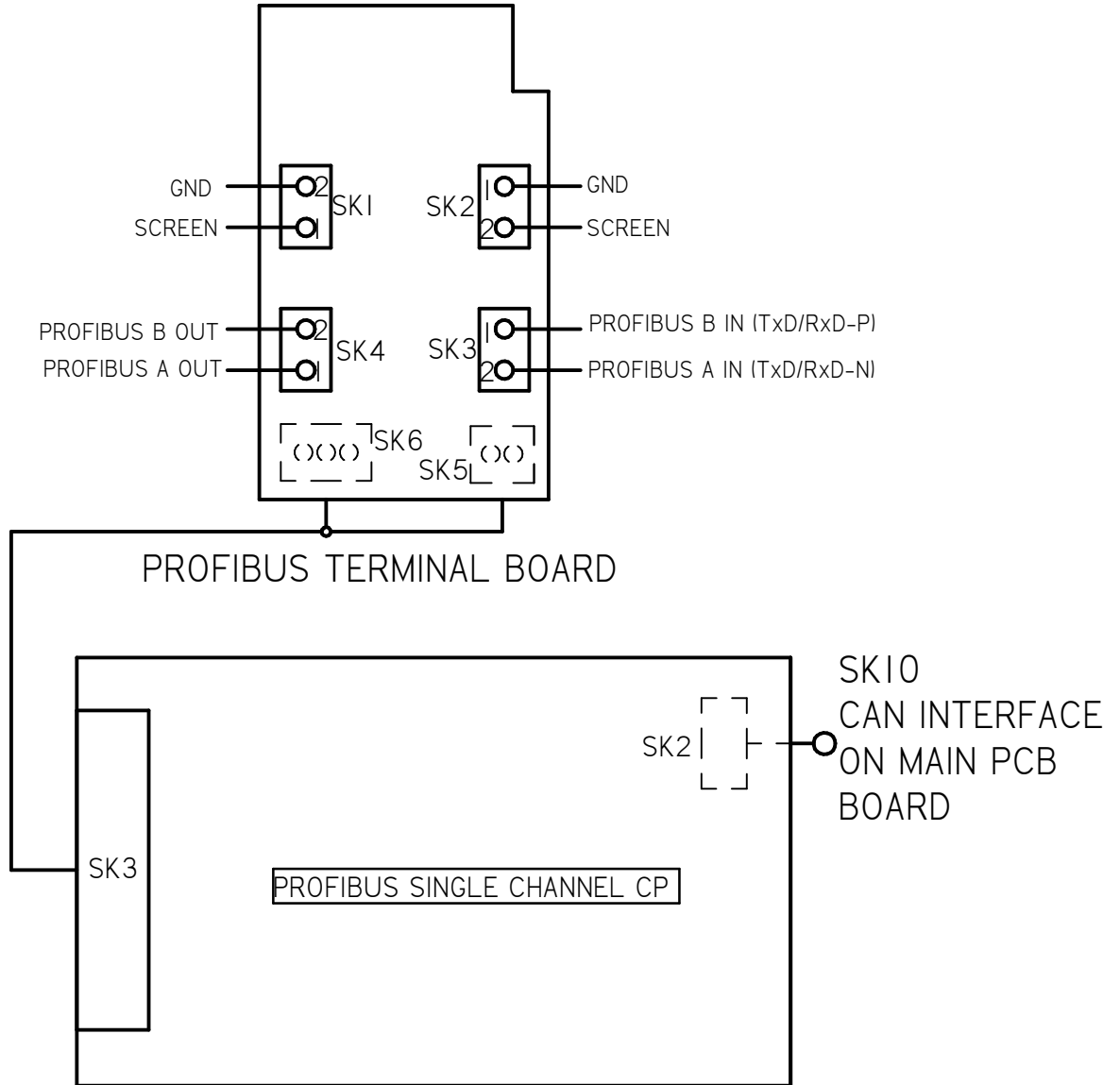
NOTES:
 1. 4-20 mA OUTPUT, 24VDC NOMINAL, (18-30 VDC MAX)
 2. SEE ADDITIONAL PAGES FOR COMMUNICATIONS WD IF ATTACHED


TOLERANCES UNLESS OTHERWISE SPECIFIED .XX = ±.02 XXX = ±.005 ANGULAR ±1°		
SCALE: NTS		
DRAWN: ECE	PROD. DV.	PROD. ENG.
DATE: 12APR18	DATE:	DATE:

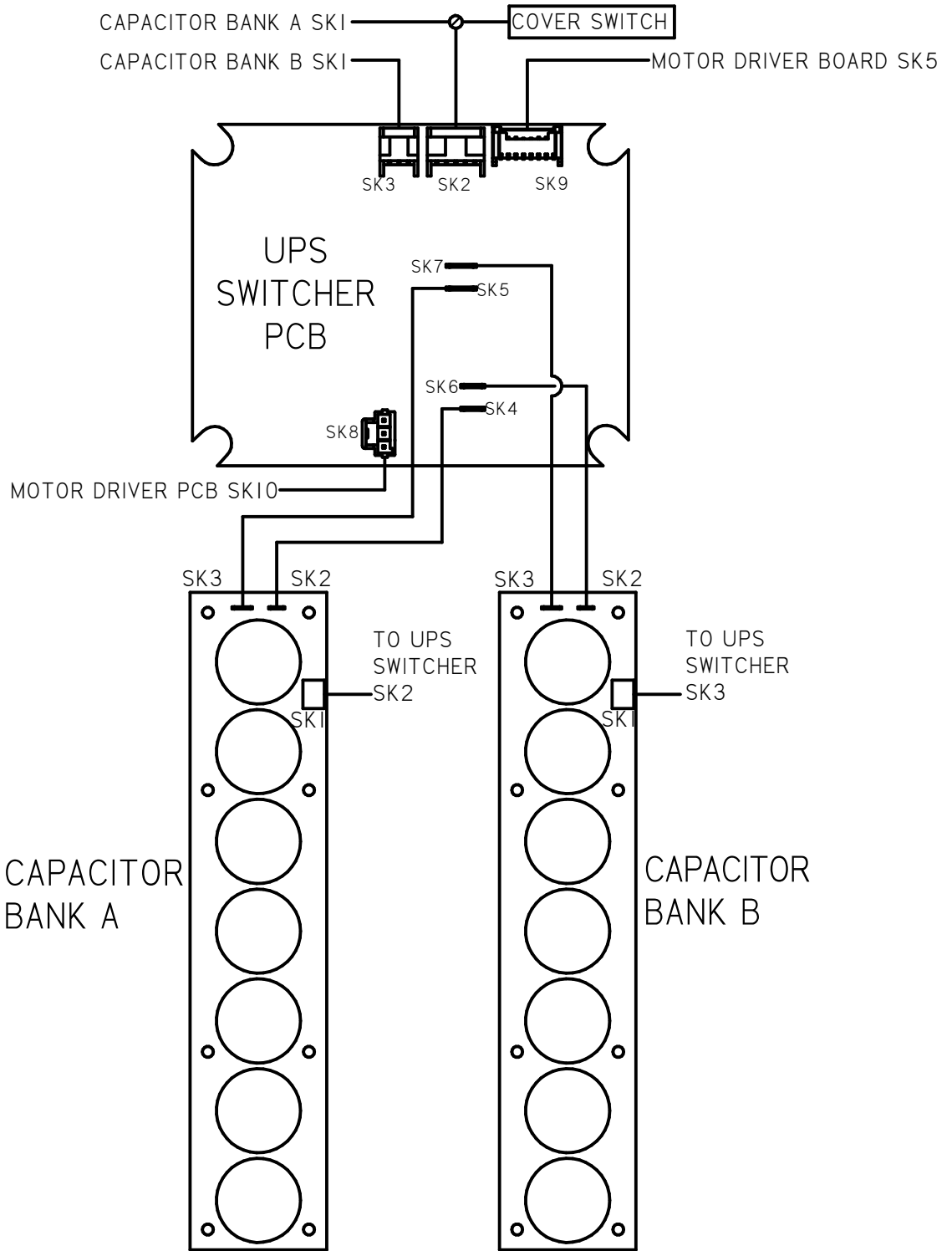
rotork
Controls
MILWAUKEE, WISCONSIN, USA


This print is the property of Rotork Process Controls and is loaned in confidence subject to return. All rights to design or invention are reserved.

TITLE : CMA 1500 & 3000 WIRING DIAGRAM	
FOR : AC POWER OPERATION LOCAL CONTROLS, PROFIBUS, UPS	
SHT 1 OF 3	M32-PS



A	INITIAL RELEASE		ECE	12APR18	
REV	DESCRIPTION		DATE	NOTES: 1. 4-20 mA OUTPUT, 24VDC NOMINAL, (18-30 VDC MAX) 2. SEE ADDITIONAL PAGES FOR COMMUNICATIONS WD IF ATTACHED	
TOLERANCES UNLESS OTHERWISE SPECIFIED .XX = ±.02 XXX = ±.005 ANGULAR ±1°			 MILWAUKEE, WISCONSIN, USA		TITLE : CMA 1500 & 3000 WIRING DIAGRAM
SCALE: NTS					FOR : AC POWER OPERATION LOCAL CONTROLS, PROFIBUS, UPS
DRAWN:	PROD. DV.	PROD. ENG.	This print is the property of Rotork Process Controls and is loaned in confidence subject to return. All rights to design or invention are reserved.		SHT
ECE					2 OF 3
DATE:	DATE:	DATE:	M32-PS		
12APR18					



A	INITIAL RELEASE		ECE	NOTES:	
REV	DESCRIPTION		12APR18	1. 4-20 mA OUTPUT, 24VDC NOMINAL, (18-30 VDC MAX)	
			DATE	2. SEE ADDITIONAL PAGES FOR COMMUNICATIONS WD IF ATTACHED	
TOLERANCES UNLESS OTHERWISE SPECIFIED .XX = ±.02 XXX = ±.005 ANGULAR ±1°			 MILWAUKEE, WISCONSIN, USA	TITLE : CMA 1500 & 3000 WIRING DIAGRAM	
SCALE: NTS				FOR : AC POWER OPERATION LOCAL CONTROLS, PROFIBUS, UPS	
DRAWN: ECE	PROD. DV.	PROD. ENG.		This print is the property of Rotork Process Controls and is loaned in confidence subject to return. All rights to design or invention are reserved.	
DATE: 12APR18	DATE:	DATE:	SHT 3 OF 3	M32-PS	