

A	INITIAL RELEASE	ECE 12APR18
REV	DESCRIPTION	DATE

NOTES:  
 1. 4-20 mA OUTPUT, 24VDC NOMINAL, (18-30 VDC MAXI)  
 2. SEE ADDITIONAL PAGES FOR COMMUNICATIONS WD IF ATTACHED

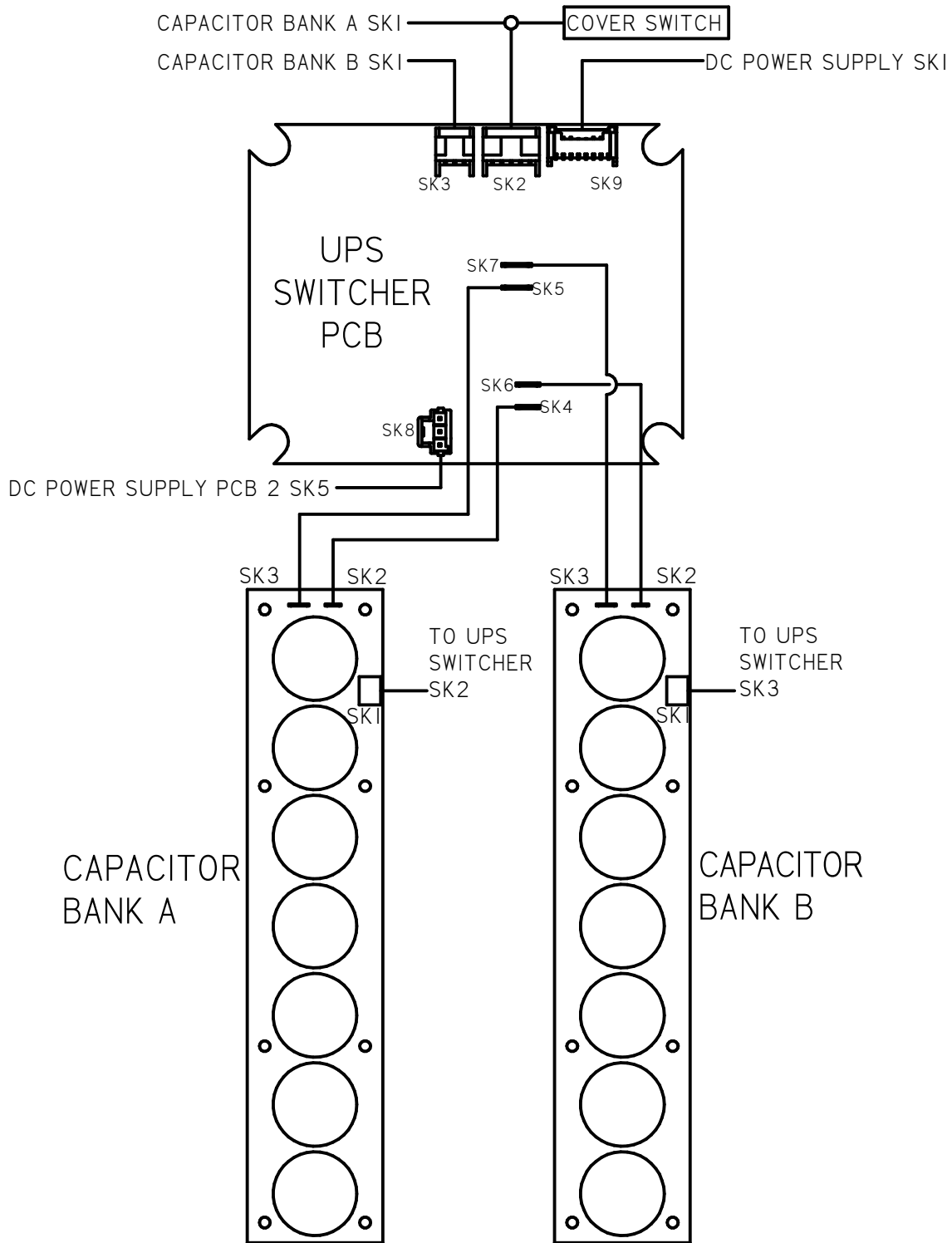
<b>TOLERANCES</b> UNLESS OTHERWISE SPECIFIED .XX = ±.02    XXX = ±.005    ANGULAR ±1°		
SCALE: NTS		
DRAWN: ECE	PROD. DV.	PROD. ENG.
DATE: 12APR18	DATE:	DATE:

**rotork**<sup>®</sup>  
Controls

MILWAUKEE, WISCONSIN, USA

This print is the property of Rotork Process Controls and is loaned in confidence subject to return. All rights to design or invention are reserved.

TITLE : <b>CMA 1500 &amp; 3000 WIRING DIAGRAM</b>	
FOR : 24V DC POWER OPERATION LOCAL CONTROLS, UPS, PAKSCAN	
SHT 1 OF 3	<b>M42-KS</b>



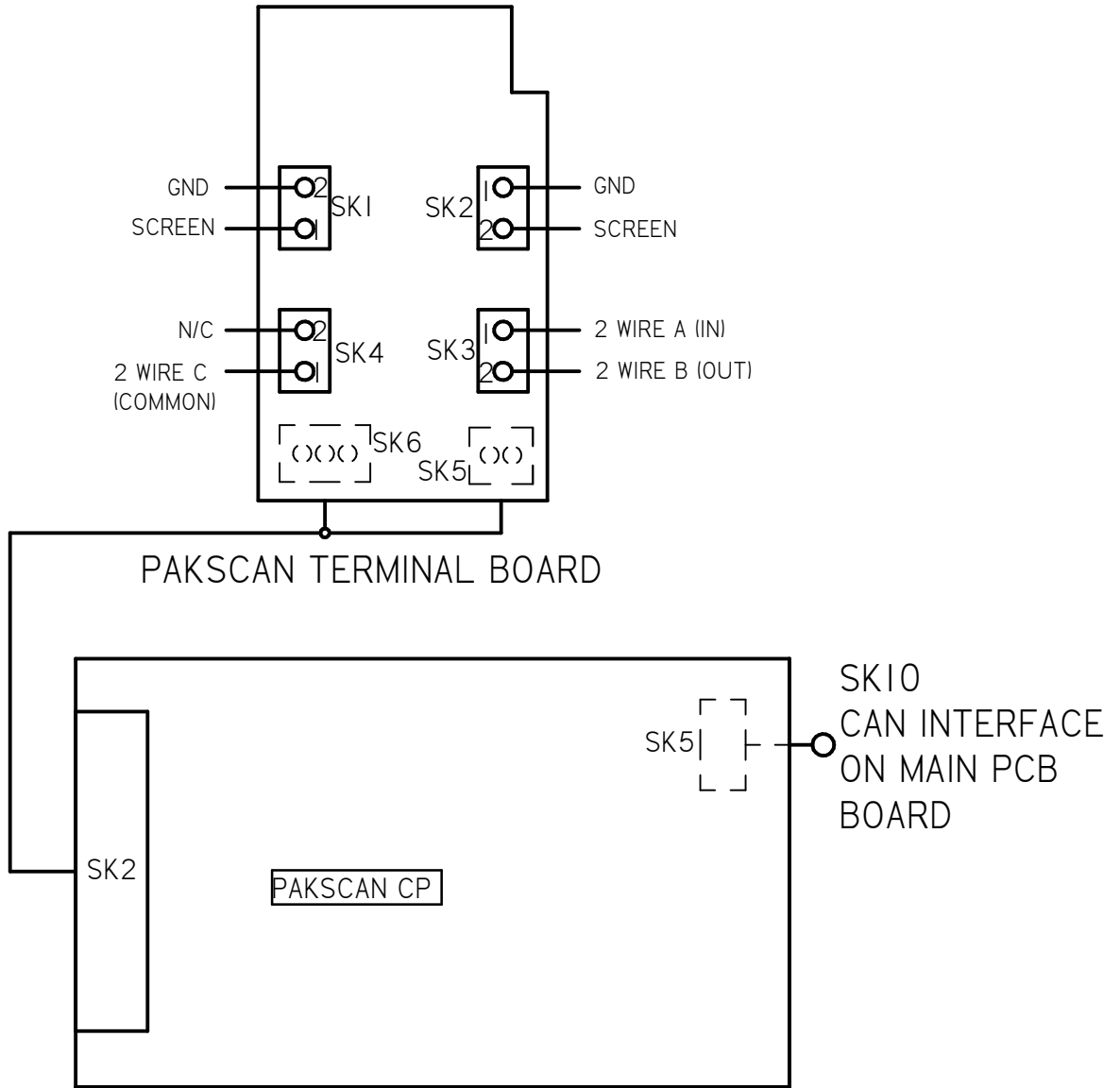
A	INITIAL RELEASE	ECE 12APR18
REV	DESCRIPTION	DATE

<b>TOLERANCES</b> UNLESS OTHERWISE SPECIFIED .XX = ±.02    XXX = ±.005    ANGULAR ±1°		
SCALE: <b>NTS</b>		
DRAWN: <b>ECE</b>	PROD. DV.	PROD. ENG.
DATE: <b>12APR18</b>	DATE:	DATE:

  
**rotork**  
**Controls**  
 MILWAUKEE, WISCONSIN, USA

This print is the property of Rotork Process Controls and is loaned in confidence subject to return. All rights to design or invention are reserved.

TITLE : <b>CMA 1500 &amp; 3000 WIRING DIAGRAM</b>	
FOR : <b>24V DC POWER OPERATION LOCAL CONTROLS, UPS, PAKSCAN</b>	
SHT 2 OF 3	<b>M42-KS</b>



A	INITIAL RELEASE	ECE		12APR18	
REV	DESCRIPTION	DATE			
<b>TOLERANCES</b> UNLESS OTHERWISE SPECIFIED .XX = ±.02    XXX = ±.005    ANGULAR ±1°			 MILWAUKEE, WISCONSIN, USA		TITLE : <b>CMA 1500 &amp; 3000</b> <b>WIRING DIAGRAM</b>
SCALE: <b>NTS</b>					FOR : 24V DC POWER OPERATION LOCAL CONTROLS, UPS, PAKSCAN
DRAWN:	PROD. DV.	PROD. ENG.		This print is the property of Rotork Process Controls and is loaned in confidence subject to return. All rights to design or invention are reserved.	
ECE					
DATE:	DATE:	DATE:		SHT	M42-KS
12APR18				3 OF 3	