

A	INITIAL RELEASE	ECE 12APR18
REV	DESCRIPTION	DATE

NOTES:  
 1. 4-20 mA OUTPUT, 24VDC NOMINAL, (18-30 VDC MAX)  
 2. SEE ADDITIONAL PAGES FOR COMMUNICATIONS WD IF ATTACHED

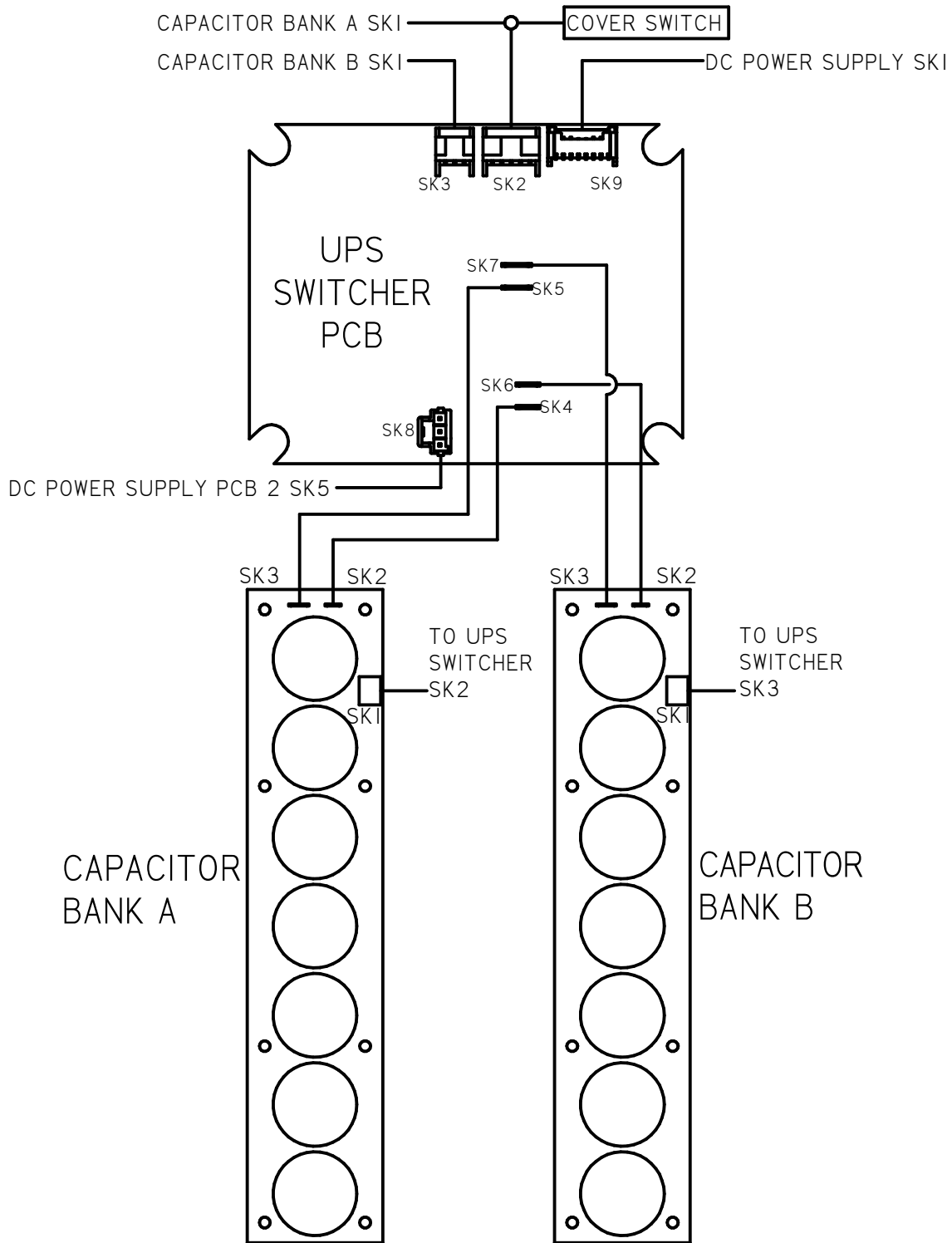
<b>TOLERANCES</b> UNLESS OTHERWISE SPECIFIED .XX = ±.02    XXX = ±.005    ANGULAR ±1°		
SCALE: NTS		
DRAWN: ECE	PROD. DV.	PROD. ENG.
DATE: 12APR18	DATE:	DATE:

**rotork**  
Controls

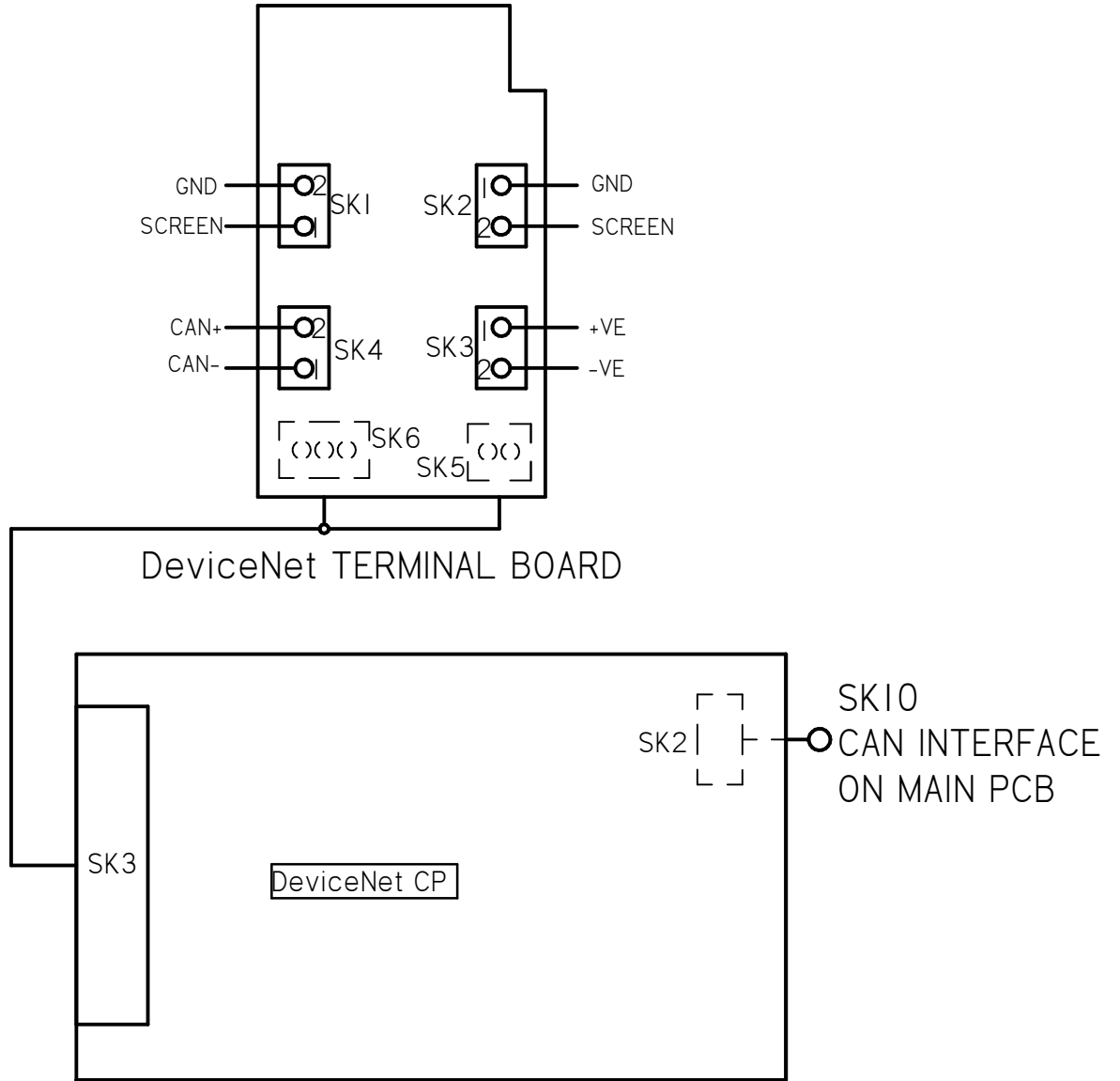
MILWAUKEE, WISCONSIN, USA


This print is the property of Rotork Process Controls and is loaned in confidence subject to return. All rights to design or invention are reserved.

TITLE : CMA 1500 & 3000 WIRING DIAGRAM	
FOR : 24V DC POWER OPERATION LOCAL CONTROLS, UPS, DEVICE NET	
SHT 1 OF 3	M42-NS



A	INITIAL RELEASE	ECE 12APR18
REV	DESCRIPTION	DATE
<p><b>TOLERANCES</b> UNLESS OTHERWISE SPECIFIED .XX = ±.02    XXX = ±.005    ANGULAR ±1°</p>		
SCALE: <b>NTS</b>		
DRAWN: <b>ECE</b>	PROD. DV.	PROD. ENG.
DATE: <b>12APR18</b>	DATE:	DATE:
 <b>MILWAUKEE, WISCONSIN, USA</b>		TITLE : <b>CMA 1500 &amp; 3000          WIRING DIAGRAM</b>
This print is the property of Rotork Process Controls and is loaned in confidence subject to return. All rights to design or invention are reserved.		FOR : <b>24V DC POWER OPERATION          LOCAL CONTROLS, UPS, DEVICE NET</b>
		SHT 2 OF 3
		<b>M42-NS</b>



A	INITIAL RELEASE	ECE		12APR18	
REV	DESCRIPTION	DATE			
<b>TOLERANCES</b> UNLESS OTHERWISE SPECIFIED .XX = ±.02    XXX = ±.005    ANGULAR ±1°			 MILWAUKEE, WISCONSIN, USA		TITLE : <b>CMA 1500 &amp; 3000</b> <b>WIRING DIAGRAM</b>
SCALE: <b>NTS</b>					FOR : 24V DC POWER OPERATION LOCAL CONTROLS, UPS, DEVICE NET
DRAWN:	PROD. DV.	PROD. ENG.		This print is the property of Rotork Process Controls and is loaned in confidence subject to return. All rights to design or invention are reserved.	
ECE				SHT 3 OF 3	<b>M42-NS</b>
DATE:	DATE:	DATE:			
12APR18					