

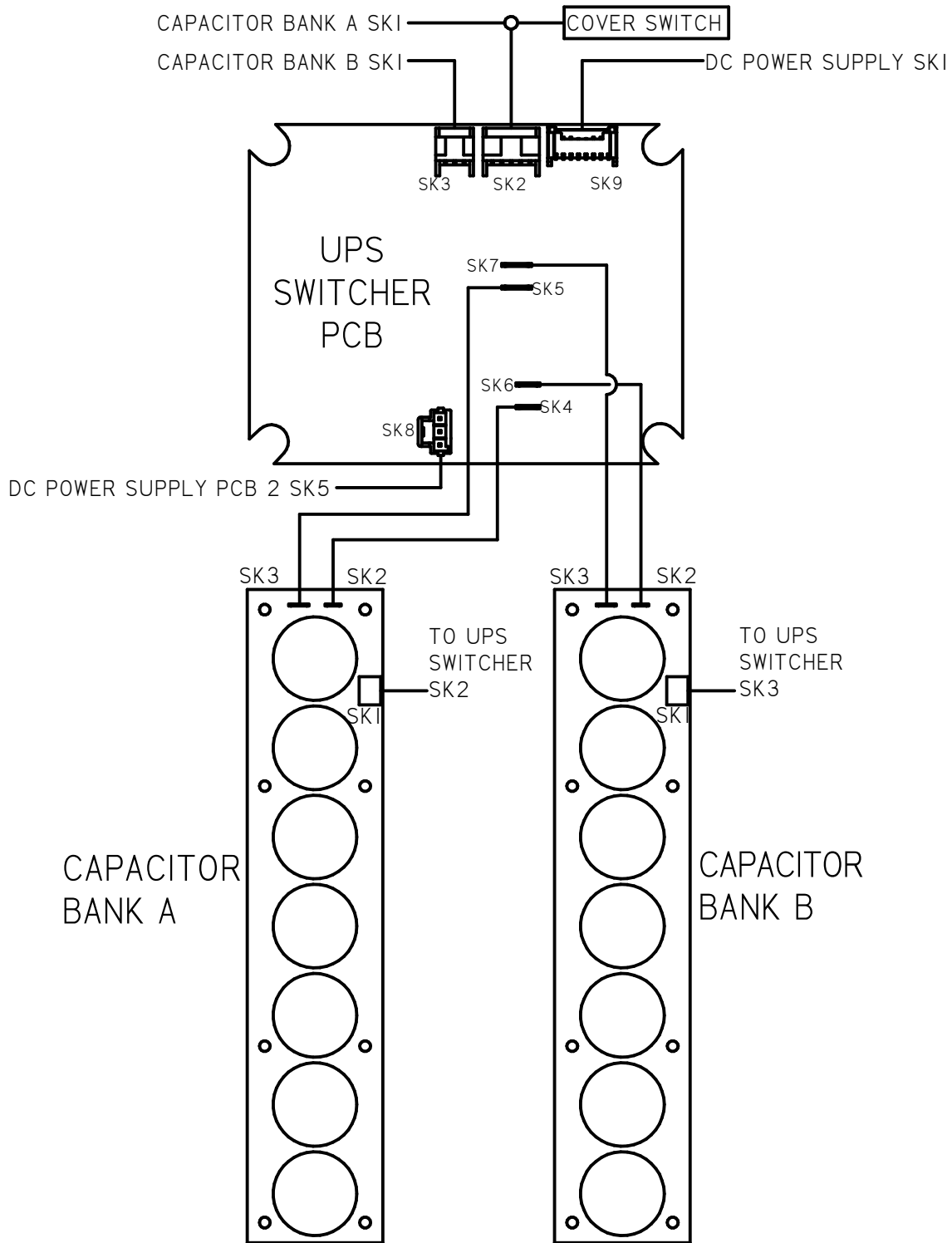
| | | |
|-----|-----------------|------|
| A | INITIAL RELEASE | ECE |
| REV | DESCRIPTION | DATE |

NOTES:
 1. 4-20 mA OUTPUT, 24VDC NOMINAL, (18-30 VDC MAXI)
 2. SEE ADDITIONAL PAGES FOR COMMUNICATIONS WD IF ATTACHED

| | | |
|---|-----------|------------|
| TOLERANCES UNLESS OTHERWISE SPECIFIED .XX = ±.02 XXX = ±.005 ANGULAR ±1° | | |
| SCALE: NTS | | |
| DRAWN: ECE | PROD. DV. | PROD. ENG. |
| DATE: 12APR18 | DATE: | DATE: |


 MILWAUKEE, WISCONSIN, USA
 This print is the property of Rotork Process Controls and is loaned in confidence subject to return. All rights to design or invention are reserved.

| | |
|--|---------------|
| TITLE : CMA 1500 & 3000 WIRING DIAGRAM | |
| FOR : 12V DC POWER OPERATION LOCAL CONTROLS, UPS | |
| SHT 1 OF 2 | M52-0S |



| | | |
|-----|-----------------|----------------|
| | | |
| A | INITIAL RELEASE | ECE 12APR18 |
| REV | DESCRIPTION | DATE |

| | | |
|---|-----------|------------|
| TOLERANCES UNLESS OTHERWISE SPECIFIED .XX = ±.02 XXX = ±.005 ANGULAR ±1° | | |
| SCALE: NTS | | |
| DRAWN: ECE | PROD. DV. | PROD. ENG. |
| DATE: 12APR18 | DATE: | DATE: |


rotork
Controls
 MILWAUKEE, WISCONSIN, USA

This print is the property of Rotork Process Controls and is loaned in confidence subject to return. All rights to design or invention are reserved.

| | |
|--|---------------|
| TITLE : CMA 1500 & 3000 WIRING DIAGRAM | |
| FOR : 12V DC POWER OPERATION LOCAL CONTROLS, UPS | |
| SHT 2 OF 2 | M52-0S |