

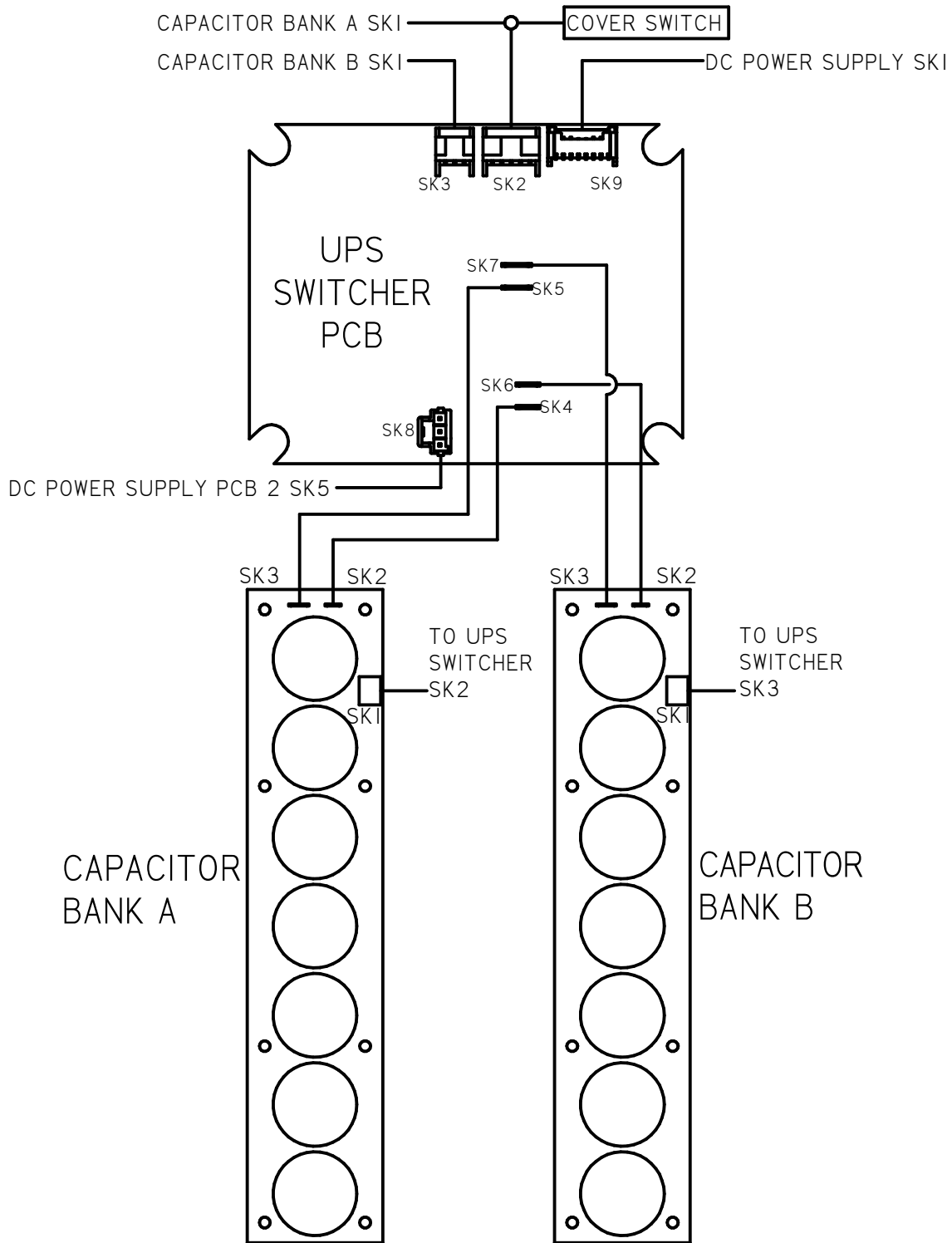
| | | |
|-----|-----------------|------|
| A | INITIAL RELEASE | ECE |
| REV | DESCRIPTION | DATE |

NOTES:
 1. 4-20 mA OUTPUT, 24VDC NOMINAL, (18-30 VDC MAX)
 2. SEE ADDITIONAL PAGES FOR COMMUNICATIONS WD IF ATTACHED

| | | |
|---|-----------|------------|
| TOLERANCES UNLESS OTHERWISE SPECIFIED .XX = ±.02 XXX = ±.005 ANGULAR ±1° | | |
| SCALE: NTS | | |
| DRAWN: ECE | PROD. DV. | PROD. ENG. |
| DATE: 12APR18 | DATE: | DATE: |


 MILWAUKEE, WISCONSIN, USA
 This print is the property of Rotork Process Controls and is loaned in confidence subject to return. All rights to design or invention are reserved.

| | |
|---|---------------|
| TITLE : CMA 1500 & 3000 WIRING DIAGRAM | |
| FOR : 12V DC POWER OPERATION LOCAL CONTROLS, UPS, RIRO | |
| SHT 1 OF 3 | M52-DS |



| | | |
|-----|-----------------|----------------|
| | | |
| A | INITIAL RELEASE | ECE 12APR18 |
| REV | DESCRIPTION | DATE |

| | | |
|---|-----------|------------|
| TOLERANCES UNLESS OTHERWISE SPECIFIED .XX = ±.02 XXX = ±.005 ANGULAR ±1° | | |
| SCALE: NTS | | |
| DRAWN: ECE | PROD. DV. | PROD. ENG. |
| DATE: 12APR18 | DATE: | DATE: |


rotork
Controls
 MILWAUKEE, WISCONSIN, USA

This print is the property of Rotork Process Controls and is loaned in confidence subject to return. All rights to design or invention are reserved.

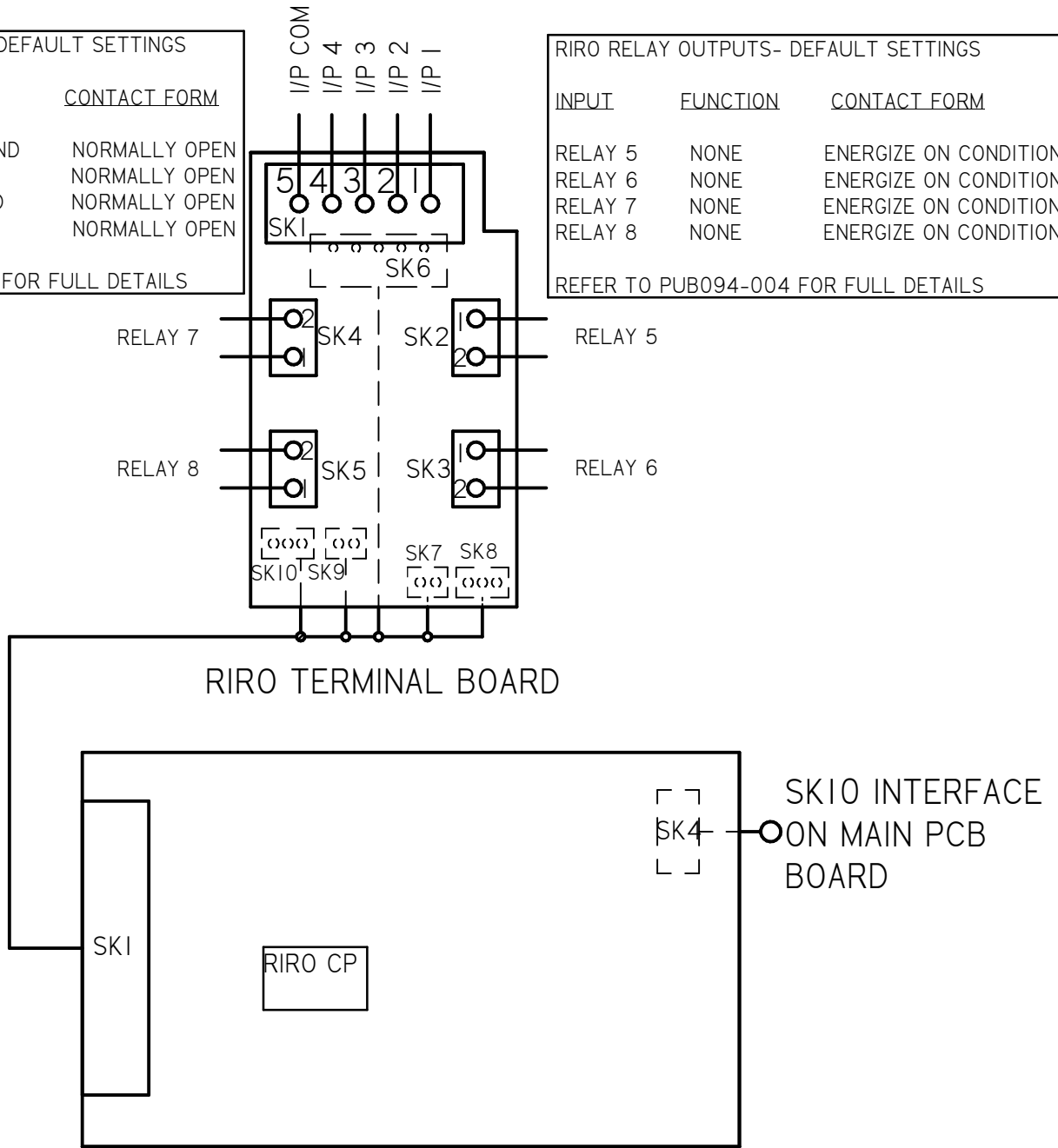
| | |
|---|---------------|
| TITLE : CMA 1500 & 3000 WIRING DIAGRAM | |
| FOR : 12V DC POWER OPERATION LOCAL CONTROLS, UPS, RIRO | |
| SHT 2 OF 3 | M52-DS |

| RIRO REMOTE INPUTS - DEFAULT SETTINGS | | |
|---------------------------------------|---------------|---------------|
| INPUT | FUNCTION | CONTACT FORM |
| I/P1 | CLOSE COMMAND | NORMALLY OPEN |
| I/P2 | STOP/MAINTAIN | NORMALLY OPEN |
| I/P3 | OPEN COMMAND | NORMALLY OPEN |
| I/P4 | ESD | NORMALLY OPEN |

REFER TO PUB094-004 FOR FULL DETAILS

| RIRO RELAY OUTPUTS- DEFAULT SETTINGS | | |
|--------------------------------------|----------|-----------------------|
| INPUT | FUNCTION | CONTACT FORM |
| RELAY 5 | NONE | ENERGIZE ON CONDITION |
| RELAY 6 | NONE | ENERGIZE ON CONDITION |
| RELAY 7 | NONE | ENERGIZE ON CONDITION |
| RELAY 8 | NONE | ENERGIZE ON CONDITION |

REFER TO PUB094-004 FOR FULL DETAILS



| | | |
|-----|-----------------|----------------|
| A | INITIAL RELEASE | ECE 12APR18 |
| REV | DESCRIPTION | DATE |

| | | |
|---|-----------|------------|
| TOLERANCES UNLESS OTHERWISE SPECIFIED .XX = ±.02 XXX = ±.005 ANGULAR ±1° | | |
| SCALE: NTS | | |
| DRAWN: ECE | PROD. DV. | PROD. ENG. |
| DATE: 12APR18 | DATE: | DATE: |


rotork
Controls
 MILWAUKEE, WISCONSIN, USA

This print is the property of Rotork Process Controls and is loaned in confidence subject to return. All rights to design or invention are reserved.

| | |
|--|---------------|
| TITLE : CMA 1500 & 3000 WIRING DIAGRAM | |
| FOR : 12V DC POWER OPERATION LOCAL CONTROLS, UPS, RIRO | |
| SHT 3 OF 3 | M52-DS |