

A	INITIAL RELEASE	ECE
REV	DESCRIPTION	DATE

NOTES:
 1. 4-20 mA OUTPUT, 24VDC NOMINAL, (18-30 VDC MAXI)
 2. SEE ADDITIONAL PAGES FOR COMMUNICATIONS WD IF ATTACHED

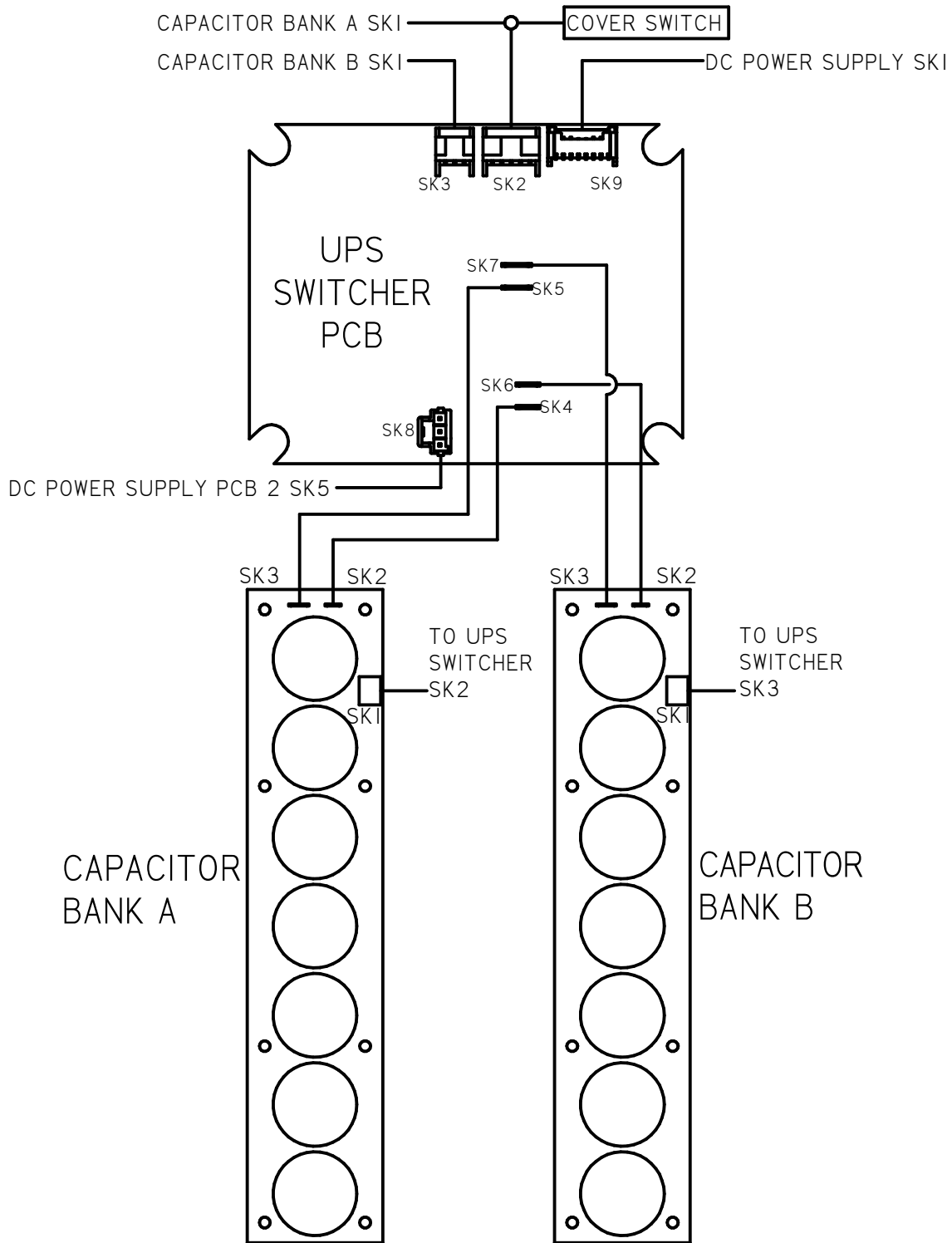
TOLERANCES UNLESS OTHERWISE SPECIFIED .XX = ±.02 XXX = ±.005 ANGULAR ±1°		
SCALE: NTS		
DRAWN: ECE	PROD. DV.	PROD. ENG.
DATE: 12APR18	DATE:	DATE:

rotork[®]
Controls

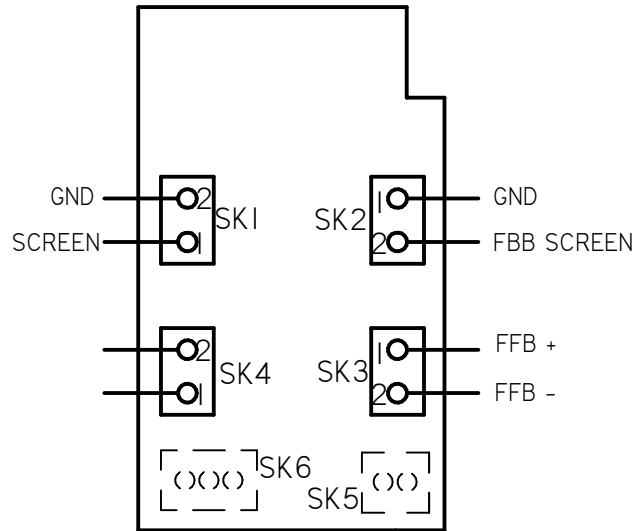
MILWAUKEE, WISCONSIN, USA

This print is the property of Rotork Process Controls and is loaned in confidence subject to return. All rights to design or invention are reserved.

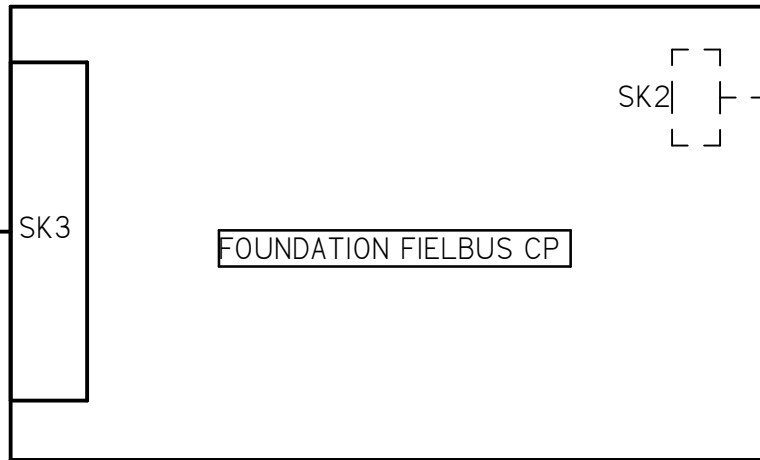
TITLE : CMA 1500 & 3000 WIRING DIAGRAM	
FOR : 12V DC POWER OPERATION LOCAL CONTROLS, UPS, FOUNDATION FIELDBUS	
SHT 1 OF 3	M52-FS



A	INITIAL RELEASE	ECE 12APR18
REV	DESCRIPTION	DATE
<p>TOLERANCES UNLESS OTHERWISE SPECIFIED .XX = ±.02 XXX = ±.005 ANGULAR ±1°</p>		
SCALE: NTS		
DRAWN: ECE	PROD. DV.	PROD. ENG.
DATE: 12APR18	DATE:	DATE:
 MILWAUKEE, WISCONSIN, USA		TITLE : CMA 1500 & 3000 WIRING DIAGRAM
This print is the property of Rotork Process Controls and is loaned in confidence subject to return. All rights to design or invention are reserved.		FOR : 12V DC POWER OPERATION LOCAL CONTROLS, UPS, FOUNDATION FIELDBUS
		SHT 2 OF 3
		M52-FS



FOUNDATION FIELDBUS TERMINAL BOARD



SK10
CAN INTERFACE
ON MAIN PCB
BOARD

A	INITIAL RELEASE		ECE 12APR18		
REV	DESCRIPTION		DATE		
TOLERANCES UNLESS OTHERWISE SPECIFIED .XX = ±.02 XXX = ±.005 ANGULAR ±1°			 MILWAUKEE, WISCONSIN, USA		TITLE : CMA 1500 & 3000 WIRING DIAGRAM
SCALE: NTS					FOR : 12V DC POWER OPERATION LOCAL CONTROLS, UPS, FOUNDATION FIELDBUS
DRAWN:	PROD. DV.	PROD. ENG.	This print is the property of Rotork Process Controls and is loaned in confidence subject to return. All rights to design or invention are reserved.		SHT 3 OF 3
ECE					M52-FS
DATE:	DATE:	DATE:			
12APR18					