


A	INITIAL RELEASE	ECE
REV	DESCRIPTION	DATE

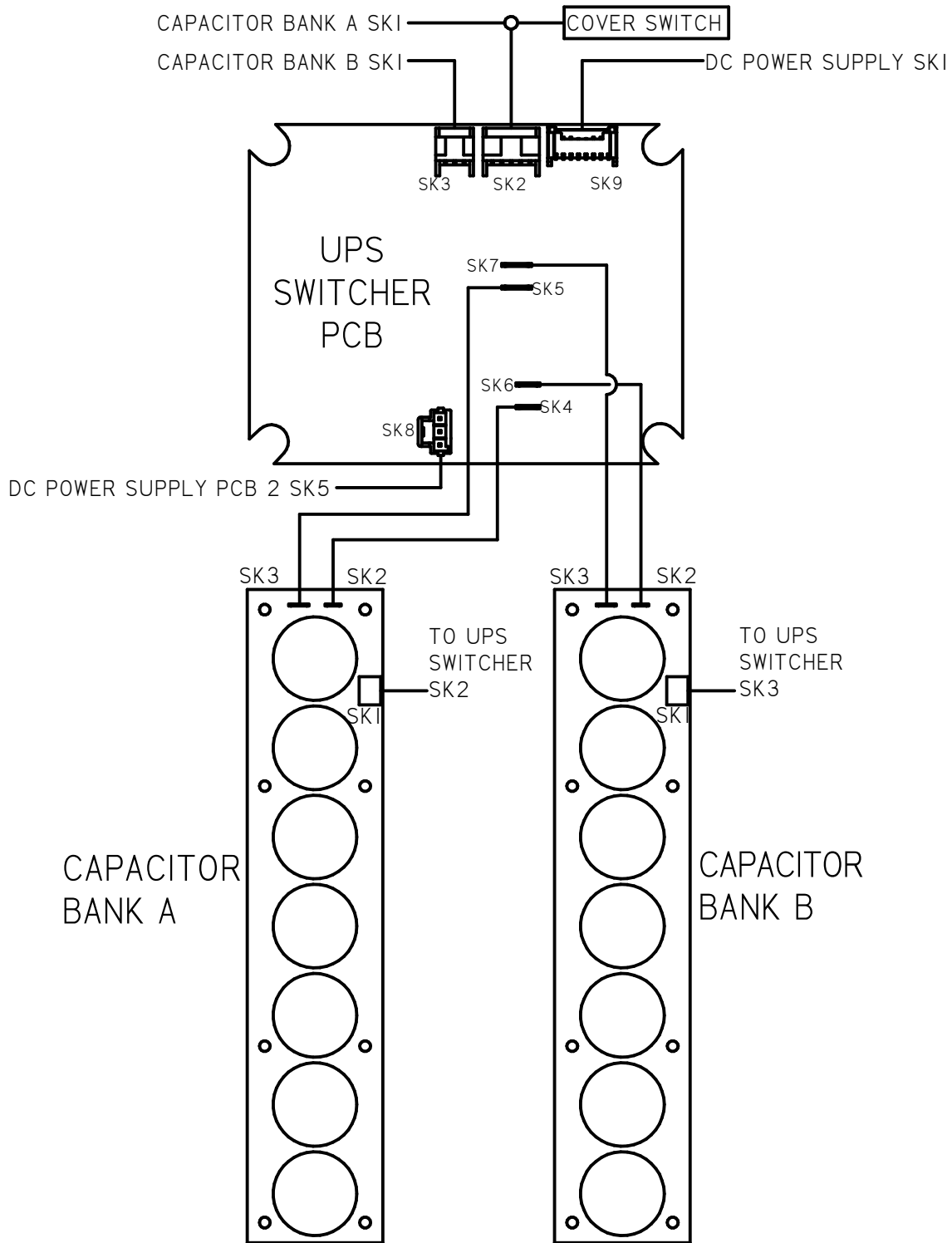
NOTES:
 1. 4-20 mA OUTPUT, 24VDC NOMINAL, (18-30 VDC MAX)
 2. SEE ADDITIONAL PAGES FOR COMMUNICATIONS WD IF ATTACHED

TOLERANCES UNLESS OTHERWISE SPECIFIED .XX = ±.02 XXX = ±.005 ANGULAR ±1°		
SCALE: NTS		
DRAWN: ECE	PROD. DV.	PROD. ENG.
DATE: 12APR18	DATE:	DATE:

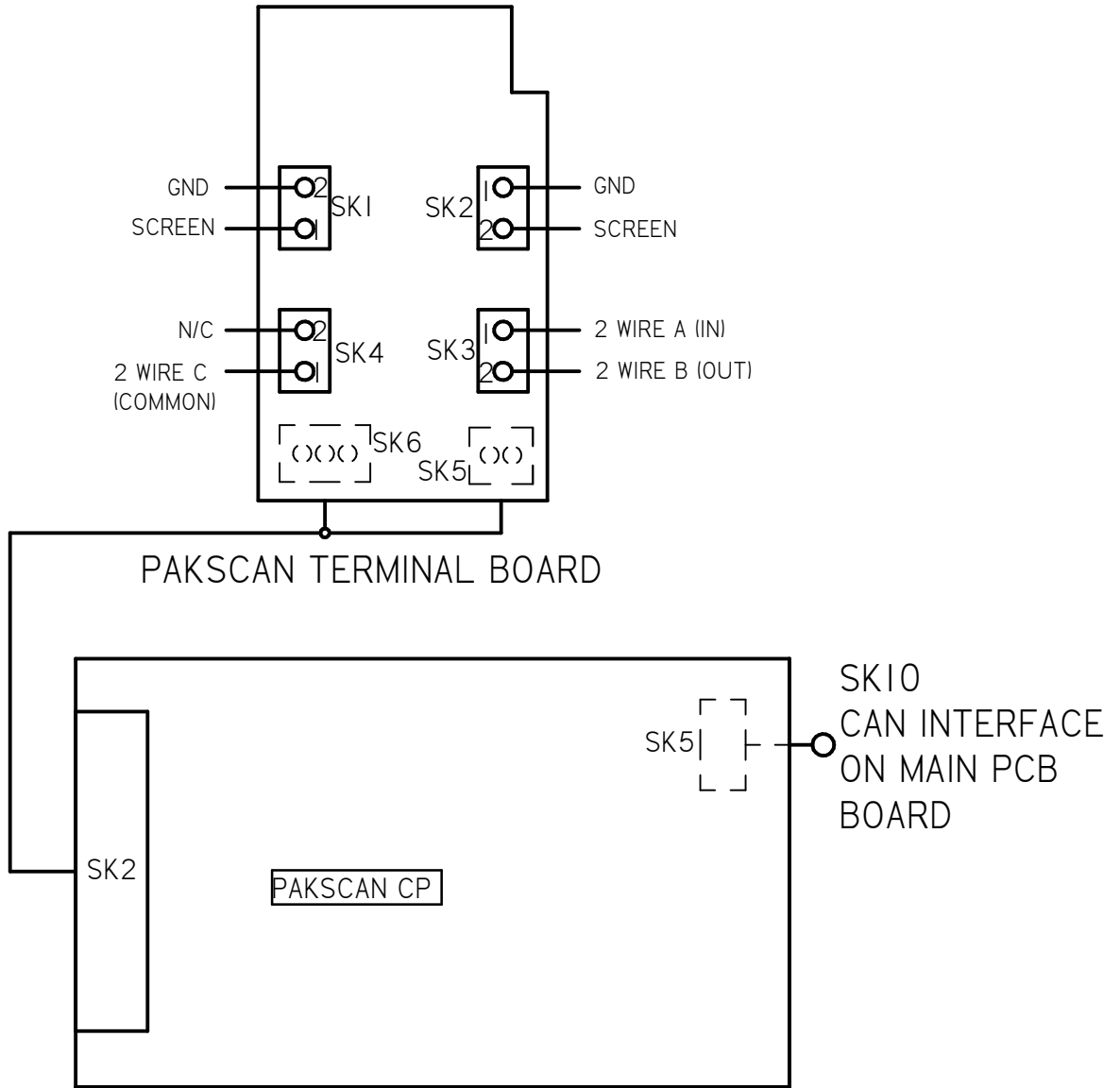

 MILWAUKEE, WISCONSIN, USA

This print is the property of Rotork Process Controls and is loaned in confidence subject to return. All rights to design or invention are reserved.

TITLE : CMA 1500 & 3000 WIRING DIAGRAM	
FOR : 12V DC POWER OPERATION LOCAL CONTROLS, UPS, PAKSCAN	
SHT 1 OF 3	M52-KS



A	INITIAL RELEASE	ECE 12APR18
REV	DESCRIPTION	DATE
TOLERANCES UNLESS OTHERWISE SPECIFIED .XX = ±.02 XXX = ±.005 ANGULAR ±1°		 MILWAUKEE, WISCONSIN, USA
SCALE: NTS		
DRAWN:	PROD. DV.	PROD. ENG.
ECE		
DATE:	DATE:	DATE:
12APR18		
TITLE : CMA 1500 & 3000 WIRING DIAGRAM		FOR : 12V DC POWER OPERATION LOCAL CONTROLS, UPS, PAKSCAN
SHT 2 OF 3		
		M52-KS
This print is the property of Rotork Process Controls and is loaned in confidence subject to return. All rights to design or invention are reserved.		



A	INITIAL RELEASE		ECE		12APR18
REV	DESCRIPTION		DATE		
TOLERANCES UNLESS OTHERWISE SPECIFIED .XX = ±.02 XXX = ±.005 ANGULAR ±1°			 MILWAUKEE, WISCONSIN, USA		TITLE : CMA 1500 & 3000 WIRING DIAGRAM
SCALE: NTS					FOR : 12V DC POWER OPERATION LOCAL CONTROLS, UPS, PAKSCAN
DRAWN:	PROD. DV.	PROD. ENG.	This print is the property of Rotork Process Controls and is loaned in confidence subject to return. All rights to design or invention are reserved.		SHT
ECE					3 OF 3
DATE:	DATE:	DATE:	M52-KS		
12APR18					