

A	INITIAL RELEASE	ECE
REV	DESCRIPTION	DATE
<p>TOLERANCES UNLESS OTHERWISE SPECIFIED .XX = ±.02 XXX = ±.005 ANGULAR ±1°</p>		
SCALE: NTS		
DRAWN: ECE	PROD. DV.	PROD. ENG.
DATE: 12APR18	DATE:	DATE:

NOTES:
1. 4-20 mA OUTPUT, 24VDC NOMINAL, (18-30 VDC MAX)
2. SEE ADDITIONAL PAGES FOR COMMUNICATIONS WD IF ATTACHED

rotork
Controls

MILWAUKEE, WISCONSIN, USA

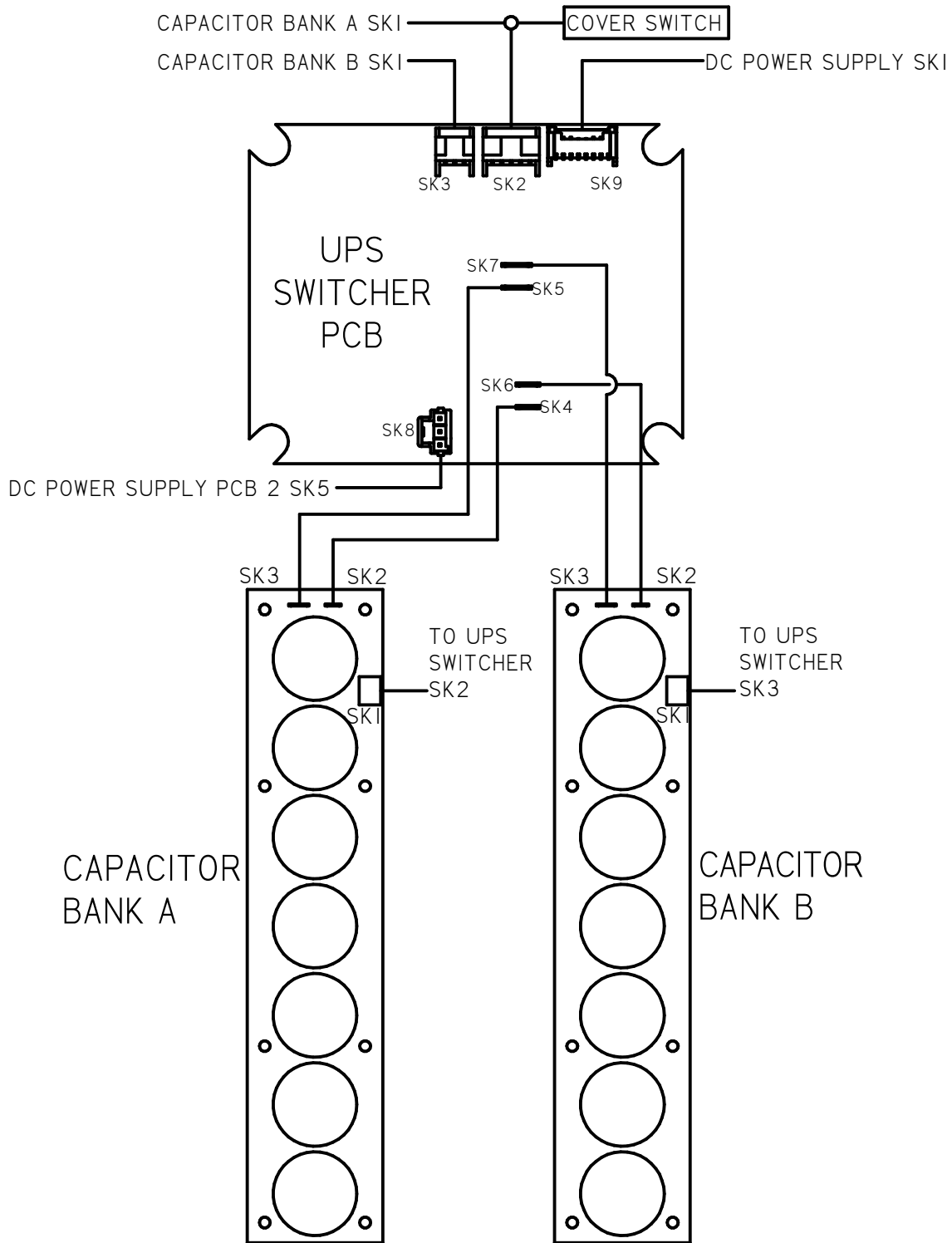
This print is the property of Rotork Process Controls and is loaned in confidence subject to return. All rights to design or invention are reserved.

TITLE :
CMA 1500 & 3000
WIRING DIAGRAM

FOR :
12V DC POWER OPERATION
LOCAL CONTROLS, UPS, MODBUS SINGLE CHANNEL

SHT
1 OF 3

M52-MS



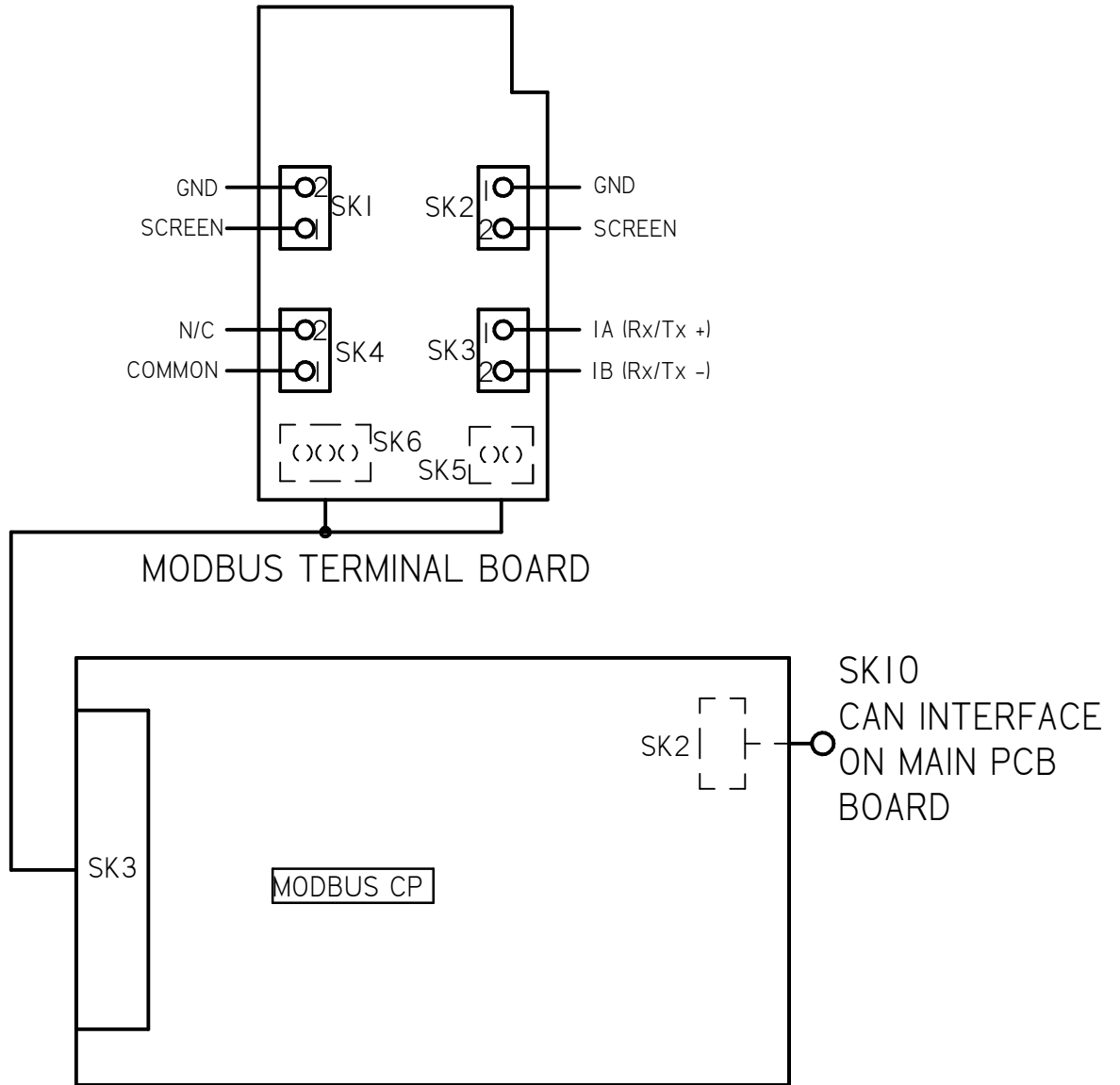
A	INITIAL RELEASE	ECE 12APR18
REV	DESCRIPTION	DATE


TOLERANCES UNLESS OTHERWISE SPECIFIED .XX = ±.02 XXX = ±.005 ANGULAR ±1°		
SCALE: NTS		
DRAWN: ECE	PROD. DV.	PROD. ENG.
DATE: 12APR18	DATE:	DATE:


rotork
Controls
 MILWAUKEE, WISCONSIN, USA

This print is the property of Rotork Process Controls and is loaned in confidence subject to return. All rights to design or invention are reserved.

TITLE : CMA 1500 & 3000 WIRING DIAGRAM	
FOR : 12V DC POWER OPERATION LOCAL CONTROLS, UPS, MODBUS SINGLE CHANNEL	
SHT 2 OF 3	M52-MS



A	INITIAL RELEASE	ECE		12APR18	
REV	DESCRIPTION	DATE			
TOLERANCES UNLESS OTHERWISE SPECIFIED .XX = ±.02 XXX = ±.005 ANGULAR ±1°			 MILWAUKEE, WISCONSIN, USA		TITLE : CMA 1500 & 3000 WIRING DIAGRAM
SCALE: NTS					FOR : 12V DC POWER OPERATION LOCAL CONTROLS, UPS, MODBUS SINGLE CHANNEL
DRAWN:	PROD. DV.	PROD. ENG.		This print is the property of Rotork Process Controls and is loaned in confidence subject to return. All rights to design or invention are reserved.	
ECE				SHT 3 OF 3	M52-MS
DATE:	DATE:	DATE:			
12APR18					