

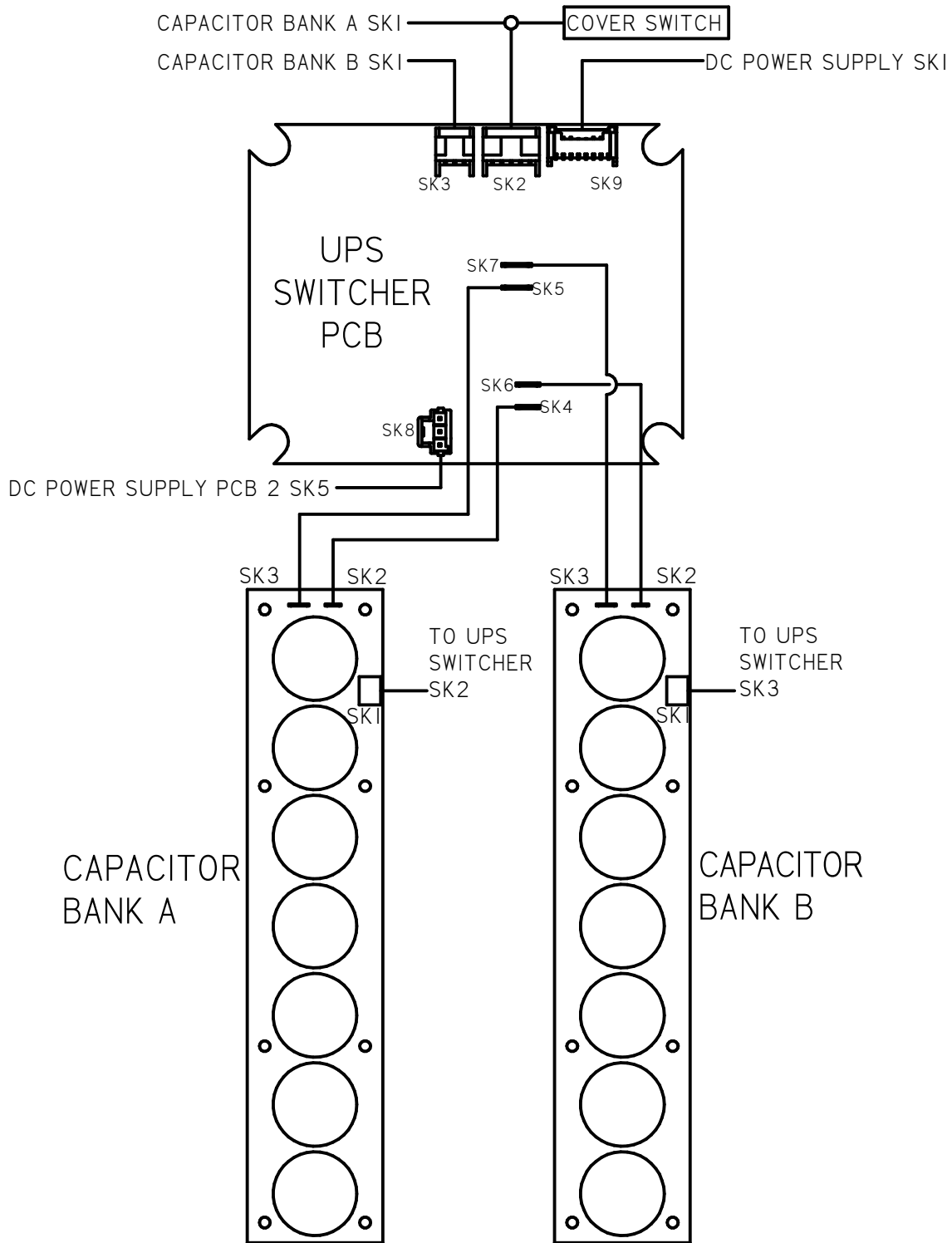
A	INITIAL RELEASE	ECE
REV	DESCRIPTION	DATE

NOTES:
 1. 4-20 mA OUTPUT, 24VDC NOMINAL, (18-30 VDC MAX)
 2. SEE ADDITIONAL PAGES FOR COMMUNICATIONS WD IF ATTACHED

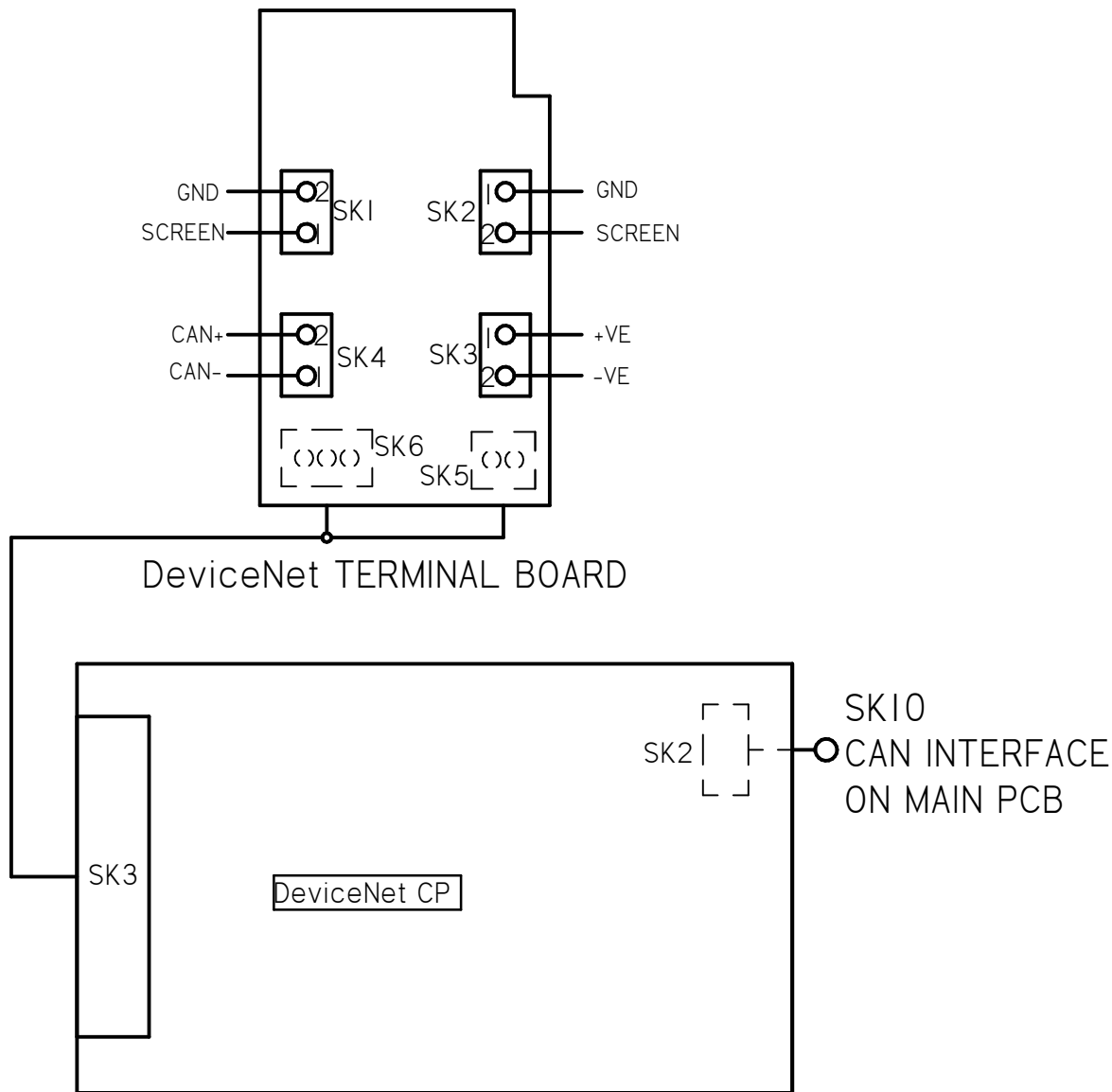
TOLERANCES UNLESS OTHERWISE SPECIFIED .XX = ±.02 XXX = ±.005 ANGULAR ±1°		
SCALE: NTS		
DRAWN: ECE	PROD. DV.	PROD. ENG.
DATE: 12APR18	DATE:	DATE:


 MILWAUKEE, WISCONSIN, USA
 This print is the property of Rotork Process Controls and is loaned in confidence subject to return. All rights to design or invention are reserved.

TITLE : CMA 1500 & 3000 WIRING DIAGRAM	
FOR : 12V DC POWER OPERATION LOCAL CONTROLS, UPS, DEVICE NET	
SHT 1 OF 3	M52-NS



A	INITIAL RELEASE	ECE 12APR18
REV	DESCRIPTION	DATE
<p>TOLERANCES UNLESS OTHERWISE SPECIFIED .XX = ±.02 XXX = ±.005 ANGULAR ±1°</p>		
<p>SCALE: NTS</p>		
DRAWN:	PROD. DV.	PROD. ENG.
ECE		
DATE:	DATE:	DATE:
12APR18		
 MILWAUKEE, WISCONSIN, USA		<p>TITLE : CMA 1500 & 3000 WIRING DIAGRAM</p> <p>FOR : 12V DC POWER OPERATION LOCAL CONTROLS, UPS, DEVICE NET</p>
<p>This print is the property of Rotork Process Controls and is loaned in confidence subject to return. All rights to design or invention are reserved.</p>		<p>SHT 2 OF 3</p>
		M52-NS



A	INITIAL RELEASE	ECE 12APR18
REV	DESCRIPTION	DATE
TOLERANCES UNLESS OTHERWISE SPECIFIED .XX = ±.02 XXX = ±.005 ANGULAR ±1°		 MILWAUKEE, WISCONSIN, USA
SCALE: NTS		
DRAWN:	PROD. DV.	PROD. ENG.
ECE		
DATE:	DATE:	DATE:
12APR18		
TITLE : CMA 1500 & 3000 WIRING DIAGRAM		FOR : 12V DC POWER OPERATION LOCAL CONTROLS, UPS, DEVICE NET
SHT 3 OF 3		
		M52-NS
This print is the property of Rotork Process Controls and is loaned in confidence subject to return. All rights to design or invention are reserved.		