

| | | |
|-----|-----------------|---------|
| A | INITIAL RELEASE | ECE |
| REV | DESCRIPTION | DATE |
| | | 12APR18 |

NOTES:
 1. 4-20 mA OUTPUT, 24VDC NOMINAL, (18-30 VDC MAX)
 2. SEE ADDITIONAL PAGES FOR COMMUNICATIONS WD IF ATTACHED

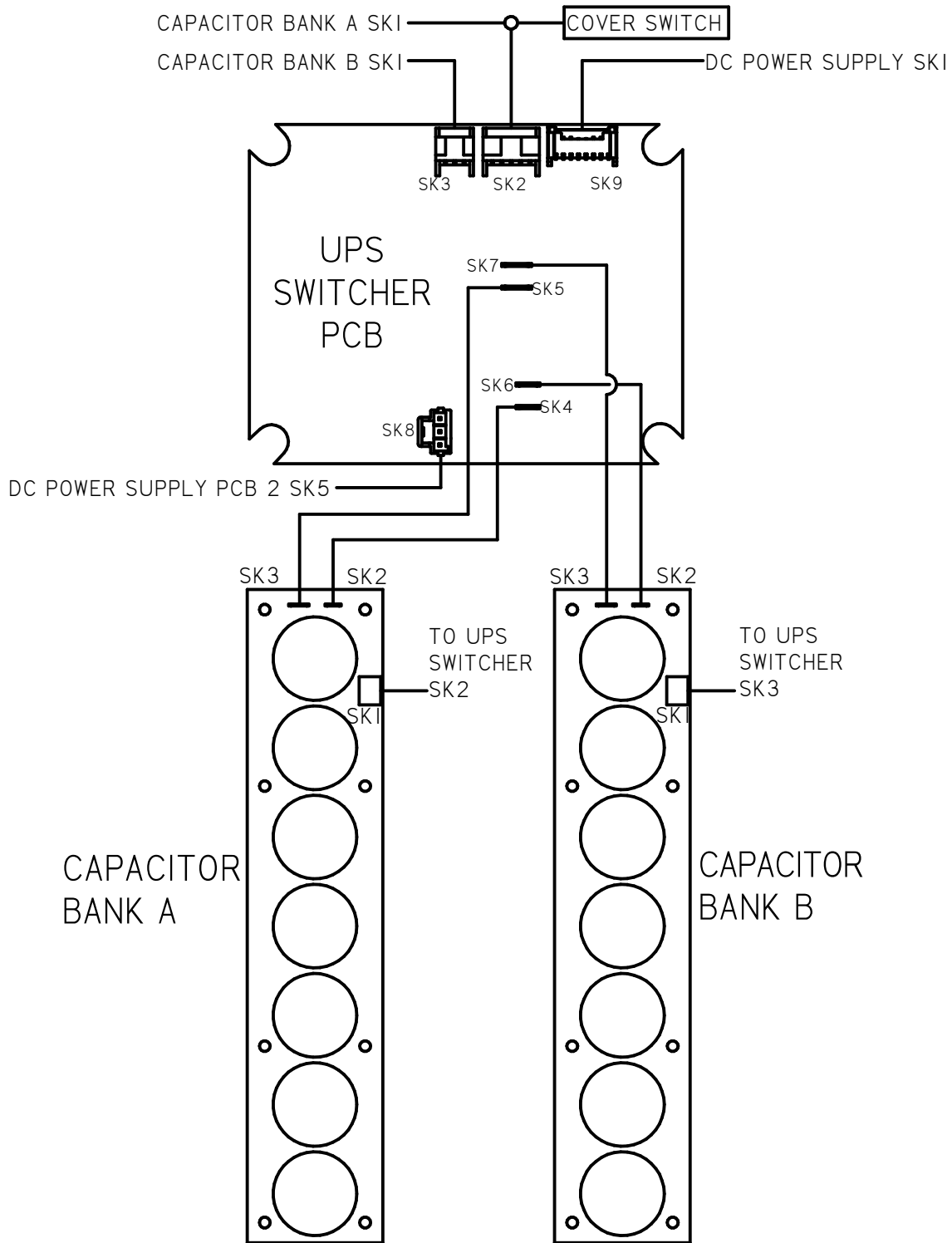
| | | |
|---|-----------|------------|
| TOLERANCES UNLESS OTHERWISE SPECIFIED .XX = ±.02 XXX = ±.005 ANGULAR ±1° | | |
| SCALE: NTS | | |
| DRAWN: ECE | PROD. DV. | PROD. ENG. |
| DATE: 12APR18 | DATE: | DATE: |

rotork[®]
Controls

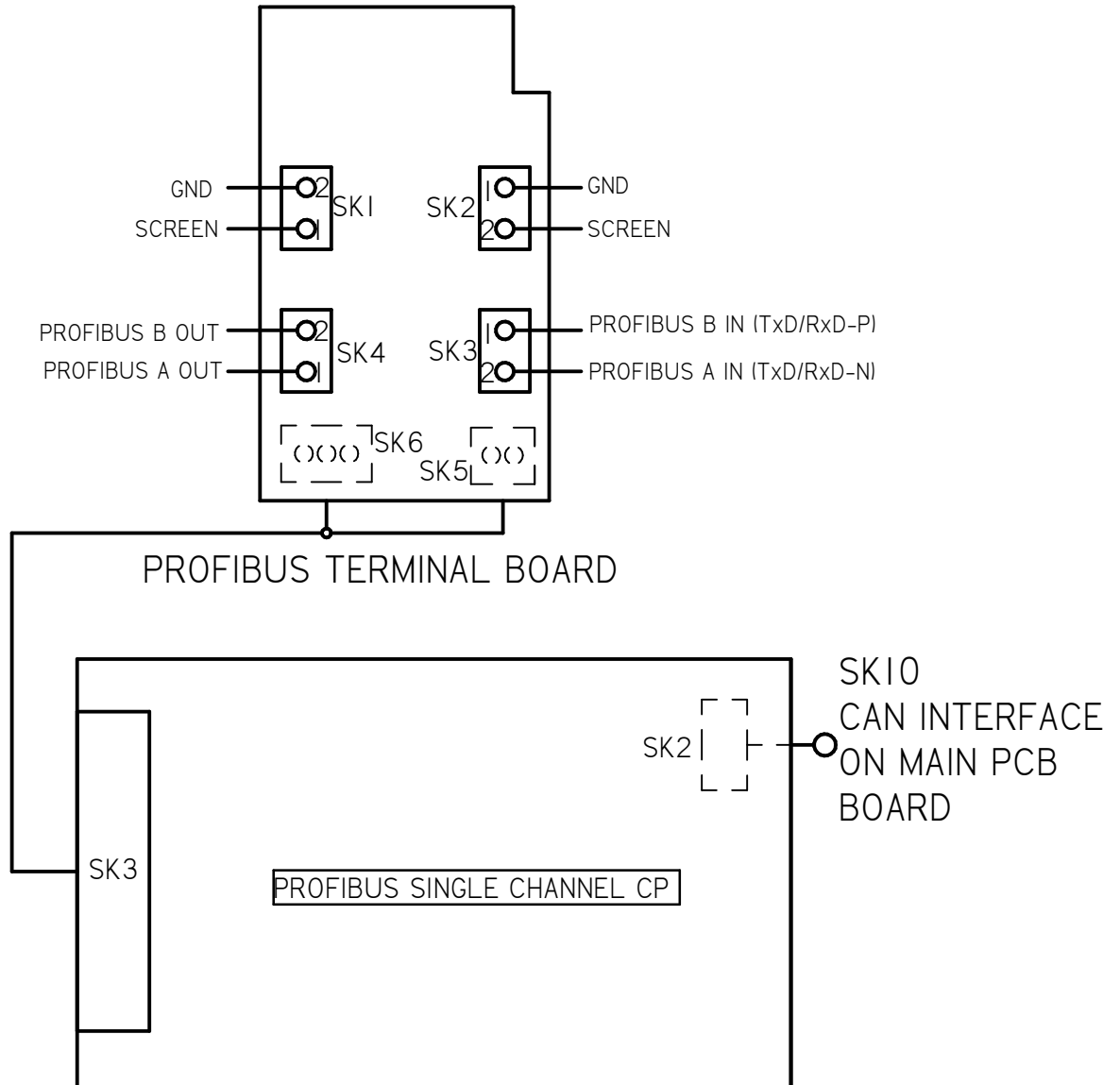
MILWAUKEE, WISCONSIN, USA


This print is the property of Rotork Process Controls and is loaned in confidence subject to return. All rights to design or invention are reserved.

| | |
|--|---------------|
| TITLE : CMA 1500 & 3000 WIRING DIAGRAM | |
| FOR : 12V DC POWER OPERATION LOCAL CONTROLS, UPS, PROFIBUS | |
| SHT 1 OF 3 | M52-PS |



| | | |
|--|-----------------|---|
| | | |
| A | INITIAL RELEASE | ECE 12APR18 |
| REV | DESCRIPTION | DATE |
| <p>TOLERANCES UNLESS OTHERWISE SPECIFIED .XX = ±.02 XXX = ±.005 ANGULAR ±1°</p> | | |
| SCALE: NTS | | |
| DRAWN: ECE | PROD. DV. | PROD. ENG. |
| DATE: 12APR18 | DATE: | DATE: |
|  MILWAUKEE, WISCONSIN, USA | | <p>TITLE : CMA 1500 & 3000 WIRING DIAGRAM</p> <p>FOR : 12V DC POWER OPERATION LOCAL CONTROLS, UPS, PROFIBUS</p> |
| This print is the property of Rotork Process Controls and is loaned in confidence subject to return. All rights to design or invention are reserved. | | SHT 2 OF 3 |
| | | M52-PS |



| | | | | | |
|---|-----------------|------------|--|---------------|--|
| | | | | | |
| A | INITIAL RELEASE | ECE | | 12APR18 | |
| REV | DESCRIPTION | DATE | | | |
| TOLERANCES UNLESS OTHERWISE SPECIFIED .XX = ±.02 XXX = ±.005 ANGULAR ±1° | | |  MILWAUKEE, WISCONSIN, USA | | TITLE : CMA 1500 & 3000 WIRING DIAGRAM |
| SCALE: NTS | | | | | FOR : 12V DC POWER OPERATION LOCAL CONTROLS, UPS, PROFIBUS |
| DRAWN: | PROD. DV. | PROD. ENG. | | | |
| ECE | | | | | |
| DATE: | DATE: | DATE: | | | |
| 12APR18 | | | | SHT 3 OF 3 | M52-PS |
| | | | This print is the property of Rotork Process Controls and is loaned in confidence subject to return. All rights to design or invention are reserved. | | |