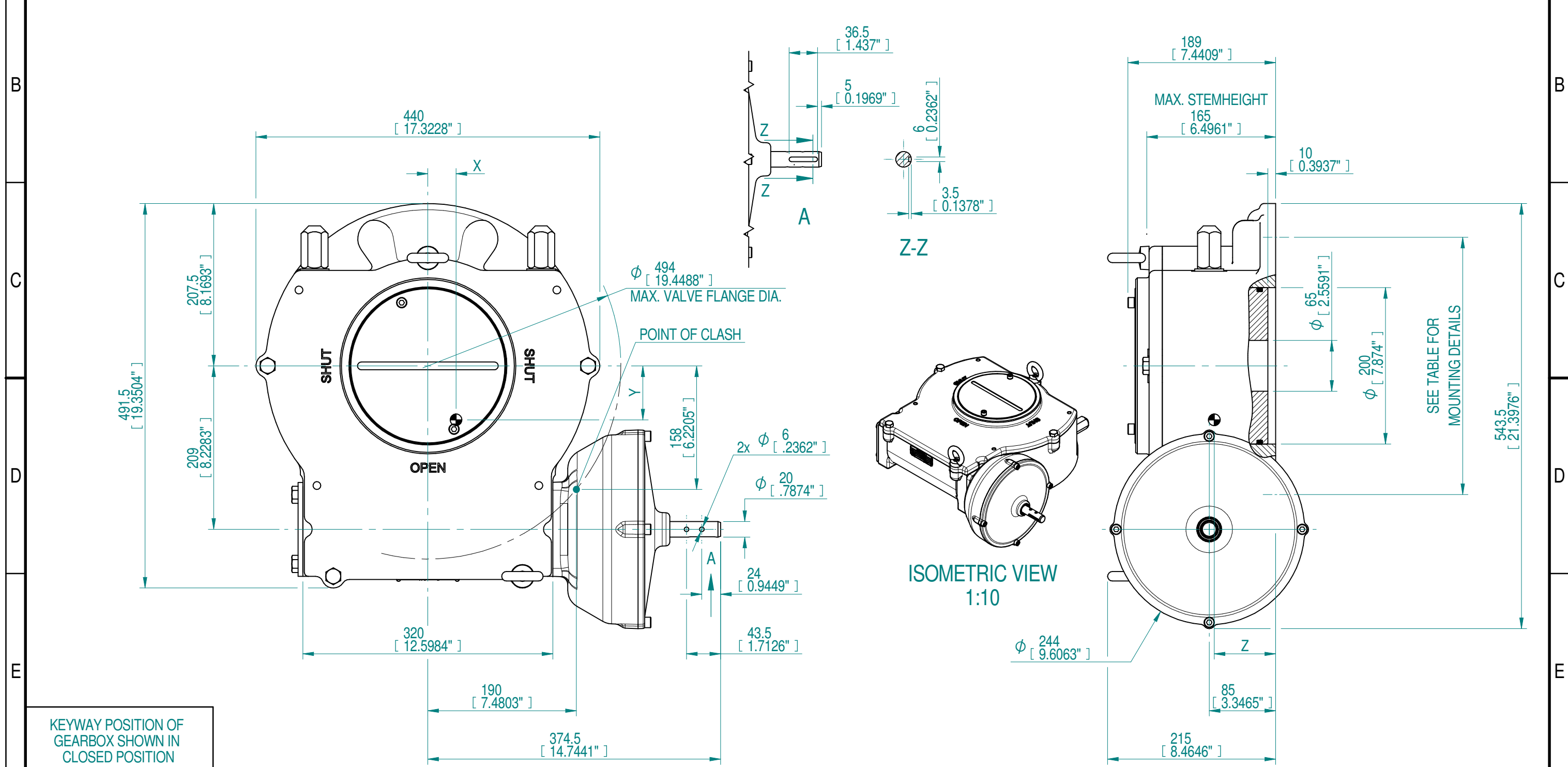
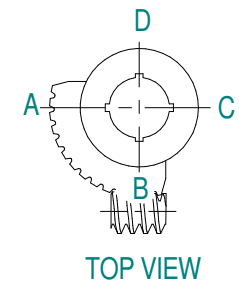


INPUT FLANGE DETAILS				MOUNTING HOLES - BOLT CIRCLE (OFF CENTRES)				STEM ACCEPTANCE IN ACCORDANCE TO STANDARD					
INPUT FLANGE	FLANGE O/DIA.	HOLE DETAILS (OFF CENTRES)	KEY DETAILS	ISO 5211 / MSS SP-101 MOUNTING OPTION	HOLE DETAILS (OFF CENTRES)	MAX OUTSIDE DIA. INCLUDING DRILLED HOLES	MIN INSIDE DIA. INCLUDING DRILLED HOLES	BORE MACHINED IN	STANDARD	MIN BORE	RECT. KEY MAX BORE	RECT. KEY SIZE	SQ BORE MAX
-	-	-	-	F25 (FA25)	8x M16* x 24 DEEP ON A Ø254P.C. (8x 5/8"UNC x 0.94" DEEP ON A 10"P.C.)	Ø395 (Ø15.55")	Ø204 (Ø8.03")	QUADRANT	DIN 6885	Ø65	Ø160	40 x 22	□ 115
			F30 (FA30)	8x M20* x 33 DEEP ON A Ø298P.C. (8x 3/4"UNC x 0.1.3" DEEP ON A 11.75"P.C.)	BS46				Ø2.56"	Ø6.29"	1-3/4 x 1-1/4	□ 4.52"	
			F35 (FA35)	8x M30* x 15 DEEP ON A Ø356P.C. (8x 1"UNC x 1.38" DEEP ON A 14"P.C.)									



KEYWAY POSITION OF GEARBOX SHOWN IN CLOSED POSITION



NOTES:
 1. * THREAD DEPTH DOES NOT MATCH ISO STANDARD
 2. CENTRE OF GRAVITY POSITION IS INDICATIVE FOR STANDARD BUILD WHEN IN POSITION SHOWN

RATIO	TURNS TO CLOSE	M.A.	WEIGHT EXCL. HW	MAX OUTPUT	MAX INPUT	X	Y	Z
729 : 1	182.25	210 ± 15%	157.4 kg 346.3 lbs.	26000 Nm 230120 lbf.in.	124 Nm 1096 lbf.in.	36.1 1.42"	69 2.72"	78.5 3.09"
DESCRIPTION			TORQUE		CENTRE OF GRAVITY			

AS PART OF CONTINUOUS PRODUCT DEVELOPMENT, ALL DETAILS SUBJECT TO CHANGE WITHOUT PRIOR NOTICE. FOR UP TO DATE DETAILS PLEASE VISIT www.rotork.com

 LOSSER - THE NETHERLANDS www.rotork.com	This drawing is confidential and is the property of Rotork Gears and must not be reproduced either wholly or partly. All rights in respect of patents, designs and copyrights are reserved. © 2018	Document Type GAD	Title GEARBOX A200SS-PR10 LEFT HANDED WITHOUT BORE AND PC D	
		 Dimensions in mm Scale 1:5	Drawing Number PUB01726	
Created robbin.goosen	17-5-2018	Sheet 1 of 2 Size A3		
Checked Henk Hoff	23-5-2018	Iss. 01		
Approved				