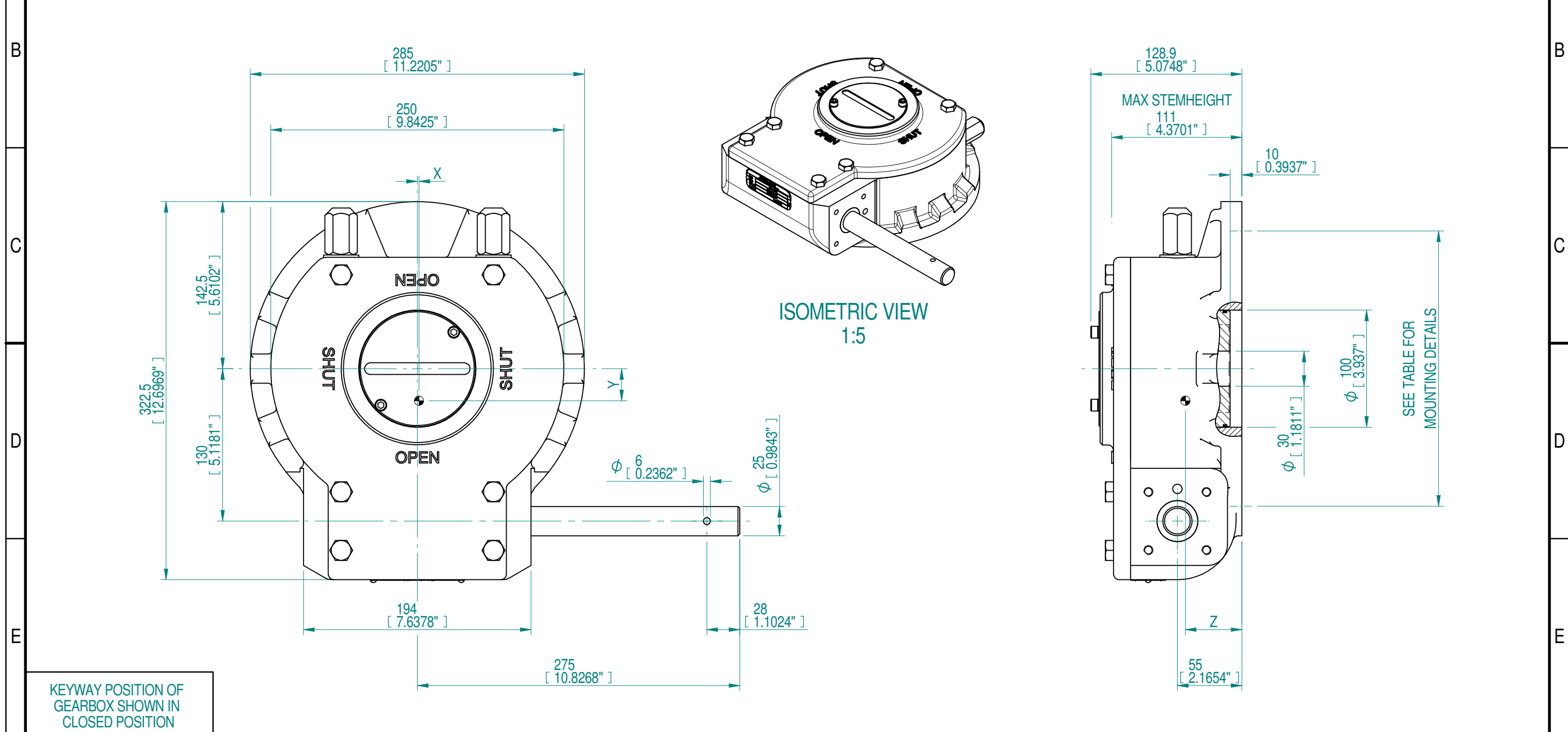


INPUT FLANGE DETAILS				MOUNTING HOLES - BOLT CIRCLE (OFF CENTRES)				STEM ACCEPTANCE IN ACCORDANCE TO STANDARD					
INPUT FLANGE	FLANGE O/DIA.	HOLE DETAILS (OFF CENTRES)	KEY DETAILS	ISO 5211 / MSS SP-101 MOUNTING OPTION	HOLE DETAILS (OFF CENTRES)	MAX OUTSIDE DIA. INCLUDING DRILLED HOLES	MIN INSIDE DIA. INCLUDING DRILLED HOLES	BORE MACHINED IN	STANDARD	MIN BORE	RECT. KEY MAX BORE	RECT. KEY SIZE	SQ BORE MAX
-	-	-	-	F12 (FA12)	4x M12* x 18 DEEP ON A Ø125P.C. (4x 1/2"UNC x 0.71" DEEP ON A 4.95"P.C.)	Ø272 (Ø10.71")	Ø104 (Ø4.09")	QUADRANT	DIN 6885	Ø30	Ø80	22 x 14	□ 60
				F14 (FA14)	4x M16* x 18 DEEP ON A Ø140P.C. (4x 5/8"UNC x 0.71" DEEP ON A 5.5"P.C.)				BS46	Ø1.18"	Ø3.0446"	7/8 x 5/8	□ 2.36"
				F16 (FA16)	4x M20* x 18 DEEP ON A Ø165P.C. (4x 3/4"UNC x 0.71" DEEP ON A 6.5"P.C.)				DIN 6885	-	Ø55	16 x 10	□ 46
				F25 (FA25)	8x M16* x 18 DEEP ON A Ø254P.C. (8x 5/8"UNC x 0.71" DEEP ON A 10"P.C.)				BS46	-	Ø2.1352"	5/8 x 7/16	□ 1.81"



DESCRIPTION	TORQUE	CENTRE OF GRAVITY
52 : 1	13	19 ± 15%
RATIO	URNS TO CLOSE	M.A.
	WEIGHT EXCL. HW	
	MAX OUTPUT	MAX INPUT
	X	Y
	Z	

AS PART OF CONTINUOUS PRODUCT DEVELOPMENT, ALL DETAILS SUBJECT TO CHANGE WITHOUT PRIOR NOTICE. FOR UP TO DATE DETAILS PLEASE VISIT www.rotork.com

rotork Gears
 LOSSER - THE NETHERLANDS
www.rotork.com

This drawing is confidential and is the property of Rotork Gears and must not be reproduced either wholly or partly. All rights in respect of patents, designs and copyrights are reserved. © 2018

Document Type	GAD	Title	GEARBOX AB1950SS LEFT HANDED WITHOUT BORE AND PC
Created	robbin.goosen	4-7-2018	Drawing Number
Checked	Henk Hoff	4-7-2018	PUB00208
Approved			Sheet 1 of 1 Size A3

Rev.05