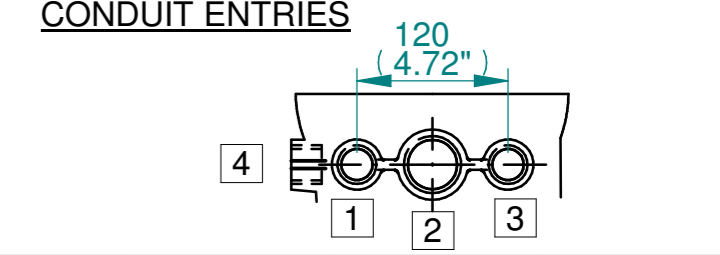
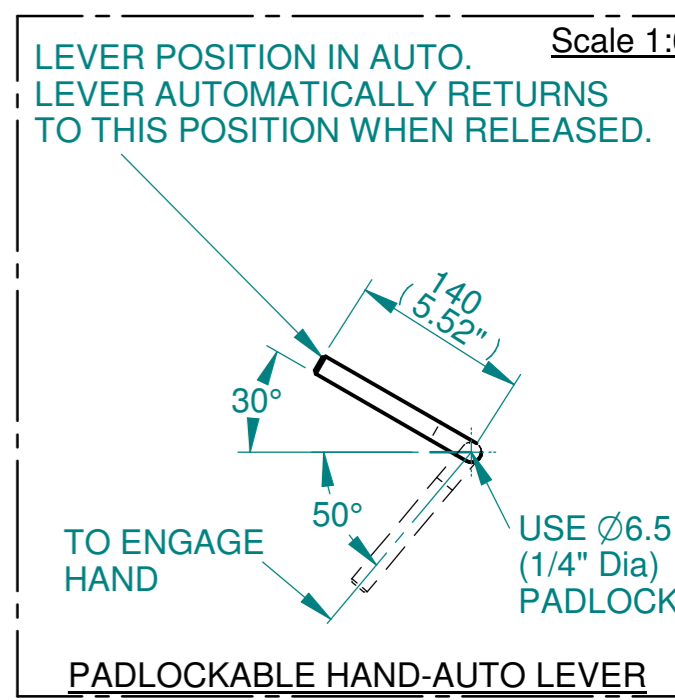
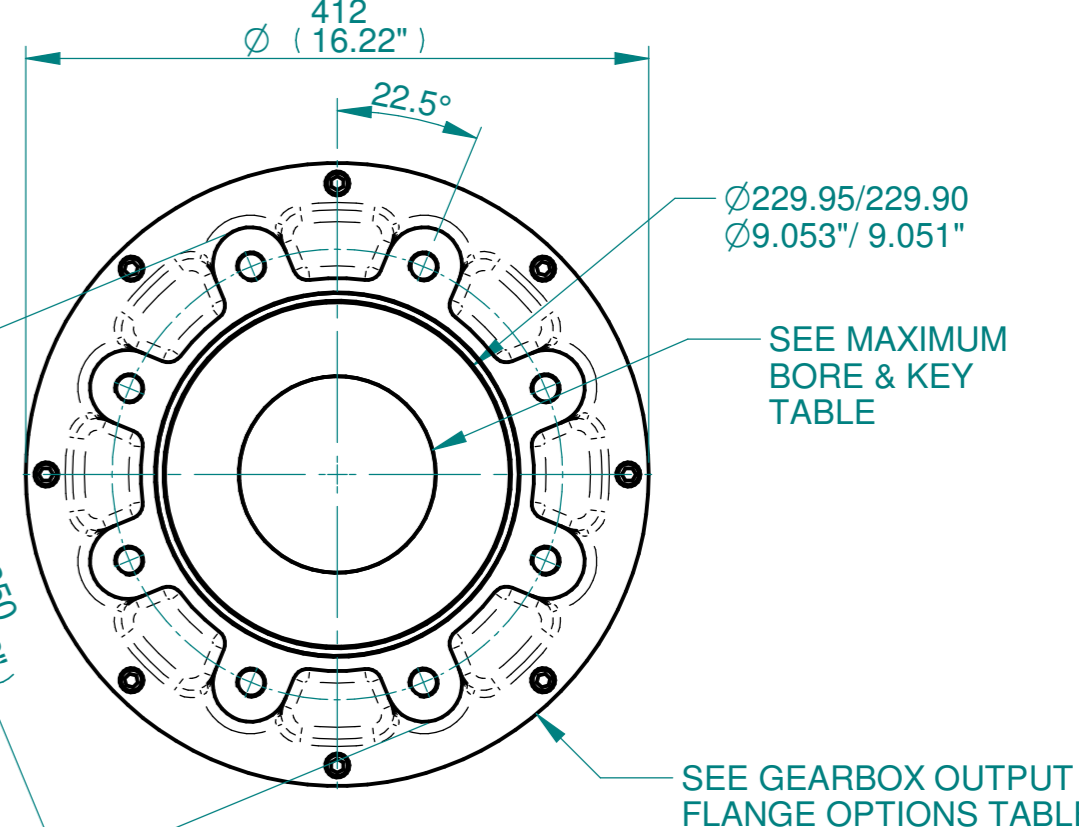
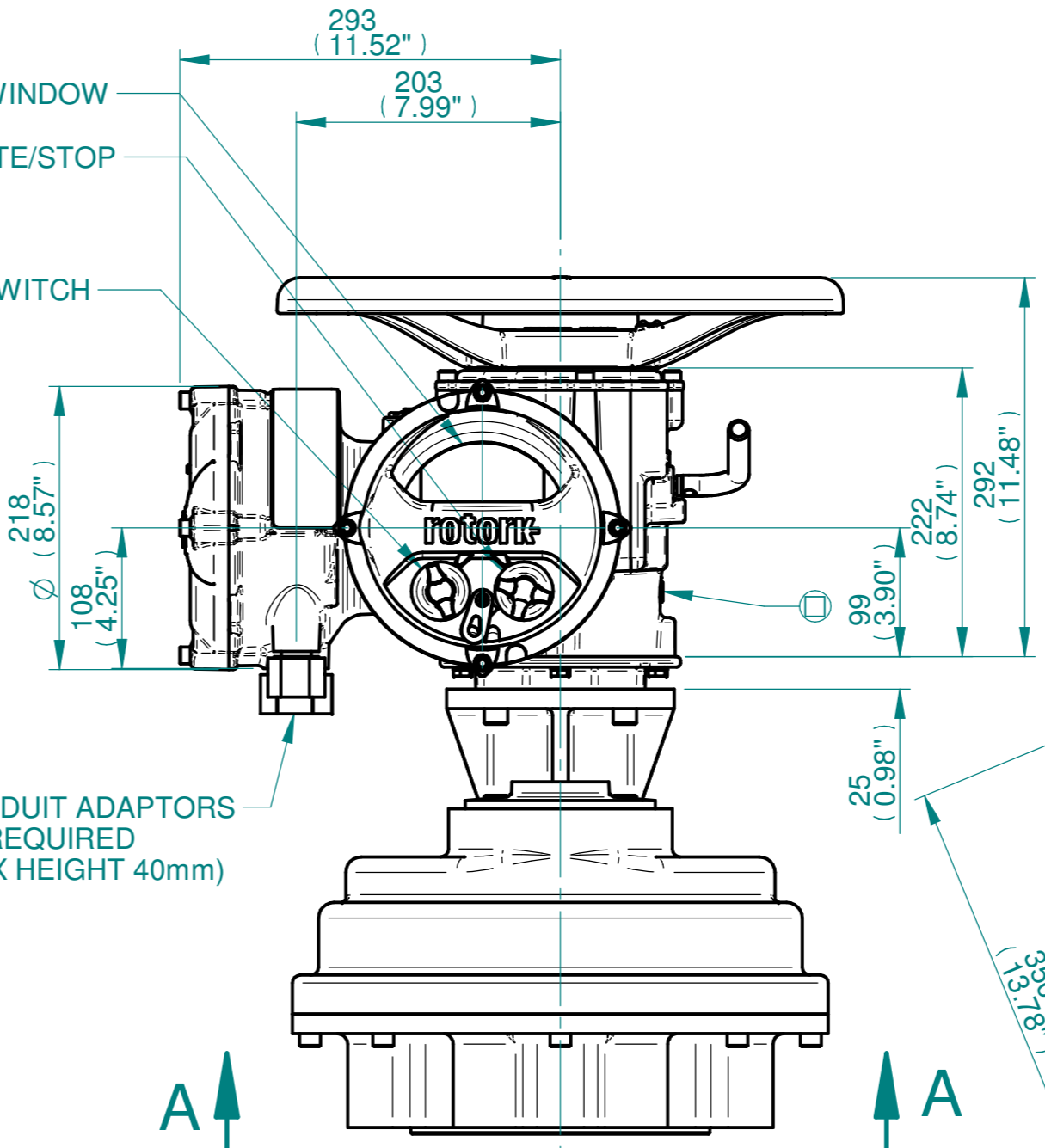
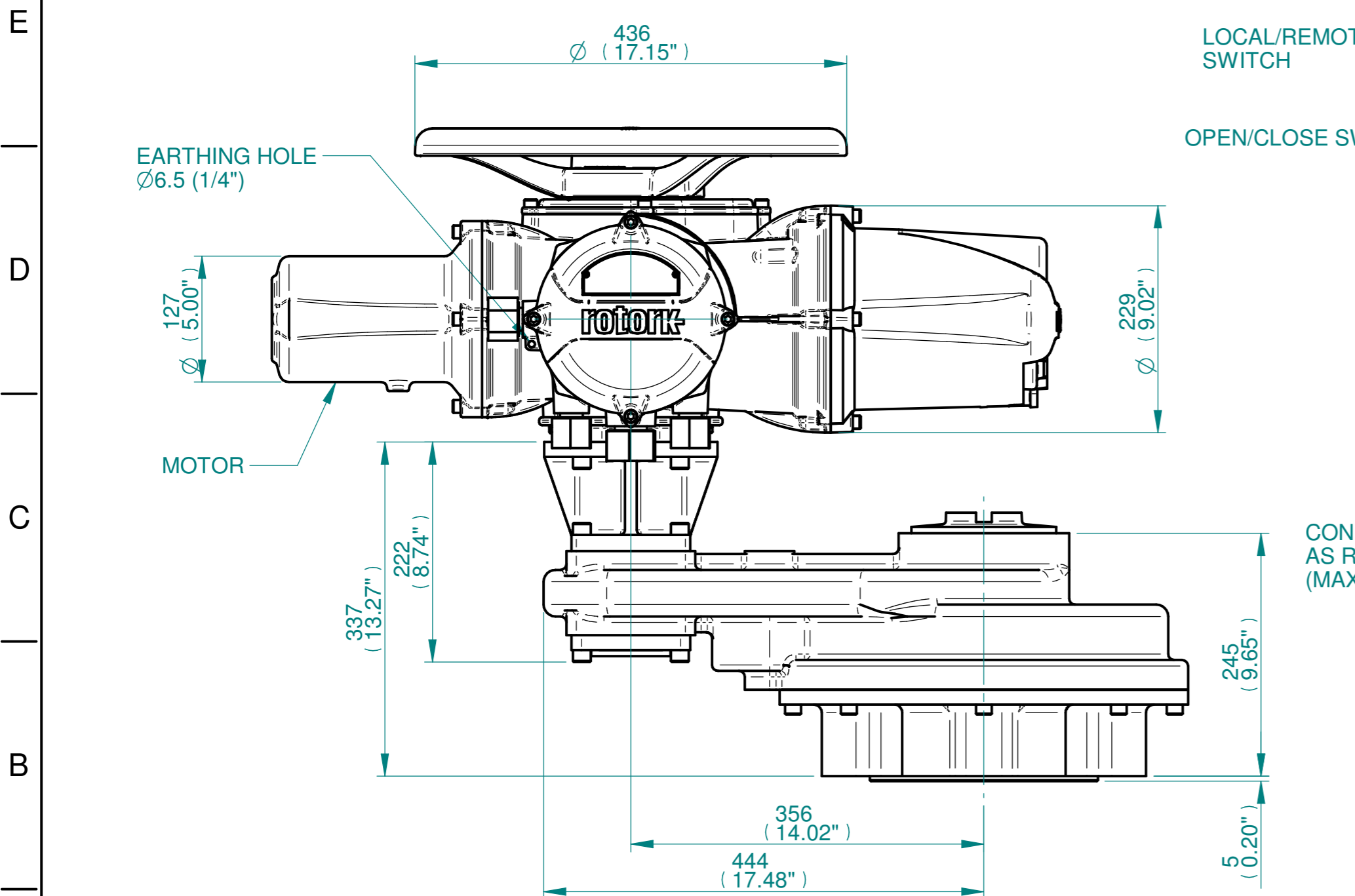


ISOMETRIC VIEW
1:10

NOTES:
 : DIMENSIONS WITH "*" INDICATE COVER REMOVAL ALLOWANCE
 : ELECTRONICS COVER OPTION "**" WILL VARY DEPENDING ON CONFIGURATION
 : NETT WEIGHT = 174kg/383lbs
 : = OIL FILLER/DRAIN PLUG
 : THE INTERFACE PROVIDED FOR MOUNTING THE ACTUATOR OR SECOND STAGE GEARBOX ONTO THE VALVE SHOULD CONFORM TO GOOD ENGINEERING PRACTICES, ENSURING ADEQUATELY TOLERANCED LIMITS FOR PARALLELISM, PERPENDICULARITY AND CONCENTRICITY.
 : ROTORK CANNOT BE HELD LIABLE FOR DAMAGE TO OUR EQUIPMENT CAUSED BY EXCESSIVE LOADING FROM COVER TUBES. (SEE ALSO PUB000-124)



	Hole 1	Hole 2	Hole 3	Hole 4
Size	As Required	As Required	As Required	As Required
Plugged	As Required	As Required	As Required	As Required
Gland	As Required	As Required	As Required	As Required



Actuator Size: IQ19/20/25, IS11		Gearbox output flange options								Maximum Bore & Key			
rotork www.rotork.com Rotork Controls Limited Bath, BA1 3JQ, England. Telephone 01225-733200	Title IQ19/20/25, TOP HANDWHEEL, IS11, F30, FA30, Ratios 4:1,6:1,8:1,10:1,12:1 15:1 Installation Details Drawn DH Checked JBA Date FEB 19 Ref SALES Project Ref QUOTATION	Designation	F30	-	-	-	FA30	-	-	-	Key form	Ø Bore	Key size
		No. Holes	8	-	-	-	8	-	-	-	Rectangle (BS4235)	96	28 x 16
		Hole size	M20	-	-	-	3/4" UNC	-	-	-	-	-	-
		PCD	298	-	-	-	11.73"	-	-	-	-	-	-

3D Models are available in various formats under the same drawing number

Issue	Description
1	FIRST ISSUE

Scale: 1:5 THIRD ANGLE PROJECTION

Drawing Number	Issue No	Sheet No
I12THWIS11STD	1	1 of 1