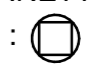
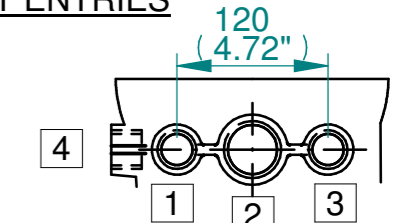
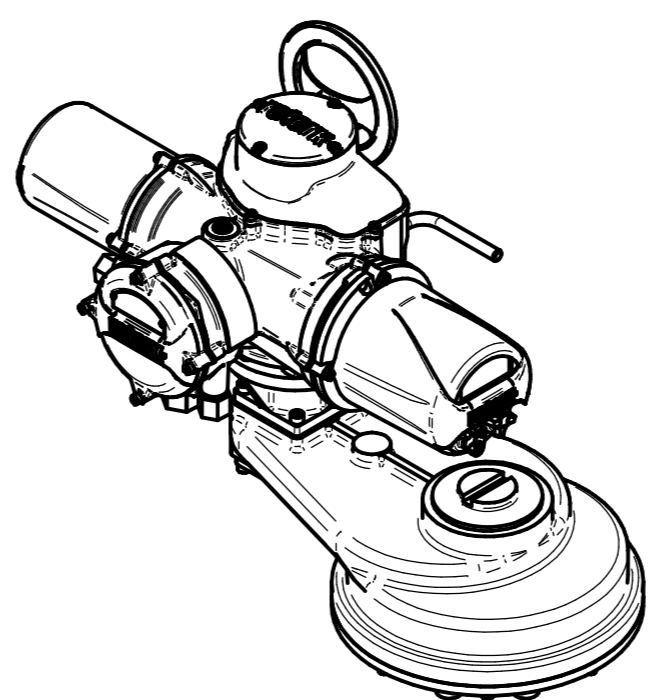


NOTES:
 :DIMENSIONS WITH "*" INDICATE COVER REMOVAL ALLOWANCE
 :ELECTRONICS COVER OPTION "****" WILL VARY DEPENDING ON CONFIGURATION
 :NETT WEIGHT = 178kg/392lbs
 :  = OIL FILLER/DRAIN PLUG
 :THE INTERFACE PROVIDED FOR MOUNTING THE ACTUATOR OR SECOND STAGE GEARBOX ONTO THE VALVE SHOULD CONFORM TO GOOD ENGINEERING PRACTICES, ENSURING ADEQUATELY TOLERANCED LIMITS FOR PARALLELISM, PERPENDICULARITY AND CONCENTRICITY.
 :ROTORK CANNOT BE HELD LIABLE FOR DAMAGE TO OUR EQUIPMENT CAUSED BY EXCESSIVE LOADING FROM COVER TUBES. (SEE ALSO PUB000-124)

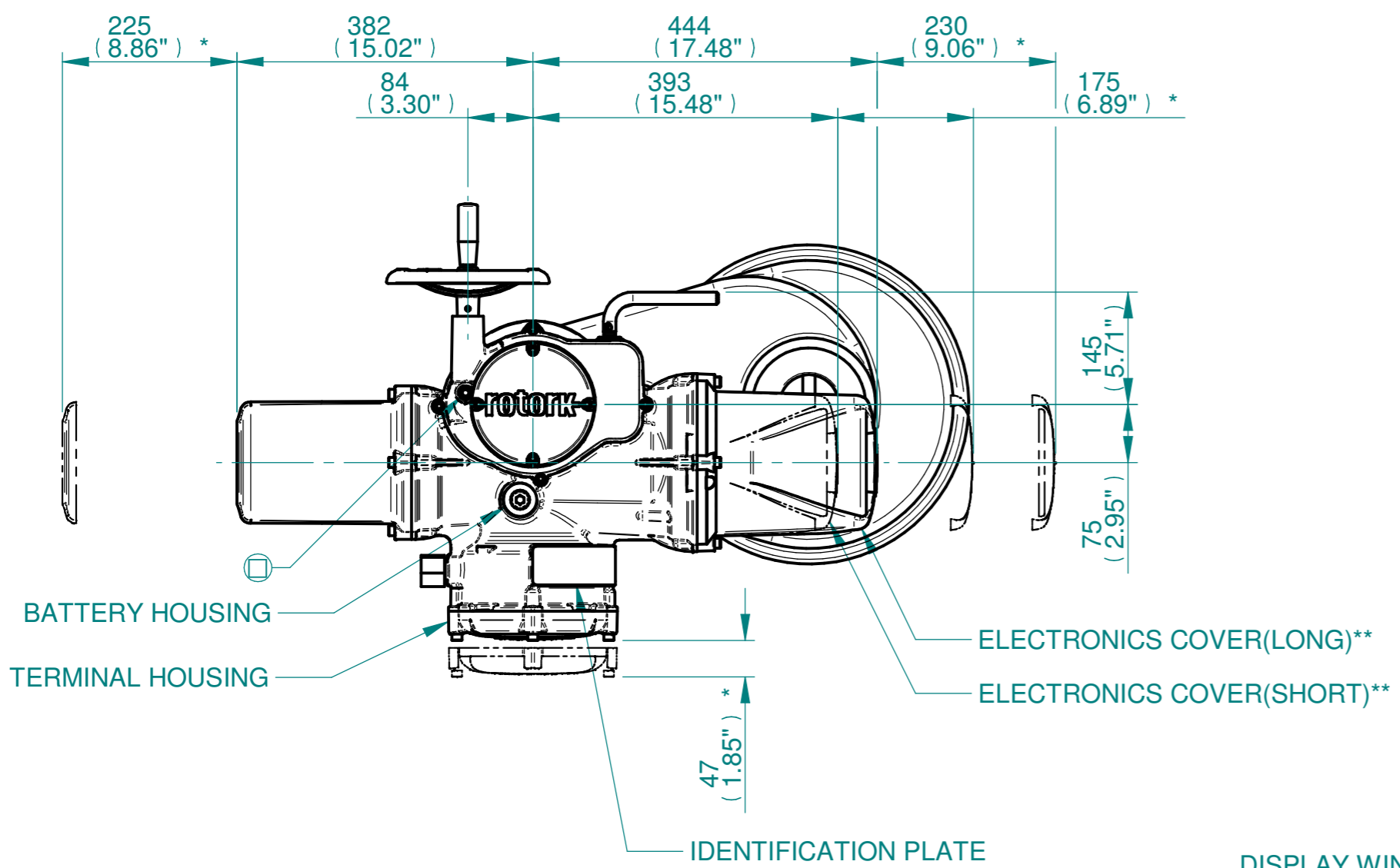
CONDUIT ENTRIES



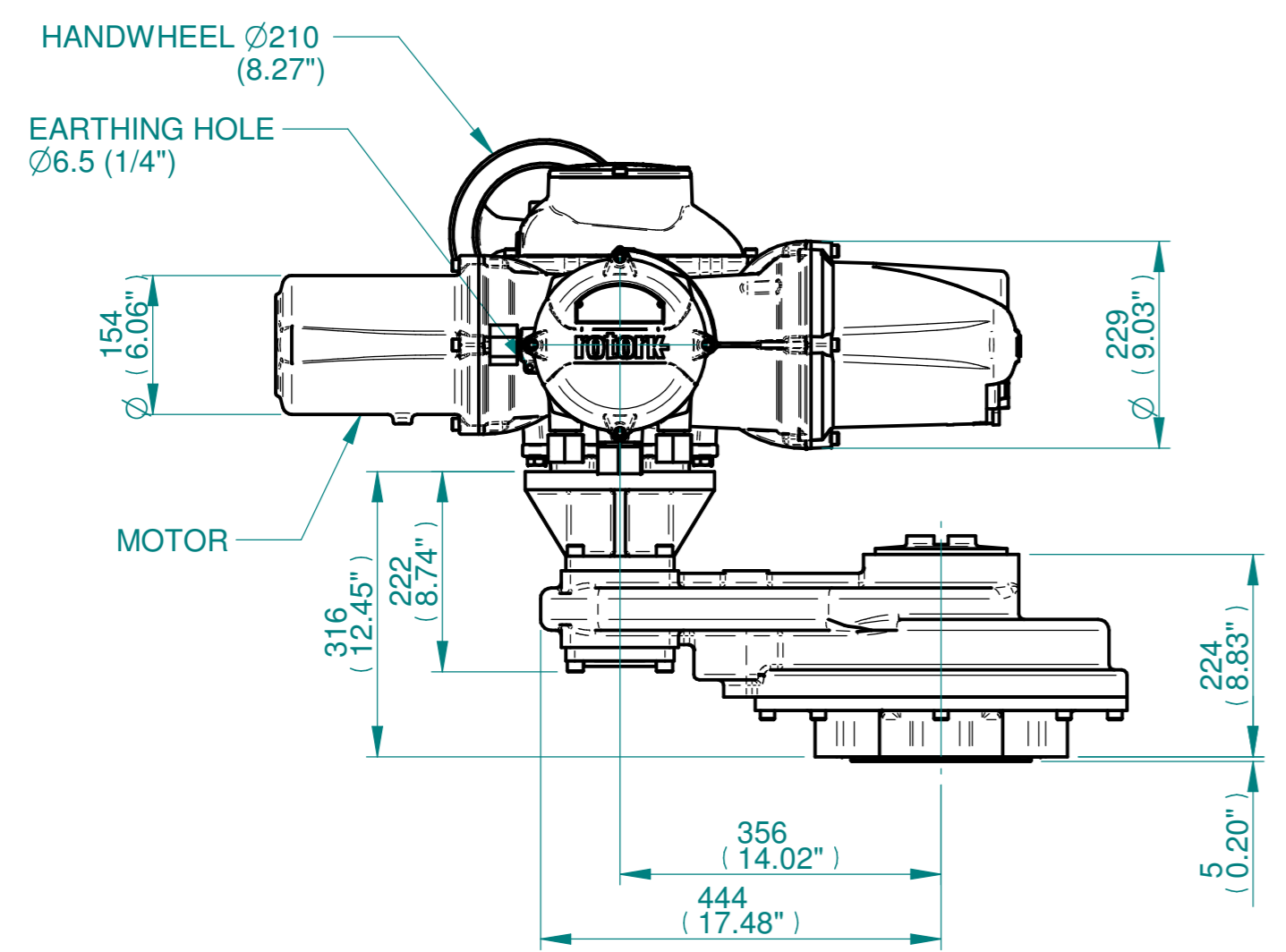
	Hole 1	Hole 2	Hole 3	Hole 4
Size	As Required	As Required	As Required	As Required
Plugged	As Required	As Required	As Required	As Required
Gland	As Required	As Required	As Required	As Required



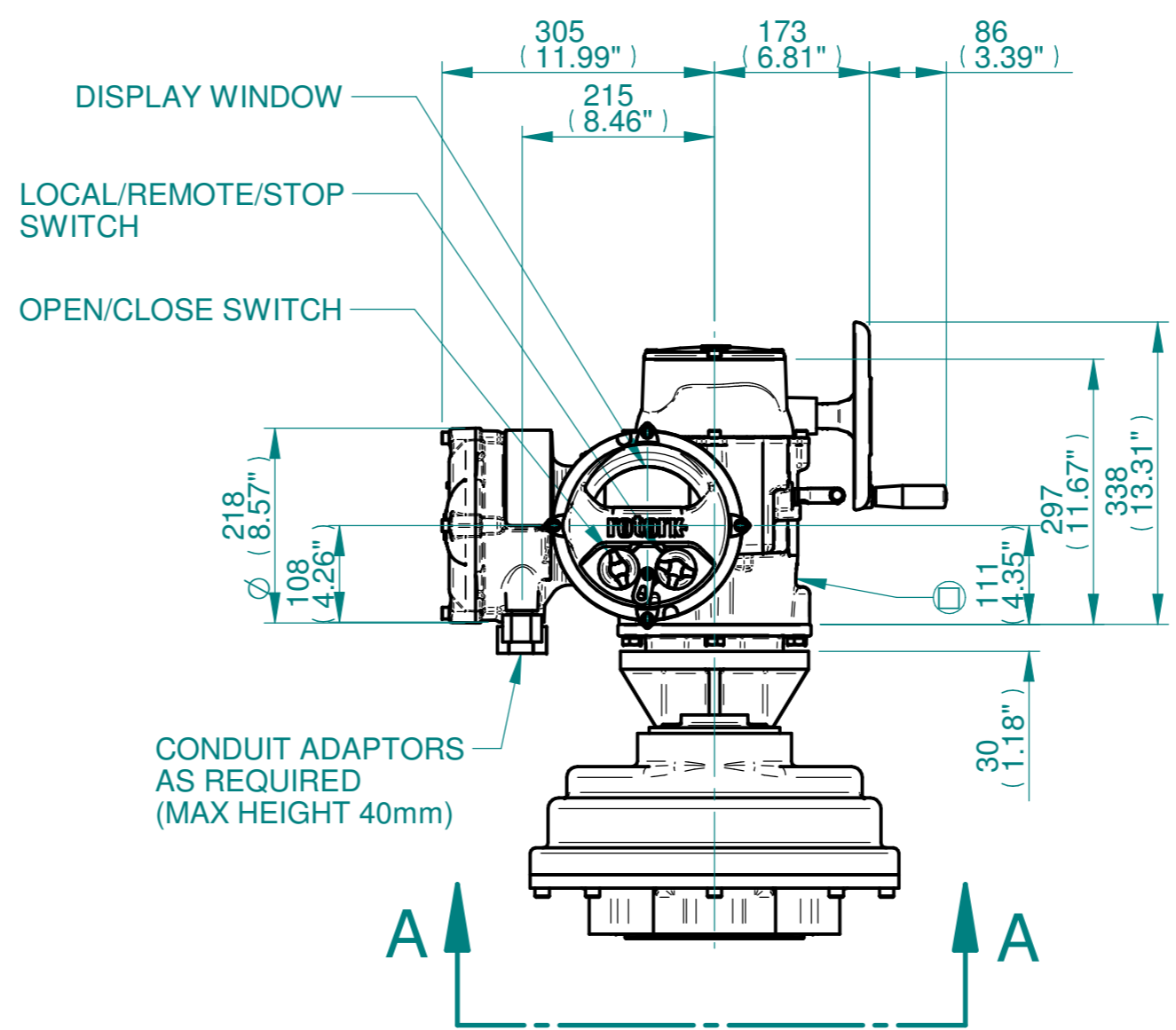
**ISOMETRIC VIEW
1:10**



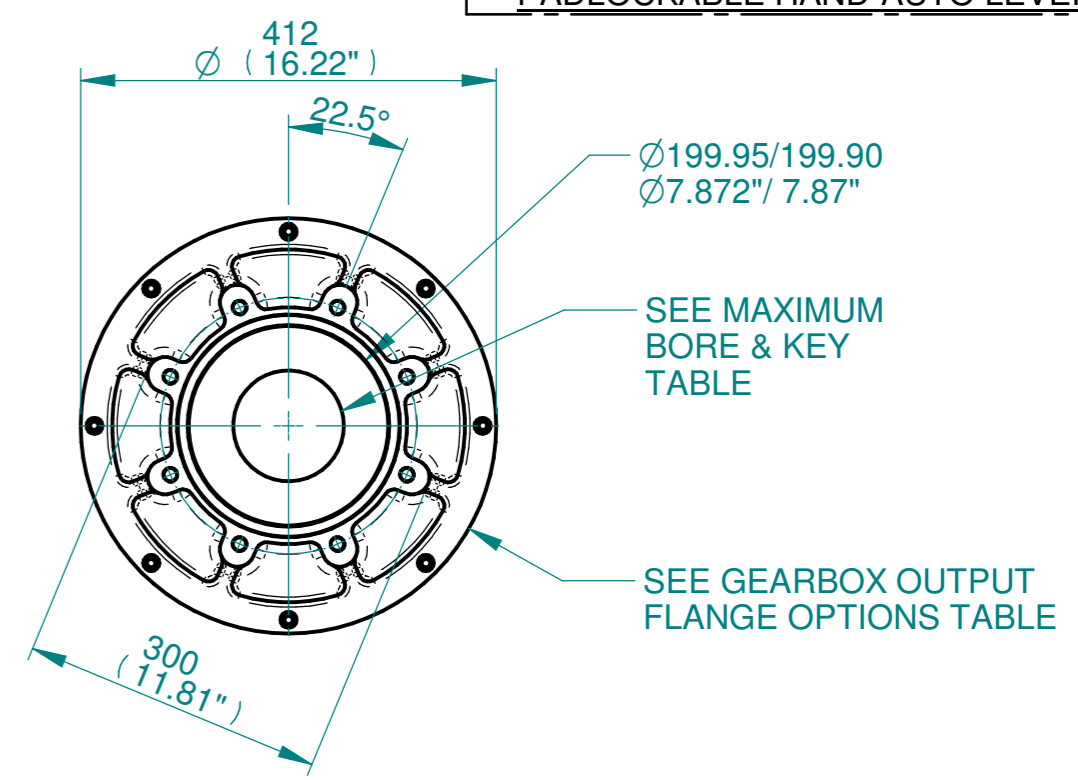
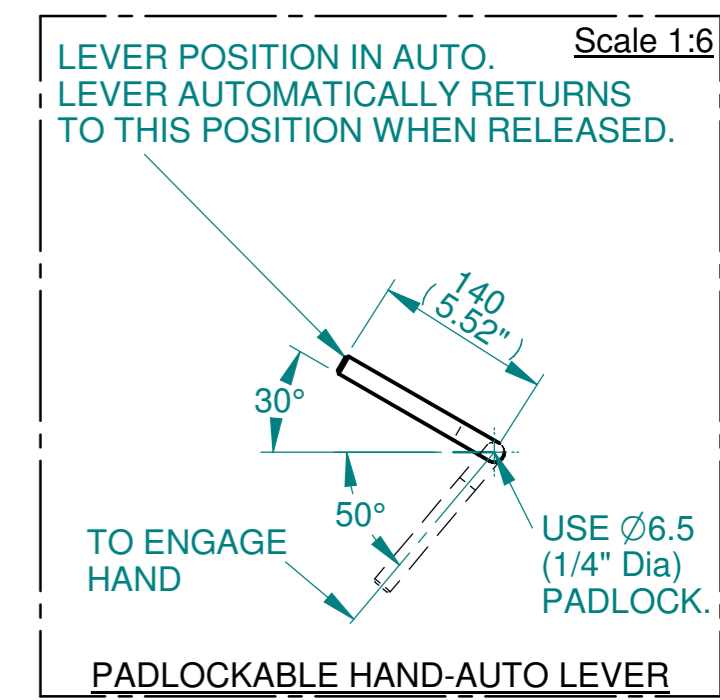
BATTERY HOUSING
 TERMINAL HOUSING
 ELECTRONICS COVER(LONG)**
 ELECTRONICS COVER(SHORT)**
 IDENTIFICATION PLATE



HANDWHEEL $\varnothing 210$ (8.27")
 EARTHING HOLE $\varnothing 6.5$ (1/4")
 MOTOR



DISPLAY WINDOW
 LOCAL/REMOTE/STOP SWITCH
 OPEN/CLOSE SWITCH
 CONDUIT ADAPTORS AS REQUIRED (MAX HEIGHT 40mm)



VIEW A-A

3D Models are available in various formats under the same drawing number



Actuator Size: IQ35, IS10		Gearbox output flange options								Maximum Bore & Key			
Title	IQ35, SIDE HANDWHEEL, IS10, F25, FA25, Ratios 4:1,6:1,8:1,10:1,12:1 15:1 Installation Details	Designation	F25	-	-	-	FA25	-	-	-	Key form	\varnothing Bore	Key size
Drawn	DH	No. Holes	8	-	-	-	8	-	-	-	Rectangle (BS4235)	76	22 x 14
Checked	JBA	Hole size	M16	-	-	-	5/8" UNC	-	-	-	-	-	-
Date	FEB 19	PCD	254	-	-	-	10"	-	-	-	-	-	-
Ref	SALES	Project Ref	QUOTATION	-	-	-	-	-	-	-	-	-	-

Issue	Description
1	FIRST ISSUE
Scale: 1:7.5	
THIRD ANGLE PROJECTION	
A2	Drawing Number Issue No Sheet No
I13SHWIS10STD	1 1 of 1