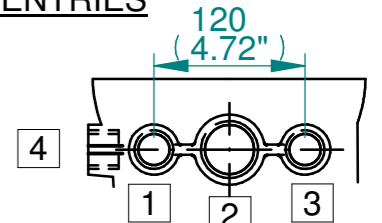


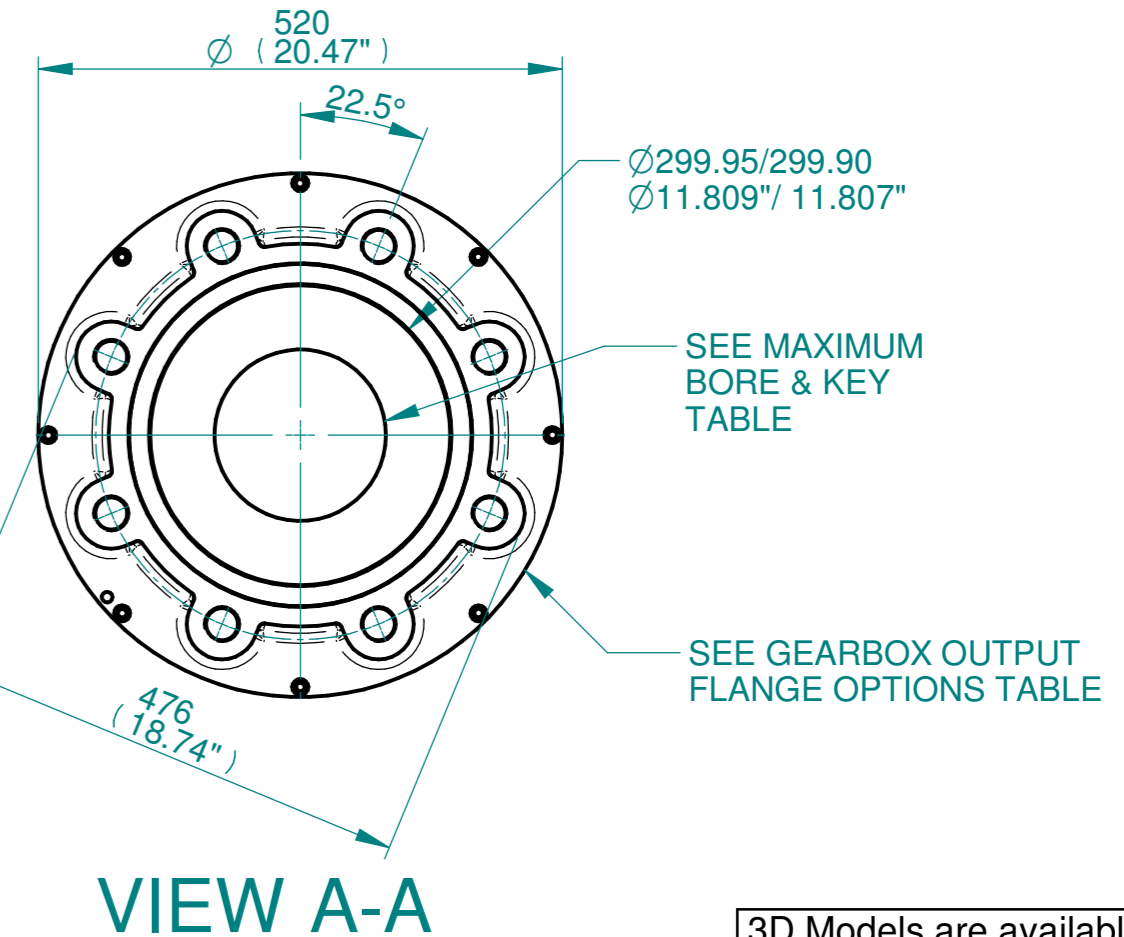
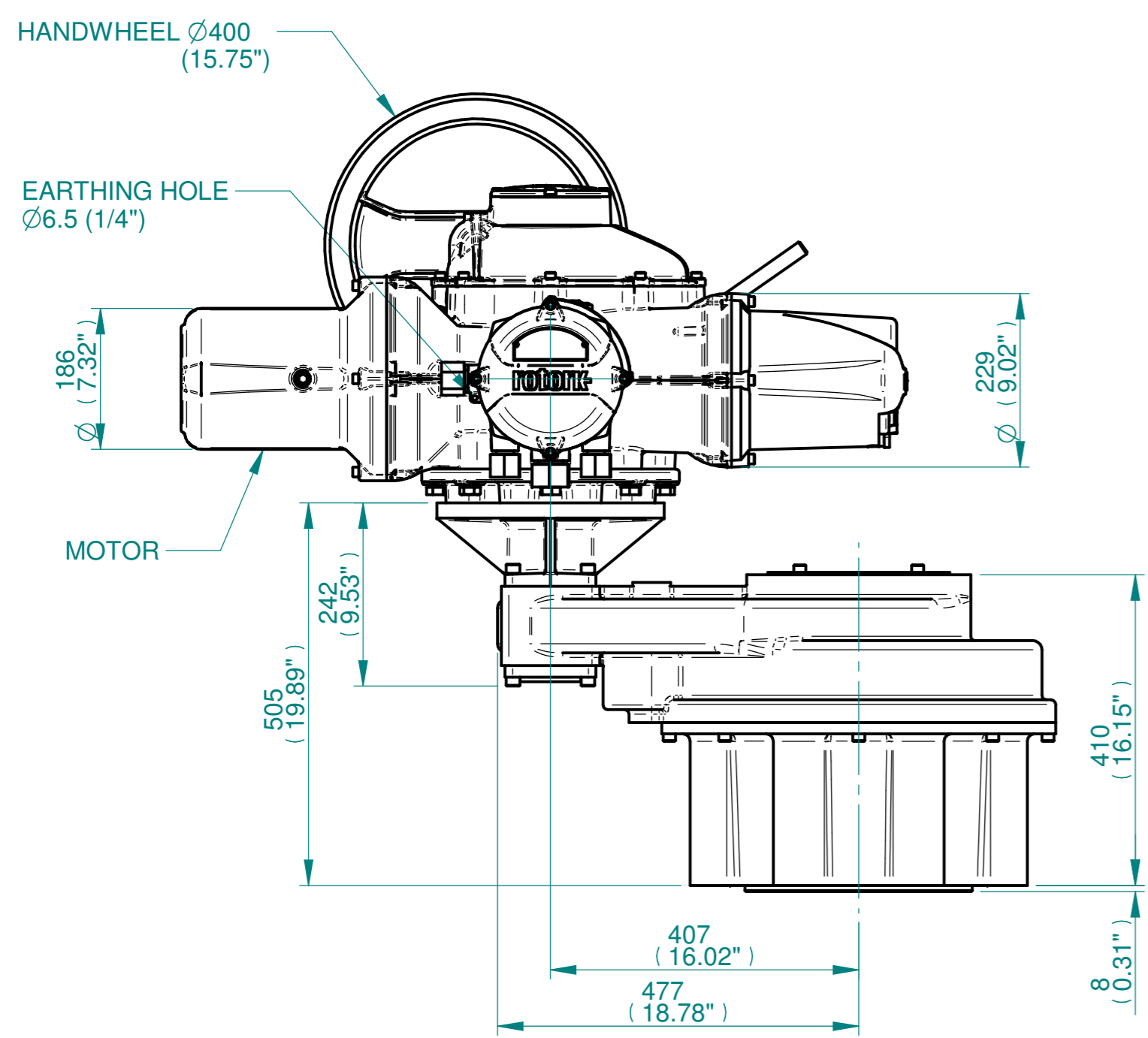
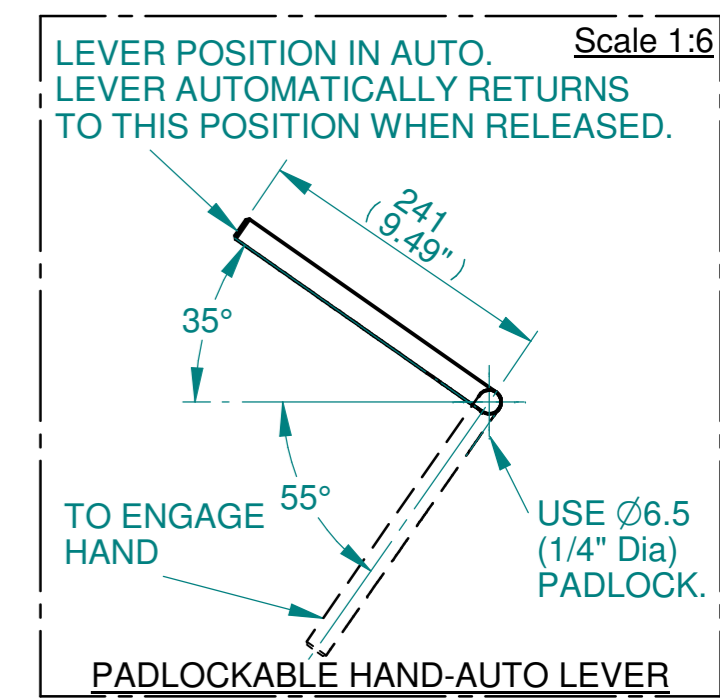
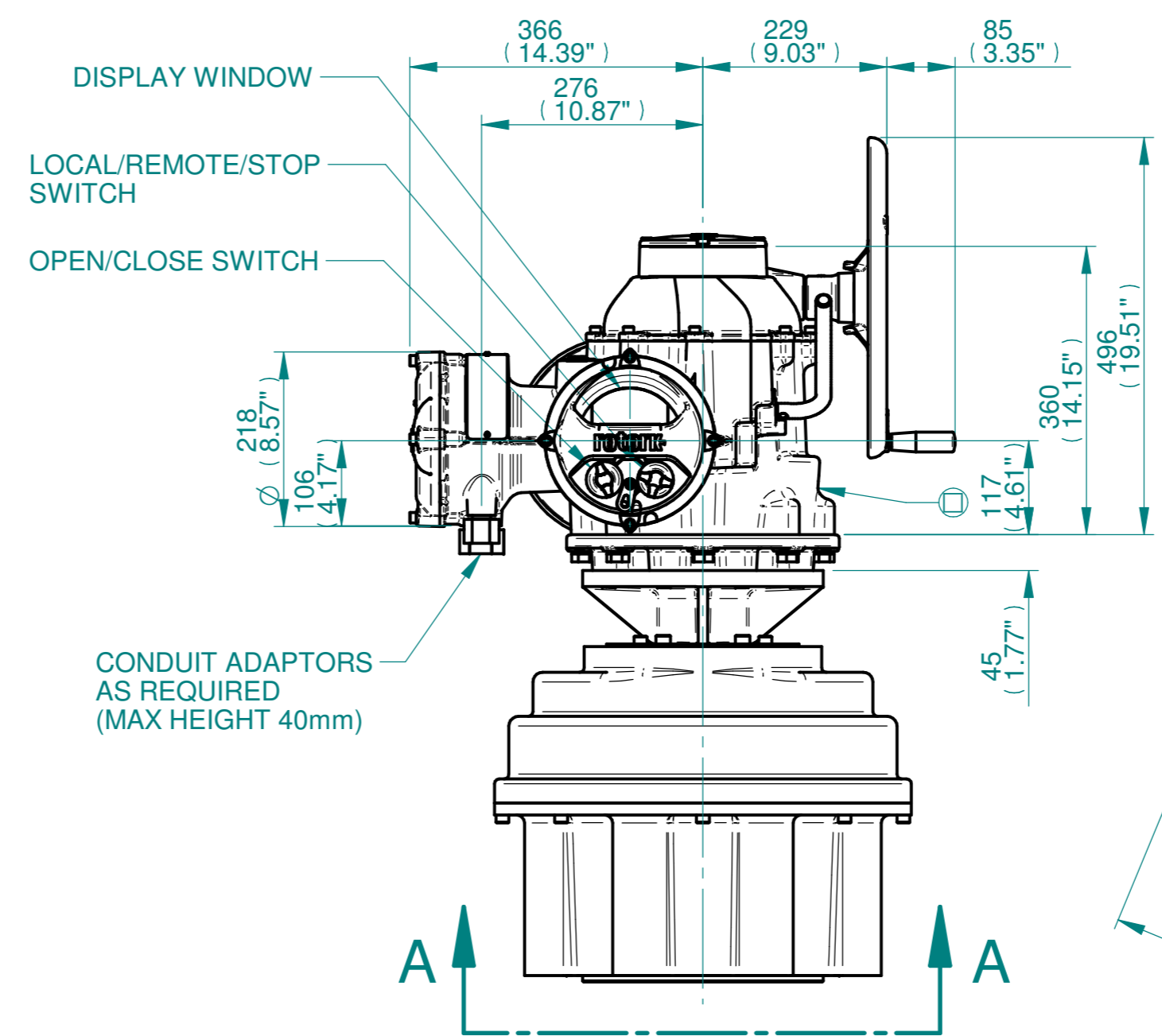
NOTES:
 :DIMENSIONS WITH "*" INDICATE COVER REMOVAL ALLOWANCE
 :NETT WEIGHT = 490kg/1080lbs
 : = OIL FILLER/DRAIN PLUG
 :THE INTERFACE PROVIDED FOR MOUNTING THE ACTUATOR OR SECOND STAGE GEARBOX ONTO THE VALVE SHOULD CONFORM TO GOOD ENGINEERING PRACTICES, ENSURING ADEQUATELY TOLERANCED LIMITS FOR PARALLELISM, PERPENDICULARITY AND CONCENTRICITY.
 :ROTORK CANNOT BE HELD LIABLE FOR DAMAGE TO OUR EQUIPMENT CAUSED BY EXCESSIVE LOADING FROM COVER TUBES. (SEE ALSO PUB000-124)

CONDUIT ENTRIES



	Hole 1	Hole 2	Hole 3	Hole 4
Size	As Required	As Required	As Required	As Required
Plugged	As Required	As Required	As Required	As Required
Gland	As Required	As Required	As Required	As Required

ISOMETRIC VIEW 1:10



3D Models are available in various formats under the same drawing number

Actuator Size: IQ40, IS14		Gearbox output flange options								Maximum Bore & Key			
Title	IQ40, SIDE HANDWHEEL, IS14, F40, FA40, Ratios 8:1,10:1,12:1 & 15:1 Installation Details	Designation	F40	-	-	-	FA40	-	-	-	Key form	Ø Bore	Key size
No. Holes		No. Holes	8	-	-	-	8	-	-	-	Rectangle (BS4235)	130	32 x 18
Hole size		Hole size	M36	-	-	-	11/4" UNC	-	-	-			
PCD		PCD	406	-	-	-	16"	-	-	-			

Issue	Description
1	FIRST ISSUE

Scale: 1:7.5 THIRD ANGLE PROJECTION

Drawing Number	Issue No	Sheet No
I14SHWIS14STD	1	1 of 1

rotork
 www.rotork.com
 Rotork Controls Limited
 Bath, BA1 3JQ, England.
 Telephone 01225-733200

H
G
F
E
D
C
B
A

1 2 3 4 5 6 7 8 9 10 11 12