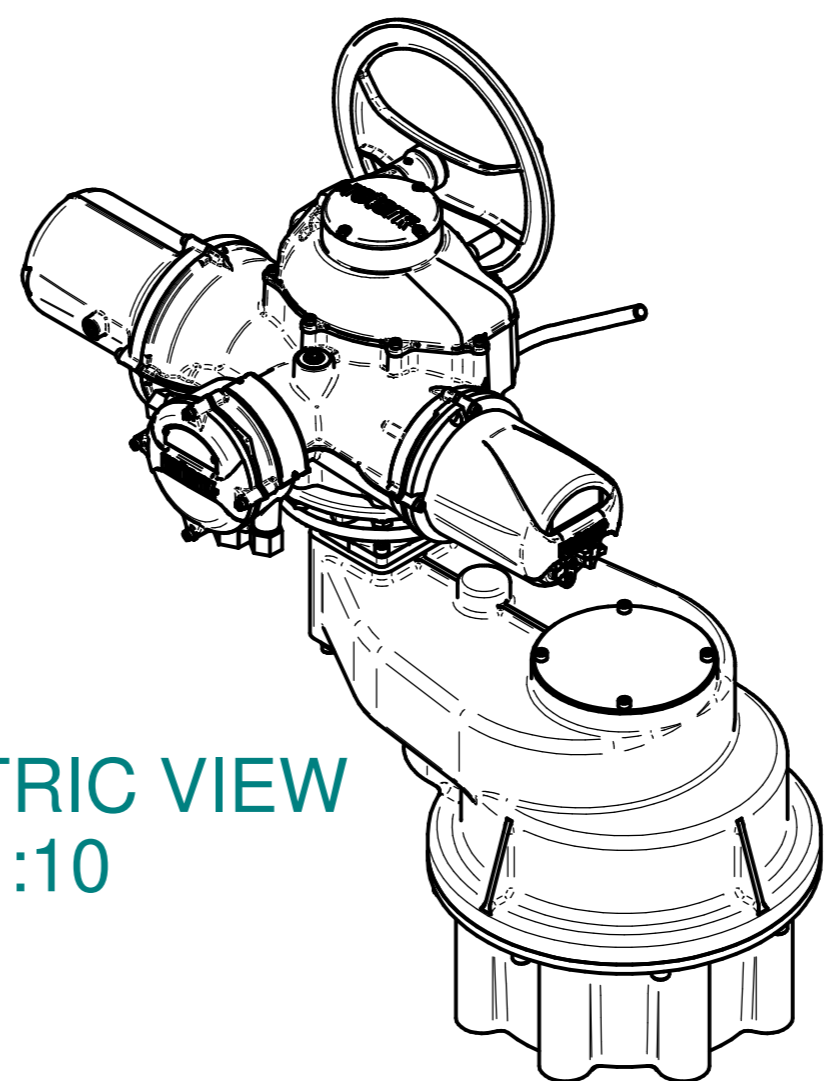

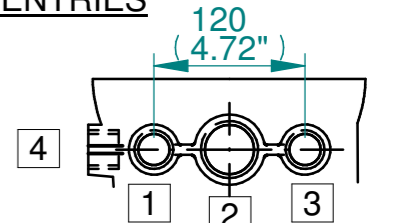


ISOMETRIC VIEW
1:10

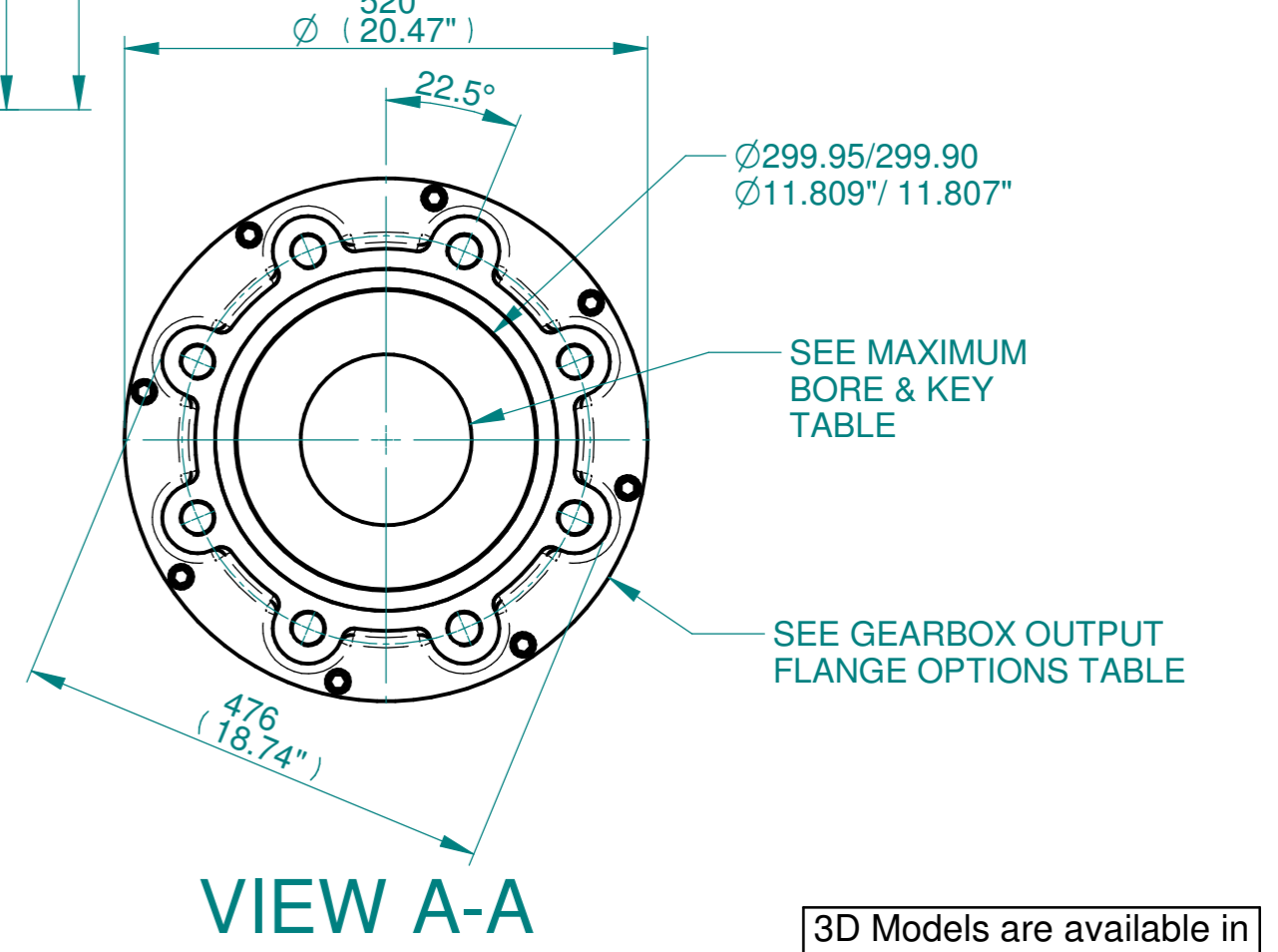
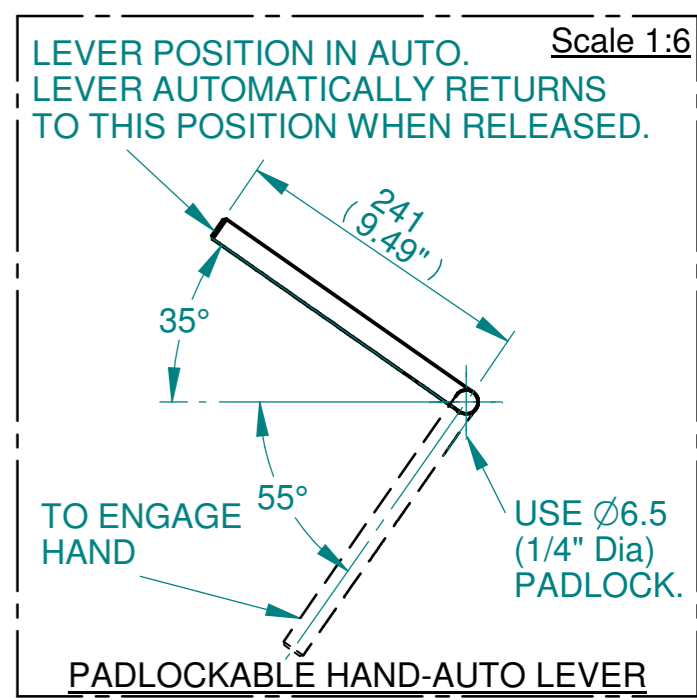
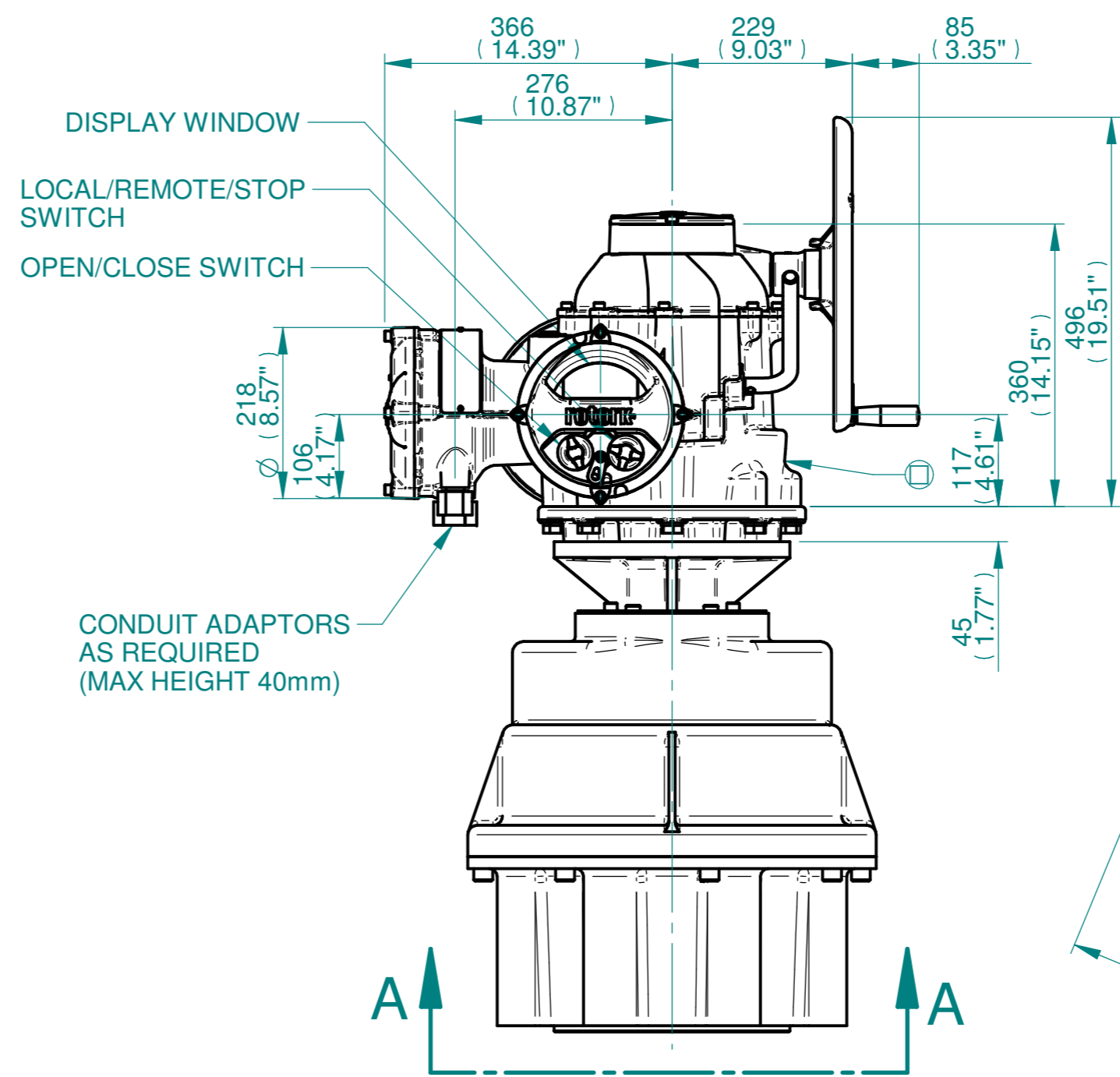
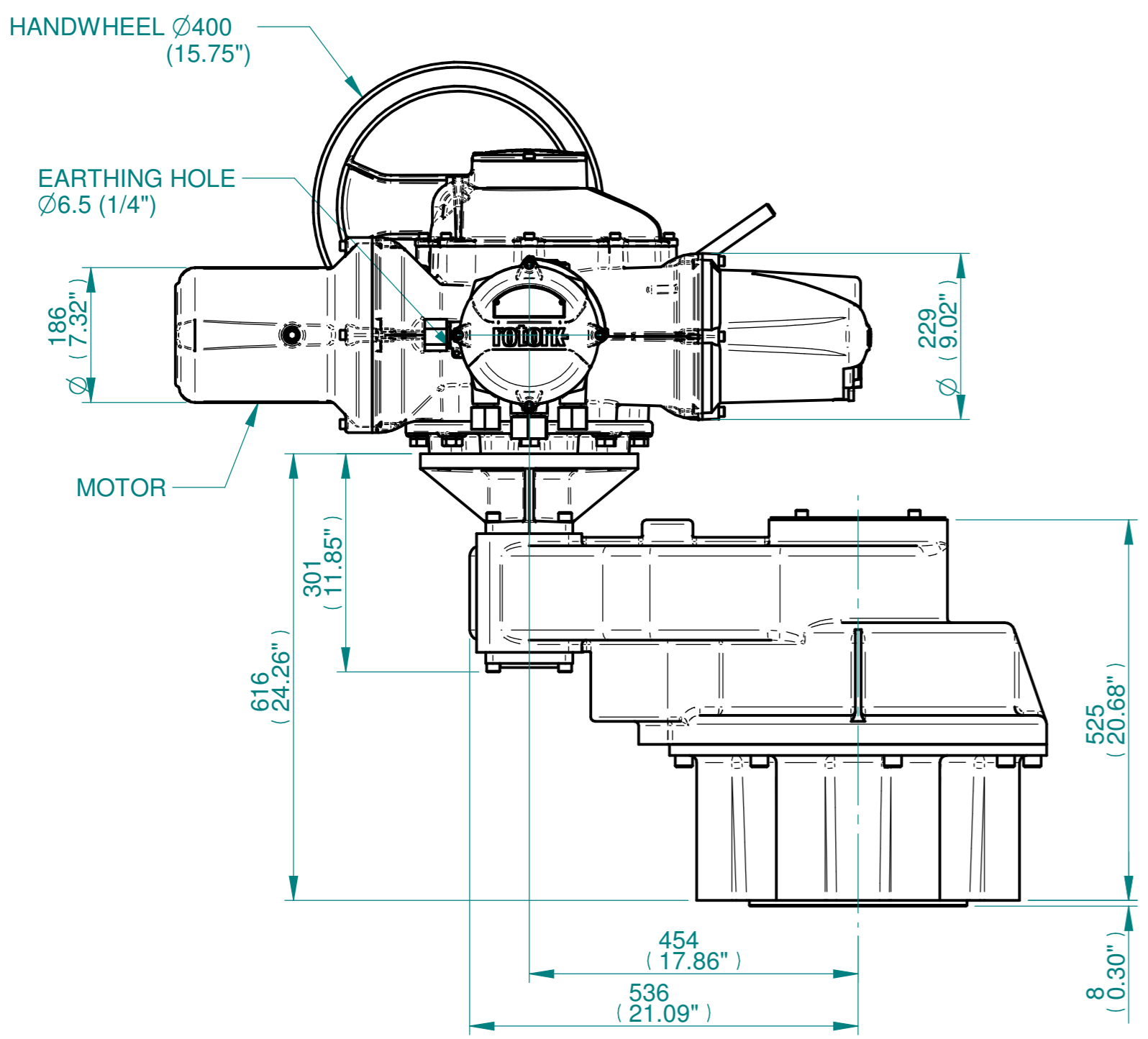


NOTES:
 :DIMENSIONS WITH "*" INDICATE COVER REMOVAL ALLOWANCE
 :NETT WEIGHT = 545kg/1201lbs
 :  = OIL FILLER/DRAIN PLUG
 :THE INTERFACE PROVIDED FOR MOUNTING THE ACTUATOR OR SECOND STAGE GEARBOX ONTO THE VALVE SHOULD CONFORM TO GOOD ENGINEERING PRACTICES, ENSURING ADEQUATELY TOLERANCED LIMITS FOR PARALLELISM, PERPENDICULARITY AND CONCENTRICITY.
 :ROTORK CANNOT BE HELD LIABLE FOR DAMAGE TO OUR EQUIPMENT CAUSED BY EXCESSIVE LOADING FROM COVER TUBES. (SEE ALSO PUB000-124)

CONDUIT ENTRIES



	Hole 1	Hole 2	Hole 3	Hole 4
Size	As Required	As Required	As Required	As Required
Plugged	As Required	As Required	As Required	As Required
Gland	As Required	As Required	As Required	As Required



3D Models are available in various formats under the same drawing number

Actuator Size: IQ40, IS16		Gearbox output flange options								Maximum Bore & Key			
Title IQ40, SIDE HANDWHEEL, IS16, F40, FA40, Ratios 10:1, 12:1 & 15:1 Installation Details	Designation	F40	-	-	-	-	FA40	-	-	-	Key form	Ø Bore	Key size
	No. Holes	8	-	-	-	-	8	-	-	-	Rectangle (BS4235)	130	32 x 18
	Hole size	M36	-	-	-	-	11/4" UNC	-	-	-	-	-	-
	PCD	406	-	-	-	-	16"	-	-	-	-	-	-
Drawn DH	Checked JBA	Date MARCH 19											
Ref SALES	Project Ref QUOTATION												

Issue	Description
1	FIRST ISSUE
Scale: 1:7.5	
THIRD ANGLE PROJECTION	
A2	Drawing Number Issue No Sheet No
I14SHWIS16STD	1 1 of 1

rotork
www.rotork.com
Rotork Controls Limited
Bath, BA1 3JQ, England.
Telephone 01225-733200