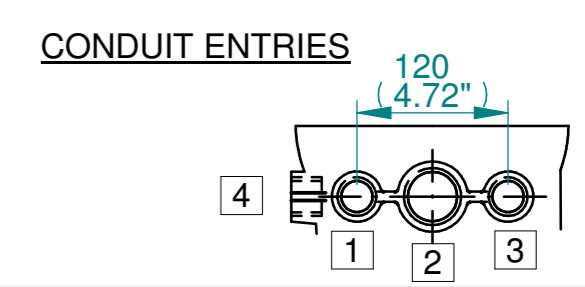
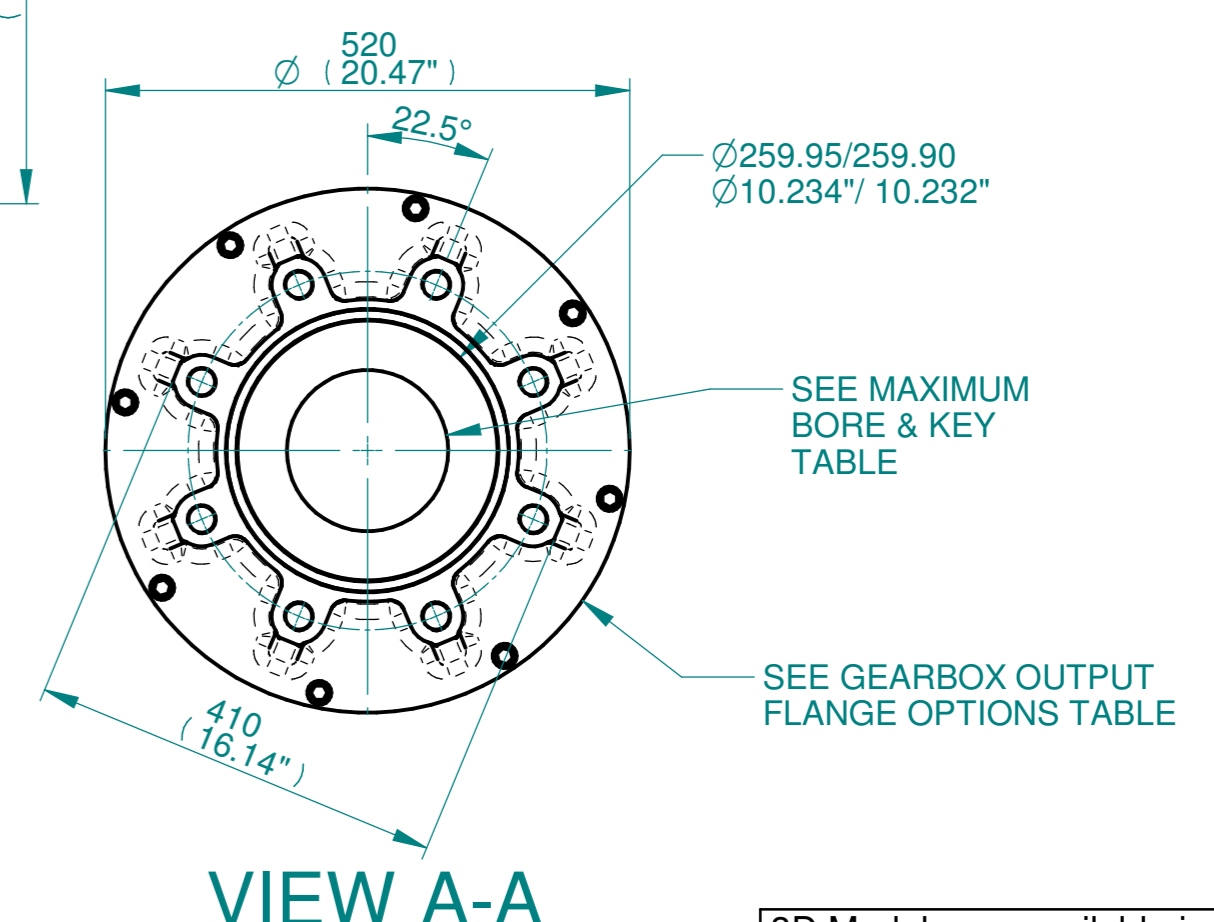
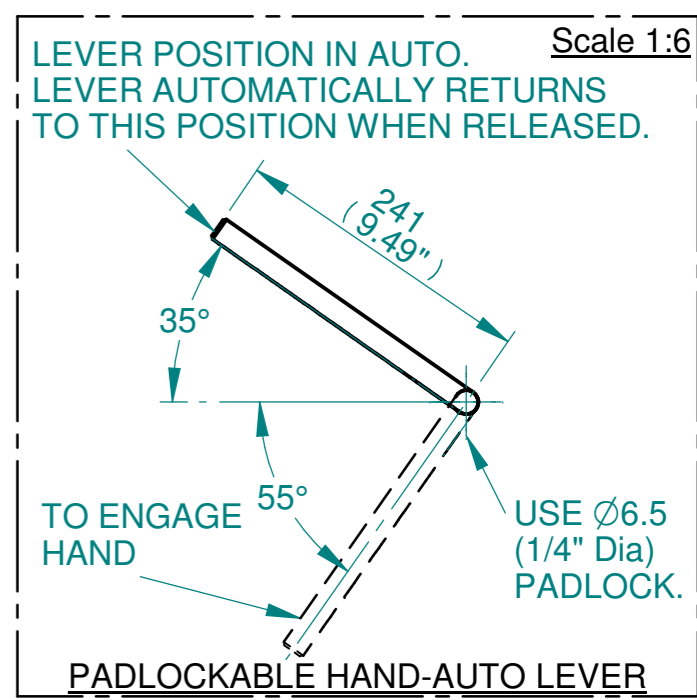
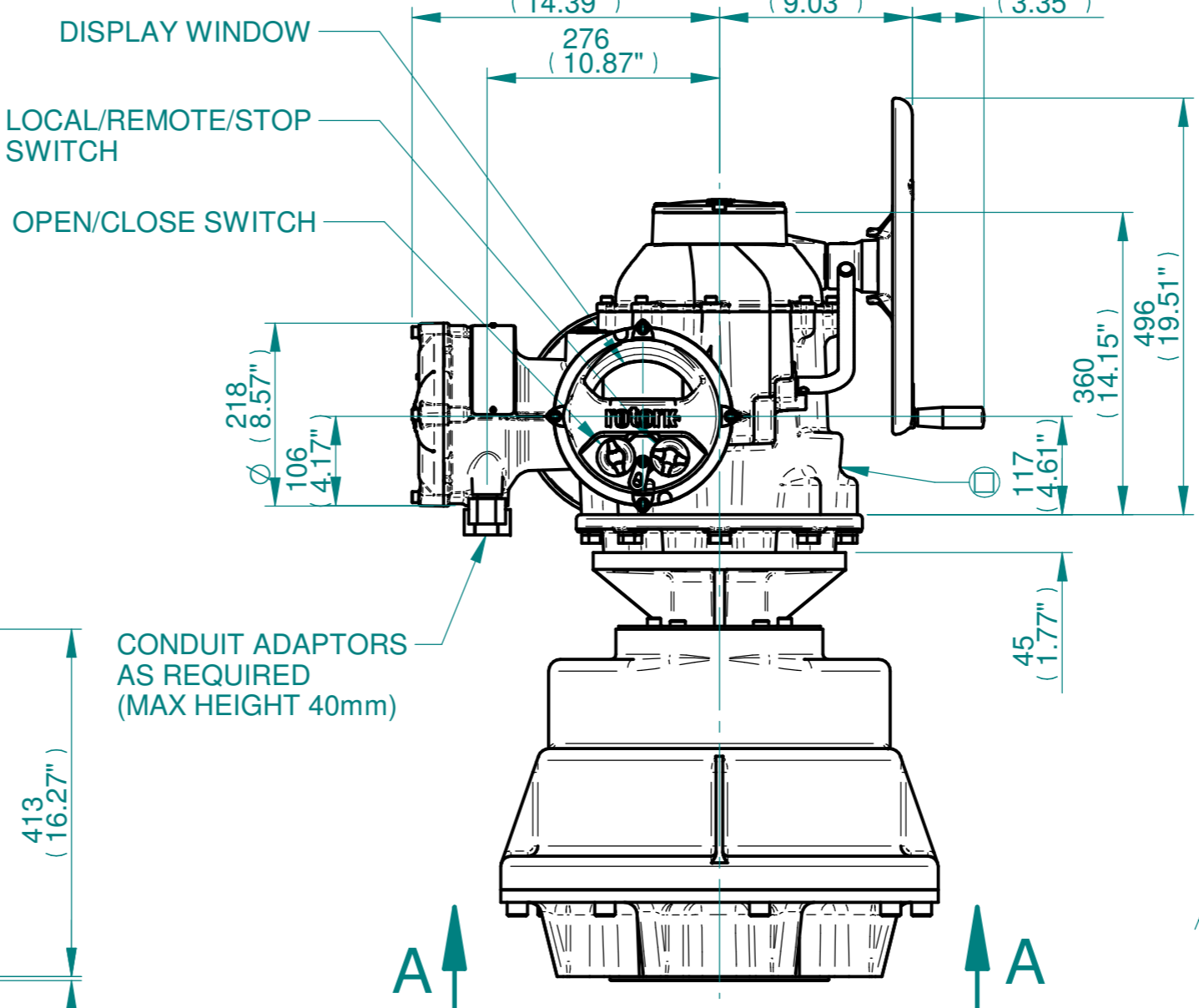
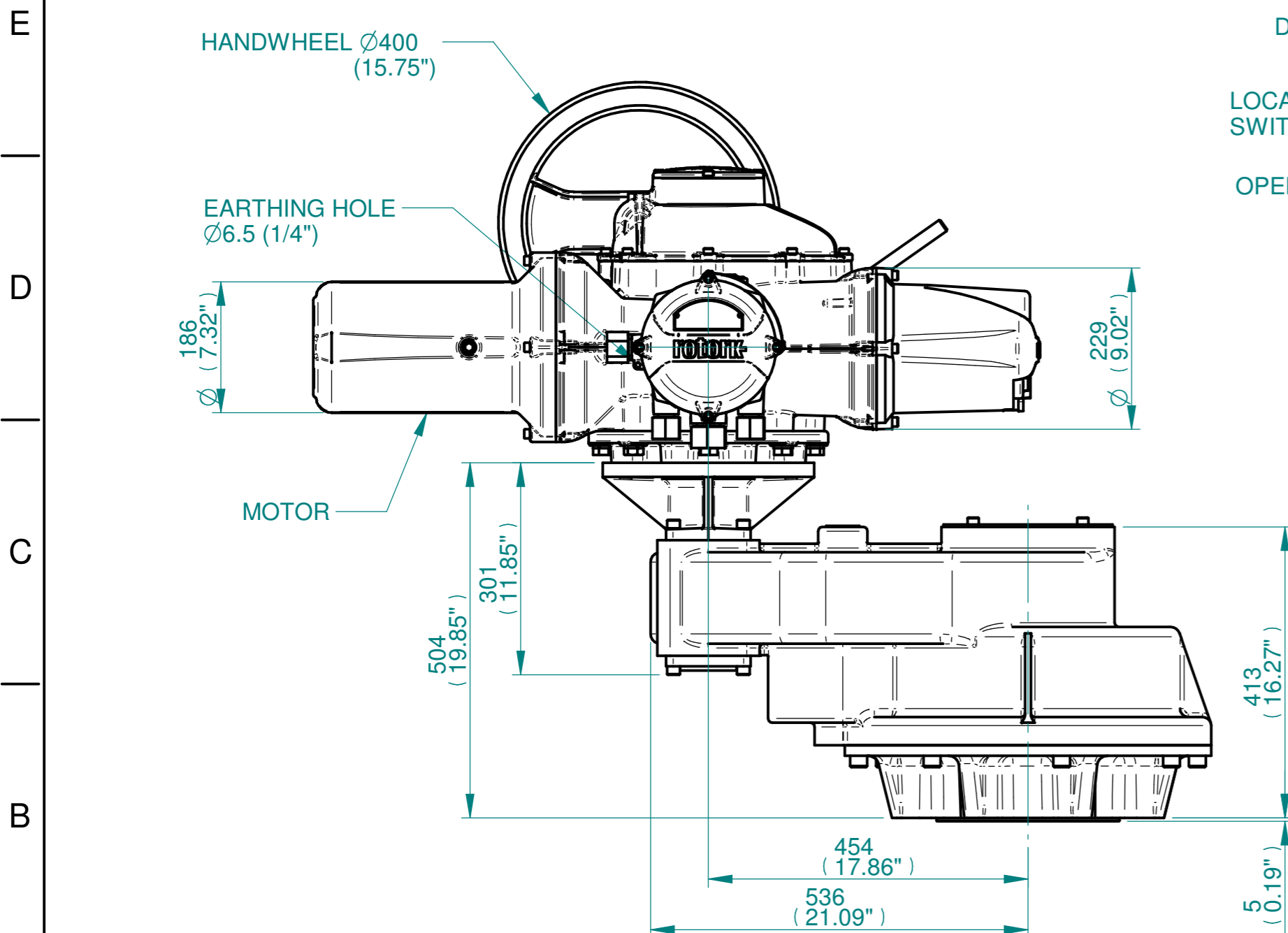


**NOTES:**  
 :DIMENSIONS WITH "\*" INDICATE COVER REMOVAL ALLOWANCE  
 :NETT WEIGHT = 430kg/948lbs  
 : = OIL FILLER/DRAIN PLUG  
 :THE INTERFACE PROVIDED FOR MOUNTING THE ACTUATOR OR SECOND STAGE GEARBOX ONTO THE VALVE SHOULD CONFORM TO GOOD ENGINEERING PRACTICES, ENSURING ADEQUATELY TOLERANCED LIMITS FOR PARALLELISM, PERPENDICULARITY AND CONCENTRICITY.  
 :ROTORK CANNOT BE HELD LIABLE FOR DAMAGE TO OUR EQUIPMENT CAUSED BY EXCESSIVE LOADING FROM COVER TUBES. (SEE ALSO PUB000-124)



	Hole 1	Hole 2	Hole 3	Hole 4
Size	As Required	As Required	As Required	As Required
Plugged	As Required	As Required	As Required	As Required
Gland	As Required	As Required	As Required	As Required

**ISOMETRIC VIEW  
1:10**



Actuator Size: IQ70,90,91,95, IS15		Gearbox output flange options								Maximum Bore & Key					
<b>rotork</b> www.rotork.com Rotork Controls Limited Bath, BA1 3JQ, England. Telephone 01225-733200	Title IQ70,90,91,95 SIDE HANDWHEEL, IS15, F35, FA35, Ratios 10:1,12:1 & 15:1 Installation Details	Designation	F35	-	-	-	-	FA35	-	-	-	Key form	Ø Bore	Key size	
	Drawn DH Checked JBA Date FEB 19	No. Holes	8	-	-	-	-	8	-	-	-	Rectangle (BS4235)	121	32 x 18	
	Ref SALES Project Ref QUOTATION	Hole size	M30	-	-	-	-	1" UNC	-	-	-	-	-	-	-
		PCD	356	-	-	-	-	14"	-	-	-	-	-	-	-

3D Models are available in various formats under the same drawing number

Issue	Description
1	FIRST ISSUE

Scale: 1:7.5 THIRD ANGLE PROJECTION

Drawing Number	Issue No	Sheet No
I15SHWIS15STD	1	1 of 1