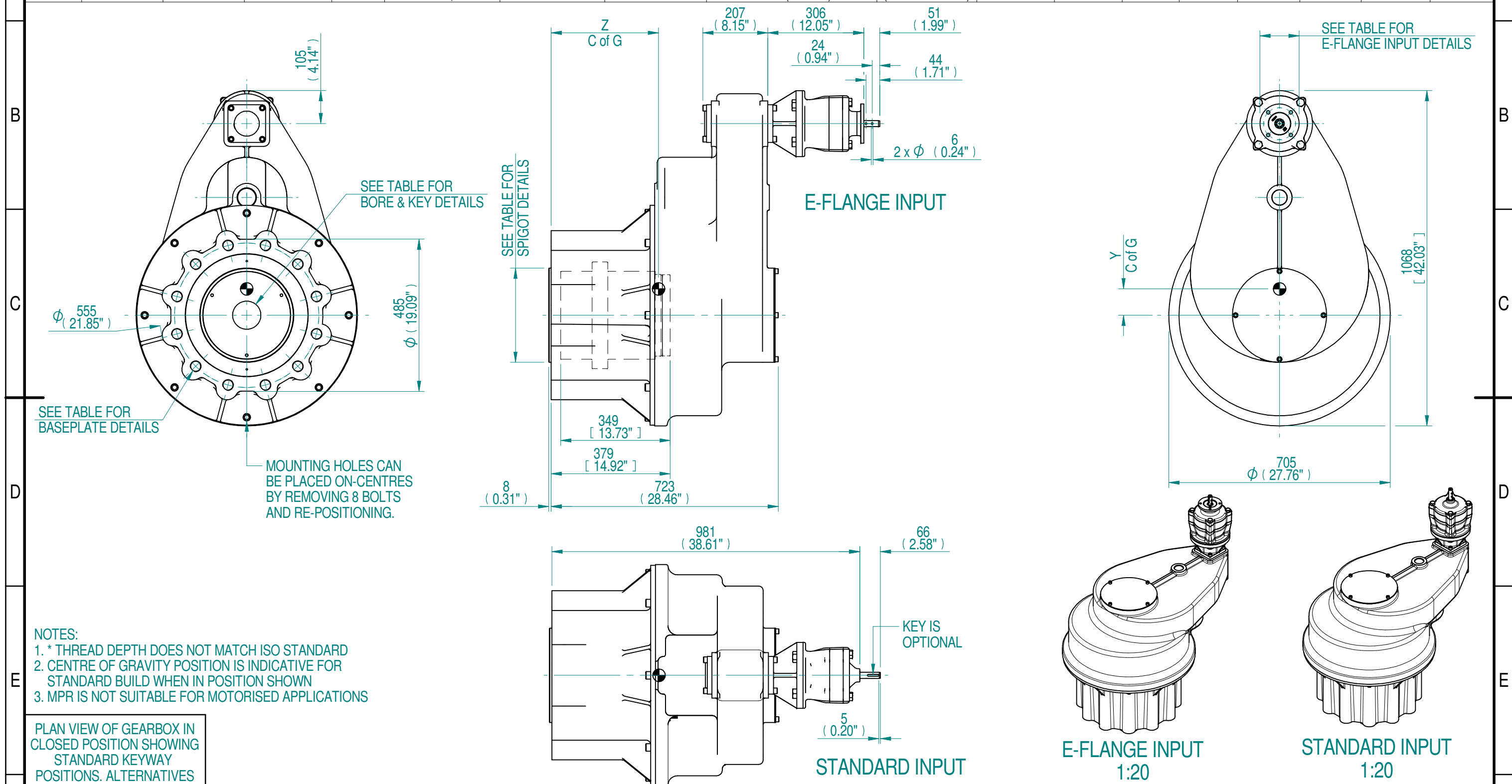
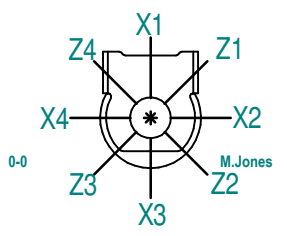


1	2 E-FLANGE INPUT DETAILS				3 MOUNTING HOLES - BOLT CIRCLE (OFF CENTRES)				4 ISO 5211 / MSS SP-101 MOUNTING OPTION				5 HOLE DETAILS (22.5° OFF CENTRES)				6 SPIGOT DIAMETER				7 MAX SCREW STEM ACCEPTANCE				8 STEM ACCEPTANCE IN ACCORDANCE TO STANDARD			
INPUT FLANGE	FLANGE O/DIA. + THICKNESS	SHAFT DIA.	RECESS DIA.	RECESS DEPTH	HOLE DETAILS (45° OFF CENTRES)		KEY DETAILS		ISO 5211 / MSS SP-101 MOUNTING OPTION	HOLE DETAILS (22.5° OFF CENTRES)		SPIGOT DIAMETER		MAX SCREW STEM ACCEPTANCE	STANDARD	MIN BORE	SQ KEY MAX BORE	SQ KEY SIZE	RECT. KEY MAX BORE	RECT. KEY SIZE	SQ BORE MAX							
E-FLANGE	Ø125x11 (Ø4.92"x0.41")	19.98-0.05 (0.787"-0.002")	Ø70 +0.07 (Ø2.756"+0.003")	5.5 (0.217")	4 x Ø10.5 ON Ø102.0 P.C. (4 x Ø0.41" ON Ø4.02" P.C.)		6x6x36 (0.24"x0.24"x1.42")		F48*	12 x M36 x 45 (1.77") DEEP ON Ø483.0 (Ø19.02") P.C.		Ø369.95-0.05 (Ø14.565"-0.002")		225 (8.750")	BS4235	-	-	-	206	50x28	□ 161 (6.339")							
								FA48	12 x 1.25" UNC x 45 (1.77") DEEP ON Ø482.6 (Ø19.00") P.C.		Ø368.20-0.15 (Ø14.496"-0.006")		BS46		-	7.500"	1 7/8" SQ.	7.750"	2" x 1 3/8"									
													ANSI B17.1		-	7.500"	1 3/4" SQ.	7.750"	2" x 1 1/2"									
													DIN 6885		-	-	-	-	-									



- NOTES:**
- \* THREAD DEPTH DOES NOT MATCH ISO STANDARD
  - CENTRE OF GRAVITY POSITION IS INDICATIVE FOR STANDARD BUILD WHEN IN POSITION SHOWN
  - MPR IS NOT SUITABLE FOR MOTORISED APPLICATIONS

PLAN VIEW OF GEARBOX IN CLOSED POSITION SHOWING STANDARD KEYWAY POSITIONS. ALTERNATIVES AVAILABLE ON REQUEST



662.4	479.1	964.51 kg	46,100 Nm	96.2 Nm	0	84	342
RATIO	M.A.	WEIGHT	MAX OUTPUT	MAX INPUT	X	Y	Z
DESCRIPTION			TORQUE		CENTRE OF GRAVITY		

AS PART OF CONTINUOUS PRODUCT DEVELOPMENT, ALL DETAILS SUBJECT TO CHANGE WITHOUT PRIOR NOTICE. FOR UP TO DATE DETAILS PLEASE VISIT [www.rotork.com](http://www.rotork.com)

**rotork** Gears  
LEEDS - UK  
[www.rotork.com](http://www.rotork.com)

This drawing is confidential and is the property of Rotork Gears and must not be reproduced either wholly or partly. All rights in respect of patents, designs and copyrights are reserved. © 2019

Document Type	<b>PUBLICITY</b>	Mass	964.51 kg	Title	<b>HOS20 MPR28 662.4 F48 GEARBOX E-FLANGE STANDARD / E-FLANGE INPUT REDUCER, F48/FA48 OUTPUT.</b>	
Created	M JONES	10/05/2019	Drawing Number	PUB-HOS20MPR28-662.4-F48		
Checked			Iss.	0-0		
Approved	N.Coope	2019-10-15	Sheet	1	of	1
			Size	A3		