
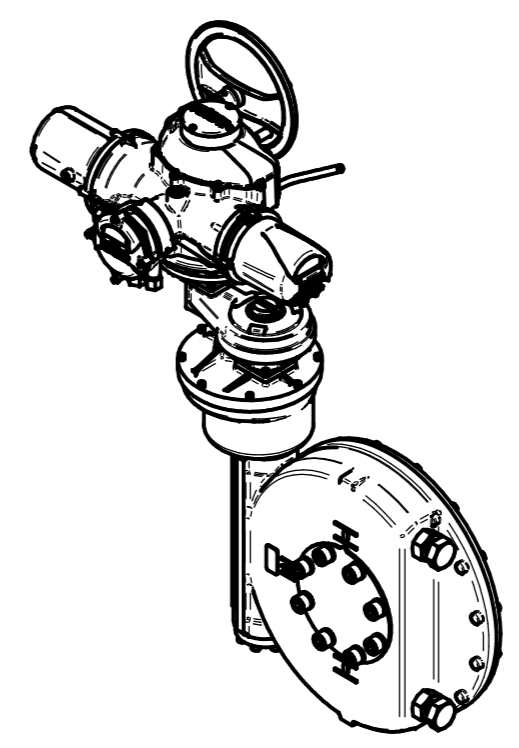
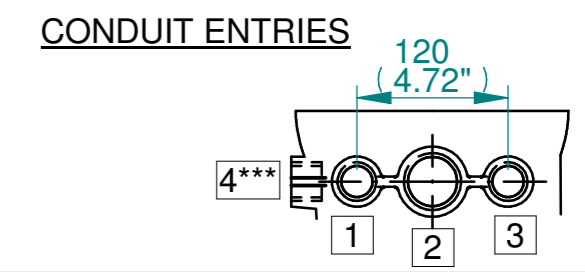


NOTES:
 :DIMENSIONS WITH "*" INDICATE COVER REMOVAL ALLOWANCE
 :NETT WEIGHT = 716kg/1578lbs
 :  = OIL FILLER/DRAIN PLUG
 :THE INTERFACE PROVIDED FOR MOUNTING THE ACTUATOR OR SECOND STAGE GEARBOX ONTO THE VALVE SHOULD CONFORM TO GOOD ENGINEERING PRACTICES, ENSURING ADEQUATELY TOLERANCED LIMITS FOR PARALLELISM, PERPENDICULARITY AND CONCENTRICITY.
 :ROTORK CANNOT BE HELD LIABLE FOR DAMAGE TO OUR EQUIPMENT CAUSED BY EXCESSIVE LOADING FROM COVER TUBES. (SEE ALSO E156E)

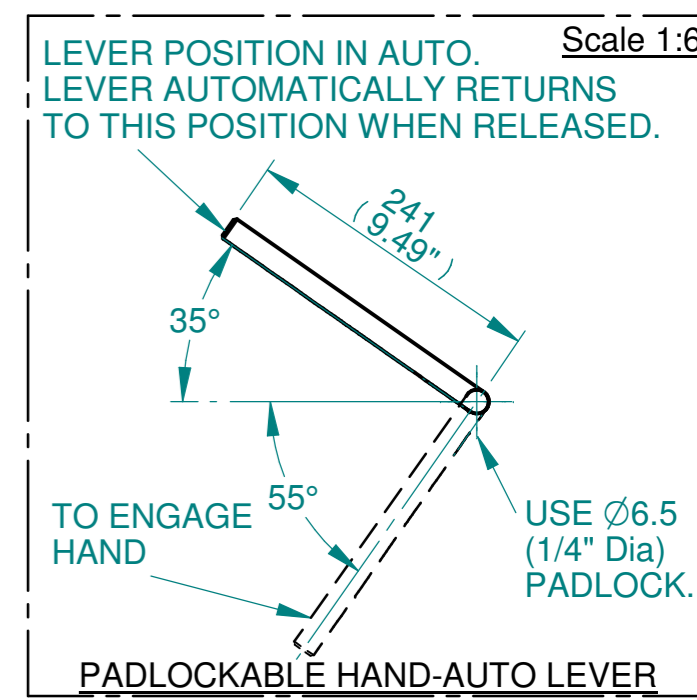


ISOMETRIC VIEW (SCALE 1:20)



	Hole 1	Hole 2	Hole 3	Hole 4***
Size	As Required	As Required	As Required	As Required
Plugged	As Required	As Required	As Required	As Required
Gland	As Required	As Required	As Required	As Required

***HOLE 4 IS OPTIONAL

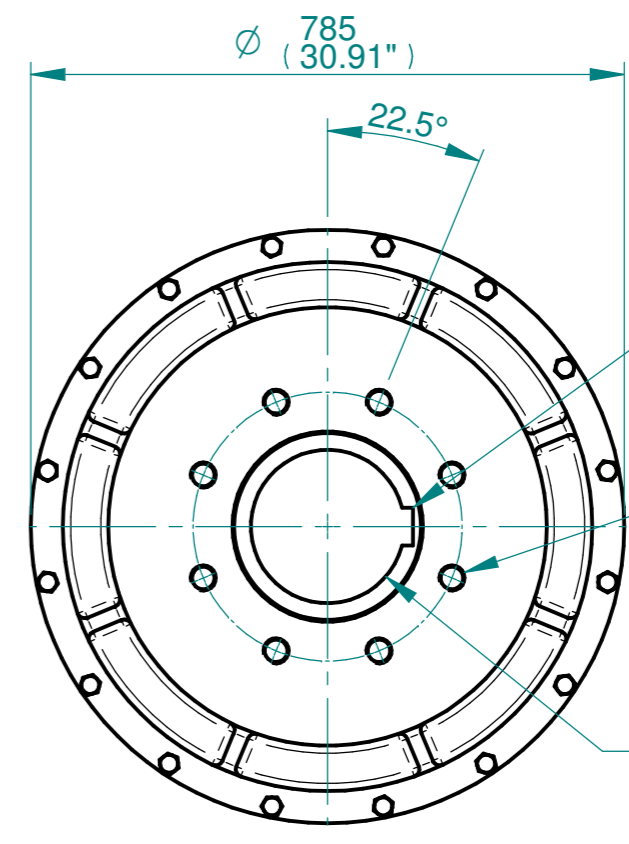
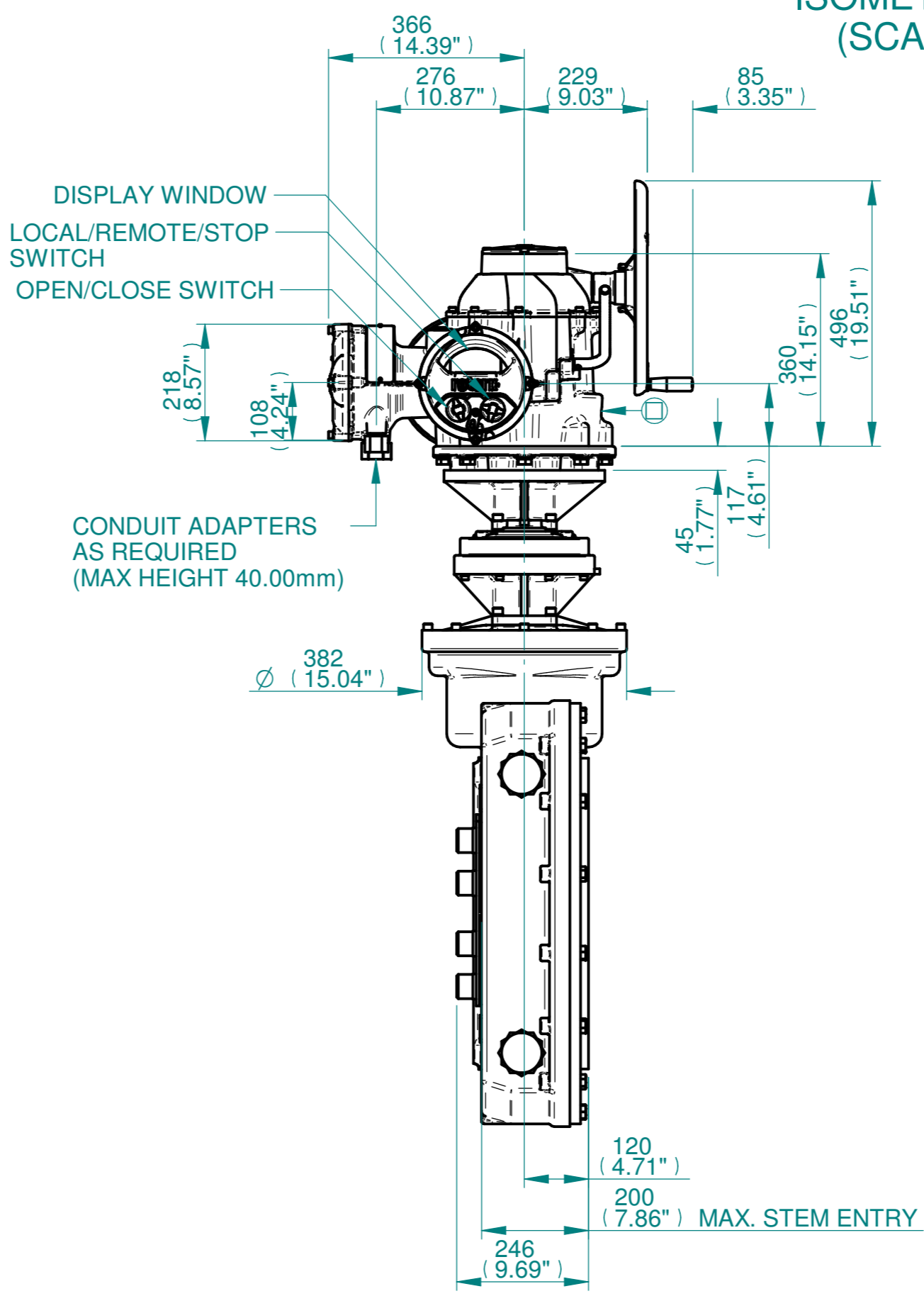
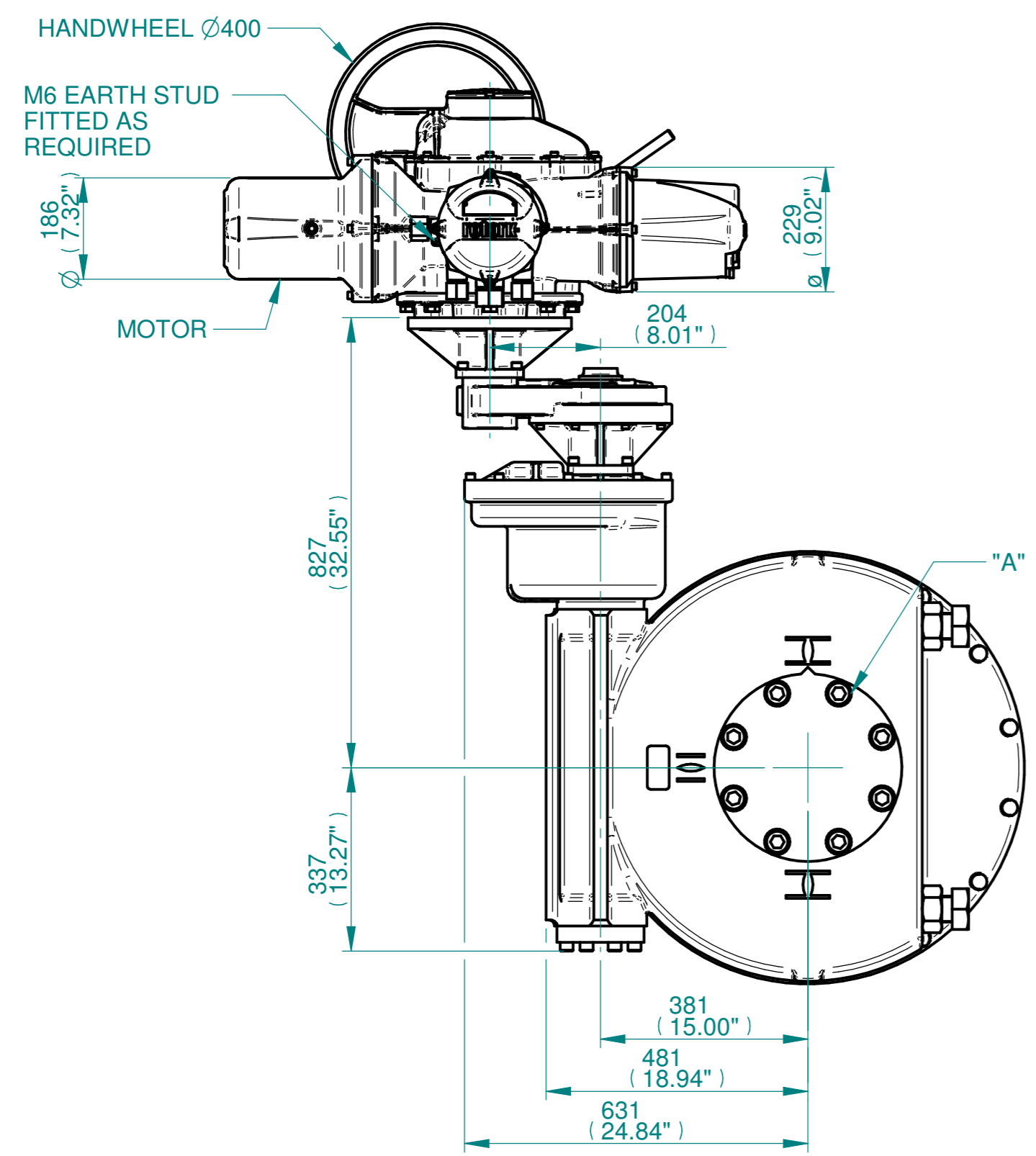
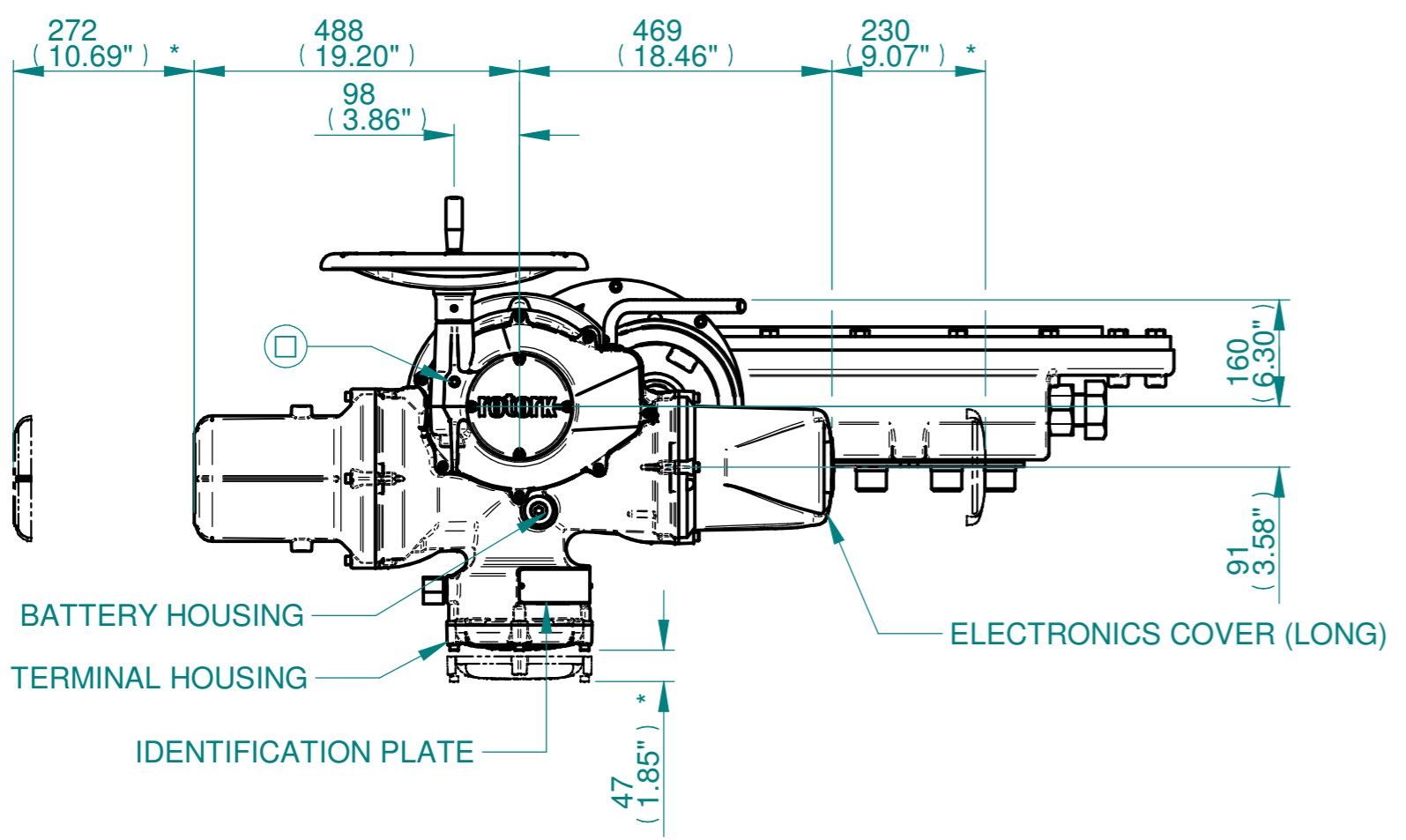


N.B. KEYWAY POS. CAN BE MOVED IN 45° STEPS BY REMOVING 8 SCREWS MARKED "A" AND ROTATING OUTPUT SLEEVE

SEE GEARBOX OUTPUT FLANGE OPTIONS TABLE

SEE MAXIMUM BORE & KEY TABLE

3D Models are available in various formats under the same drawing number



Actuator Size: IQ40 IW115 & 116IR35AS5		Gearbox output flange options								Maximum Bore & Key					
Title	IQ40, SIDE HANDWHEEL, IW115IR35AS5 / IW116IR35AS5, F/FA35, 40 & 48, Ratios 1190 - 6560:1 Installation Details	Designation	F35	F40	F48	-	FA35	FA40	FA48	-	Key form	ϕ Bore	Key size		
Drawn	TED	Checked	NJC	Date	18-AUG-14	No. Holes	8	8	12	NOT SHOWN	Rectangle (BS4235)	270	63 X 32		
Ref	SALES	Project Ref	QUOTATION	Hole size	M30	M36	M36	-	1" UNC	1-1/4" UNC	1-1/4" UNC	-	Rectangle (ANSI B17.1)	7-5/8"	2 X 1-1/2"
				PCD	356	406	483	-	14"	16"	19"	-	Square (ANSI B17.1)	7-3/8"	1-3/4" SQ

Issue	Description
2	OUTPUT FLANGE CHANGE

Scale: 1:10

THIRD ANGLE PROJECTION

Drawing Number	Issue No	Sheet No
114SHWIW115IR35AS5STD	2	1 of 1

rotork
 www.rotork.com
 Rotork Controls Limited
 Bath, BA1 3JQ, England.
 Telephone 01225-733200