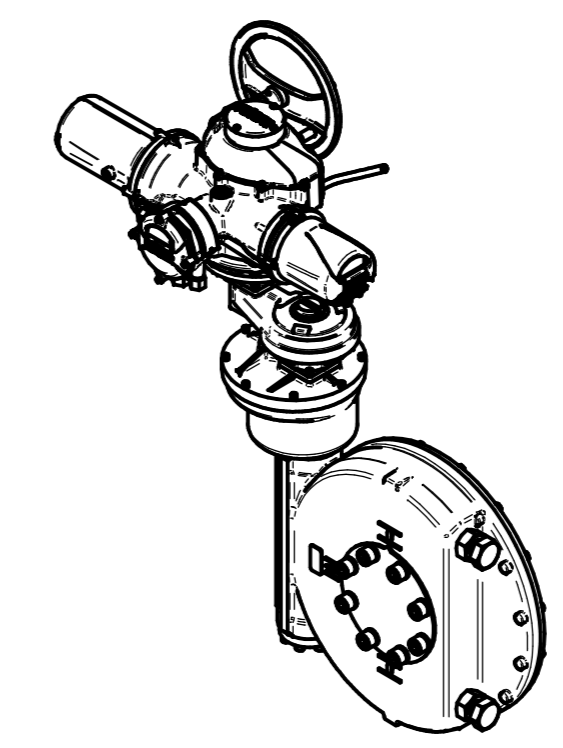
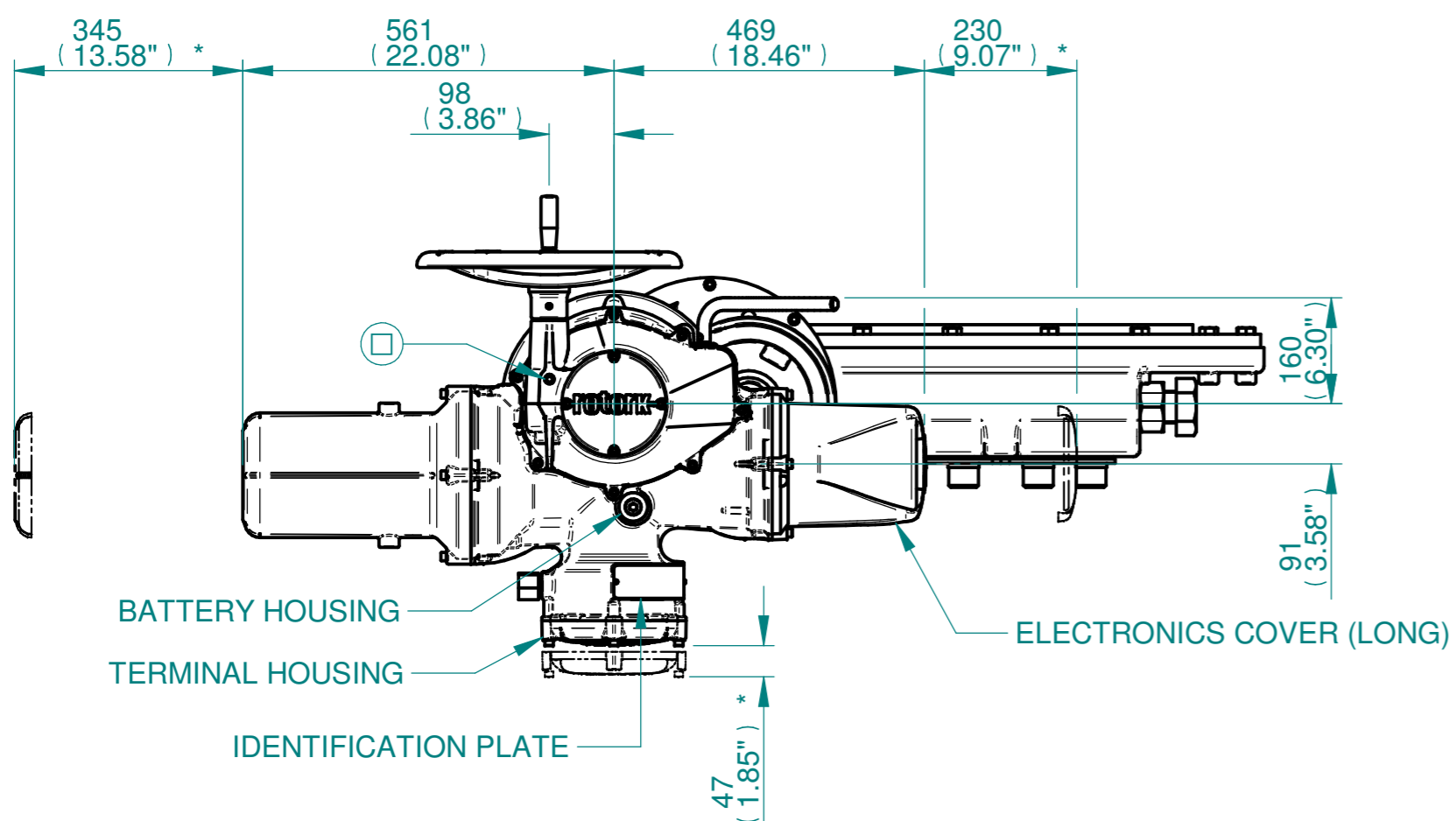
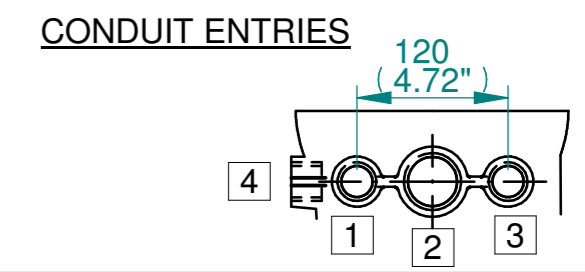


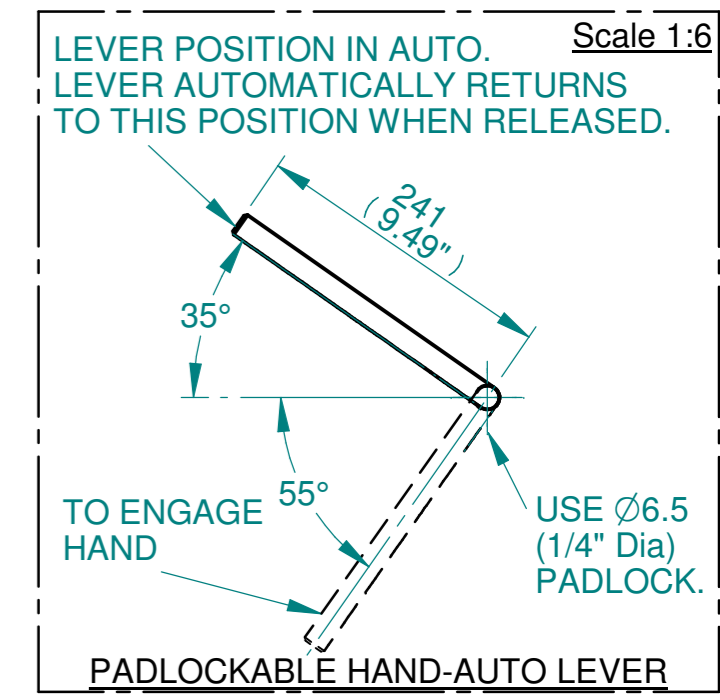
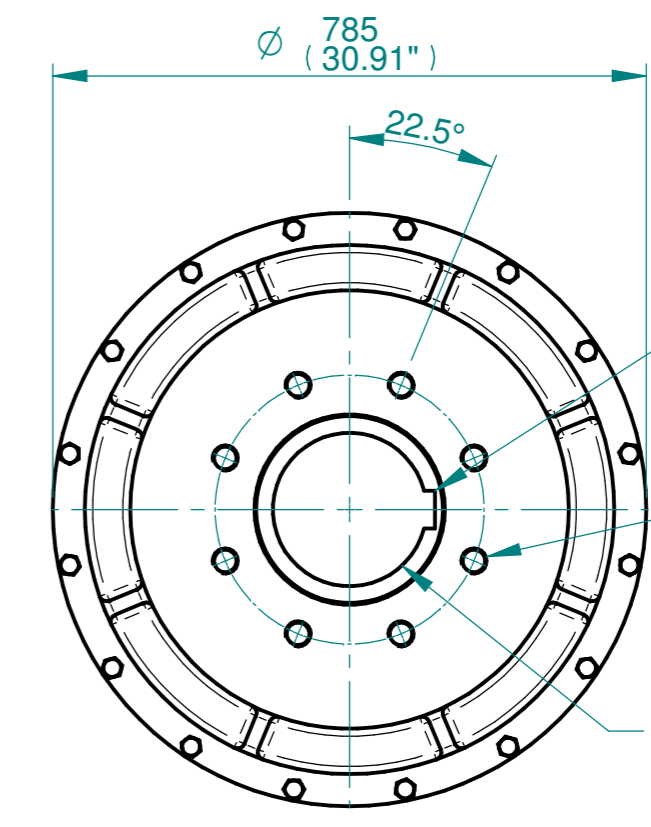
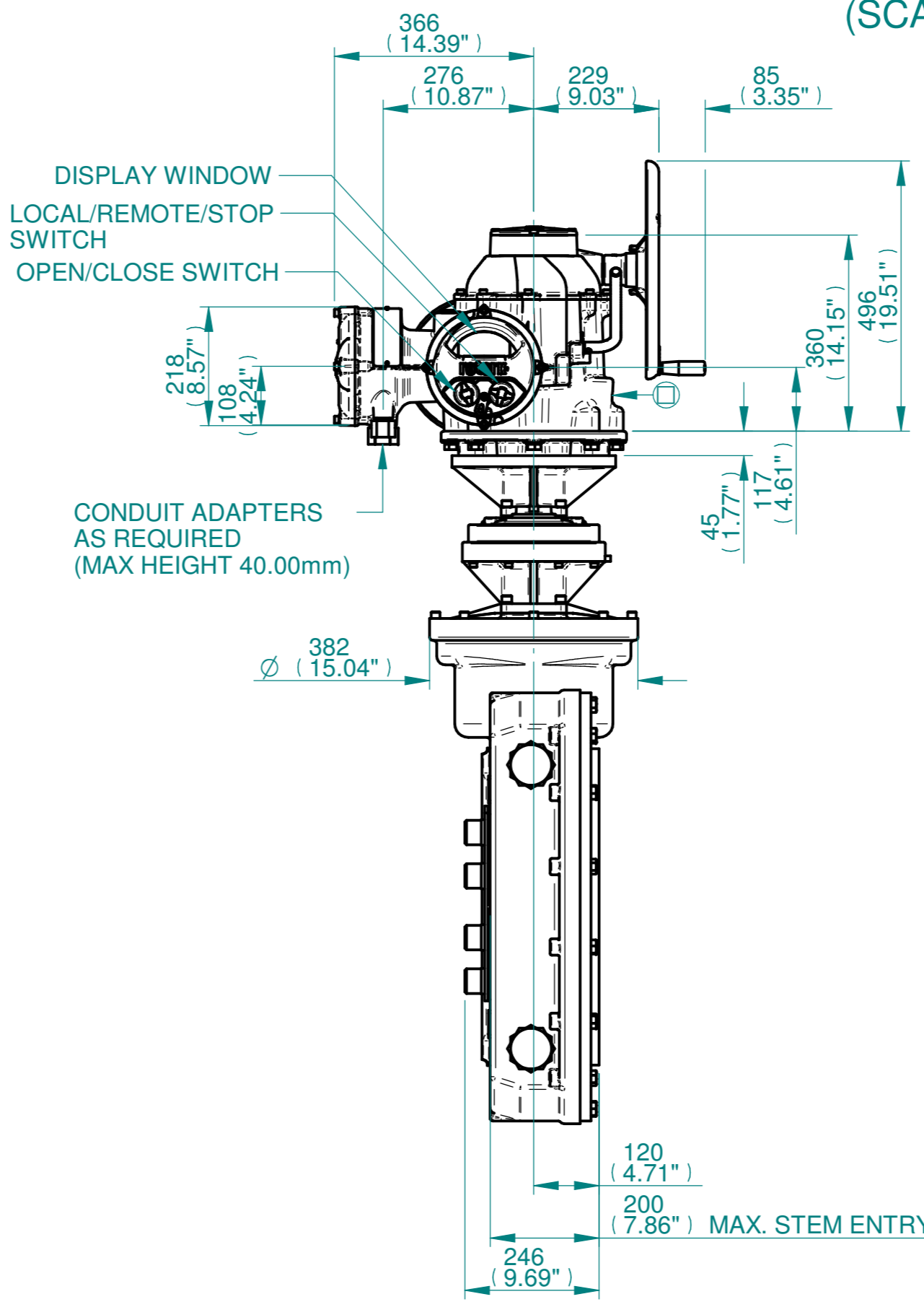
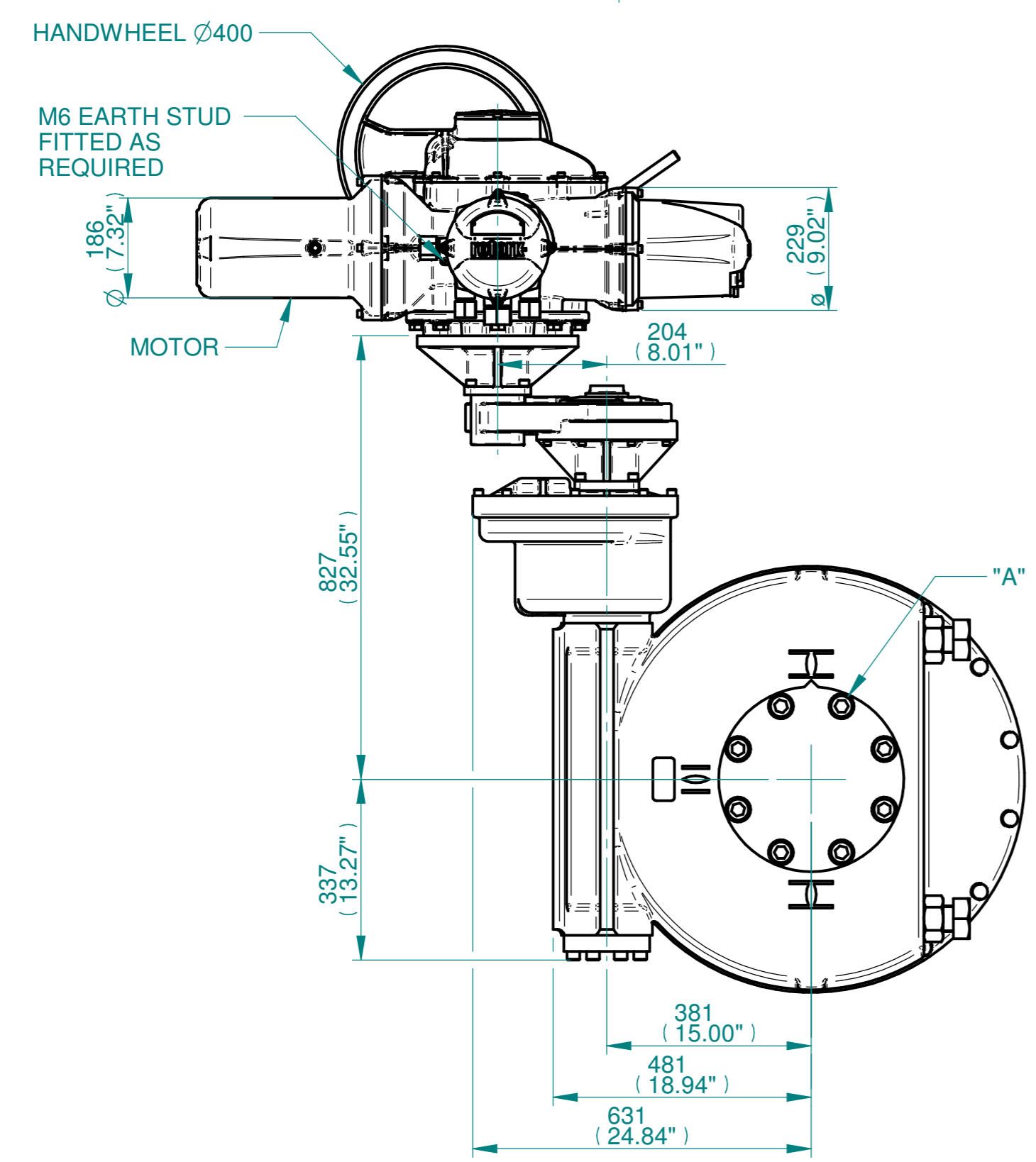
H
G
F
E
D
C
B
A



NOTES:
 : DIMENSIONS WITH "*" INDICATE COVER REMOVAL ALLOWANCE
 : NETT WEIGHT = 716kg/1578lbs
 : = OIL FILLER/DRAIN PLUG
 : THE INTERFACE PROVIDED FOR MOUNTING THE ACTUATOR OR SECOND STAGE GEARBOX ONTO THE VALVE SHOULD CONFORM TO GOOD ENGINEERING PRACTICES, ENSURING ADEQUATELY TOLERANCED LIMITS FOR PARALLELISM, PERPENDICULARITY AND CONCENTRICITY.
 : ROTORK CANNOT BE HELD LIABLE FOR DAMAGE TO OUR EQUIPMENT CAUSED BY EXCESSIVE LOADING FROM COVER TUBES. (SEE ALSO PUB000-124)



| | Hole 1 | Hole 2 | Hole 3 | Hole 4 |
|---------|-------------|-------------|-------------|-------------|
| Size | As Required | As Required | As Required | As Required |
| Plugged | As Required | As Required | As Required | As Required |
| Gland | As Required | As Required | As Required | As Required |



N.B. KEYWAY POS. CAN BE MOVED IN 45° STEPS BY REMOVING 8 SCREWS MARKED "A" AND ROTATING OUTPUT SLEEVE
 SEE GEARBOX OUTPUT FLANGE OPTIONS TABLE
 SEE MAXIMUM BORE & KEY TABLE

3D Models are available in various formats under the same drawing number



Rotork Controls Limited
 Bath, BA1 3JQ, England.
 Telephone 01225-733200

| Actuator Size: IQ70/90/95 IW115 & 116IR35AS5 | | Gearbox output flange options | | | | | | | | Maximum Bore & Key | | | |
|--|--|-------------------------------|-----|-----|--------------|---|--------|------------|--------------|--------------------|------------------------|--------------------|------------|
| Title | IQ70/90/95, SIDE HANDWHEEL, IW115IR35AS5 / IW116IR35AS5, F/FA35, 40 & 48 Ratios 1190 - 6560:1 Installation Details | Designation | F35 | F40 | F48 | - | FA35 | FA40 | FA48 | - | Key form | \varnothing Bore | Key size |
| Drawn | TED | No. Holes | 8 | 8 | 12 NOT SHOWN | - | 8 | 8 | 12 NOT SHOWN | - | Rectangle (BS4235) | 270 | 63 X 32 |
| Checked | NJC | Hole size | M30 | M36 | M36 | - | 1" UNC | 1-1/4" UNC | 1-1/4" UNC | - | Rectangle (ANSI B17.1) | 7-5/8" | 2 X 1-1/2" |
| Date | 18-AUG-14 | PCD | 356 | 406 | 483 | - | 14" | 16" | 19" | - | Square (ANSI B17.1) | 7-3/8" | 1-3/4" SQ |
| Ref | SALES Project Ref QUOTATION | | | | | | | | | | | | |

| Issue | Description |
|-------|----------------------|
| 2 | OUTPUT FLANGE CHANGE |

Scale: 1:10 THIRD ANGLE PROJECTION

| Drawing Number | Issue No | Sheet No |
|-----------------------|----------|----------|
| I15SHWIW115IR35AS5STD | 2 | 1 of 1 |

1 2 3 4 5 6 7 8 9 10 11 12