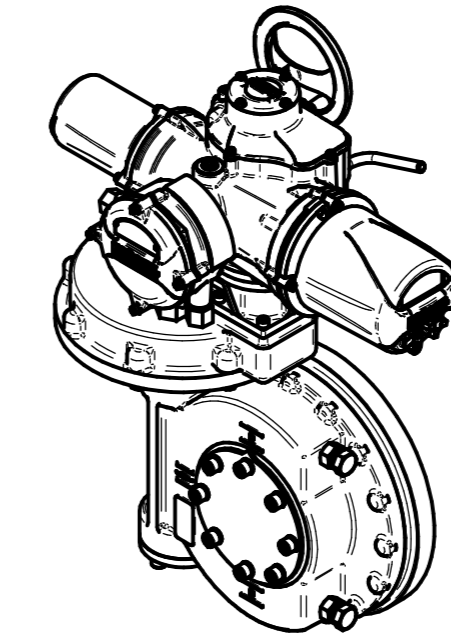
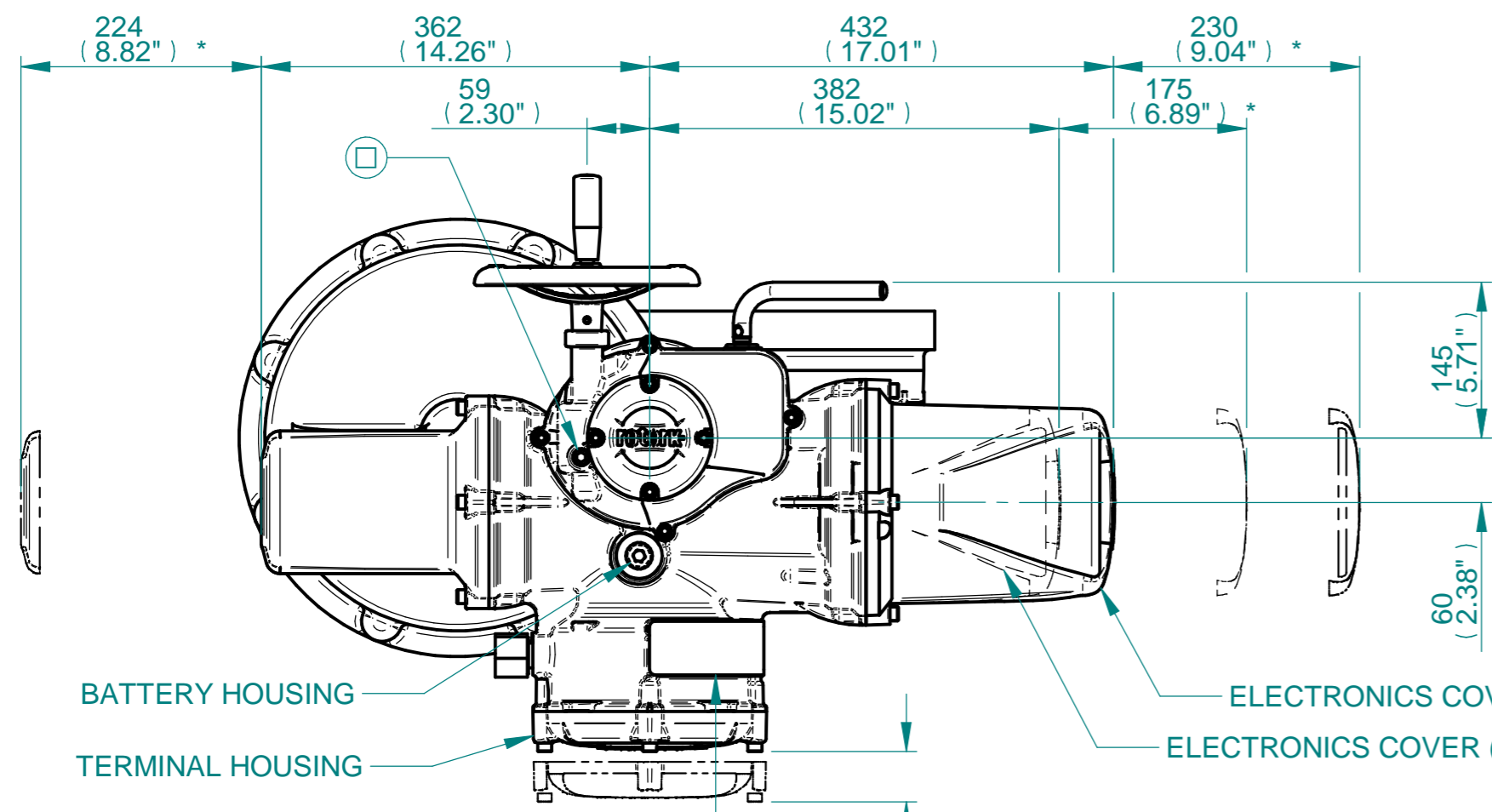


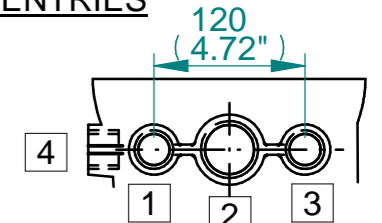
H  
G  
F  
E  
D  
C  
B  
A



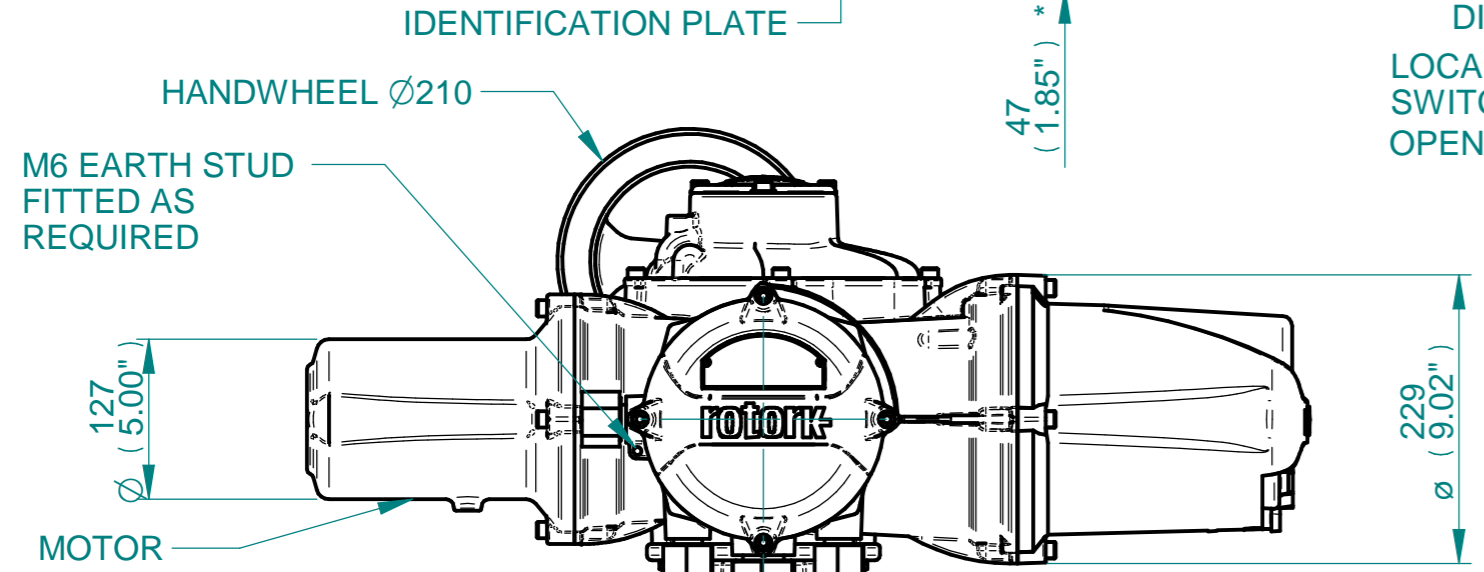
ISOMETRIC VIEW (SCALE 1:12)

**NOTES:**  
 :DIMENSIONS WITH "\*" INDICATE COVER REMOVAL ALLOWANCE  
 :ELECTRONICS COVER OPTION "\*" WILL VARY DEPENDING ON CONFIGURATION  
 :NETT WEIGHT = 269kg/593lbs  
 : = OIL FILLER/DRAIN PLUG  
 :THE INTERFACE PROVIDED FOR MOUNTING THE ACTUATOR OR SECOND STAGE GEARBOX ONTO THE VALVE SHOULD CONFORM TO GOOD ENGINEERING PRACTICES, ENSURING ADEQUATELY TOLERANCED LIMITS FOR PARALLELISM, PERPENDICULARITY AND CONCENTRICITY.  
 :ROTORK CANNOT BE HELD LIABLE FOR DAMAGE TO OUR EQUIPMENT CAUSED BY EXCESSIVE LOADING FROM COVER TUBES. (SEE ALSO PUB000-124)

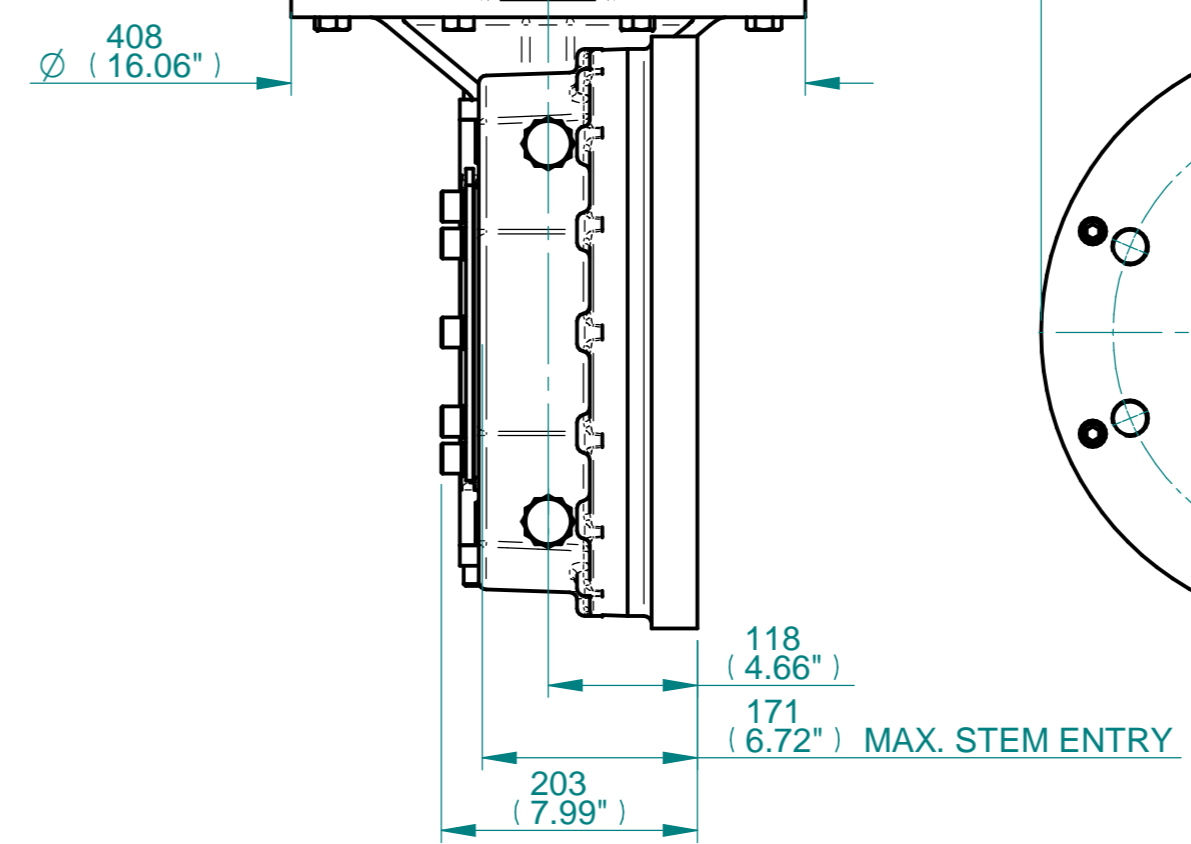
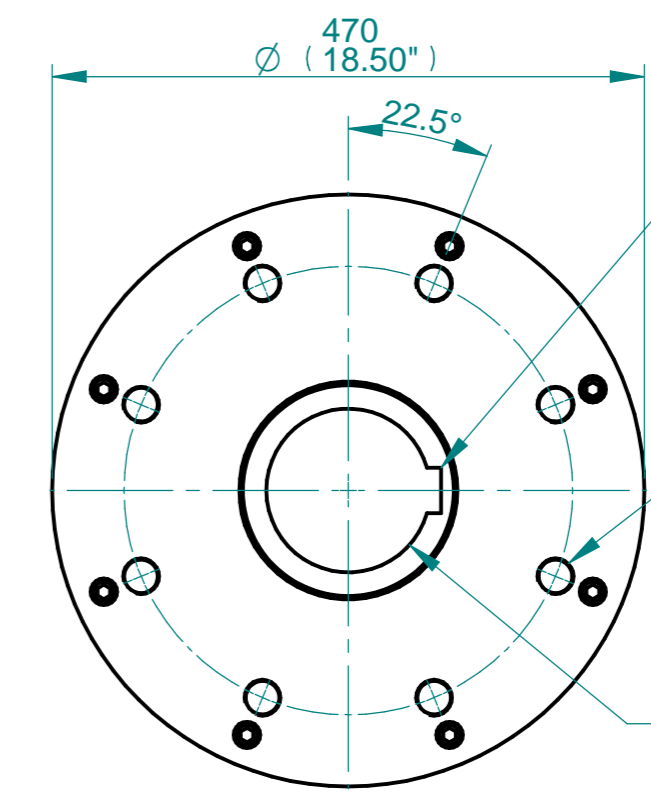
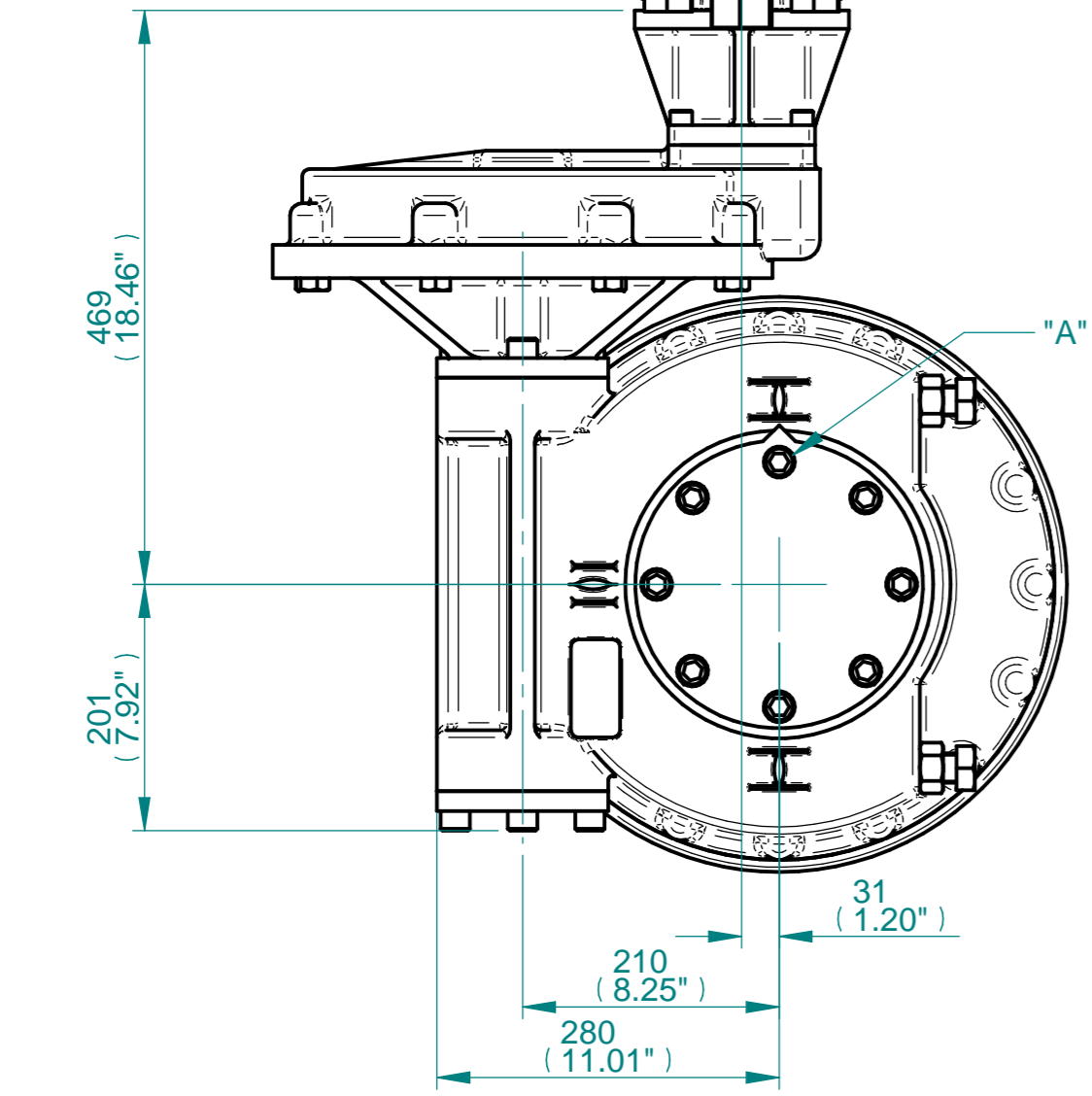
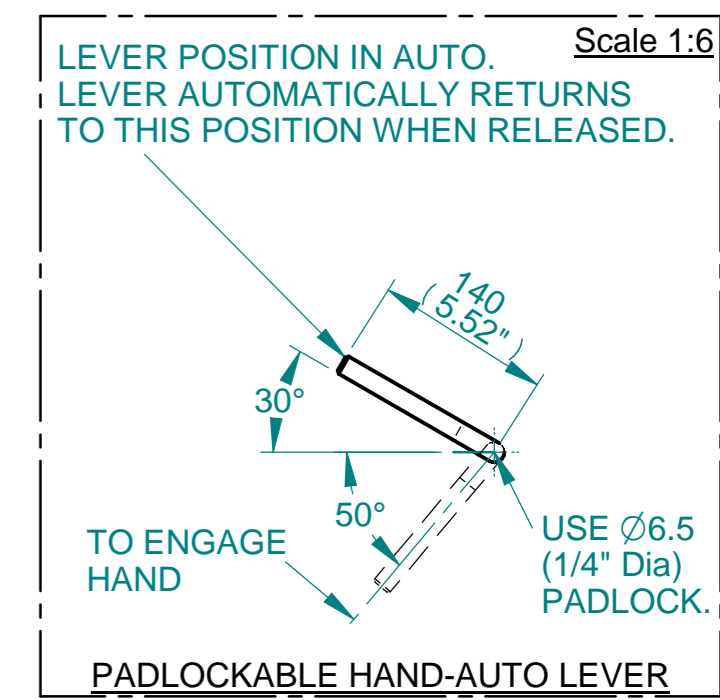
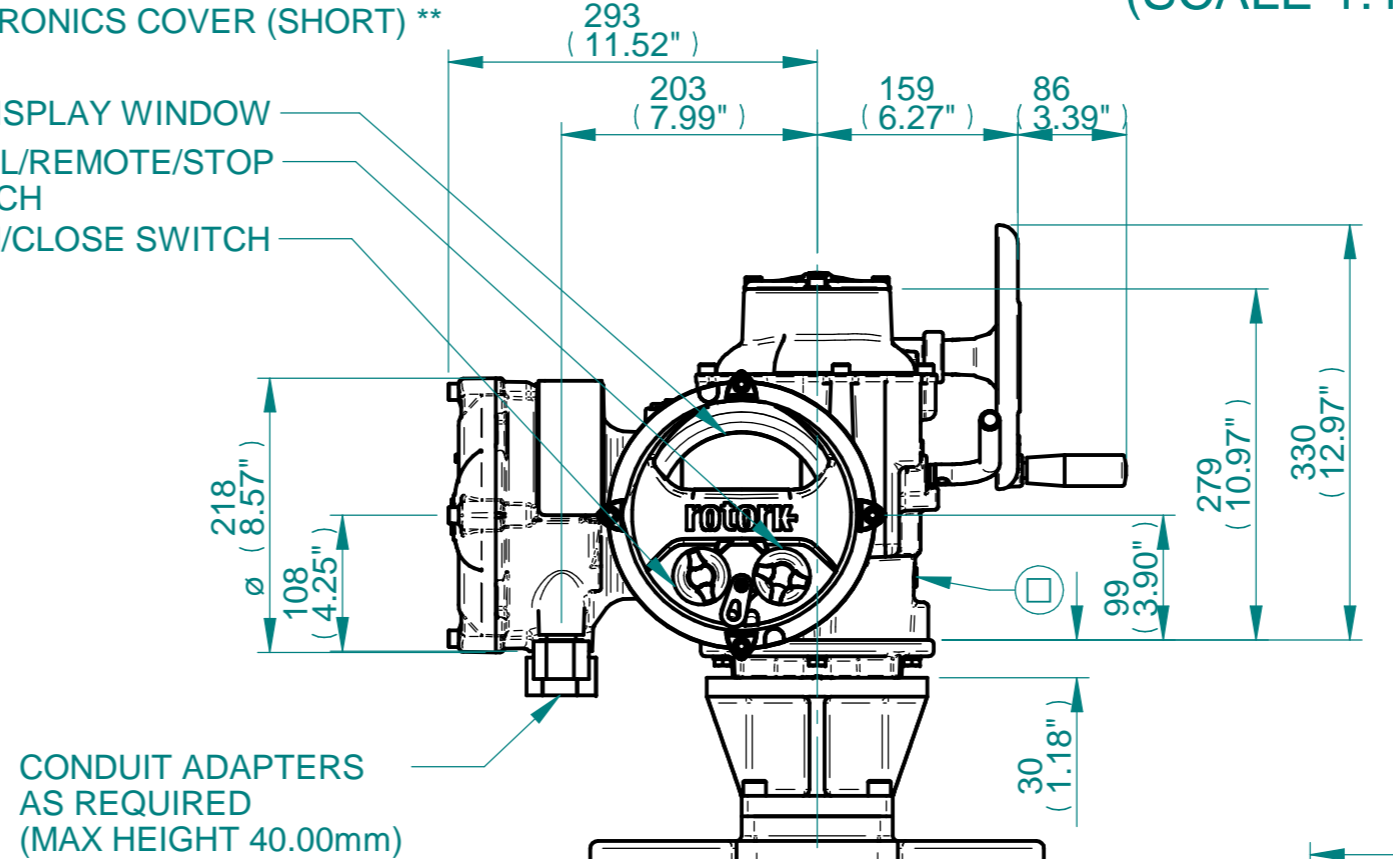
**CONDUIT ENTRIES**



	Hole 1	Hole 2	Hole 3	Hole 4
Size	As Required	As Required	As Required	As Required
Plugged	As Required	As Required	As Required	As Required
Gland	As Required	As Required	As Required	As Required



DISPLAY WINDOW  
 LOCAL/REMOTE/STOP SWITCH  
 OPEN/CLOSE SWITCH



3D Models are available in various formats under the same drawing number



Rotork Controls Limited  
 Bath, BA1 3JQ, England.  
 Telephone 01225-733200

Actuator Size: IQ 20/25 IW7,72 & 76RH/MOW7RH		Gearbox output flange options								Maximum Bore & Key			
Title	IQ20/25, SIDE HANDWHEEL, IW7RH / IW72RH / IW76RH / MOW7RH, F/FA35, Ratios 480 - 768:1 Installation Details	Designation	F35	-	-	-	FA35	-	-	-	Key form	Ø Bore	Key size
Drawn	DH	No. Holes	8	-	-	-	8	-	-	-	Rectangle (BS4235)	136	36 X 20
Checked	NJC	Hole size	M30	-	-	-	1" UNC	-	-	-	Rectangle (ANSI B17.1)	5-1/4"	1-1/4 X 7/8"
Date	29-SEP-20	PCD	356	-	-	-	14"	-	-	-	Square (ANSI B17.1)	4-7/8"	1-1/4" SQ
Ref	SALES Project Ref QUOTATION												

Issue	Description
1	First Issue

Scale: 1:6 THIRD ANGLE PROJECTION

Drawing Number	Issue No	Sheet No
I12SHWIW7RHENH	1	1 of 1

1 2 3 4 5 6 7 8 9 10 11 12