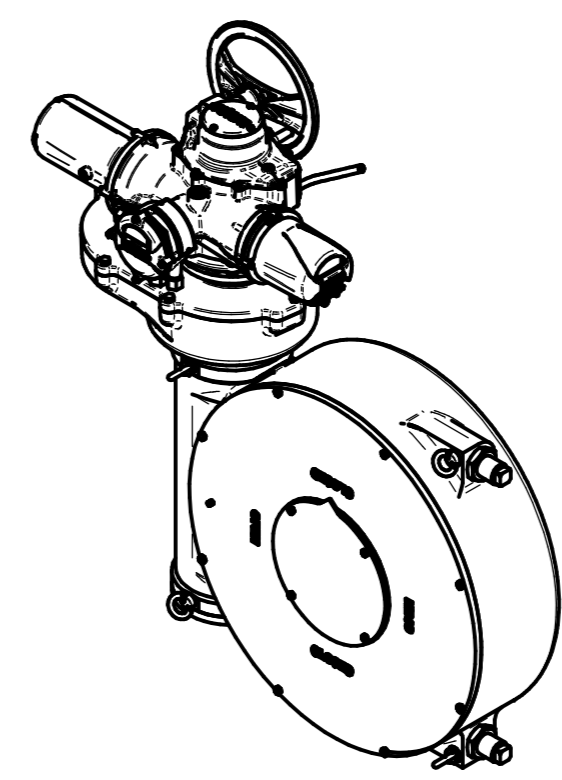
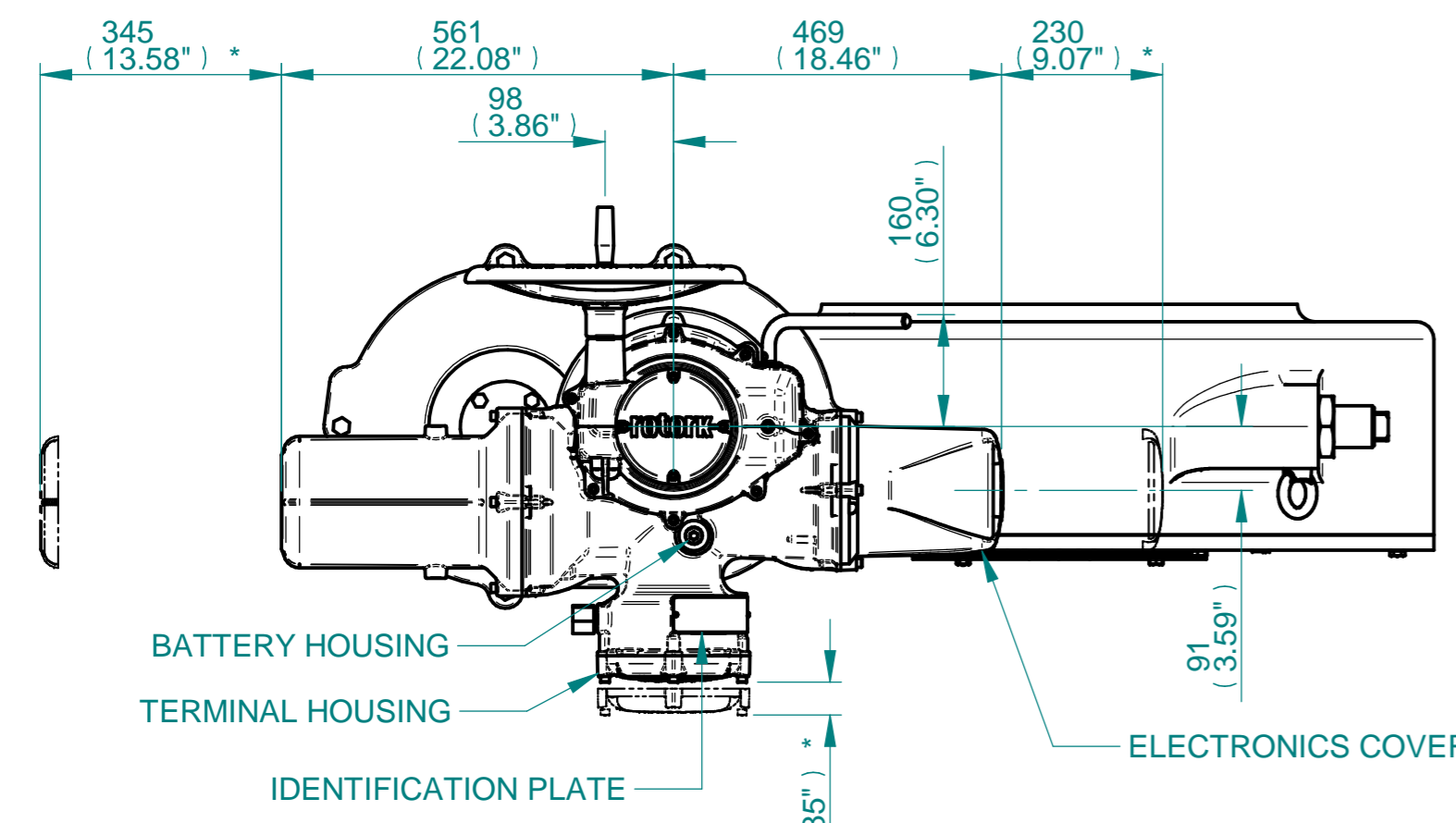


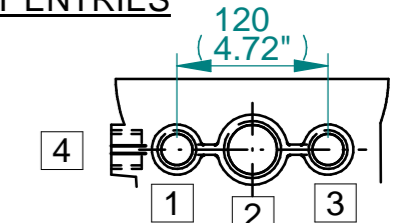
H
G
F
E
D
C
B
A



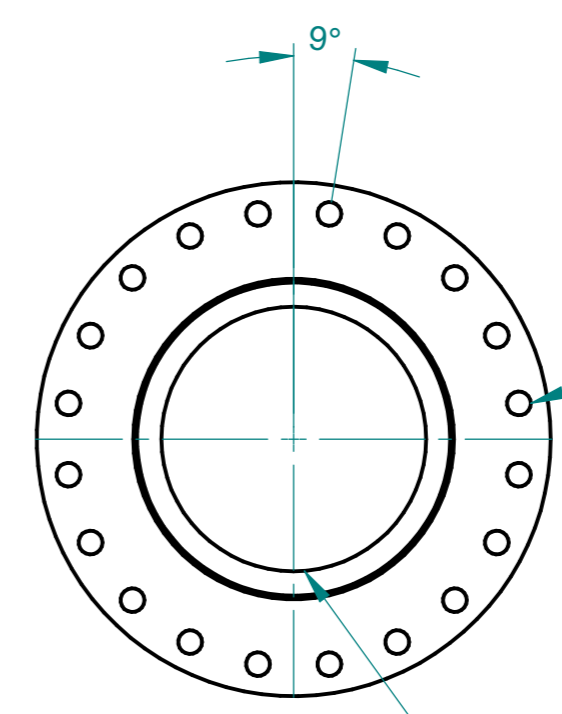
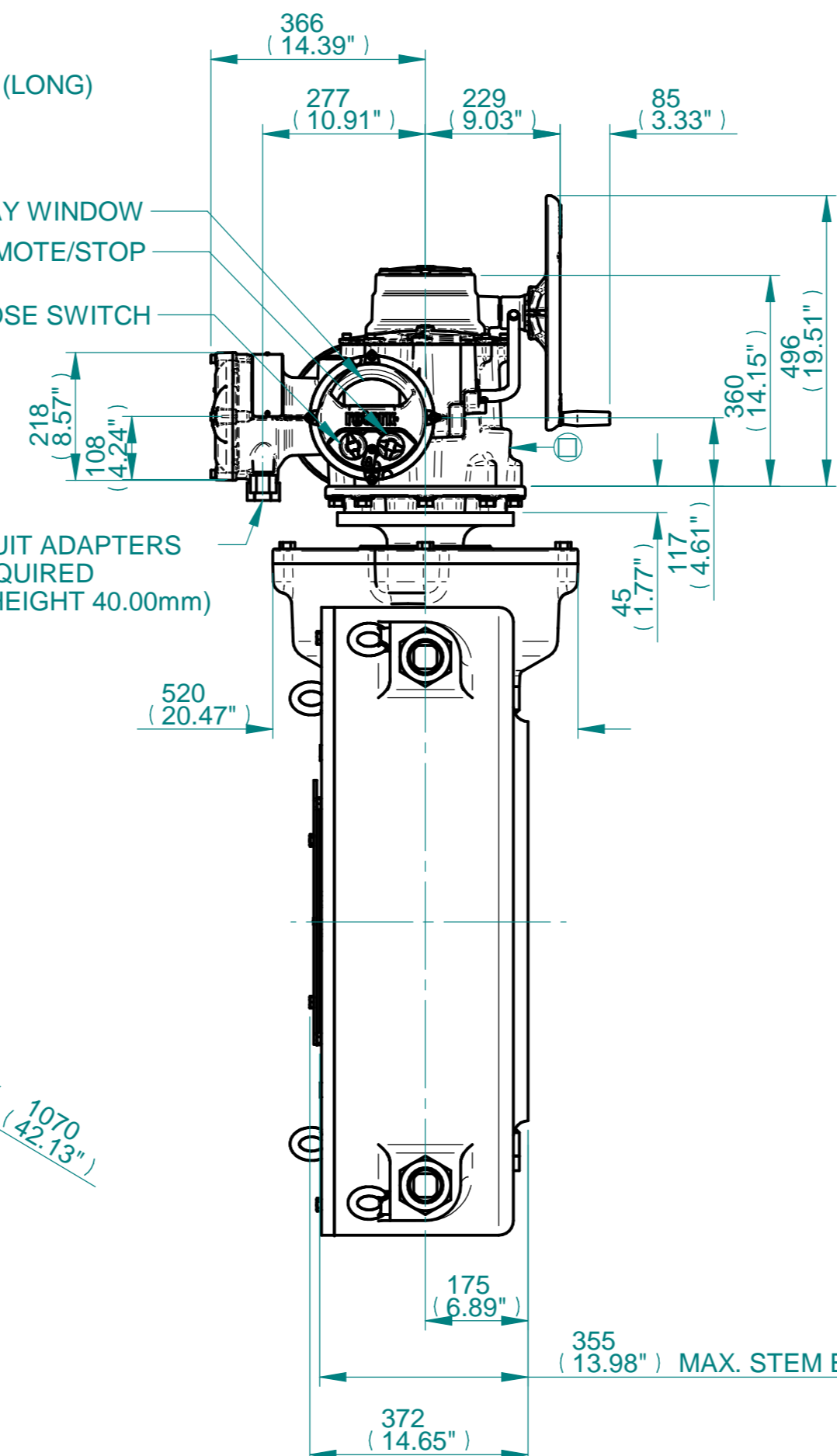
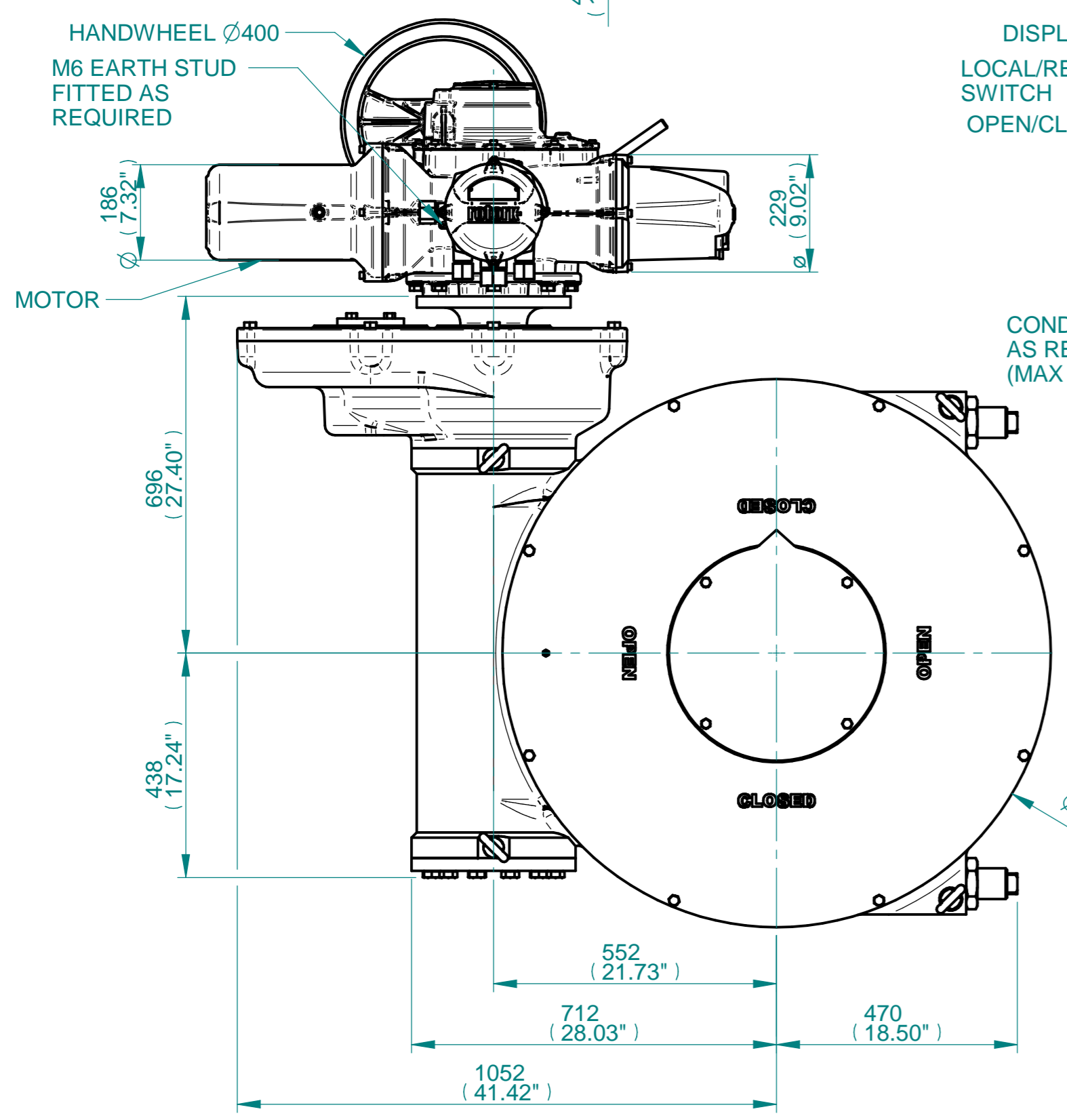
ISOMETRIC VIEW (SCALE 1:20)

NOTES:
 : DIMENSIONS WITH "*" INDICATE COVER REMOVAL ALLOWANCE
 : NETT WEIGHT = 2783kg/6123lbs
 : = OIL FILLER/DRAIN PLUG
 : THE INTERFACE PROVIDED FOR MOUNTING THE ACTUATOR OR SECOND STAGE GEARBOX ONTO THE VALVE SHOULD CONFORM TO GOOD ENGINEERING PRACTICES, ENSURING ADEQUATELY TOLERANCED LIMITS FOR PARALLELISM, PERPENDICULARITY AND CONCENTRICITY.
 : ROTORK CANNOT BE HELD LIABLE FOR DAMAGE TO OUR EQUIPMENT CAUSED BY EXCESSIVE LOADING FROM COVER TUBES. (SEE ALSO PUB000-124)

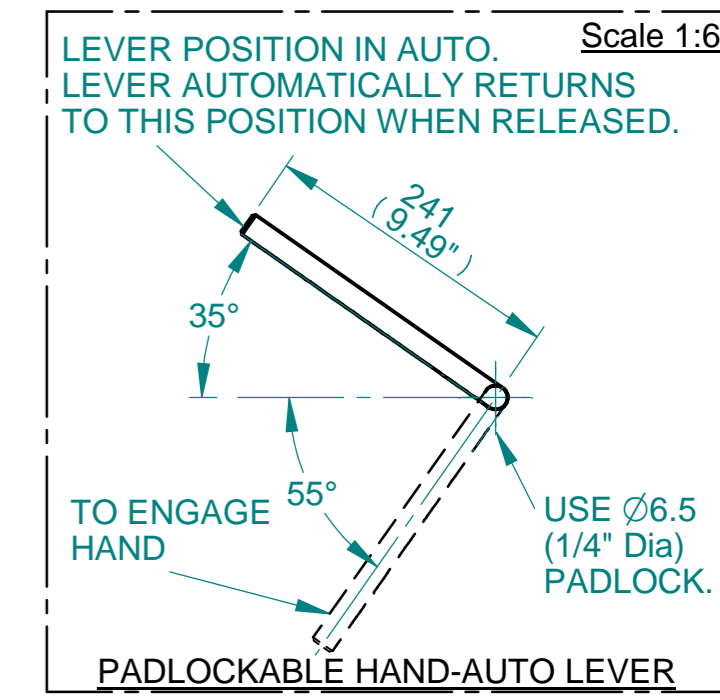
CONDUIT ENTRIES



	Hole 1	Hole 2	Hole 3	Hole 4
Size	As Required	As Required	As Required	As Required
Plugged	As Required	As Required	As Required	As Required
Gland	As Required	As Required	As Required	As Required



SEE MAXIMUM BORE & KEY TABLE



SEE GEARBOX OUTPUT FLANGE OPTIONS TABLE

3D Models are available in various formats under the same drawing number

rotork
 www.rotork.com
 Rotork Controls Limited
 Bath, BA1 3JQ, England.
 Telephone 01225-733200

Actuator Size: IQ70/90/95 IW15R1 - R3		Gearbox output flange options						Maximum Bore & Key			
Title	IQ70/90/95, SIDE HANDWHEEL, IW15R1 / IW15R2 / IW15R3, F/FA48 & 60, Ratios 272 - 5440:1 Installation Details	Designation	F48	F60			FA48	FA60	Key form	Ø Bore	Key size
Drawn	DJW	No. Holes	12	20			12	20	Rectangle (BS4235)	350	
Checked	NJC	Hole size	M36	M36			1-1/4" UNC	1-1/4" UNC	Rectangle (ANSI B17.1)	13.78"	
Date	16-NOV-22	PCD	483	603			19"	23.75"	Square (ANSI B17.1)		
Ref	SALES										
Project Ref	QUOTATION										

Issue	Description
1	First Issue

Scale: 1:10

THIRD ANGLE PROJECTION

Drawing Number	Issue No	Sheet No
I15SHWIW15STD	1	1 of 1

1 2 3 4 5 6 7 8 9 10 11 12