

rotork[®]
MIDLAND

Water Hydraulic Valves for hydro-electric power plants



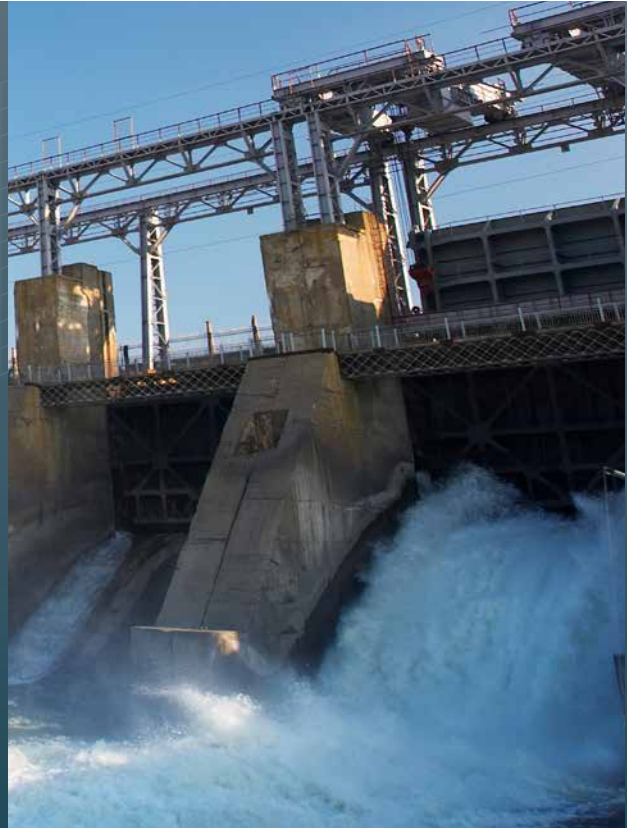
MIDLAND-ACS
A rotork Midland Brand

Product Overview

Redefining Flow Control

Contents

Section	Page
Introduction	3
Water Hydraulic Valves	4
Hydraulic Pilot Operated	6
Solenoid Operated with Hydraulic Override Pilot	6
Plunger Operated	6
DN15, DN25, DN40 - Hydraulic Pilot Operated for MIV Control	7



Rotork is the global market leader in valve automation and flow control. Our products and services are helping organisations around the world to improve efficiency, assure safety and protect the environment.

We strive always for technical excellence, innovation and the highest quality standards in everything we do. As a result, our people and products remain at the forefront of flow control technology.

Uncompromising reliability is a feature of our entire product range, from our flagship electric actuator range through to our pneumatic, hydraulic and electro-hydraulic actuators, as well as instruments, gearboxes and valve accessories.

Rotork is committed to providing first class support to each client throughout the whole life of their plant, from initial site surveys to installation, maintenance, audits and repair. From our network of national and international offices, our engineers work around the clock to maintain our position of trust.

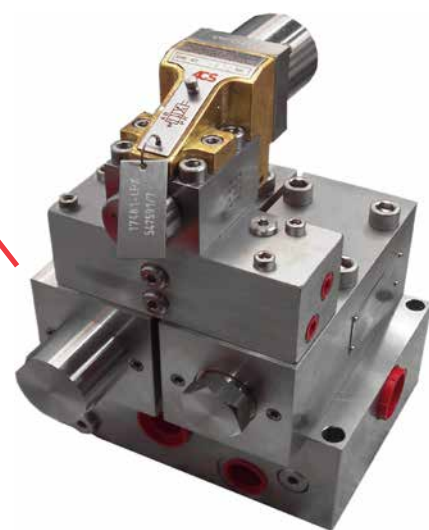
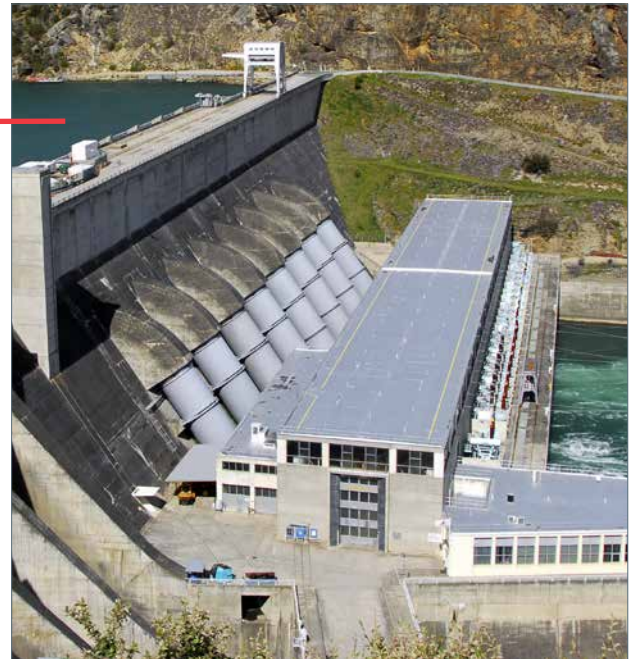
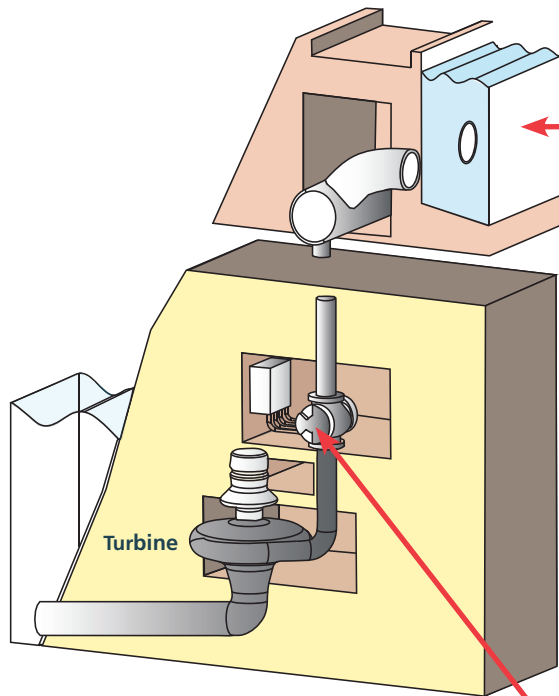
Rotork. Redefining flow control.

Introduction

As a specialist manufacturer of water hydraulic control valve equipment we offer comprehensive, purpose designed, engineered and manufactured solutions for the control of Main Inlet Valves (MIV).

Introducing our range of water hydraulic valves:

- For control of Main Inlet Valve
- Servo actuator, MIV service & maintenance seals
- Pressures up to 210 bar
- Flow rates up to 700 litres/min
- 316 stainless steel construction



Water Hydraulic Solenoid Valves – 316 stainless steel construction

The DN06 water hydraulic valve is a ball seated type hydraulic control valve. The stainless steel seat and ceramic ball design ensures a leak tight shut off.

Features and Benefits

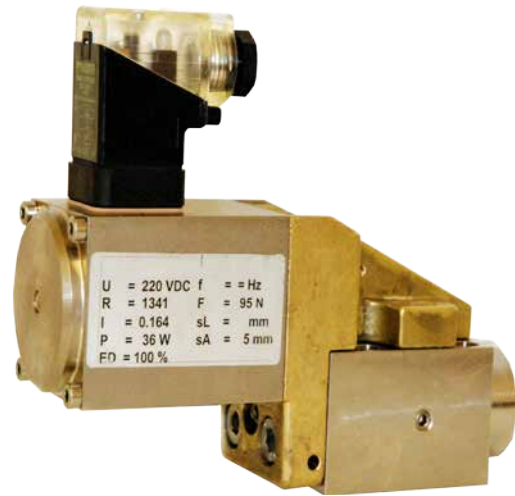
- Specifically designed for fresh water applications
- Easy installation, repair and replacement
- 316 stainless steel construction

General Description

The valve design incorporates a balanced internal piloting system and a lever mechanism to enable low powered operators to switch the valve over a wide range of pressures.

All valves have an o-ring interface that enables them to be fitted with British Standard Pipe Parallel thread (BSPP) ported subplates as standard, or manifold mounted to reduce pipework, fittings, weight and space. This interface also allows direct mounting of the valve to larger pilot operated valves up to the DN40, increasing the flow capacity to 700 l/min.

By removing just 4 bolts the valves can be dismantled without disturbing pipework and possibly contaminating the hydraulic system. Blanking or flushing plates can also be supplied.



Construction Materials

- Valve bodies and subplates: 316L stainless steel
- Wetted parts: various grades of stainless steel / ceramic / aluminium bronze / super duplex stainless steel
- Fasteners: A4, grade 80 stainless steel
- Springs: stainless steel

Ambient Temperature Range

- Standard: -20 to +60 °C (-4 to +140 °F)

Ingress Protection

- IP66/NEMA 4X

Operating Pressure Range

- 15 to 210 bar

Operating Medium

- Fluids - filtered fresh water

Filtration

- Recommended 10 micron absolute

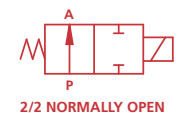
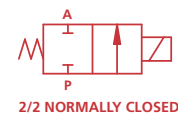
- 3 port, 2 way / 2 port, 2 way normally open & normally closed
- Flow rate of 15 l/min
- Weight - 3.0 kg

Voltage

- 24 VDC, 110 VDC, 220 VDC, 240 VDC

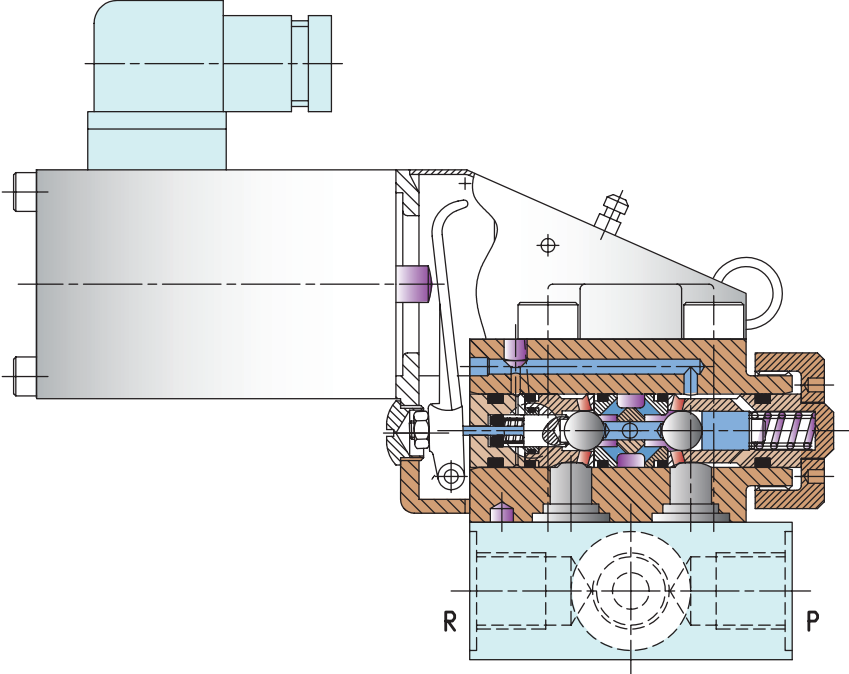
Manual Override

- Latchable

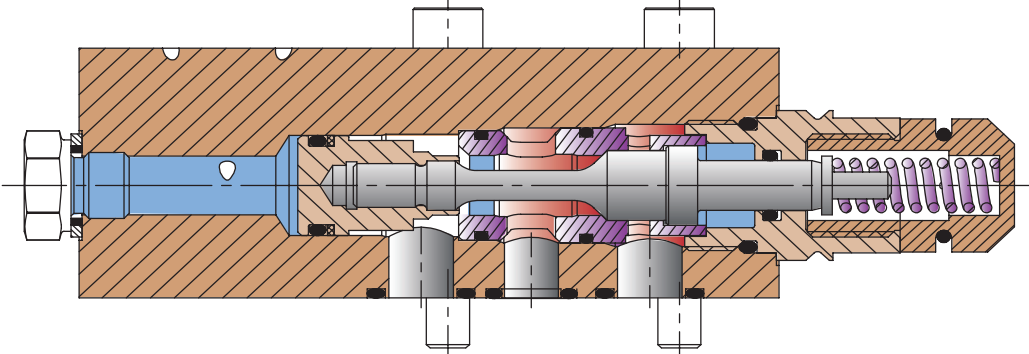


Water Hydraulic Valves – 316 stainless steel construction

DN6 Series
Ball seated design



DN15 & DN25 Series
Metal/metal cartridge design

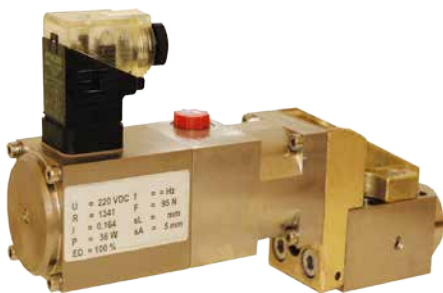
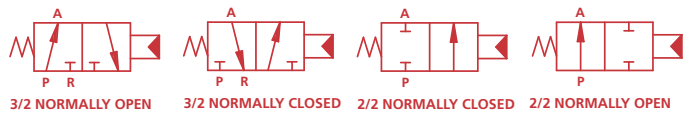


Water Hydraulic Valves – 316 stainless steel construction



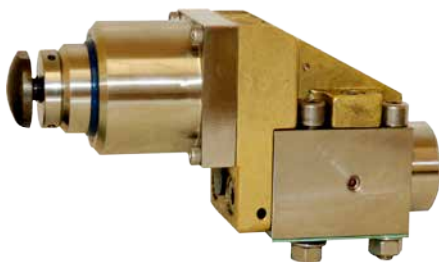
Hydraulic Pilot Operated

- 3 port, 2 position normally open/normally closed
- 2 port, 2 position normally open/normally closed
- 210 bar max. working pressure / 15 bar minimum
- Flow rate of 15 l/min
- 316 stainless steel construction
- Weight - 3.0 kg



Solenoid Operated with Hydraulic Override Pilot

- 3 port, 2 way and 4 port, 2 way
- 210 bar max. pressure / 15 bar minimum
- Flow rate of 15 l/min
- 316 stainless steel construction
- Nitrile/PTFE seals
- Ports "A", "B", "P" & "R" - 1/2" BSPP
- Pilot Port "X" - 1/4" BSPP
- 24 V DC, 110 V DC, 220 V DC, , 240 V DC

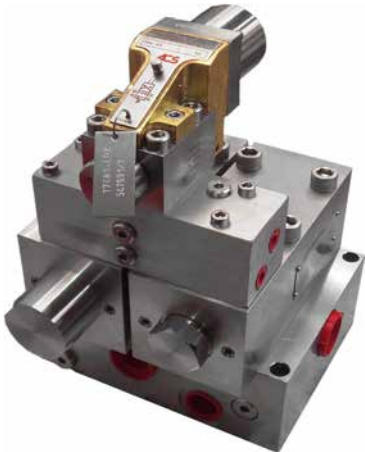


Plunger Operated

- 2 port, 2 position normally open/normally closed
- 3 port, 2 position normally open/normally closed
- 210 bar max. working pressure / 15 bar minimum
- Flow rate of 15 l/min
- 316 stainless steel construction
- Weight - 3.0 kg



Water Hydraulic Valves – 316 stainless steel construction



DN15, DN25, DN40 - Hydraulic Pilot Operated for MIV Control

- Pressure range 15 to 210 bar
- Flow rates up to 700 l/min
- 3/2, 4/2 and 5/2 functions
- 316 stainless steel construction
- Water or Oil pilots
- Ports:
DN15 = 3/4" BSPP
DN25 = 1" BSPP
DN40 = 1 1/2" BSPP or SAE 3,000psi flanges



rotork®

Redefining Flow Control

www.rotork.com

A full listing of our worldwide sales and service network is available on our website.

Rotork Midland Ltd.
Patrick Gregory Road
Wolverhampton
WV11 3DZ, UK
tel +44 (0)1902 305 678
fax +44 (0)1902 305 676
email sales.midland@rotork.com

Scan with your smart phone
for more information on
this product range



PUB117-008-00
Issue 11/14

As part of a process of on-going product development, Rotork reserves the right to amend and change specifications without prior notice. Published data may be subject to change. For the very latest version release, visit our website at www.rotork.com
The name Rotork is a registered trademark. Rotork recognises all registered trademarks. POWSH1114.
Published and produced in the UK by Rotork Controls Limited. Registered office: Rotork plc, Brassmill Lane, Bath, BA1 3JQ, UK.