

# rotork®

## MIDLAND

HACM's can be designed to control all types of hydraulic linear or semi-rotary valve actuators. Constructed from 316 stainless steel they use modular control component technology to eliminate costly piping, fittings and potential leaks.

The compact design of the manifolds also reduce weight and required space for local control panels. With views to maximise compatibility, the manifold can be designed to interface with a variety of solenoid valve manufacturers. Designed to suit customer or project specification, a Solidworks format enables customers to integrate with actuator design, eliminating costly engineering time. Just send your specification / circuit diagram to us and our engineering department will create a solution for you.

### Features and Benefits

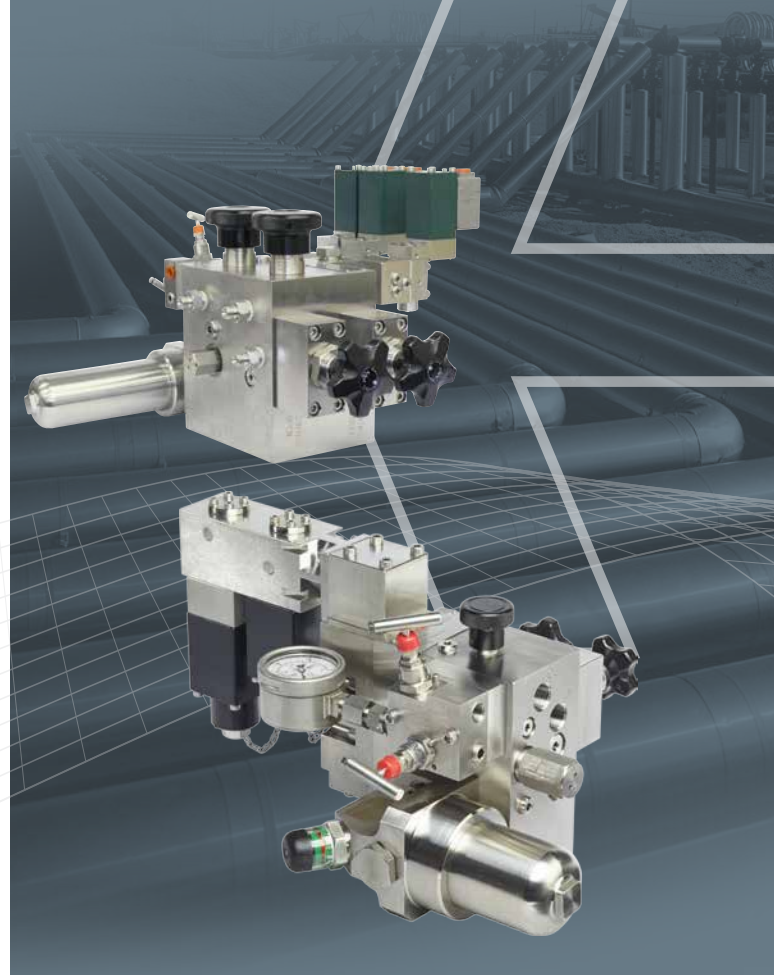
- On / Off, PSD / ESD and partial stroking control circuits
- Thermal relief valve for actuator protection
- Supply inlet isolation valve
- Return line check valve
- Pressure filter with visual pop up condition indicator and bypass valve
- BSP.P or NPT female port connections
- M20 x 1.5 or ½" NPT female cable gland entry connections
- Low pressure air or gas pilot operator options
- Inlet supply pressure gauge with block and bleed valve
- 3 port, 2 position, 4 port, 2 position and 4 port, 3 position circuits available
- Uni-directional adjustable flow control valves for actuator opening and closing speed control
- Reduced downtime as components are easy to change out/replace - uses cartridge technology

### Ambient temperature range

- Standard: -20 to +60 °C

### Max operating pressure

- 345 bar



## HACM

### Hydraulic Actuator Control Manifold

Control of all types of Hydraulic Linear or Semi-Rotary Valve Actuators

### Fluid Media

- Compatible with a wide range of hydraulic fluids

### Certifications

- Ex d, Ex emb, Ex i low powered solenoid valves for Zone 1, Class 1 hazardous areas

### Flow Rates

- Up to 200 l/min (45 gpm)

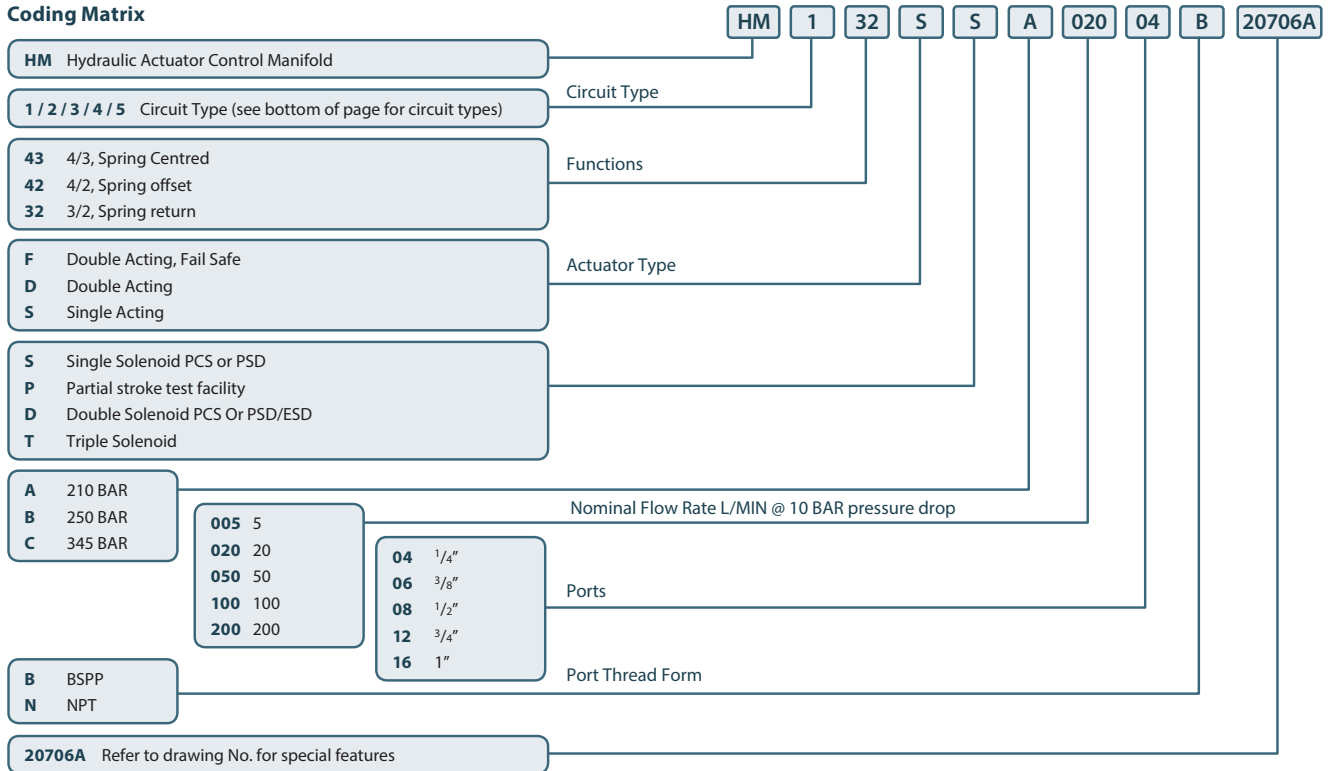
### Ingress protection

- IP66/NEMA 4X
- Flushed to NAS 1638 Class 6 /ISO 4406 17/15/12

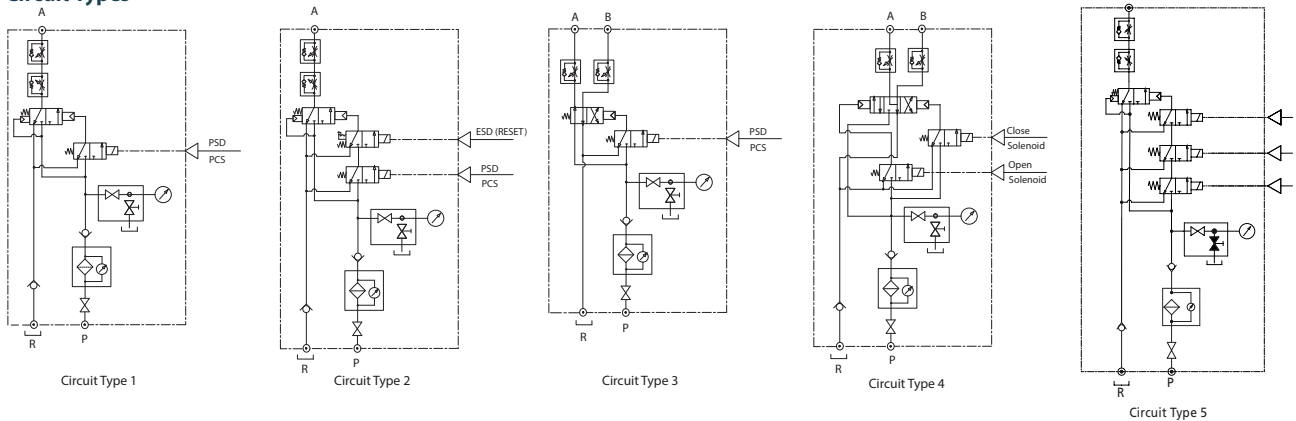
**MIDLAND-ACS**

Keeping the World Flowing

### Coding Matrix



### Circuit Types



A full listing of the Rotork sales and service network is available on our website.

[www.rotork.com](http://www.rotork.com)

Rotork Midland Ltd.  
 Patrick Gregory Road  
 Wolverhampton  
 WV11 3DZ  
 UK

tel +44 (0)1902 305 678  
 fax +44 (0)1902 305 676  
 email [sales.midland@rotork.com](mailto:sales.midland@rotork.com)

### Controls

Electric Actuators and Control Systems

### Fluid Systems

Fluid Power Actuators and Control Systems

### Gears

Gearboxes and Gear Operators

### Instruments

Precision Control and Indication

### Site Services

Projects, Services and Retrofit