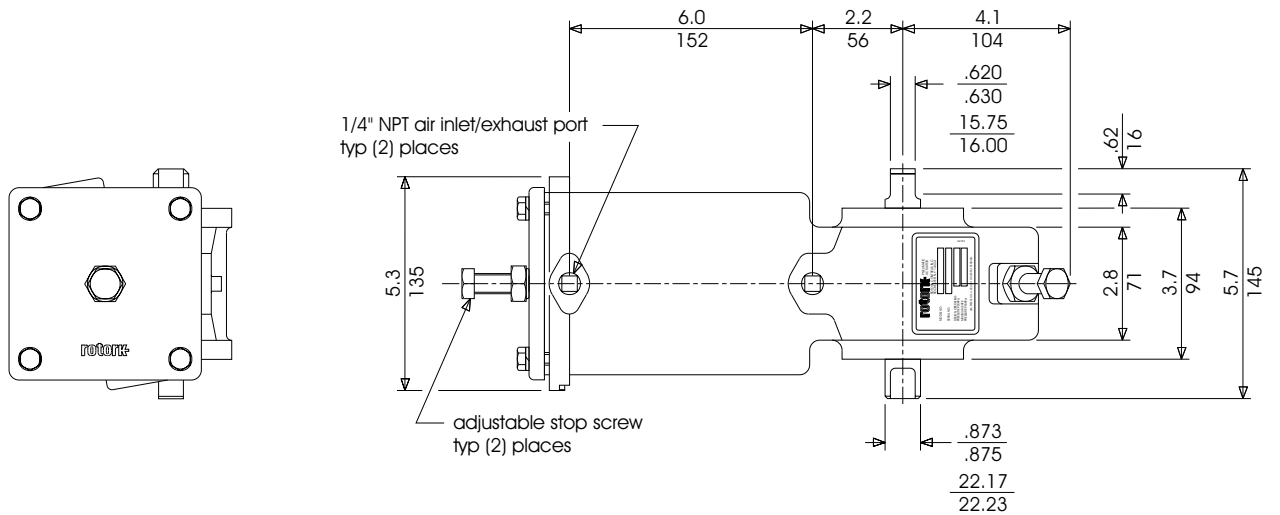
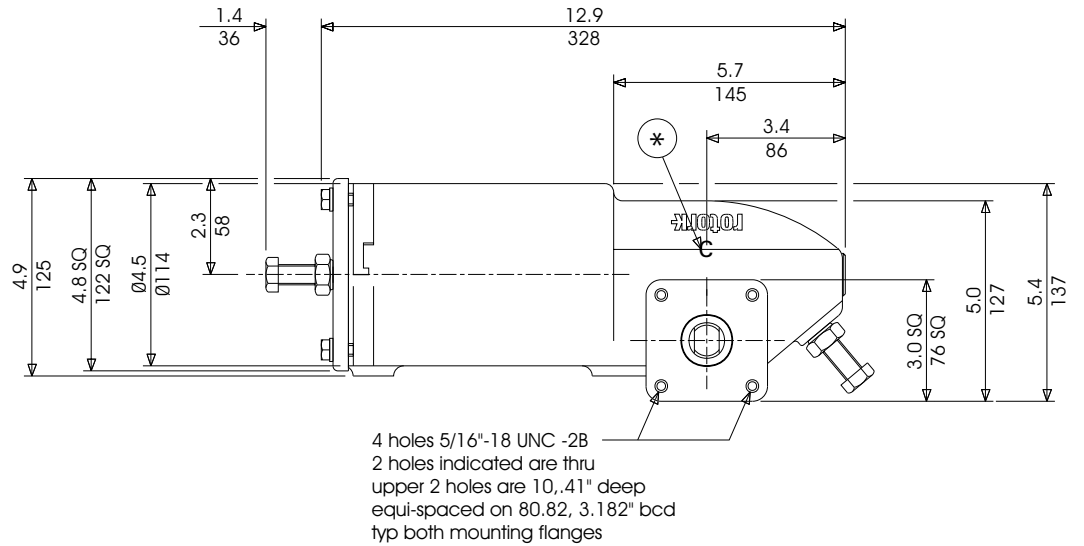


Dimension Data
SP Range Pneumatic Actuator
40 double acting



DOC1250-01

- * For failsafe closed operation, position 'C' cast indicator opposite valve.
- * For failsafe open operation, position 'O' cast indicator opposite valve.

Weight
lbs/kg

20.5/9.3

Swept Volume
U.S. gallons/liters

0.177/0.669