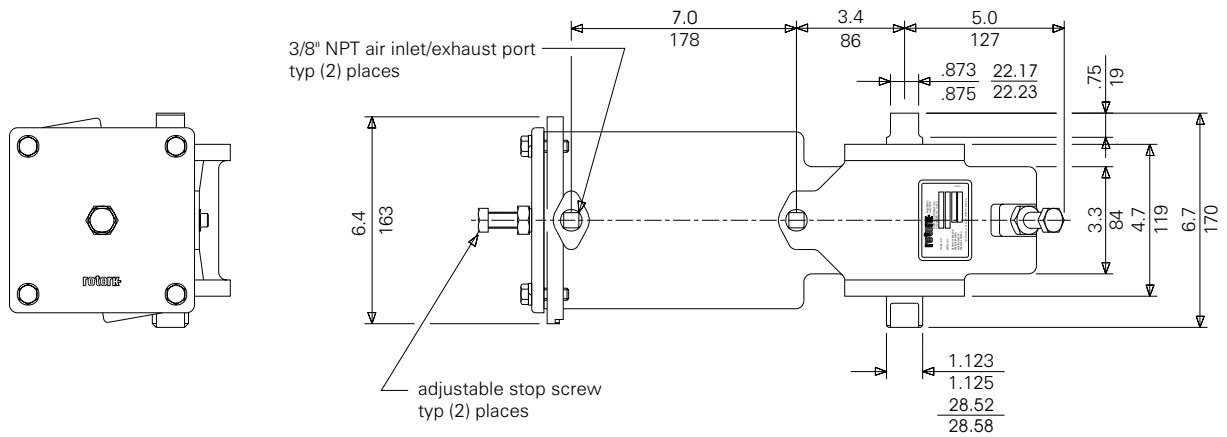
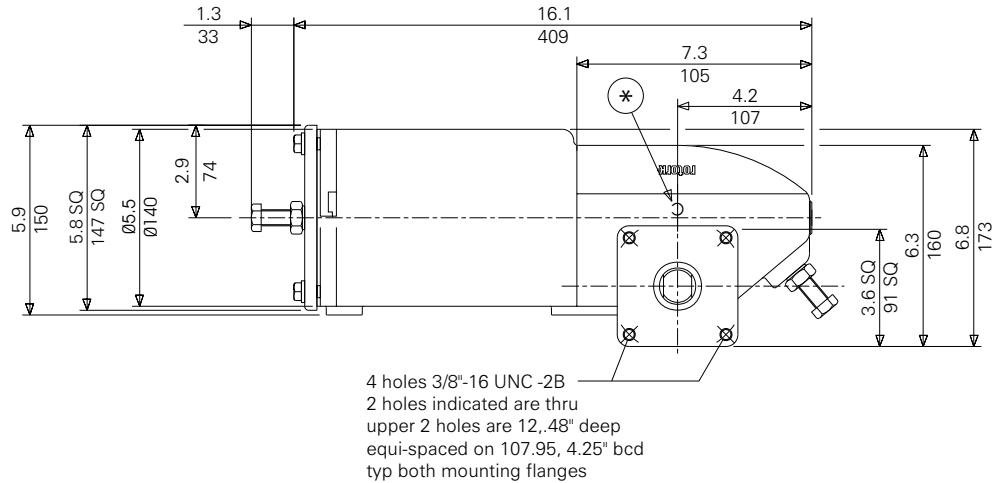


Dimension data
SP Range pneumatic actuator
50 double acting



DOC1252-01

- * For failsafe closed operation, position 'C' cast indicator opposite valve.
- * For failsafe open operation, position 'O' cast indicator opposite valve.

Weight
lbs/kg

33.5/15.2

Swept Volume
U.S. gallons/liters

0.361/1.367