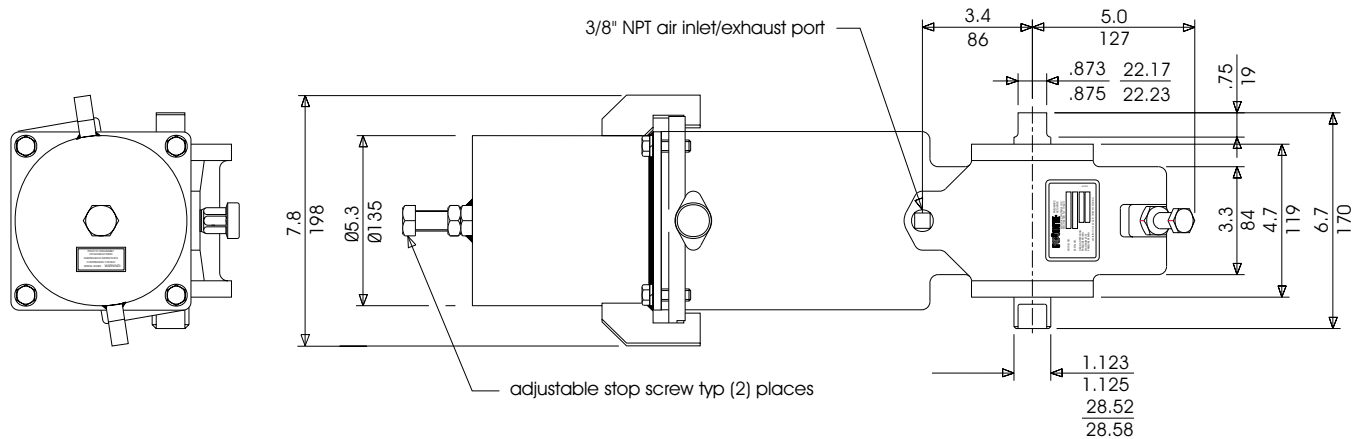
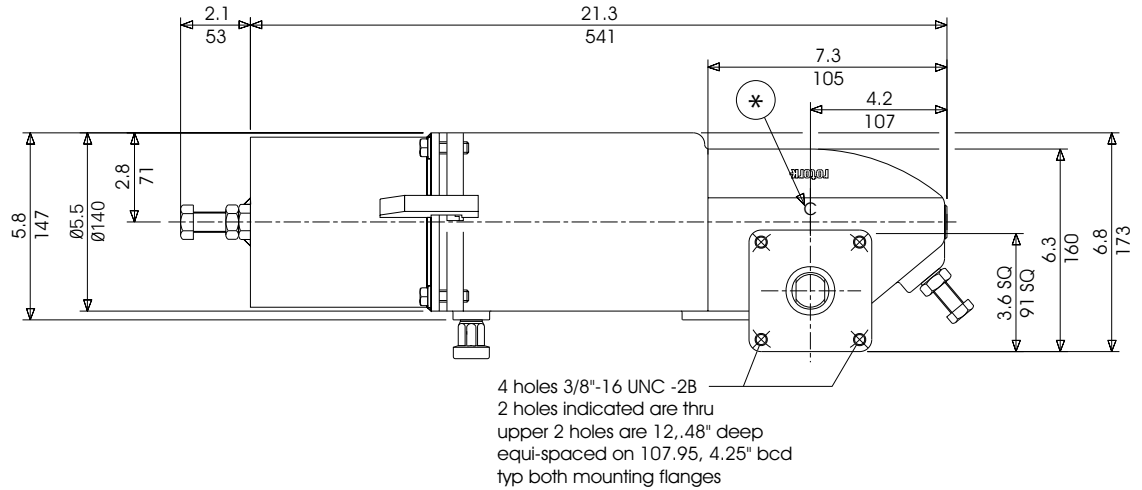


Dimension data
SP Range pneumatic actuator
50 spring return



DOC1253-01

* For failsafe closed operation, position 'C' cast indicator opposite valve.

* For failsafe open operation, position 'O' cast indicator opposite valve.

Weight
lbs/kg

50.0/22.68

Swept Volume
U.S. gallons/liters

0.361/1.367