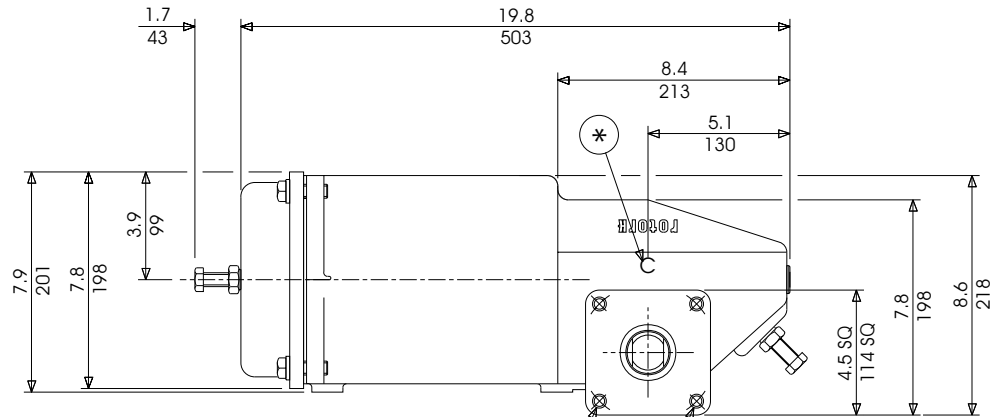
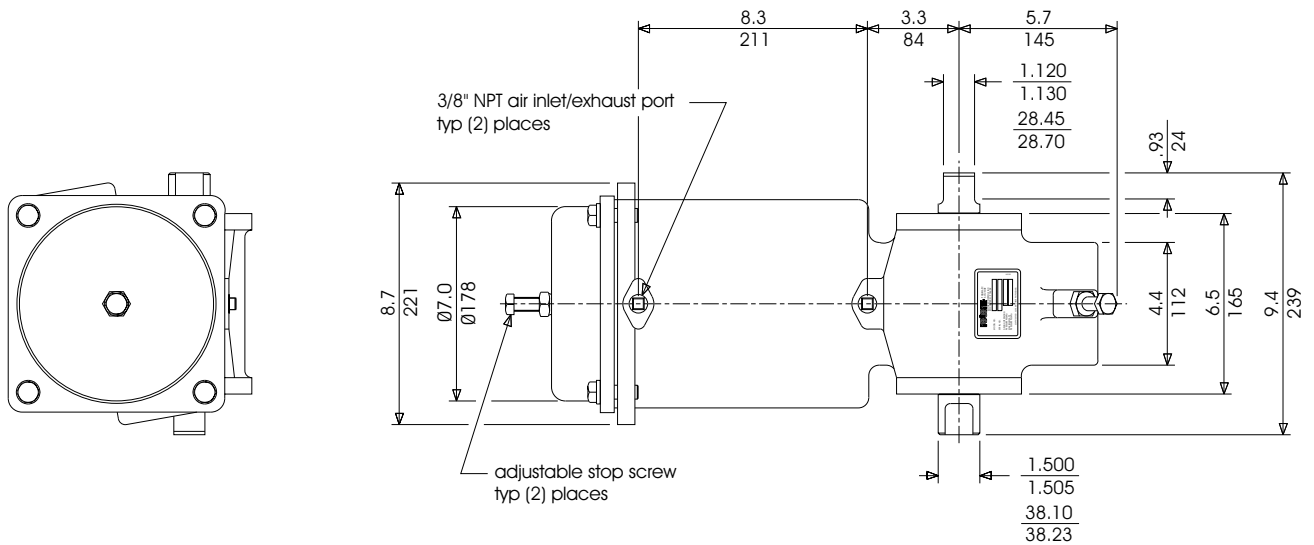


## Dimension data SP Range pneumatic actuator 70 double acting



4 holes 1/2"-13 UNC -2B2  
holes indicated are thru  
upper 2 holes are 16.62" deep  
equi-spaced on 125.73, 4.950" bcd  
typ both mounting flanges



DOC1254-01

\* For failsafe closed operation, position 'C' cast indicator opposite valve.

\* For failsafe open operation, position 'O' cast indicator opposite valve.

**Weight**  
lbs/kg

65/29.5

**Swept Volume**  
U.S. gallons/liters

.875/3.311