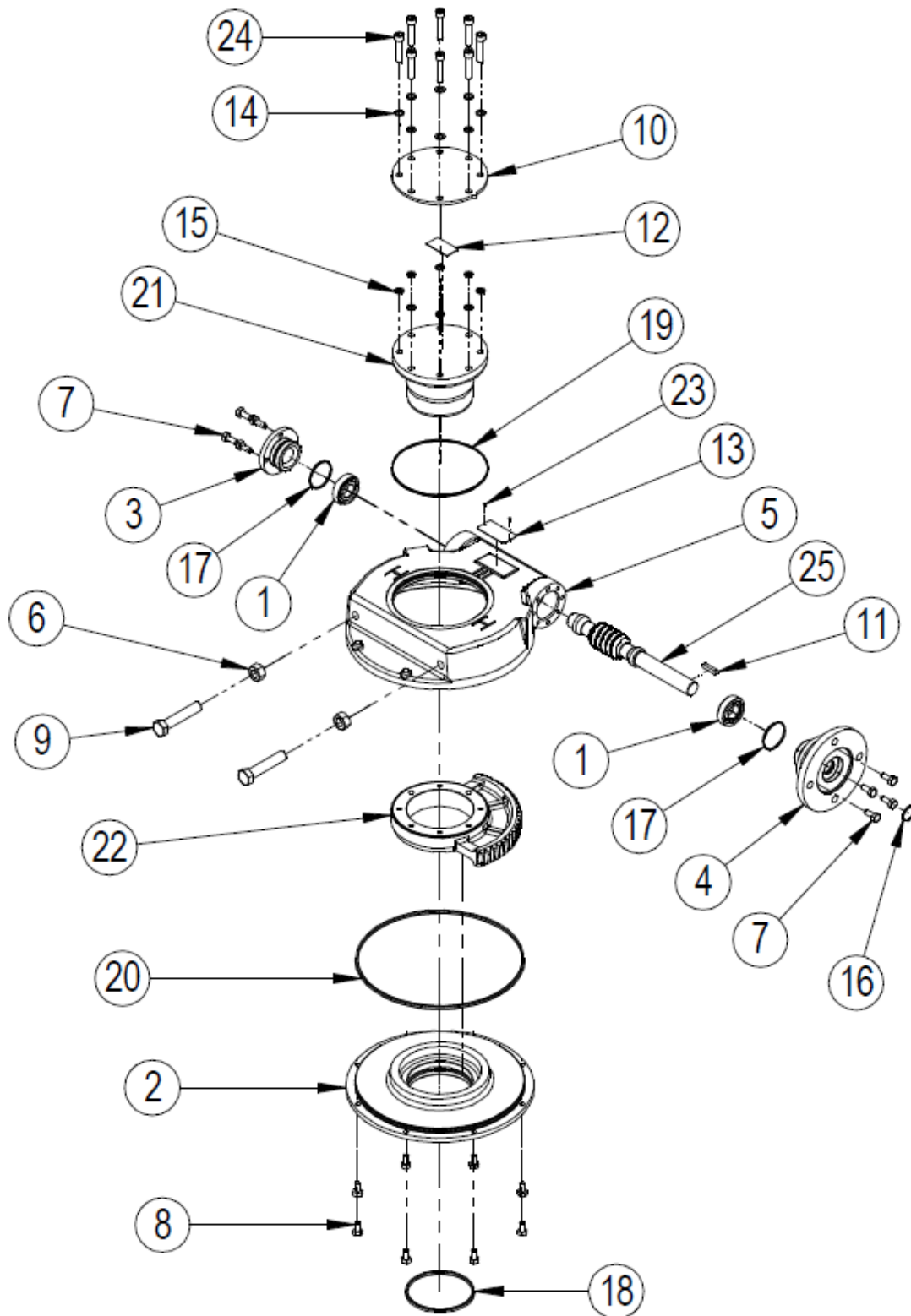


**SPARE PARTS LIST FOR IW/MOW 4-8 RANGE OF WORM GEAR
ACTUATORS**



EXPLODED VIEW FOR IW/MOW 4 - 8 GEARBOX OPERATIONS

ITEM	DESCRIPTION	QUANTITY
*1	ANGULAR CONTACT BALL BEARING	2
2	BASEPLATE	1
3	ENDCAP	1
4	INPUT FLANGE	1
5	GEARCASE	1
6	HEXAGON NUT	2
7	SCREW	8
8	SCREW	8
9	SCREW	2
10	INDICATOR PLATE	1
11	KEY	1
12	LABEL	1
13	NAMEPLATE	1
14	WASHER	8
*15	O RING	8
*16	O RING	1
*17	O RING	2
*18	O RING	1
*19	O RING	1
*20	O RING	1
21	OUTPUT SLEEVE	1
22	QUADRANT	1
23	RIVET (FOR STAINLESS NAMPLATES)	2
24	SCREW	8
25	WORMSHAFT	1
26	GREASE	
27	SHIMS	(MOW)

Note: Items marked * are the recommended spares holding for 5 years operation

Special solid worm wheels do not have output sleeves and screws but do have the same gearbox rating