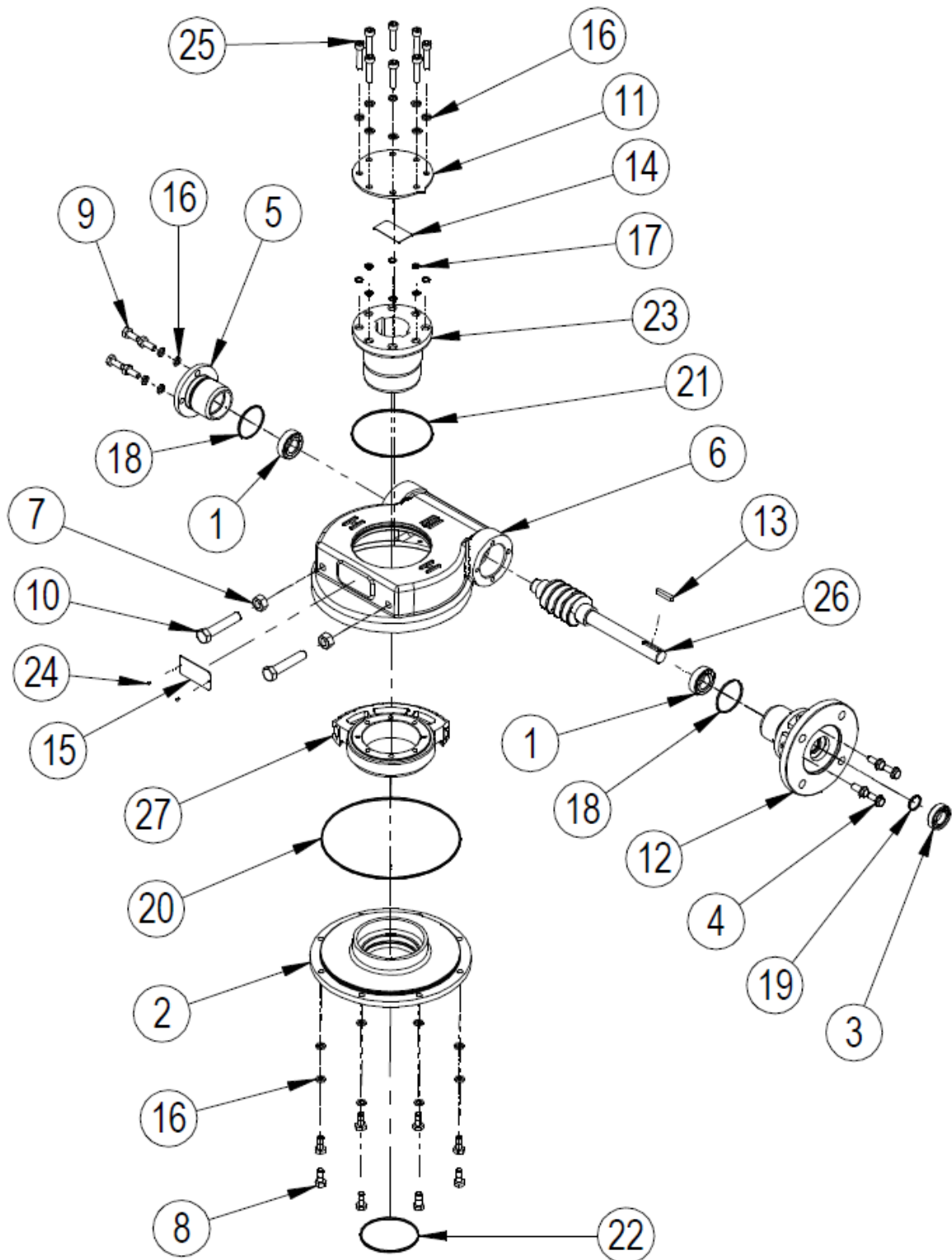


SPARE PARTS LIST FOR IW52, IW62 AND IW63 RANGE OF WORM GEAR ACTUATORS



EXPLODED VIEW FOR IW52, IW62 AND IW63 GEARBOX OPERATIONS

ITEM	DESCRIPTION	QUANTITY
*1	ANGULAR CONTACT BALL BEARING	2
2	BASEPLATE	1
*3	BEARING	1 (Units with IR)
4	SCREW	4
5	ENDCAP	1
6	GEARCASE	1
7	HEXAGON NUT	2
8	SCREW	8
9	SCREW	4
10	SCREW	2
11	INDICATOR PLATE	1
12	INPUT FLANGE	1
13	KEY	1
14	LABEL	1
15	NAMEPLATE	1
16	WASHER	20
*17	O RING	8
*18	O RING	2
*19	O RING	1
*20	O RING	1
*21	O RING	1
*22	O RING	1
23	OUTPUT SLEEVE	1
24	RIVET (STAINLESS NAMPLATE ONLY)	2
25	SCREW	8
26	WORM SHAFT	1
27	WORMWHEEL	1
28	GREASE	

Note: Items marked * are the recommended spares holding for 5 years operation

Special solid worm wheels do not have output sleeves and screws but do have the same gearbox rating